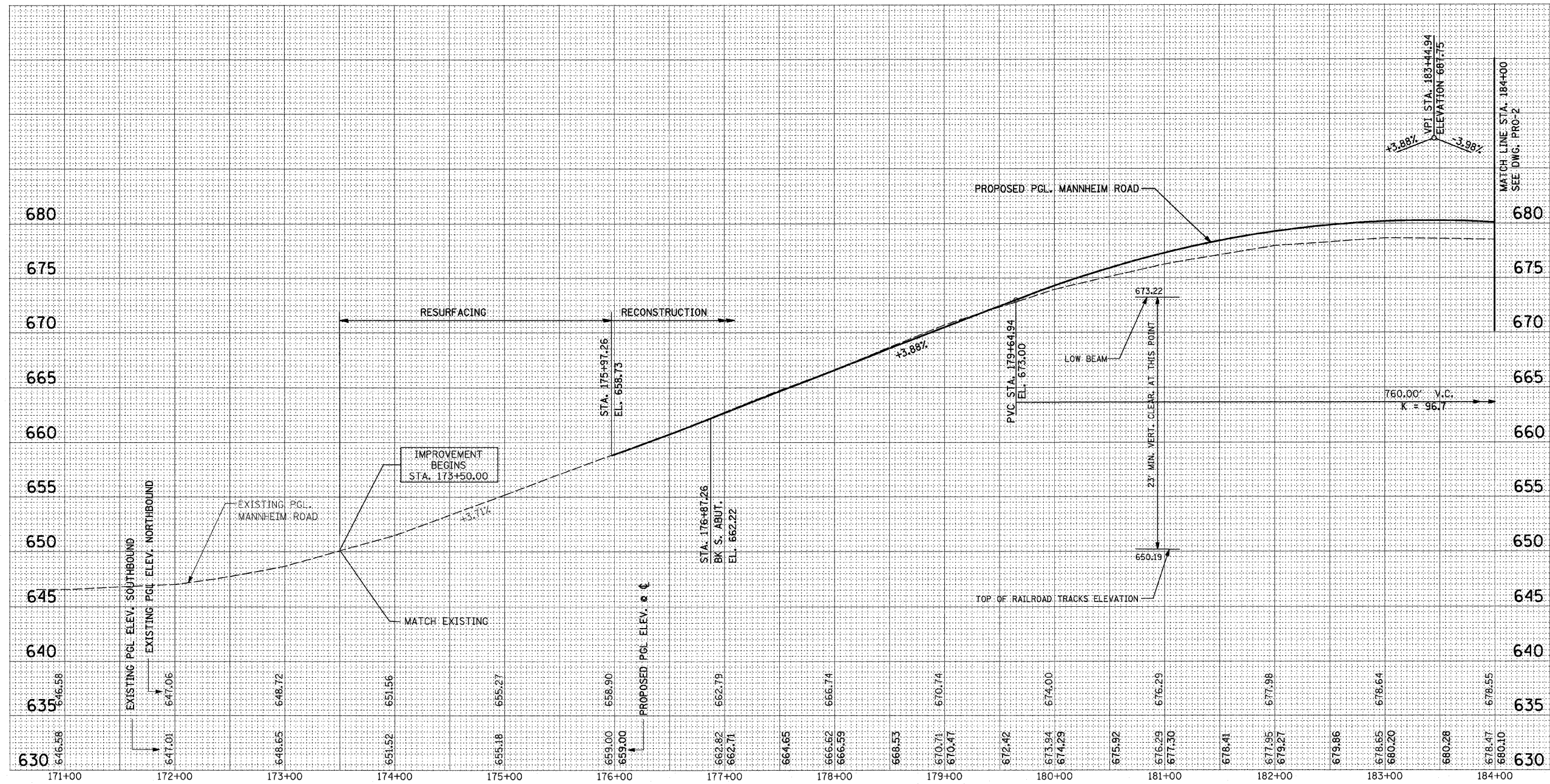


F.A.P. RTE.	SECTION	COUNTY	TOTAL SHEETS	SHEET NO.
330	465 VB-R-1	COOK	103	21
STA.	TO STA.		175+51.76.	
FED. ROAD DIST. NO. 1		ILLINOIS	FED. AID PROJECT	
CONTRACT NO. 60407				



NOTES

- EXISTING PGL PROFILE IS AT EDGE OF MEDIAN (SEE TYPICAL SECTIONS).
- PROPOSED PGL IS AT EXTRAPOLATED CROSS SLOPE TO MANNHEIM RD. ϕ (SEE TYPICAL SECTION)

REVISIONS	
NAME	DATE

ILLINOIS DEPARTMENT OF TRANSPORTATION
 FAP 330 US 12/45 (MANNHEIM RD.) OVER
 500 LINE RR & FRANKLIN AVE.
ROADWAY PROFILE
 STA. 173+50 TO STA. 184+00
 HOR: 1" = 50'
 SCALE: VERT: 1" = 5'
 DATE: JULY 8, 2009
 DRAWN BY: CJO
 CHECKED BY: PWK

EARTH TECH | AECOM

PRO-1