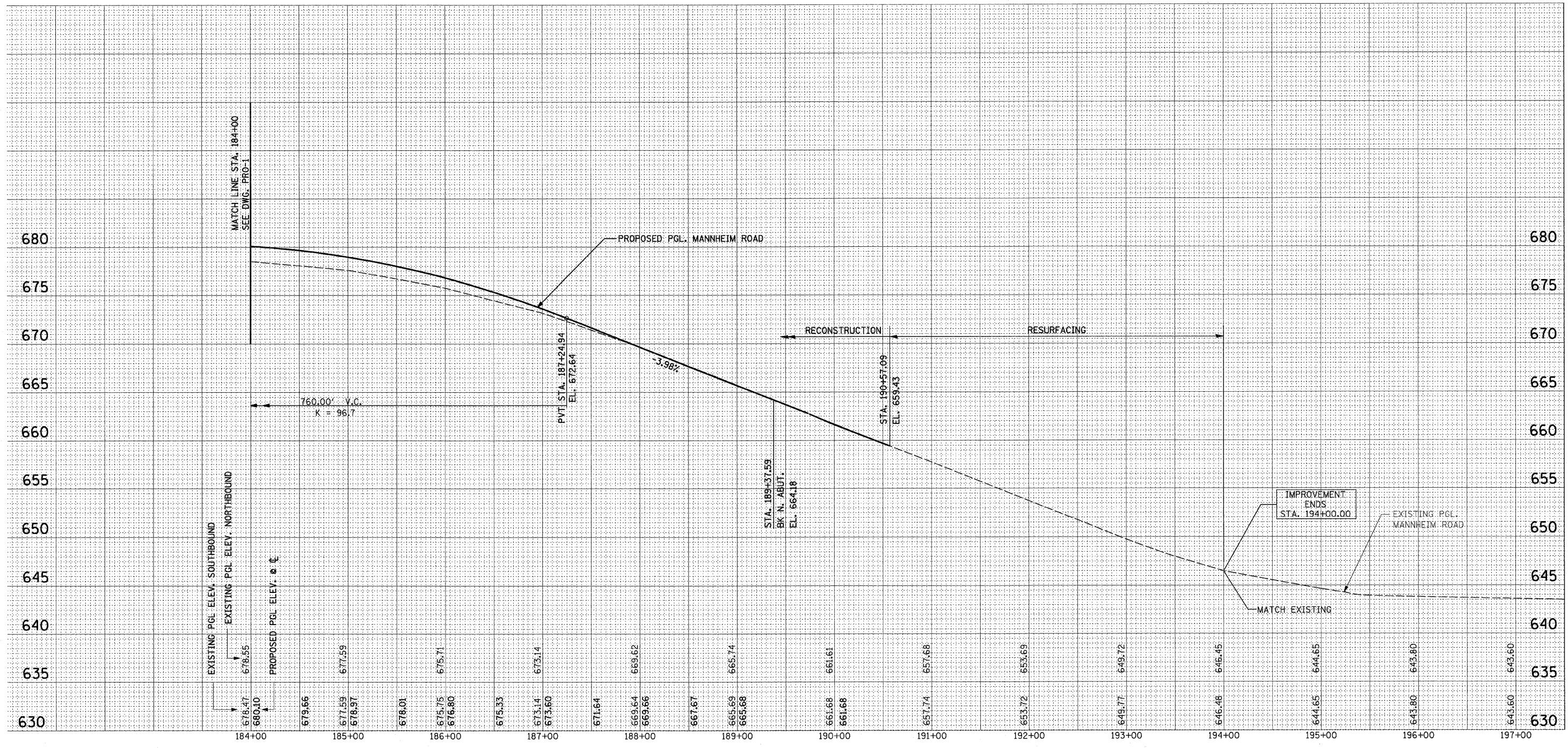


F.A.P. RTE.	SECTION	COUNTY	TOTAL SHEETS	SHEET NO.
330	465 VB-R-1	COOK	103	22
STA. 184+00		TO STA. 189+73.09		
FED. ROAD DIST. NO. 1		ILLINOIS FED. AID PROJECT		
CONTRACT NO. 60407				



NOTES

- EXISTING PGL PROFILE IS AT EDGE OF MEDIAN (SEE TYPICAL SECTIONS).
- PROPOSED PGL IS AT EXTRAPOLATED CROSS SLOPE TO MANNHEIM RD. ϕ (SEE TYPICAL SECTION).

REVISIONS	
NAME	DATE

ILLINOIS DEPARTMENT OF TRANSPORTATION
 FAP 330 US 12/45 (MANNHEIM RD.) OVER
 S00 LINE RR & FRANKLIN AVE.
 ROADWAY PROFILE
 STA. 184+00 TO STA. 194+00

HOR: 1" = 50'
 SCALE: VERT: 1" = 5'
 DATE: JULY 8, 2009

DRAWN BY: CJO
 CHECKED BY: PWK



L:\WORK\63346\cadd\drawings\Roadway\22prof.dgn
 7/8/2009