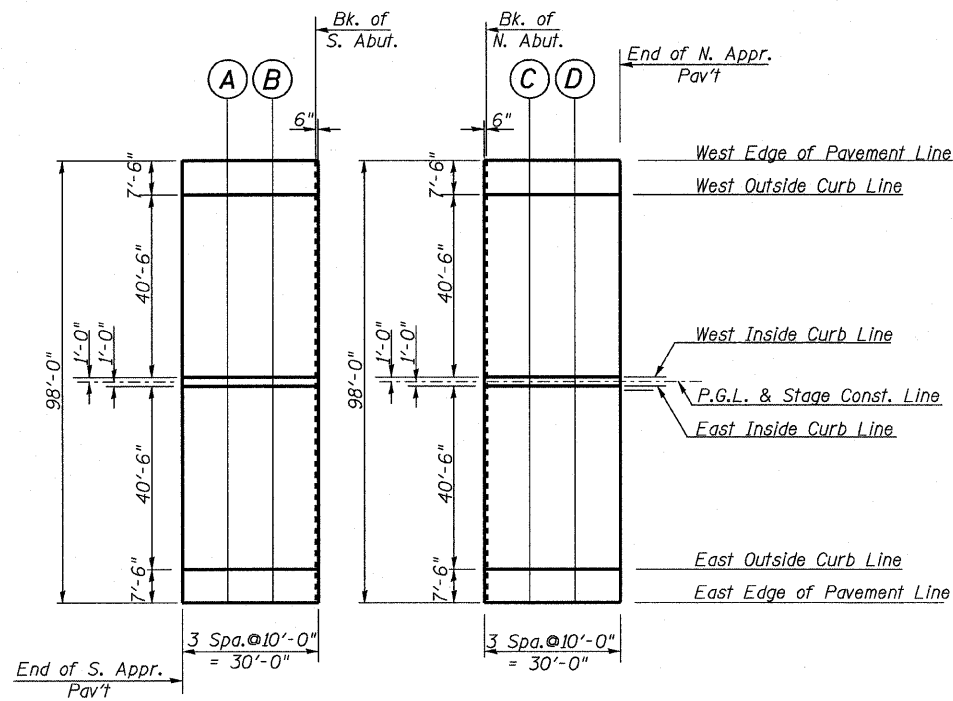




**SOUTH APPROACH PAV'T**



**PLAN (S. APPR. PAV'T)**

**PLAN (N. APPR. PAV'T)**

**West Edge of Pavement Line**

Location	Station	Offset	Theoretical Grade Elev.
End S. Appr. Slab	176+57.76	-49.00	660.10
A	176+67.76	-49.00	660.48
B	176+77.76	-49.00	660.87
Start S. Appr. Slab	176+87.76	-49.00	661.26

**West Outside Curb Line**

Location	Station	Offset	Theoretical Grade Elev.
End S. Appr. Slab	176+57.76	-41.50	660.25
A	176+67.76	-41.50	660.63
B	176+77.76	-41.50	661.02
Start S. Appr. Slab	176+87.76	-41.50	661.41

**West Inside Curb Line**

Location	Station	Offset	Theoretical Grade Elev.
End S. Appr. Slab	176+57.76	-1.00	661.06
A	176+67.76	-1.00	661.44
B	176+77.76	-1.00	661.83
Start S. Appr. Slab	176+87.76	-1.00	662.22

**P.G.L. & Stage Const. Line**

Location	Station	Offset	Theoretical Grade Elev.
End S. Appr. Slab	176+57.76	0.00	661.08
A	176+67.76	0.00	661.46
B	176+77.76	0.00	661.85
Start S. Appr. Slab	176+87.76	0.00	662.24

**East Inside Curb Line**

Location	Station	Offset	Theoretical Grade Elev.
End S. Appr. Slab	176+57.76	1.00	661.06
A	176+67.76	1.00	661.44
B	176+77.76	1.00	661.83
Start S. Appr. Slab	176+87.76	1.00	662.22

**East Outside Curb Line**

Location	Station	Offset	Theoretical Grade Elev.
End S. Appr. Slab	176+57.76	41.50	660.25
A	176+67.76	41.50	660.63
B	176+77.76	41.50	661.02
Start S. Appr. Slab	176+87.76	41.50	661.41

**East Edge of Pavement Line**

Location	Station	Offset	Theoretical Grade Elev.
End S. Appr. Slab	176+57.76	49.00	660.10
A	176+67.76	49.00	660.48
B	176+77.76	49.00	660.87
Start S. Appr. Slab	176+87.76	49.00	661.26

**NORTH APPROACH PAV'T**

**West Edge of Pavement Line**

Location	Station	Offset	Theoretical Grade Elev.
Start N. Appr. Slab	189+37.09	-49.00	663.22
C	189+47.09	-49.00	662.83
D	189+57.09	-49.00	662.43
End N. Appr. Slab	189+67.09	-49.00	662.03

**West Outside Curb Line**

Location	Station	Offset	Theoretical Grade Elev.
Start N. Appr. Slab	189+37.09	-41.50	663.37
C	189+47.09	-41.50	662.98
D	189+57.09	-41.50	662.58
End N. Appr. Slab	189+67.09	-41.50	662.18

**West Inside Curb Line**

Location	Station	Offset	Theoretical Grade Elev.
Start N. Appr. Slab	189+37.09	-1.00	664.18
C	189+47.09	-1.00	663.79
D	189+57.09	-1.00	663.39
End N. Appr. Slab	189+67.09	-1.00	662.99

**P.G.L. & Stage Const. Line**

Location	Station	Offset	Theoretical Grade Elev.
Start N. Appr. Slab	189+37.09	0.00	664.20
C	189+47.09	0.00	663.81
D	189+57.09	0.00	663.41
End N. Appr. Slab	189+67.09	0.00	663.01

**East Inside Curb Line**

Location	Station	Offset	Theoretical Grade Elev.
Start N. Appr. Slab	189+37.09	1.00	664.18
C	189+47.09	1.00	663.79
D	189+57.09	1.00	663.39
End N. Appr. Slab	189+67.09	1.00	662.99

**East Outside Curb Line**

Location	Station	Offset	Theoretical Grade Elev.
Start N. Appr. Slab	189+37.09	41.50	663.37
C	189+47.09	41.50	662.98
D	189+57.09	41.50	662.58
End N. Appr. Slab	189+67.09	41.50	662.18

**East Edge of Pavement Line**

Location	Station	Offset	Theoretical Grade Elev.
Start N. Appr. Slab	189+37.09	49.00	663.22
C	189+47.09	49.00	662.83
D	189+57.09	49.00	662.43
End N. Appr. Slab	189+67.09	49.00	662.03

REVISIONS		ILLINOIS DEPARTMENT OF TRANSPORTATION
NAME	DATE	
		<b>TOP OF SLAB ELEVATIONS</b> <b>NORTH &amp; SOUTH APPROACH</b> FAP 330 US 12/45 (MANNHEIM RD.) OVER 500 LINE RR & FRANKLIN AVE. STRUCTURE NO. 016-2815 SECTION 465 VB-R-1 STA. 183+33.30 DATE 7/2009

**EARTHTECH | AECOM**

COOK COUNTY  
 DRAWN BY JHR  
 CHECKED BY DEV