

F.A.P.	SECTION	COUNTY	TOTAL SHEETS	SHEET NO.
330	465 VB-R-1	COOK	103	52
STA. 173+50 TO STA. 195+00		ILLINOIS FED. AID PROJECT		
FED. ROAD DIST. NO. 7		CONTRACT # 60407 SHEET NO. S19 OF S60		

**SUPERSTRUCTURE  
BILL OF MATERIAL**

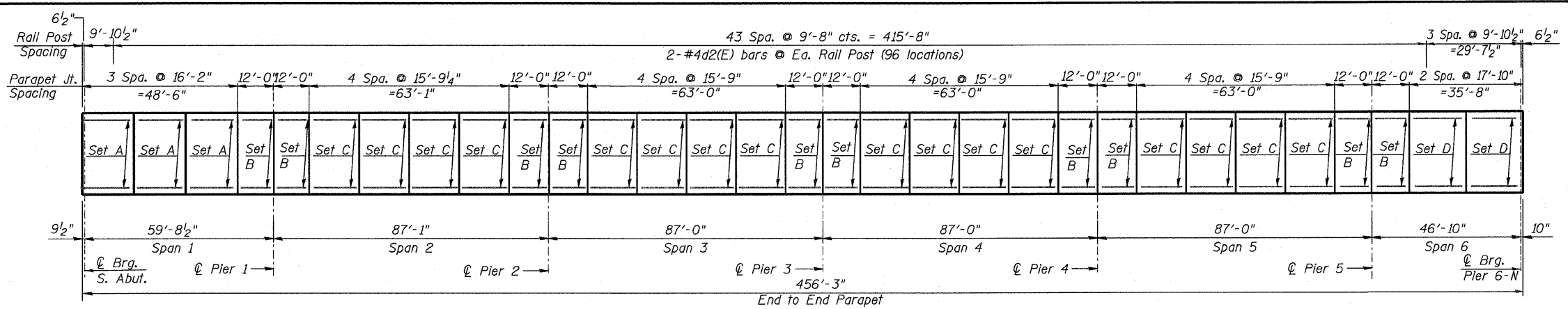
Bar	No.	Size	Length	Shape
a(E)	5,392	#5	49'-6"	—
a1(E)	3,988	#5	49'-2"	—
a2(E)	128	#5	2'-0"	—
a3(E)	198	#6	9'-7"	—
a4(E)	12	#6	46'-5"	—
a5(E)	48	#7	49'-6"	—
b(E)	1,638	#5	37'-2"	—
b1(E)	1,638	#5	31'-0"	—
b2(E)	1,638	#5	33'-9"	—
b3(E)	1,456	#5	34'-8"	—
b4(E)	1,456	#5	29'-0"	—
b5(E)	1,456	#5	31'-6"	—
b6(E)	1,000	#6	24'-10"	—
b7(E)	600	#6	25'-4"	—
b8(E)	800	#6	26'-7"	—
c(E)	1,248	#5	2'-5"	—
c1(E)	2,496	#5	8'-2"	—
c2(E)	1,248	#5	1'-6"	—
c3(E)	2,496	#5	3'-5"	—
d(E)	1,248	#4	5'-5"	—
d1(E)	1,248	#6	4'-4"	—
d2(E)	528	#4	2'-0"	—
d3(E)	1,248	#4	3'-0"	—
d4(E)	1,248	#6	3'-0"	—
d5(E)	1,248	#4	1'-6"	—
d6(E)	1,248	#6	1'-6"	—
e(E)	120	#4	11'-8"	—
e1(E)	96	#4	12'-5"	—
e2(E)	192	#4	15'-5"	—
e3(E)	108	#4	15'-9"	—
e4(E)	36	#4	16'-9"	—
e5(E)	144	#4	17'-1"	—
e6(E)	24	#4	17'-6"	—
e7(E)	42	#4	17'-11"	—
e8(E)	90	#4	18'-3"	—
e9(E)	54	#4	19'-0"	—
e10(E)	24	#4	19'-8"	—
x1(E)	196	#5	5'-11"	—
x2(E)	392	#5	5'-11"	—

Concrete Superstructure	Cu. Yd.	3,996.2
Reinforcement Bars, Epoxy Coated	Pound	976,680
Bridge Deck Grooving	Sq. Yd.	10,640
Protective Coat	Sq. Yd.	14,843

\* Bar has a threaded end.  
\*\* Bar has a coupler.

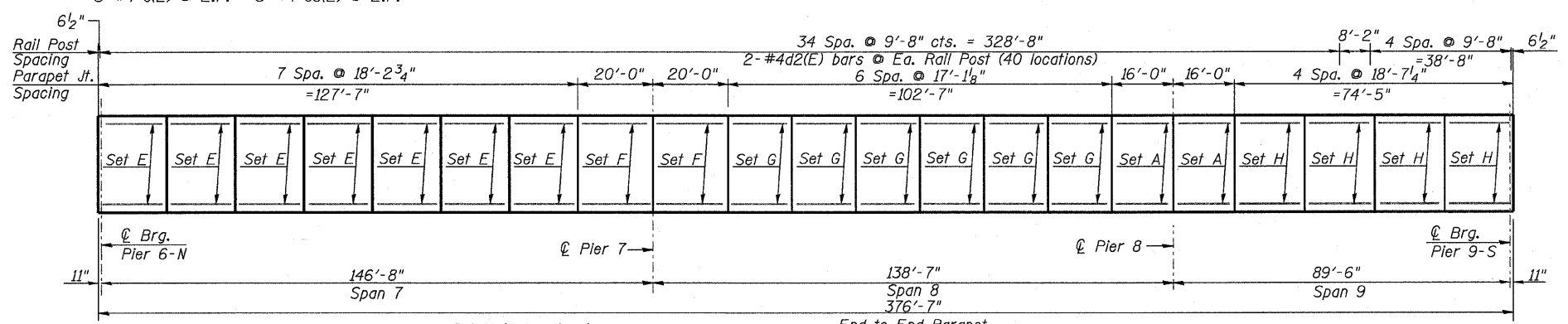
**Notes:**

1. Work this sheet with Sheets S15-S19.
2. See Sheet S20 for bar splicer details.
3. See Sheet S21-S22 for expansion joint details.
4. See Sheet S23 for bridge fence railing details.
5. See Sheets S44-S45 for drainage scupper details.
6. Bars indicated thus 20x3-#5 etc. indicates 20 lines of bars with 3 lengths per line.
7. Cut longitudinal reinforcement to clear scuppers.



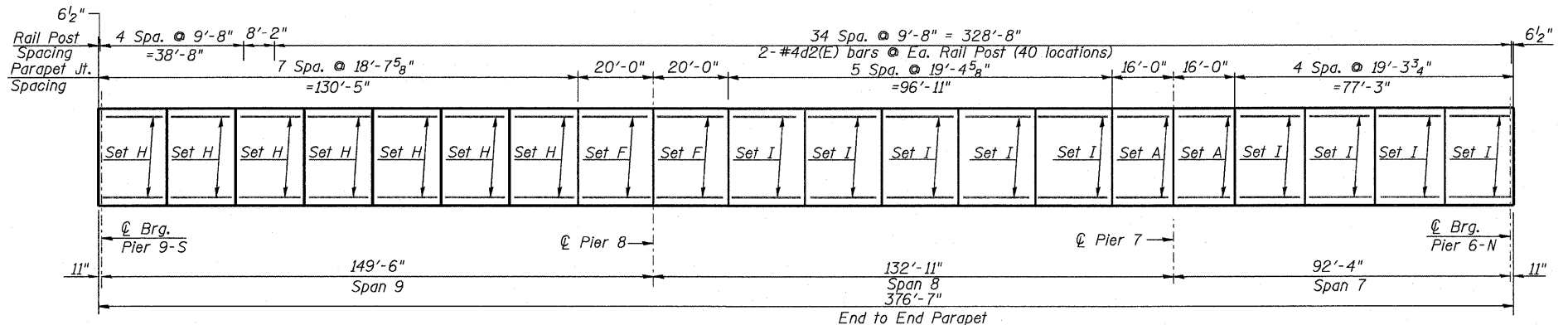
**INSIDE ELEVATION OF WEST PARAPET (UNIT 1)**  
(East Parapet Opposite Hand)

Set A (6 locations) 3-#4 e3(E) @ E.F.  
Set B (20 locations) 3-#4 e(E) @ E.F.  
Set C (32 locations) 3-#4 e2(E) @ E.F.  
Set D (4 locations) 3-#4 e6(E) @ E.F.



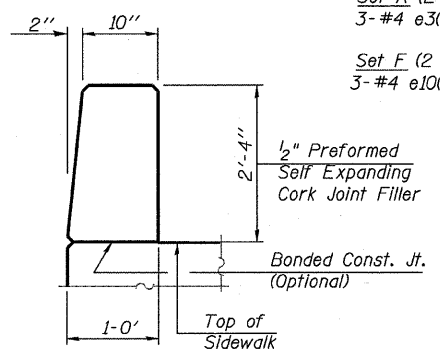
**INSIDE ELEVATION WEST PARAPET (UNIT 2)**

Set A (2 locations) 3-#4 e3(E) @ E.F.  
Set E (7 locations) 3-#4 e7(E) @ E.F.  
Set F (2 locations) 3-#4 e10(E) @ E.F.  
Set G (6 locations) 3-#4 e4(E) @ E.F.  
Set H (4 locations) 3-#4 e8(E) @ E.F.

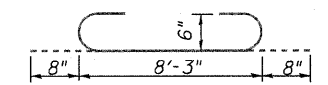


**INSIDE ELEVATION EAST PARAPET (UNIT 2)**

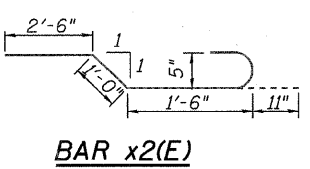
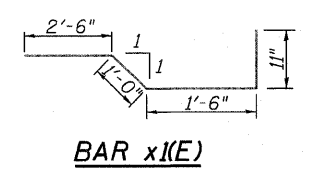
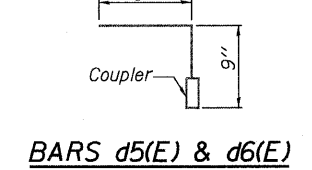
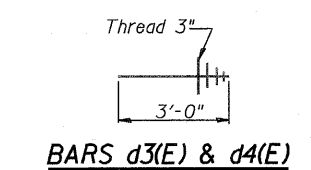
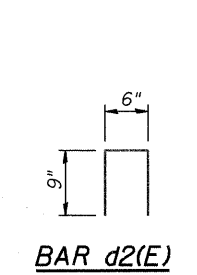
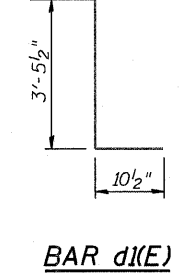
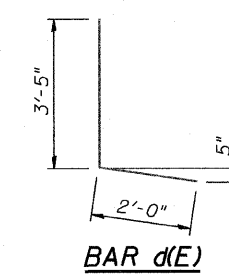
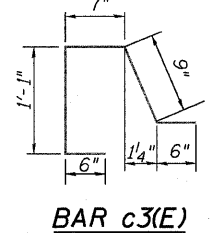
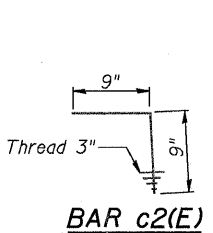
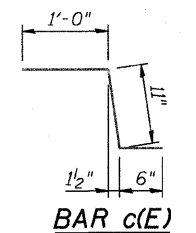
Set A (2 locations) 3-#4 e3(E) @ E.F.  
Set F (2 locations) 3-#4 e10(E) @ E.F.  
Set H (7 locations) 3-#4 e8(E) @ E.F.  
Set I (9 locations) 3-#4 e9(E) @ E.F.



**PARAPET JOINT DETAILS**



For the 18-a3(E) bars crossing the longitudinal stage construction joint, cut bars in half & use each side.



REVISIONS	
NAME	DATE

ILLINOIS DEPARTMENT OF TRANSPORTATION  
**SUPERSTRUCTURE DETAILS**  
FAP 330 US 12/45 (MANNHEIM RD.) OVER  
500 LINE RR & FRANKLIN AVE.  
STRUCTURE NO. 016-2815  
SECTION 465 VB-R-1  
STA. 183+33.30  
DATE 7/2009

COOK COUNTY  
DRAWN BY JHR  
CHECKED BY CLS

**EARTH TECH | AECOM**