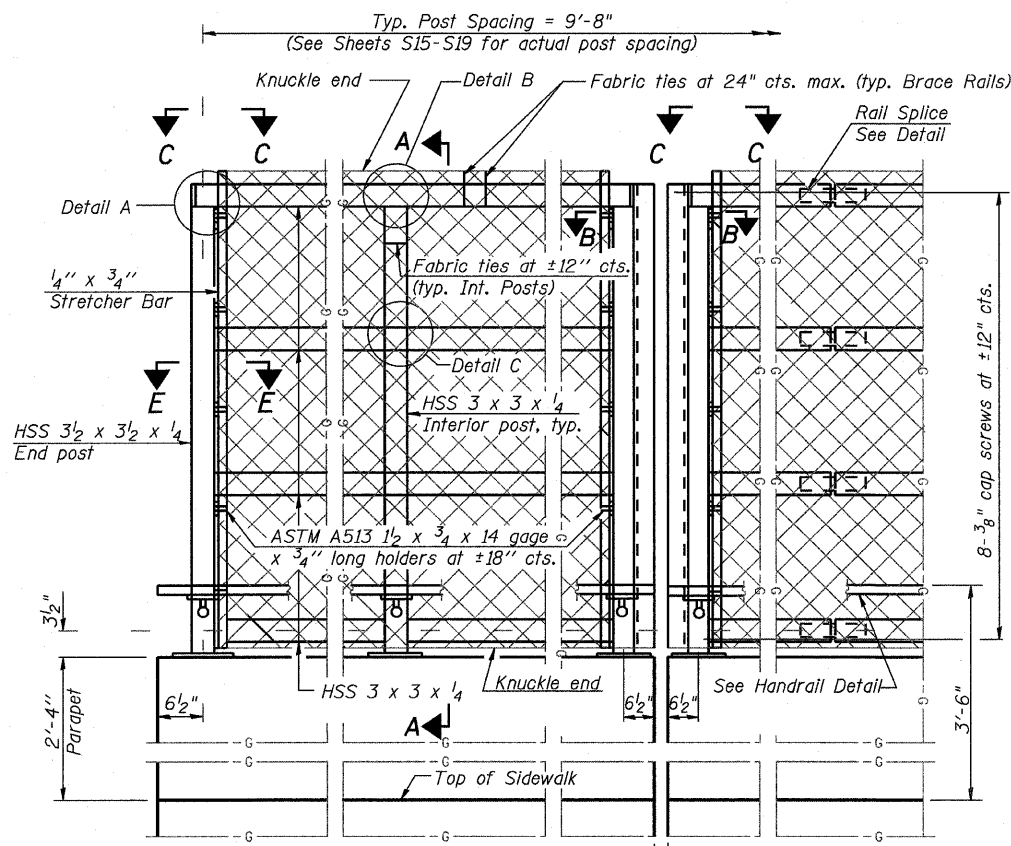
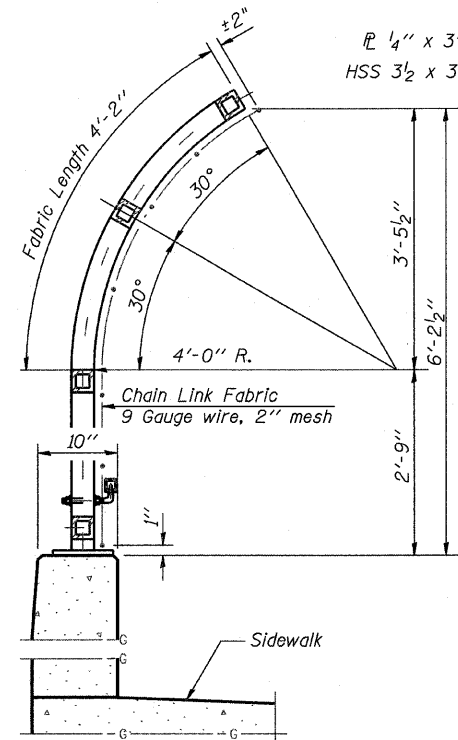


F.A.P.	SECTION	COUNTY	TOTAL SHEETS	SHEET NO.
330	465 VB-R-1	COOK	103	56
STA. 173+50 TO STA. 195+00		ILLINOIS FED. AID PROJECT		
FED. ROAD DIST. NO. 7		CONTRACT # 60407 SHEET NO. S23 of S60		

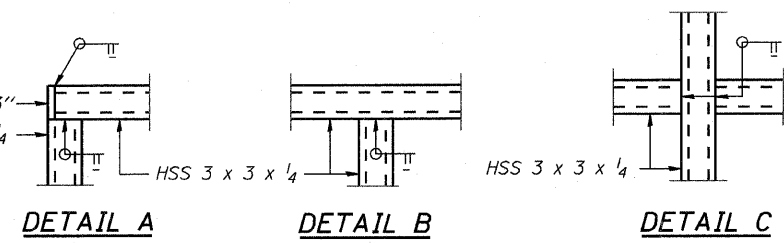
All steel rail elements shall be galvanized according to Article 509.05 of the Standard Specifications.



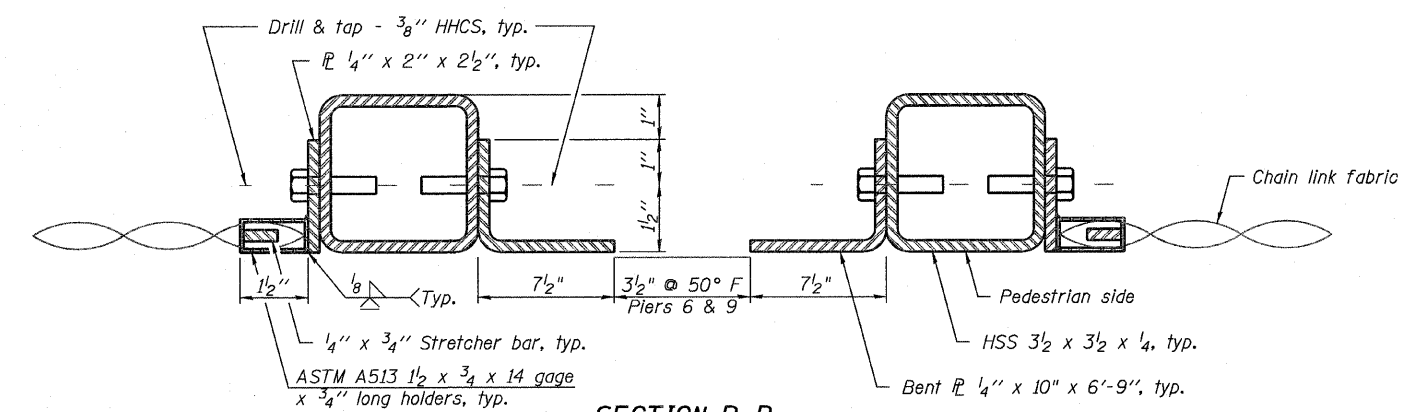
**ELEVATION**  
(Inside Face)



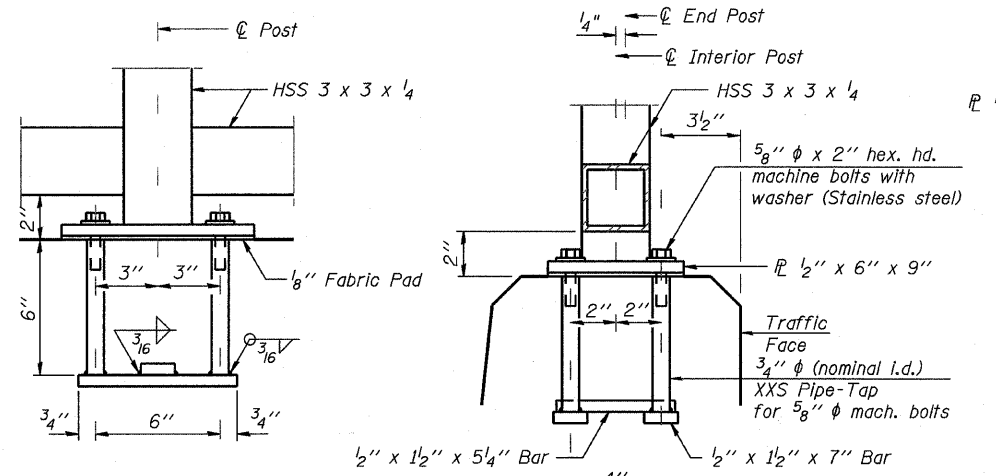
**SECTION A-A**



**DETAIL A**      **DETAIL B**      **DETAIL C**

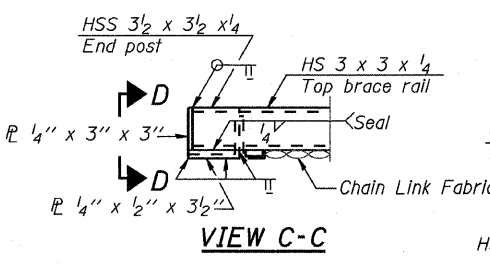


**SECTION B-B**  
(At Expansion Joint)

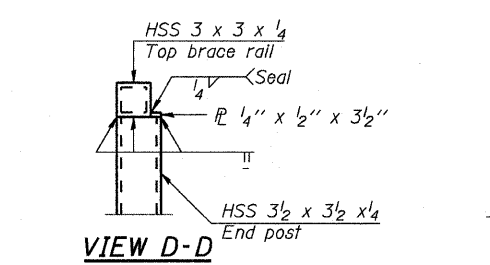


**ANCHOR BOLT DETAILS**

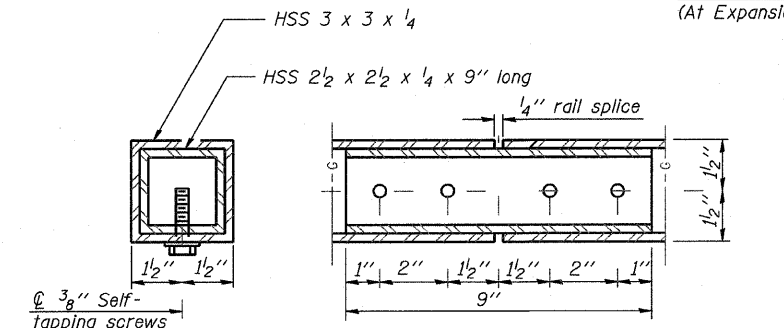
In lieu of the cast-in-place anchor device shown, the Contractor has the option of drilling and setting 5/8 inch diameter anchor rods according to Article 509.06 of the Standard Specifications. Embedment shall be according to the manufacturer's specifications.



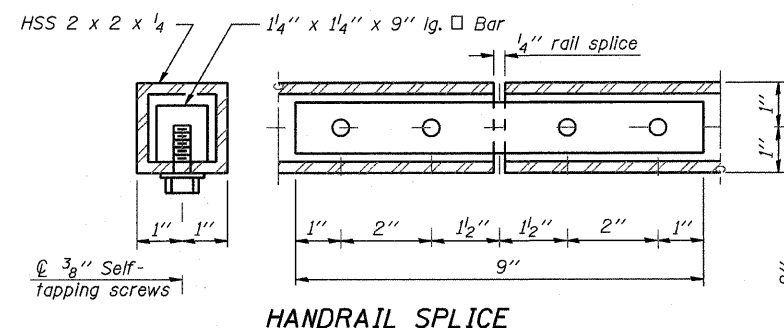
**VIEW C-C**



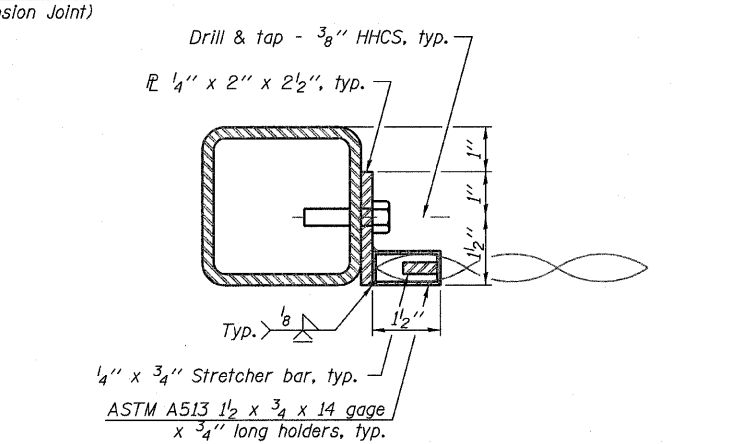
**VIEW D-D**



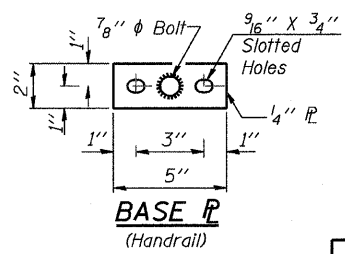
**RAIL SPLICE**



**HANDRAIL SPLICE**



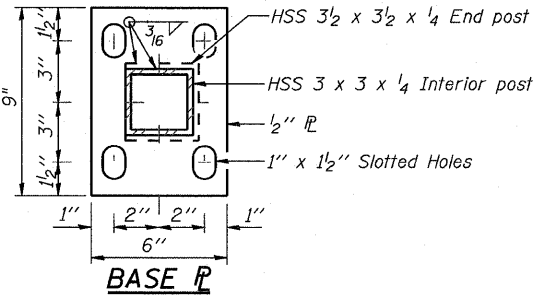
**SECTION E-E**



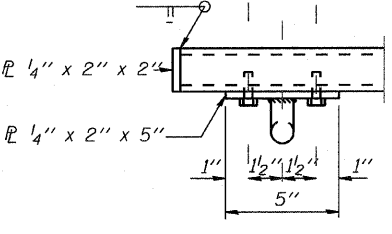
**BASE PL**  
(Handrail)

**BILL OF MATERIAL**

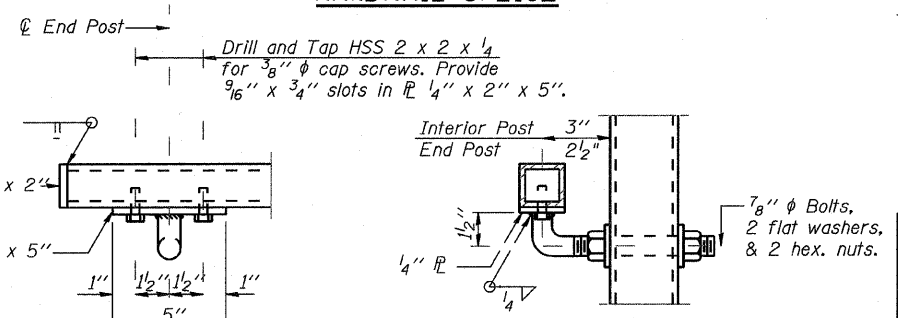
Item	Unit	Total
Bridge Fence Railing	Foot	2,490



**BASE PL**



**HANDRAIL DETAIL**



**EARTH TECH | AECOM**

REVISIONS	
NAME	DATE

ILLINOIS DEPARTMENT OF TRANSPORTATION  
**BRIDGE FENCE RAILING**  
**PARAPET MOUNTED**  
 FAP 330 US 12/45 (MANNHEIM RD.) OVER  
 500 LINE RR & FRANKLIN AVE.  
 STRUCTURE NO. 016-2815  
 SECTION 465 VB-R-1 COOK COUNTY  
 STA. 183+33.30 DRAWN BY JHR  
 DATE 7/2009 CHECKED BY CLS