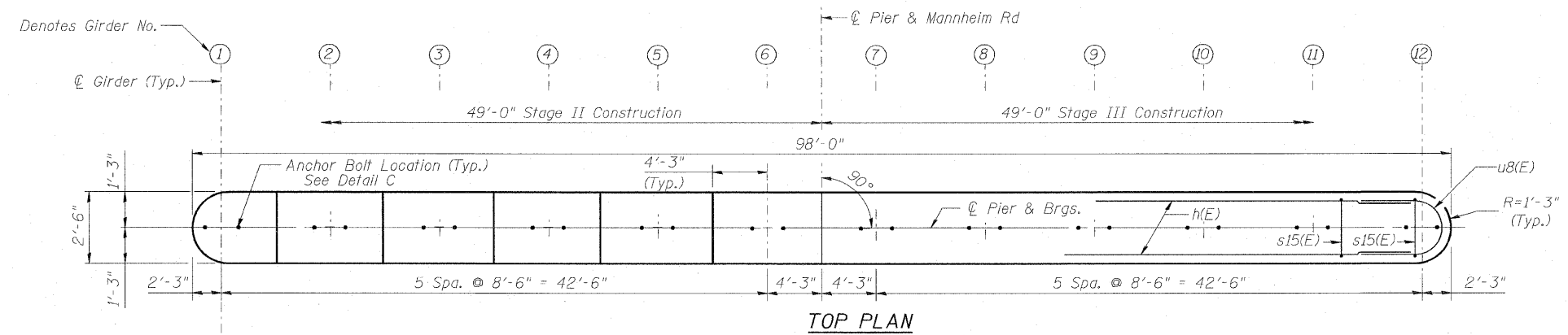
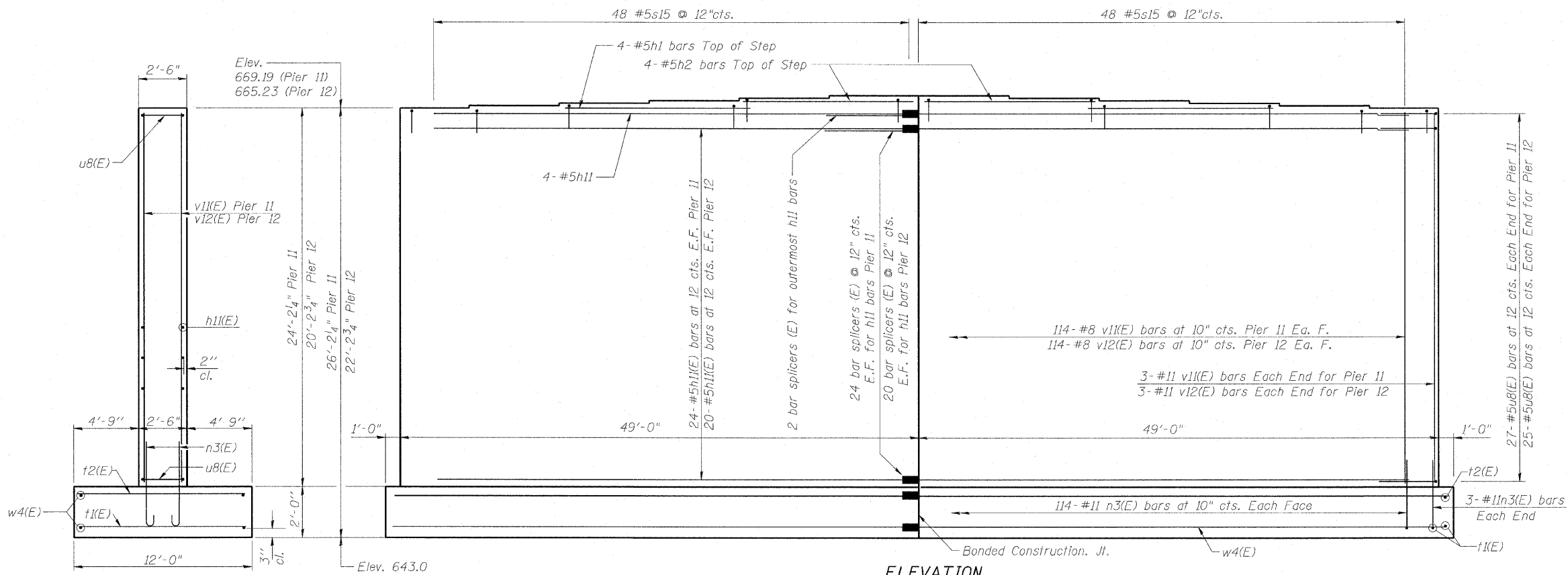


F.A.P.	SECTION	COUNTY	TOTAL SHEETS	SHEET NO.
330	465 VB-R-1	COOK	103	69
STA. 173+50 TO STA. 195+00		FED. ROAD DIST. NO. 7 ILLINOIS FED. AID PROJECT		
Contract # 60407		SHEET NO. S36 of S60		

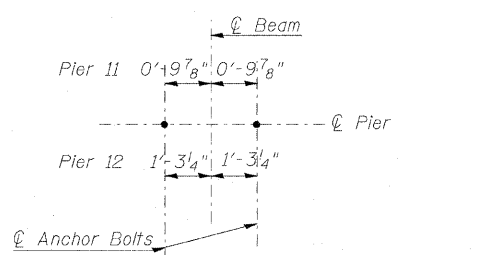


FOUNDATION DATA

Max Applied Bearing Pressure=4.3 ksf

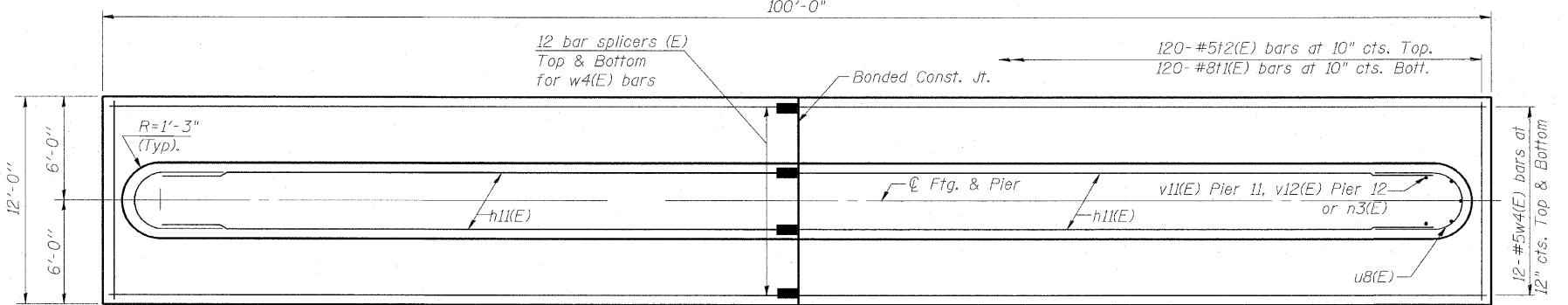


ELEVATION
(Looking Upstation)



DETAIL "C"
BEARING ANCHOR BOLTS LOCATION

END VIEW



FOOTING PLAN

Notes:

1. Space reinforcement in top of pier to miss anchor bolts. Pour steps monolithically with cap.
 2. Pier cap reinforcement is the same on both sides of joint.
 3. See Sheet S43 for reinforcement details & bill of material.
 4. See Section B-B on Sheet S60 for embedment details regarding attachment of the precast panels for the Maintenance Enclosure located between Piers 11 & 12.
- Min. Lap Splice
 #5 = 1'-8"
 #8 = 4'-6"
 #10 = 7'-3"

REVISIONS	
NAME	DATE

ILLINOIS DEPARTMENT OF TRANSPORTATION
PIERS 11 & 12
 FAP 330 US 12/45 (MANNHEIM RD.) OVER
 500 LINE RR & FRANKLIN AVE.
 STRUCTURE NO. 0J6-2815
 SECTION 465 VB-R-1
 STA. 183+33.30
 DATE 7/2009

COOK COUNTY
 DRAWN BY JHR
 CHECKED BY OPY

EARTH TECH | AECOM