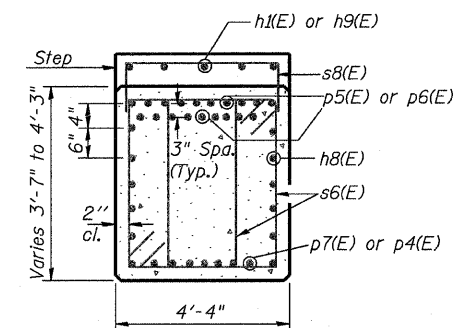
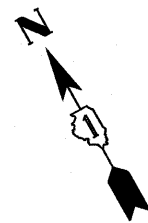
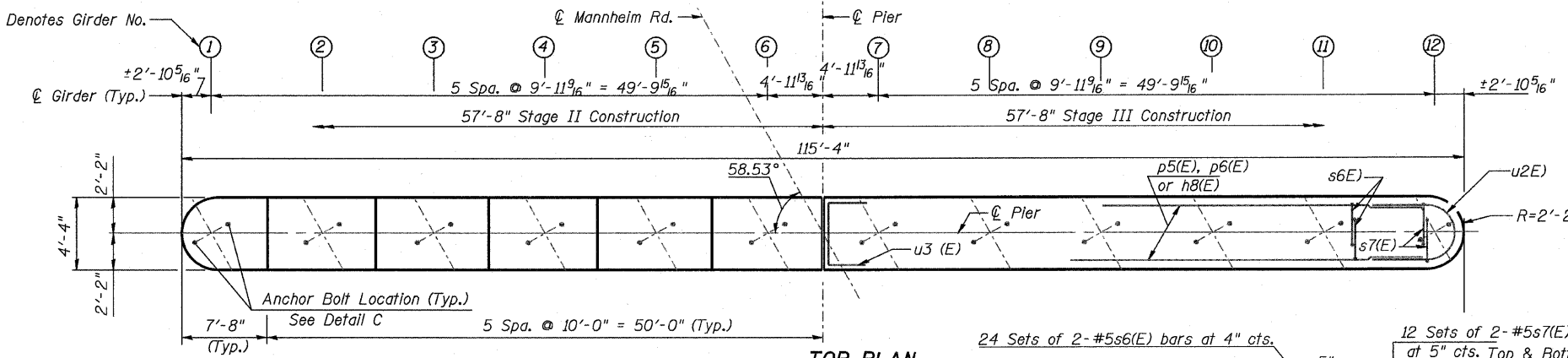


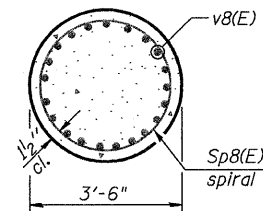
| | | | | |
|----------------------------|------------|---|--------------|-----------|
| F.A.P. | SECTION | COUNTY | TOTAL SHEETS | SHEET NO. |
| 330 | 465 VB-R-1 | COOK | 103 | 72 |
| STA. 173+50 TO STA. 195+00 | | FED. ROAD DIST. NO. 7 ILLINOIS FED. AID PROJECT | | |
| Contract # 60407 | | SHEET NO. S39 of S60 | | |

PILE DATA

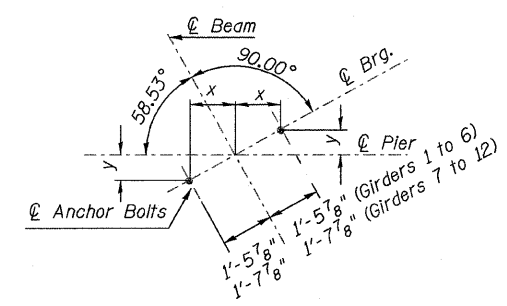
Type: HP 14x73
 Nominal Req'd Bearing: 578 Kip
 Allowable Resistance: 192 Kip
 Est. Length: 50'
 No. Production Piles: 51
 No. Test Piles: 1.



SEC. H-H



SEC. J-J



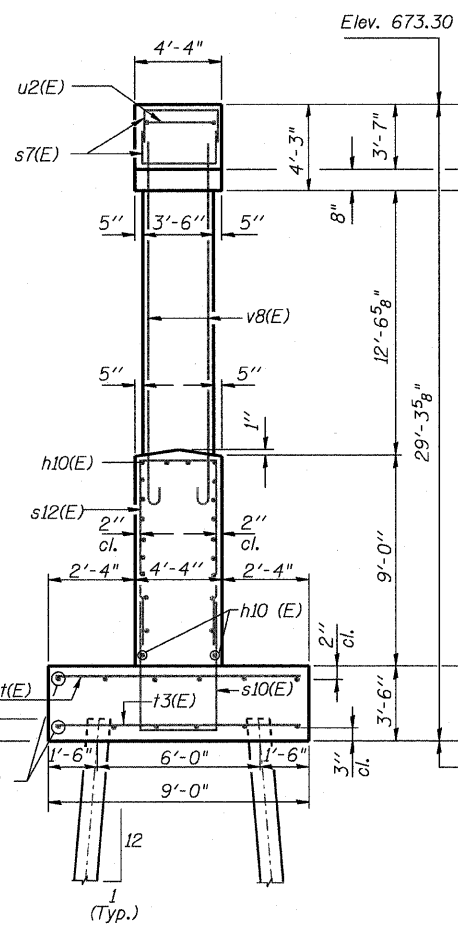
DETAIL 'C' BEARING ANCHOR BOLTS LOCATION

$x=1'-3\frac{1}{4}"$, $y=9\frac{3}{8}"$ (Girders 1-6)
 $x=1'-5"$, $y=10\frac{3}{8}"$ (Girders 7-12)

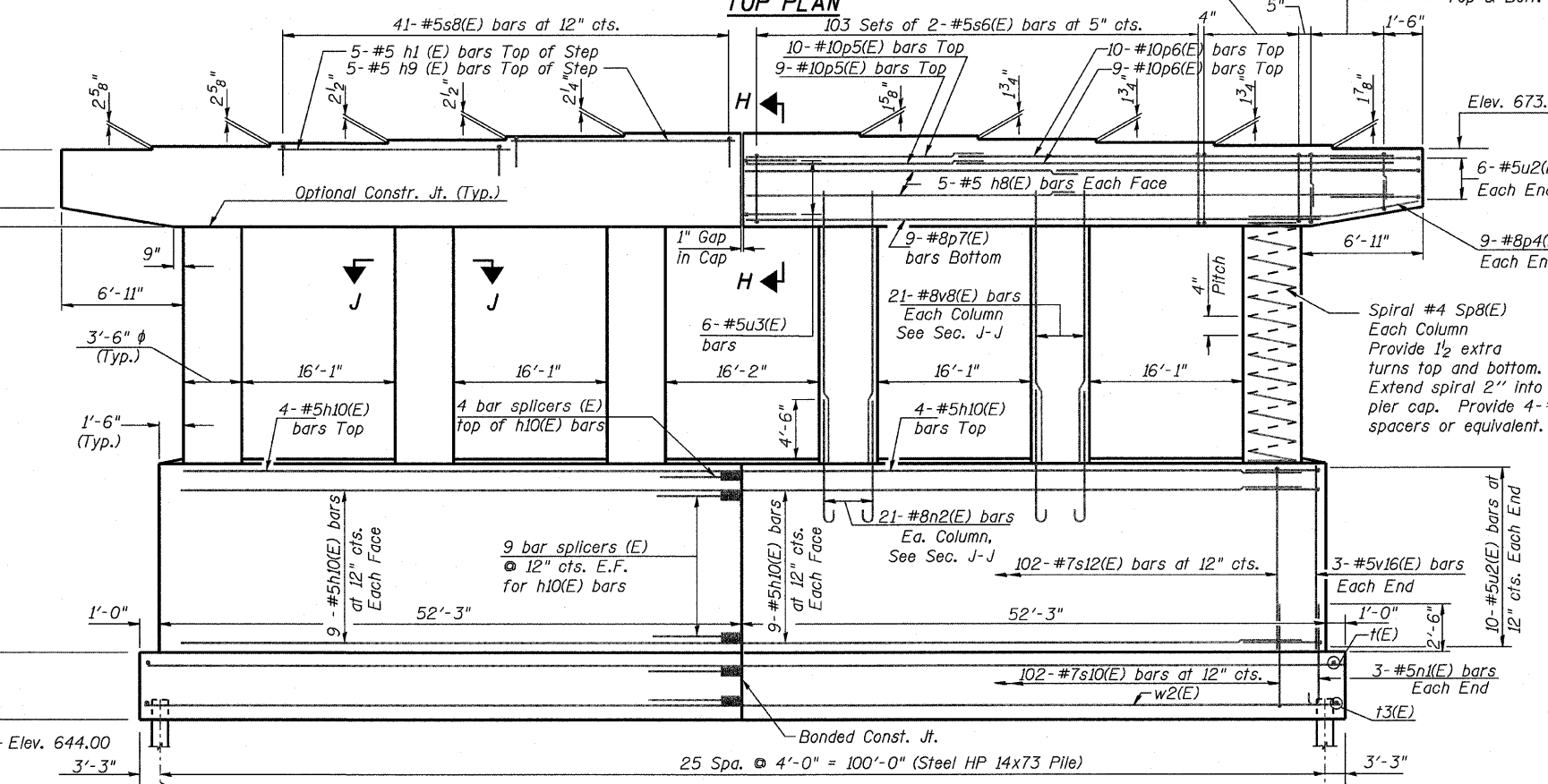
Notes:

- Space reinforcement in cap to miss anchor bolts. Pour steps monolithically with cap.
- Pier cap reinforcement is the same on both sides of 1" gap.
- See Sheet S42 for bill of material & Sheet S43 for details.

Min. Lap Splice
 #5 = 1'-8"
 #8 = 4'-6"
 #10 = 7'-3"

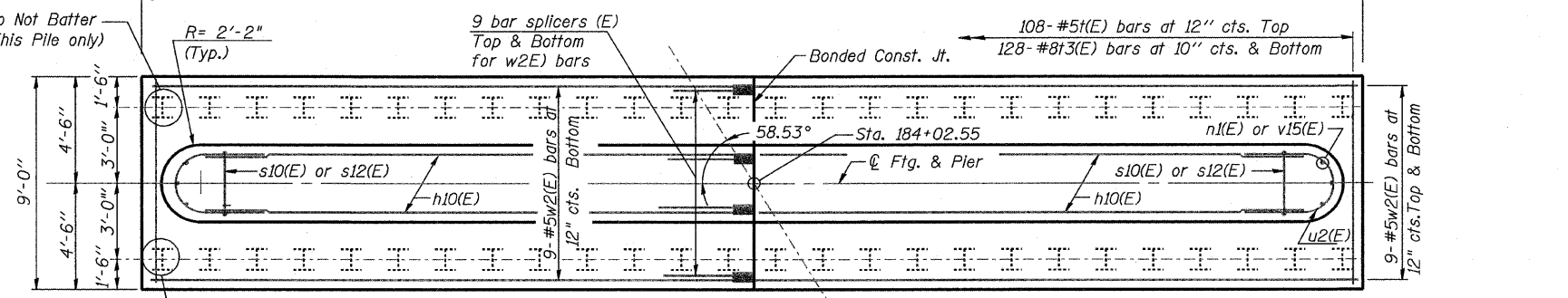


END VIEW



ELEVATION

(Looking Upstation)



FOOTING PLAN

| REVISIONS | | ILLINOIS DEPARTMENT OF TRANSPORTATION |
|-----------|------|---|
| NAME | DATE | |
| | | PIER 8 FAP 330 US 12/45 (MANNHEIM RD.) OVER 500 LINE RR & FRANKLIN AVE. STRUCTURE NO. 016-2815 SECTION 465 VB-R-1 STA. 183+33.30 DATE 7/2009 |
| | | |
| | | |
| | | |
| | | |

EARTHTECH | AECOM