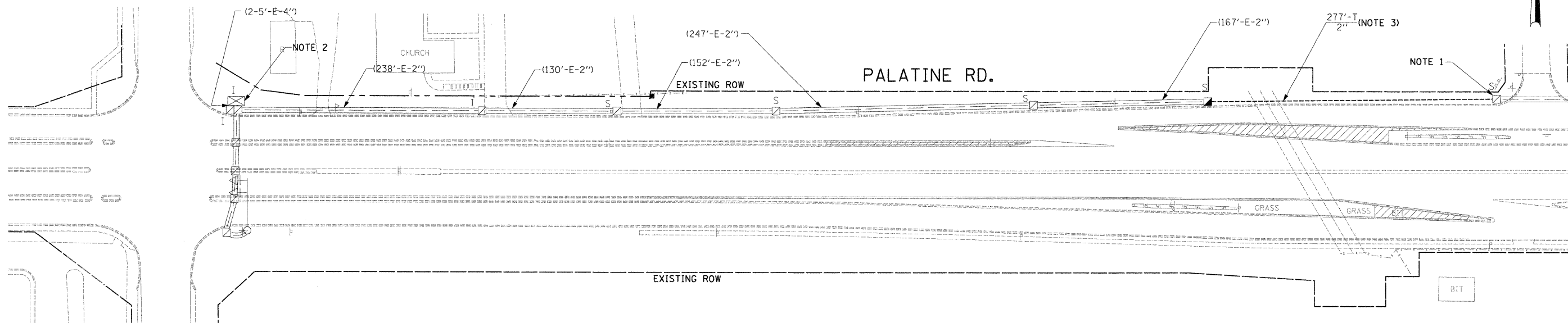


FOR ALL TEMPORARY AND PERMANENT INTERCONNECT QUANTITIES SEE SHEET NO. 18L "INTERCONNECT SCHEMATIC PLAN"

SCHOENBECK RD

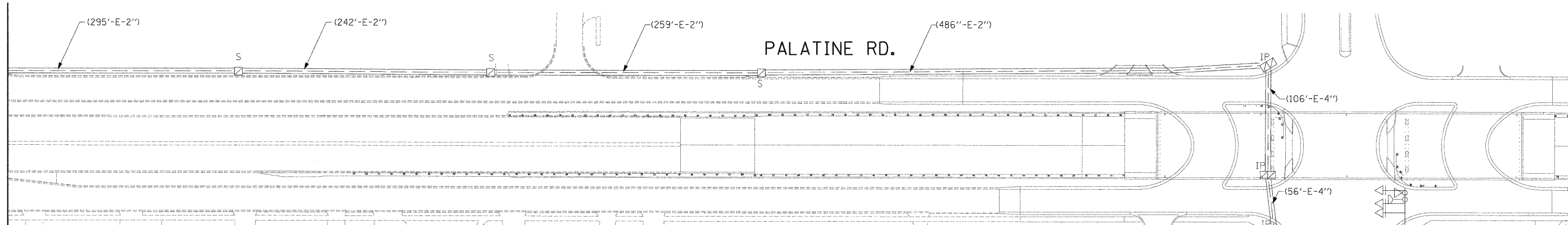
PALATINE RD.

MATCH LINE 351+00



2

MATCH LINE 351+00



INTERCONNECT PLAN LEGEND

	PROPOSED	EXISTING		PROPOSED	EXISTING
CONTROLLER			DOUBLE HANDHOLE		
SERVICE INSTALLATION			GALVANIZED STEEL CONDUIT IN TRENCH OR PUSHED		
SIGNAL HEAD			PEDESTRIAN PUSHBUTTON DETECTOR		
SIGNAL HEAD WITH BACKPLATE			EMERGENCY VEHICLE SYSTEM DETECTOR		
SIGNAL HEAD, PEDESTRIAN			CONFIRMATION BEACON		
SIGNAL POST			SIGNAL HEAD, OPTICALLY PROGRAMMED		
MAST ARM ASSEMBLY AND POLE, STEEL			WIRELESS INTERCONNECT ANTENNA		
MAST ARM ASSEMBLY AND POLE, ALUMINUM					
COMBINATION MAST ARM ASSEMBLY AND POLE, STEEL WITH LUMINAIRE					
UNIT DUCT	UD				
COMMON TRENCH	CT				
HANDHOLE					
HEAVY DUTY HANDHOLE					

NOTES:

- NOTE 1: PRIOR TO REMOVAL OF THE INTERCONNECT CONDUIT IN THE CONSTRUCTION AREA OF THE PROPOSED BOX CULVERT, THE EXISTING TRACER CABLE SHALL BE DISCONNECTED AT THE EXISTING CONTROLLER AT THE INTERSECTION OF SCHOENBECK ROAD AND PALATINE ROAD, PULLED BACK, COILED, AND STORED IN THIS HANDHOLE UNTIL NEEDED FOR PROPOSED INTERCONNECT WORK.
- NOTE 2: AFTER THE WIRELESS INTERCONNECT BETWEEN SCHOENBECK ROAD AND ILLINOIS ROUTE 83 (ELMHURST ROAD) ON PALATINE ROAD IS IN PLACE AND IN OPERATION, THE EXISTING FIBER OPTIC CABLE BETWEEN THESE TWO INTERSECTIONS SHALL BE DISCONNECTED AT EACH CONTROLLER AND REMOVED FROM THE CONDUITS. NEW INTERCONNECT CABLE SHALL BE INSTALLED IN ITS PLACE AFTER THE NEW CONDUITS AND HANDHOLES ARE CONSTRUCTED IN THE VICINITY OF THE PROPOSED BOX CULVERT AS SHOWN IN THE PLANS AND AS DIRECTED BY THE ENGINEER.
- NOTE 3: WHERE THE PROPOSED 2" CONDUIT IS CROSSING THE PROPOSED BOX CULVERT, THE CONDUIT SHALL BE INSTALLED ON TOP OF THE PROPOSED BOX CULVERT AND SHALL BE PAID FOR AS "CONDUIT IN TRENCH" AND IS INCLUDED IN THE PAY ITEM. THE "TRENCH AND BACKFILL FOR ELECTRICAL WORK" IS NOT CONSIDERED FOR PAYMENT FOR THE PORTION OF THE PROPOSED 2" CONDUIT INSTALLED ON TOP OF THE BOX CULVERT.



ELMHURST RD.

Added 10/9/09

GO GANDHI AND ASSOCIATES, INC.
ENGINEERS AND PLANNERS
6035 N. NORTHWEST HIGHWAY
SUITE 306
CHICAGO, ILLINOIS 60631 TEL: 773/774-5910

FILE NAME = \$FILEL\$	USER NAME = \$USER\$	DESIGNED - PKG	REVISED -	STATE OF ILLINOIS DEPARTMENT OF TRANSPORTATION	INTERCONNECT PLAN PALATINE ROAD SCHOENBECK ROAD TO ELMHURST RD.			F.A.P. RTE. 305	SECTION 0913.1-T	COUNTY COOK	TOTAL SHEETS 39	SHEET NO. 18J
	PLOT SCALE = \$SCALE\$	DRAWN - MAA, SHM	REVISED -		SCALE: 1"= 50'	SHEET NO.	OF	SHEETS	STA.	TO STA.	FED. ROAD DIST. NO. 1	ILLINOIS FED. AID PROJECT
	PLOT DATE = \$DATE\$	CHECKED - PKG	REVISED -								CONTRACT NO. 60E53	