

F.A. RTE.	SECTION	COUNTY	TOTAL SHEETS	SHEET NO.
305	0913.1-T	COOK	39	1
FED. ROAD DIST. NO. 1	ILLINOIS	CONTRACT NO. 60E53		

D-91-440-08 *39+14-53

FOR INDEX OF SHEETS, SEE SHEET NO. 2

DESIGN DESIGNATION

PALATINE ROAD: FC 30 - OTHER PRINCIPAL ARTERIAL
FRONTAGE ROAD: FC 90 - LOCAL ROAD

TRAFFIC DATA

2008 ADT = 30,000 - PALATINE ROAD
2020 ADT = 54,000 - PALATINE ROAD

POSTED SPEED LIMIT

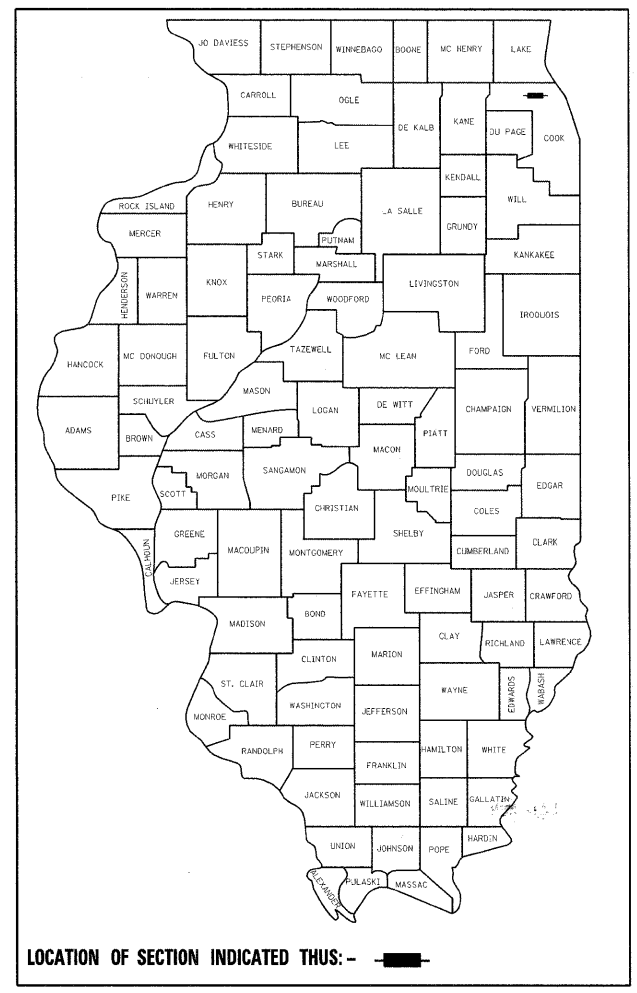
PALATINE MAINLINE - 45 MPH
FRONTAGE ROADS - 30 MPH

**PROJECT LOCATED IN
THE CITY OF
PROSPECT HEIGHTS**

STATE OF ILLINOIS
DEPARTMENT OF TRANSPORTATION
DIVISION OF HIGHWAYS

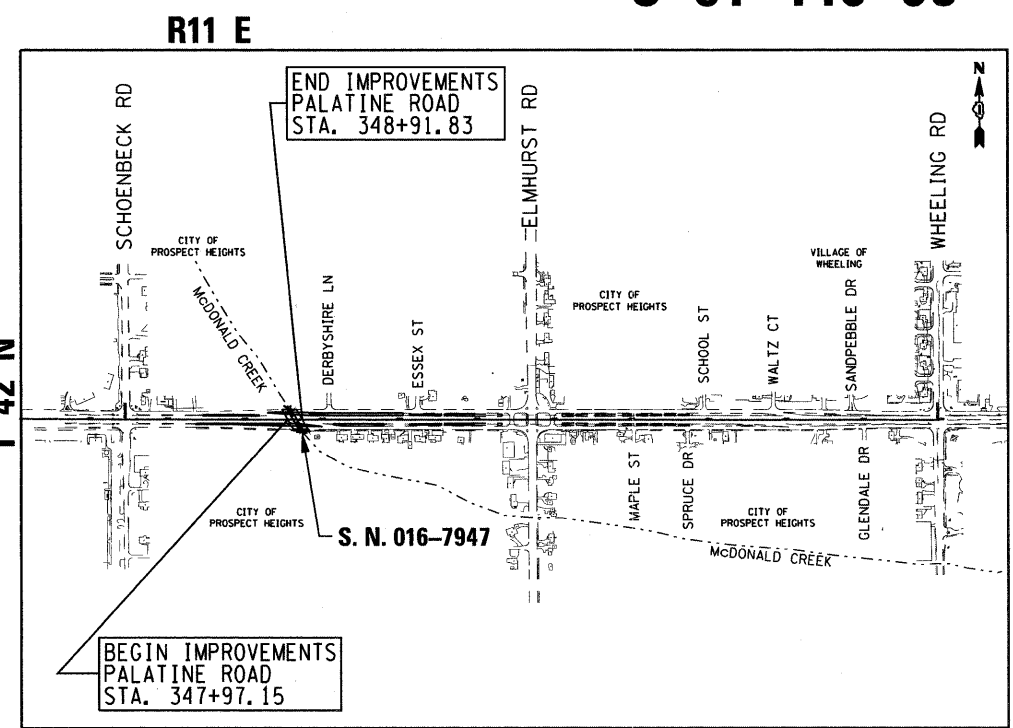
**PROPOSED
HIGHWAY PLANS**

FAP ROUTE 305 (PALATINE ROAD)
SECTION: 0913.1-T
McDONALD CREEK BOX CULVERT REPLACEMENT
PROJECT NO.: ACNHF-0305(042)
COOK COUNTY
C-91-440-08



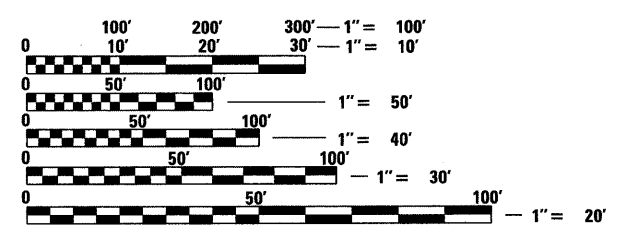
LOCATION OF SECTION INDICATED THUS: -

McDONALD CREEK BOX CULVERT UNDER PALATINE RD
STATION 348+44.50
STRUCTURE NO 016-7947
BOX CULVERT REPLACEMENT



WHEELING TOWNSHIP
MAP SCALE: 0 0.1 0.2 0.3 0.4 0.5 MILE

GROSS LENGTH OF IMPROVEMENTS = 94.68 LIN. FT. (= 0.018 MILES)
NET LENGTH OF IMPROVEMENTS = 94.68 LIN. FT. (= 0.018 MILES)



FULL SIZE PLANS HAVE BEEN PREPARED USING STANDARD ENGINEERING SCALES. REDUCED SIZED PLANS WILL NOT CONFORM TO STANDARD SCALES. IN MAKING MEASUREMENTS ON REDUCED PLANS, THE ABOVE SCALES MAY BE USED.

J.U.L.I.E.
JOINT UTILITY LOCATION INFORMATION FOR EXCAVATION
1-800-892-0123
OR 811

PROJECT MANAGER: ISAAC KWARTENG
847-705-4230

CONTRACT NO. 60E53



THOMAS M. HEIN, P. E.
IL. LIC. NO. 062-053199
EXP 11-30-09
DATE 6-24-09



DEBORAH A. ZROKA, S.E.
IL. LIC. NO. 081-005152
EXP 11-30-10
DATE 6-24-09

STATE OF ILLINOIS
DEPARTMENT OF TRANSPORTATION
DIVISION OF HIGHWAYS
SUBMITTED June 25 20 09
Devin O'Keefe
DEPUTY DIRECTOR OF HIGHWAYS, REGION ENGINEER
October 2, 20 09
Charles G. Ingersoll
ENGINEER OF DESIGN AND ENVIRONMENT
October 2, 20 09
Christine M. Reed
DIRECTOR OF HIGHWAYS, CHIEF ENGINEER



**PRINTED BY THE AUTHORITY
OF THE STATE OF ILLINOIS**