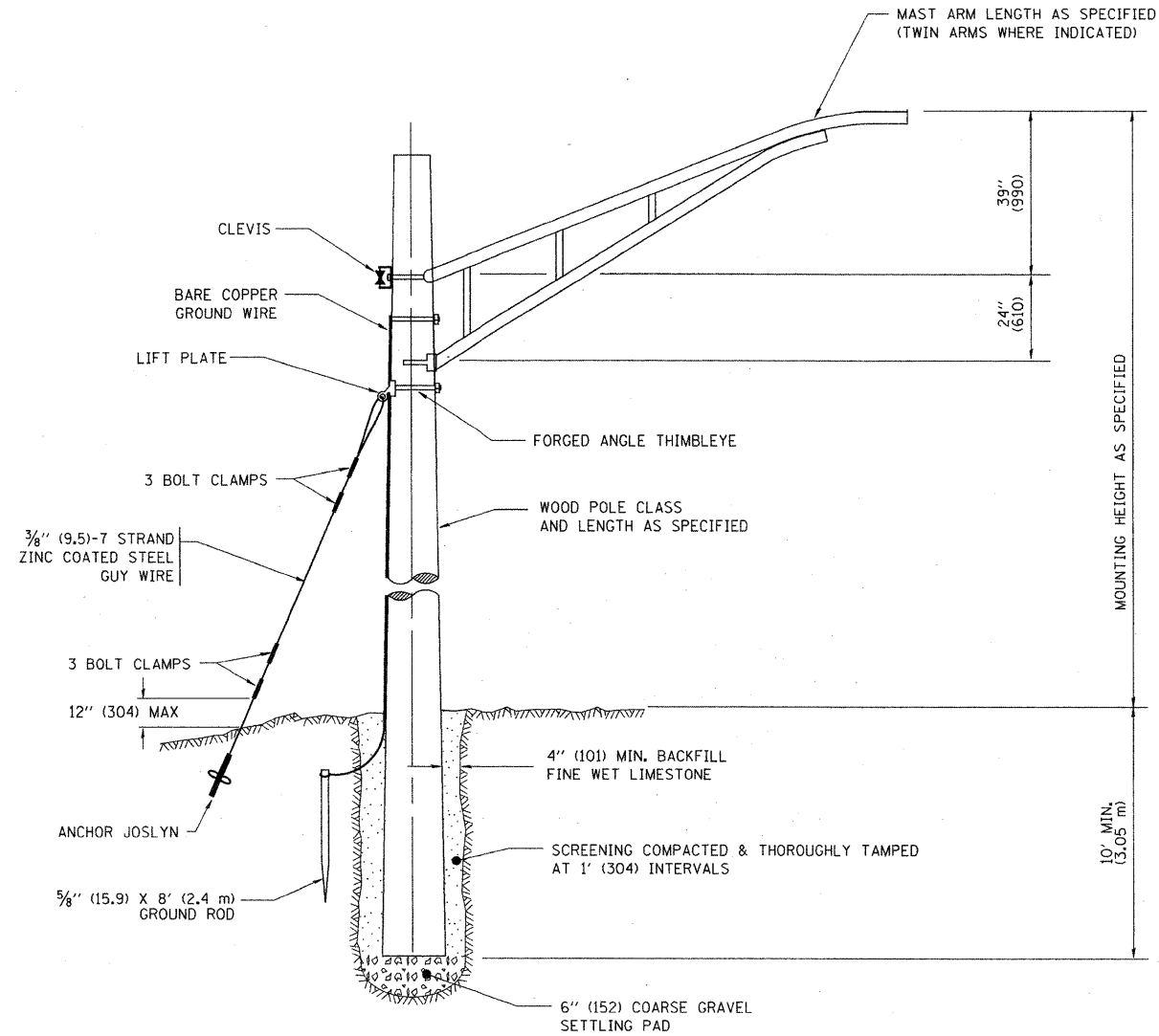


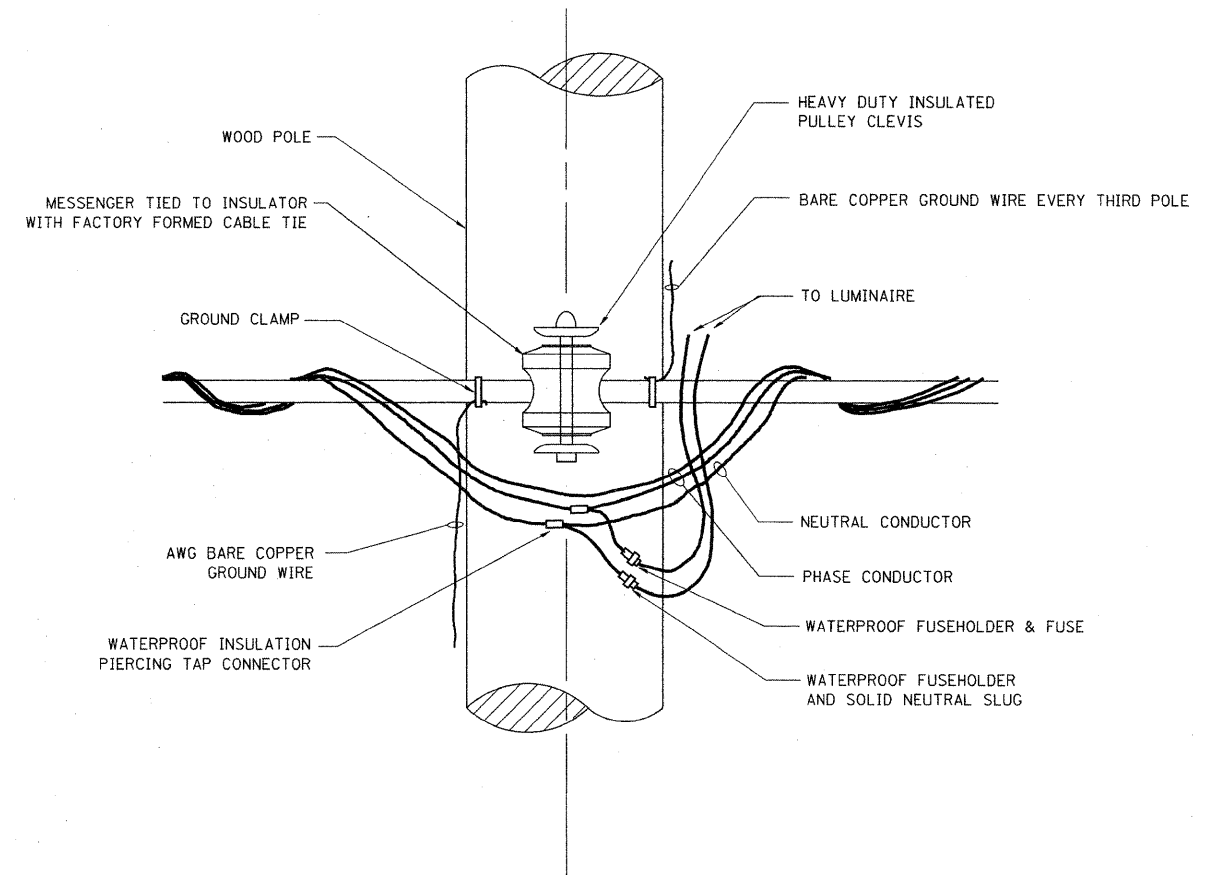
CONTRACT NO.				
F.A.P. RTE.	SECTION	COUNTY	TOTAL SHEETS	SHEET NO.
305	0913.1-T	COOK	39	25
STA.		TO STA.		
FED. ROAD DIST. NO.		ILLINOIS FED. AID PROJECT		



TEMPORARY LIGHT POLE DETAIL

NOTES:

1. ALL DIMENSIONS IN INCHES (MILLIMETERS) UNLESS OTHERWISE INDICATED



TEMPORARY LIGHT POLE ATTACHMENT DETAIL

PLOT DATE = 4/18/2007
 FILE NAME = K:\data\104\104000.dgn
 PLOT SCALE = 1/8" = 1' IN.
 USER NAME = bauerd

REVISIONS	
NAME	DATE
	08/08/03

ILLINOIS DEPARTMENT OF TRANSPORTATION
 TEMPORARY LIGHT POLE
 DETAILS
 SCALE: VERT. NONE
 HORIZ.
 DRAWN BY
 CHECKED BY
 BE-800