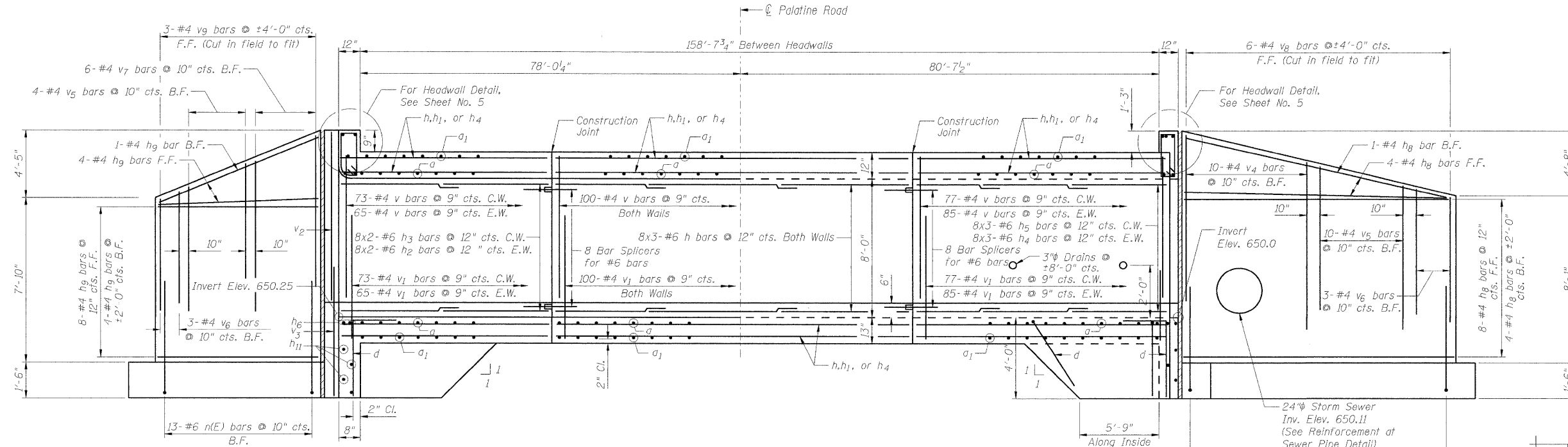
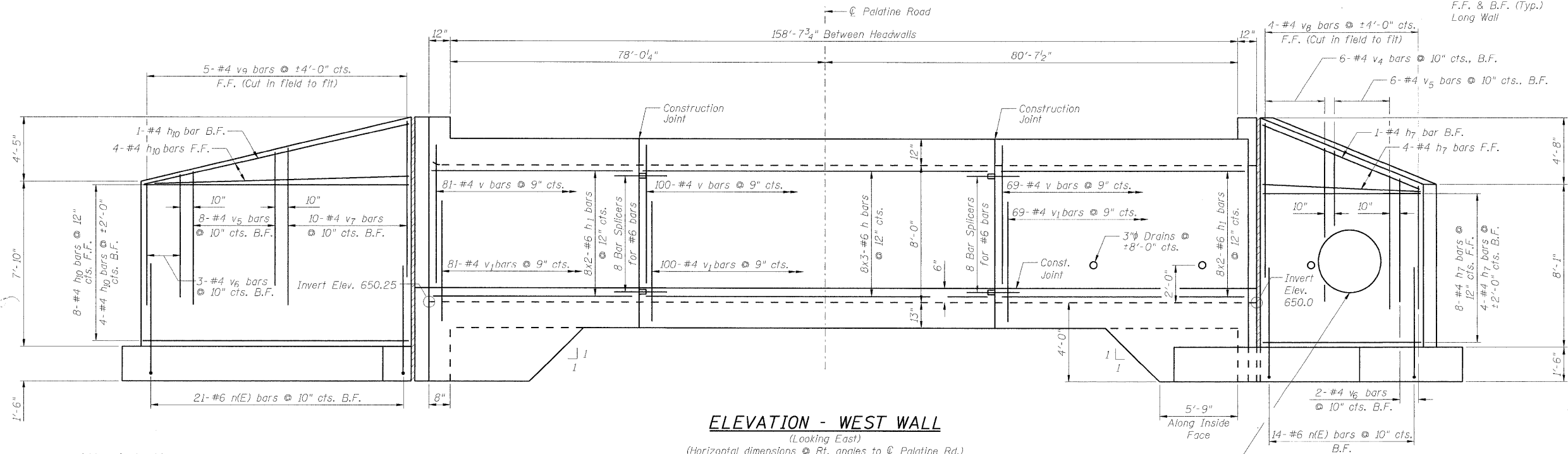


STATE OF ILLINOIS
DEPARTMENT OF TRANSPORTATION



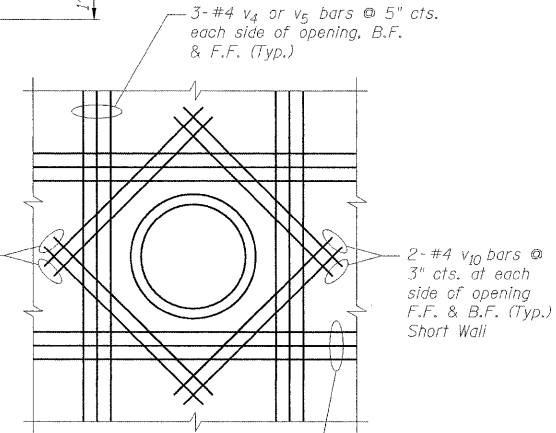
**LONGITUDINAL SECTION
CENTER & EAST WALLS**

(Looking East)
(Horizontal dimensions @ Rt. angles to ϕ Palatine Rd.)



ELEVATION - WEST WALL

(Looking East)
(Horizontal dimensions @ Rt. angles to ϕ Palatine Rd.)



**REINFORCEMENT AT
SEWER PIPE**

Cut horizontal and vertical bars to fit opening and add reinforcement as indicated.

**CULVERT SECTIONS
PALATINE ROAD OVER McDONALD CREEK
SECTION 0913.1-T
COOK COUNTY
STA. 348+44.50
STRUCTURE NO. 016-7947**

C.W. = Center Wall
E.W. = East Wall
B.F. = Back Face
F.F. = Front Face

NOTES

1. Bars indicated thus: 8x2-#6 ets. indicates 8 lines of bars with 2 lengths per line.
2. Minimum Bar Laps (Unless noted otherwise)

	Barrels	Wingwalls
#4 bars	1'-4"	1'-8"
#5 bars	1'-8"	2'-2"
#6 bars	2'-0"	2'-7"

54" Storm Sewer
Inv. Elev. 650.59
(See Reinforcement at
Sewer Pipe Detail)

ZROKA
engineering
Zroka Engineering, P.C.
4216 North Hermitage
Chicago, IL 60613

Date: 02-20-09 Drawn By: SW Checked By: HT

SHEET NO. 4 OF 8 SHEETS	F.A.P. RTE. 305	SECTION 0913.1-T	COUNTY COOK	TOTAL SHEETS 39	SHEET NO. 29
	SN 016-7947		CONTRACT NO. 60E53		
FED. ROAD DIST. NO. 7 ILLINOIS FED. AID PROJECT					