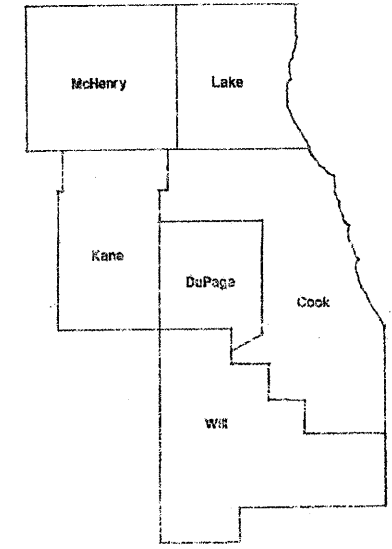


ROUTE	SECTION	COUNTY	TOTAL SHEETS	SHEET NUMBER
VARIOUS	2009-071 I	VARIOUS	★ 18 + 1 = 19	1

D-91-815-09
CONTRACT 60H79

STATE OF ILLINOIS
DEPARTMENT OF TRANSPORTATION
DIVISION OF HIGHWAYS
DISTRICT ONE
PROPOSED HIGHWAY PLANS

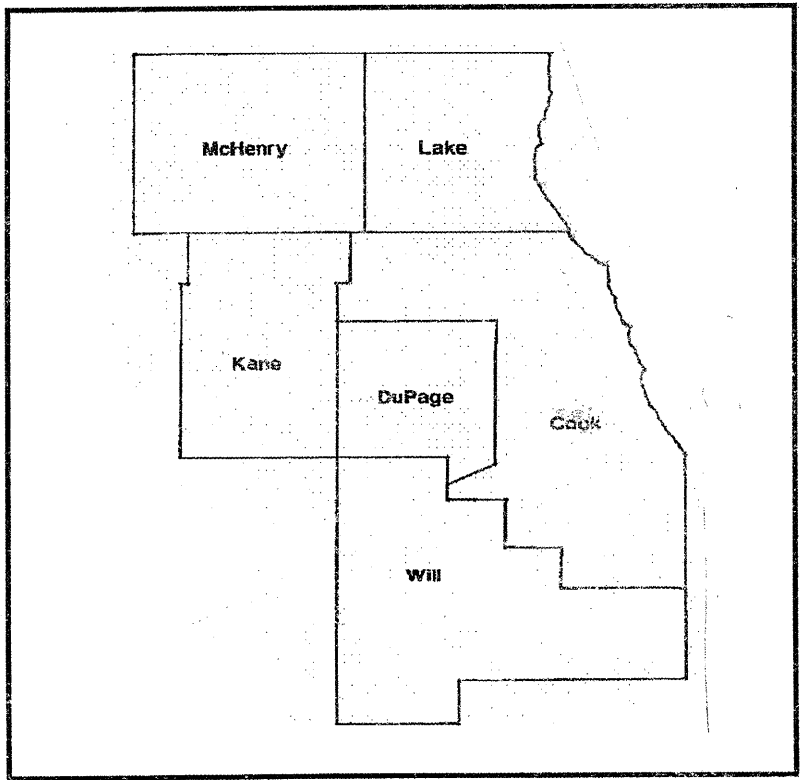
ROUTE: VARIOUS
SECTION: 2009-071 I
EXPRESSWAY LANDSCAPE REPAIR & RENOVATION
VARIOUS COUNTIES
JOB NO.: C-91-815-09



LOCATION OF IMPROVEMENT INDICATED THUS:

FOR INDEX OF SHEETS SEE PAGE 2

**IMPROVEMENT IS IN VARIOUS
LOCATIONS WITHIN DISTRICT
ONE**



DISTRICT ONE BUREAU OF MAINTENANCE: J. STUMPNER
MAINTENANCE LANDSCAPE DESIGNER: R. WANNER / M. DEL ROSARIO (847) 705-4171

CONTRACT 60H79

STATE OF ILLINOIS
DEPARTMENT OF TRANSPORTATION
DIVISION OF HIGHWAYS
SUBMITTED: AUGUST 24, 2009
Diane M. O'Keefe DEPUTY DIRECTOR OF HIGHWAYS, REGION ENGINEER
October 2, 2009
Charles J. Ingersoll ENGINEER OF DESIGN AND ENVIRONMENT
October 2, 2009
Christine M. Reed DIRECTOR OF HIGHWAYS, CHIEF ENGINEER

**PRINTED BY THE AUTHORITY
OF THE STATE OF ILLINOIS**

J.U.L.I.E.: JOINT UTILITY LOCATION
INFORMATION FOR EXCAVATION
(800) 892-0123

ROUTE	SECTION	COUNTY	TOTAL SHEETS	SHEET NUMBER
VARIOUS	2008-035 LS	VARIOUS	18	2

CONTRACT 60H79

INDEX OF SHEETS

- 1 TITLE SHEET
- 2 INDEX OF SHEETS, STATE STANDARDS AND GENERAL NOTES
- 3-4A. SUMMARY OF QUANTITIES
- 5 CALENDAR OF CONSTRUCTION
- 6 LOCATION SUMMARY
- 7-17 LAYOUT PLAN SHEETS
- 18 TC 17 TRAFFIC CONTROL DETAILS FOR FREEWAY SHOULDER CLOSURES PARTIAL RAMP CLOSURES

STATE STANDARDS

- 701001-02 701006-03
- 701101-02 701106-02
- 701901-01

GENERAL NOTES

BEFORE STARTING ANY EXCAVATION THE CONTRACTOR SHALL CALL THE STATE ELECTRICAL MAINTENANCE CONTRACTOR AT (773) 287-7600, EXTENSION 601, FOR FIELD LOCATIONS OF BURIED CABLE.

THE CONTRACTOR SHALL ADHERE TO LIMITS OF RESTORATION SHOWN. AREAS OUTSIDE THESE LIMITS THAT ARE DAMAGED OR DISTURBED BY THE CONTRACTOR, SHALL BE RESTORED AT THE CONTRACTOR'S OWN EXPENSE. NO ADDITIONAL COMPENSATION WILL BE ALLOWED.

ILLINOIS DEPARTMENT OF TRANSPORTATION

LANDSCAPE REPAIR
INDEX OF SHEETS
GENERAL NOTES
STATE STANDARDS

Rev.

ROUTE	SECTION	COUNTY	TOTAL SHEETS	SHEET NUMBER
VARIOUS	2009-071 I	VARIOUS	18	3

PAY ITEM	DESCRIPTION	UNIT	URBAN		Y003	
			TOTAL	MCHD FUND	CONTRACT MAINT FUND	
A2005032	TREE, GYMNOCLADUS DIOICUS (KENTUCKY COFFEETREE), 6' HEIGHT, CLUMP FORM, BALLED AND BURLAPPED	EACH	10		10	
21101605	TOPSOIL FURNISH AND PLACE, 2"	SQ YD	5795	1210	4585	
21101615	TOPSOIL FURNISH AND PLACE, 4"	SQ YD	7045	1210	5835	
21101625	TOPSOIL FURNISH AND PLACE, 6"	SQ YD	195		195	
21101645	TOPSOIL FURNISH AND PLACE, 12"	SQ YD	135		135	
25000210	SEEDING, CLASS 2A	ACRE	4	0.50	3.50	
25000400	NITROGEN FERTILIZER NUTRIENT	POUND	360	45	315	
25000500	PHOSPHORUS FERTILIZER NUTRIENT	POUND	360	45	315	
25000600	POTASSIUM FERTILIZER NUTREINT	POUND	360	45	315	
25000750	MOWING	ACRE	5		5	
25003321	INTERSEEDING, CLASS 5 (MODIFIED)	ACRE	2		2	
25100630	EROSION CONTROL BLANKET	SQ YD	19,360	2420	16,940	
25100900	TURF REINFORCEMENT MAT	SQ YD	50	25	25	
25200200	SUPPLEMENTAL WATERING	UNIT	25		25	
A2002816	TREE, CATALPA SPECIOSA (NORTHERN CATALPA), 2" CALIPER, BALLED AND BURLAPPED	EACH	22	3	19	
A2002916	TREE, CELTIS OCCIDENTALIS (COMMON HACKBERRY), 2" CALIPER, BALLED AND BURLAPPED	EACH	50	6	44	
A2004714	TREE, GLEDITSIA TRIACANTHOS INERMIS SHADEMASTER (SHADEMASTER THORNLESS COMMON HONEYLOCUST), 1-3/4" CALIPER, BALLED AND BURLAPPED	EACH	24	5	19	
A2005014	TREE, GYMNOCLADUS DIOICUS (KENTUCKY COFFEETREE), 1-3/4" CALIPER, BALLED AND BURLAPPED	EACH	84	5	79	
A2006514	TREE, QUERCUS BICOLOR (SWAMP WHITE OAK), 1-3/4" CALIPER, BALLED AND BURLAPPED	EACH	44	7	37	
A2006714	TREE, QUERCUS MACROCARPA (BUR OAK), 1-3/4" CALIPER, BALLED AND BURLAPPED	EACH	17	7	10	

CONTRACT 60H79

ILLINOIS DEPARTMENT OF TRANSPORTATION

SUMMARY OF QUANTITIES

ROUTE	SECTION	COUNTY	TOTAL SHEETS	SHEET NUMBER
VARIOUS	2009-071 I	VARIOUS	12	4

PAY ITEM	DESCRIPTION	UNIT	URBAN TOTAL	Y003	
				MCHD FUND	CONTRACT MAINT FUND
A2012122	TREE, AESCULUS AUTUMN SPLENDOR (AUTUMN SPLENDOR BUCKEYE), 1- 3/4" CALIPER, BALLED AND BURLAPPED, MATCHING HEADS	EACH	17	6	11
B2001664	TREE, CRATAEGUS CRUSGALLI INERMIS (THORN LESS COCKSPUR HAWTHORN), 5' HEIGHT, SHRUB FORM, BALLED AND BURLAPPED	EACH	42	3	39
B2004564	TREE, MALUS RED JEWEL (RED JEWEL CRAB APPLE), 5' HEIGHT, CLUMP FORM, BALLED AND BURLAPPED	EACH	10	3	7
B2005415	TREE, PRUNUS VIRGINIANA SCHUBERT (CANADA RED CHOKEBERRY), 5' HEIGHT, CLUMP FORM, BALLED AND BURLAPPED	EACH	15	3	12
B2006116	TREE, SYRINGA PEKINENSIS MORTON (CHINA SNOW PEKING LILAC), 2" CALIPER, TREE FORM, BALLED AND BURLAPPED	EACH	20	6	14
D2001960	EVERGREEN, PICEA GLAUCA DENSATA (BLACK HILLS SPRUCE), 5' HEIGHT, BALLED AND BURLAPPED	EACH	20	10	10
D2002160	EVERGREEN, PICEA PUNGENS (COLORADO SPRUCE), 5' HEIGHT, BALLED AND BURLAPPED	EACH	20	10	10
E20020G6	VINE-CAMPSIS RADICANS (TRUMPET VINE), 1-GALLON POT	EACH	50		50
E20210G1	VINE-PARTHENOCISSUS QUINQUEFOLIA ENGEL MANNII (ENGELMANNII VIRGINIA CREEPER), 1-GALLON POT	EACH	400		400
K0030450	PERENNIAL PLANTS, DAFFODIL BULBS	UNIT	1		1
K0036120	MULCH PLACEMENT 4"	SQ YD	1500		1500
K0039000	PERENNIAL PLANTS, SEDGE MEADOW	UNIT	1		1
K1004469	PERENNIAL PLANTS, PRAIRIE TYPE	UNIT	10		10
K1004485	PERENNIAL PLANTS, WETLAND TYPE	UNIT	1		1
X0301407	PERENNIAL PLANTS, GALLON POT	UNIT	9		9
X0322856	WEED CONTROL, NON-SELECTIVE AND NON-RESIDUAL	GALLON	5		5
X0322953	INTERSEEDING, CLASS 4 (MODIFIED)	ACRE	5		5
X0325921	PLANT CARE	SQ YD	5000		5000
X2010300	TREE REMOVAL (UNDER 6 UNITS DIAMETER)	UNIT	65		65
Z0064800	SELECTIVE CLEARING	UNIT	10		10

CONTRACT 60H79

ILLINOIS DEPARTMENT OF TRANSPORTATION

SUMMARY OF QUANTITIES

URBAN
CONTRACT
MAINT. FUNDS
Y003
TOTAL
QUANTITY

<u>PAY CODE</u>	<u>DESCRIPTION</u>	<u>UNIT</u>
C200548	Shrub, Aronia melanocarpa (Black Chokeberry), 4' Height, Balled and Burlapped	25 EACH
C2C04665	Shrub, Physocarpus opulifolius Monlo (Diabolo Common Ninebark), 24" Height, 5-Gallon Container	25 EACH
C2C06165	Shrub, Rhus copallina var. latifolia Morton (Prairie Flame Shining Sumac), 30" Height, 5-Gallon Container	25 EACH
C2C11865	Shrub, Viburnum dentatum 'Christom' (Blue Muffin Arrowwood Viburnum), 24" Height, 5-Gallon Container	25 EACH
C2000348	Shrub, Aronia arbutifolia (Red Choke Berry), 4' Height, Balled And Burlapped	25 EACH
C2C00324	Shrub, Aronia melanocarpa Iroquois Beauty (Iroquois Beauty Black Chokeberry), 2' Height, Container	25 EACH
C2002048	Shrub, Corylus americana (American Filbert), 4' Height, Balled Burlapped	25 EACH
C2003236	Shrub, Hamamelis vernalis (Vernal Witch Hazel), 3' Height, Balled and Burlapped	25 EACH
C2C05818	Shrub, Rhus aromatica Gro-Low (Gro-Low Fragrant Sumac), 18" Width, Container	25 EACH
C3005724	Shrub, Rhus aromatica (Fragrant Sumac), 2' Height, Bare Root	50 EACH
C3005924	Shrub, Rhus glabra (Smooth Sumac), 2' Height, Bare Root	50 EACH
C2006626	Shrub, Rosa Blushing Knockout (Blushing Knockout), 18" Height, Container	25 EACH
C2011134	Shrub, Syringa x persica (Persian Lilac), 2' Height, Balled And Burlapped	25 EACH
C2011848	Shrub, Viburnum dentatum Morton (Northern Burgundy Arrowwood Viburnum), 4' Height, Balled and Burlapped	25 EACH

Summary of Quantities

ROUTE VARIOUS	SECTION 2009-071 I	COUNTY VARIOUS	TOTAL SHEETS 18	SHEET NUMBER 5
-------------------------	------------------------------	--------------------------	---------------------------	--------------------------

CONTRACT 60H79

Calendar of Construction

Phases Item	Phase I		Phase II		Phase III		Phase IV		Phase V		Phase VI		Phase VII	
	December	January	February	March	April	May	June	July	August	September	October	November	December	
Plant Material														
Submit completed plant inspection forms to IDOT by Jan 31 for spring planting season & July 31 for fall planting season	█	█							█					
Seeding														
Seeding, Class 2A. Spring: March 15 - June 1 Fall: Aug 1 - Sept 15 Dormant: Nov 1 - March 15	█	█	█	█	█	█			█	█			█	█
Seeding, Class 5 (Modified) Dormant: November 1 - March 15	█	█	█	█									█	█
Seeding, Class 4A (Modified) Dormant: Nov 1 - March 15	█	█	█	█									█	█
Mowing: Mow area to be interseeded to a maximum height of 3"									█					
Weed Control, Non-Selective, Non-Residual: spray area to be interseeded									█	█	█			
Interseeding, Class 4 & 4A (Modified) Dormant: Nov 1 - March 15	█	█	█	█									█	█
Interseeding, Class 5 (Modified) Dormant: Nov 1 - March 15	█	█	█	█									█	█
Perennial Bed Preparation														
Turf Removal (Round-up or sod cutting) Round-Up: 2 weeks prior to planting						█	█			█				
Perennial Plants														
Woodland Type Plants: April 1 - May 15					█	█								
Ornamental Herbaceous, Prairie, Wetland Emergent & Sedge Meadow Plants: May 1 - June 15 or Aug 15 - Sept 15						█	█		█	█				
Bulbs: Oct 15 - Nov 30												█	█	█
Tree / Shrub / Vine Planting														
Spring plantings of balled and burlapped & container stock: March 15 - May 15				█	█	█								
Seedlings, broadleaf evergreens, vines & willow, poplar, oak, alder, birch, hawthorn, red maple, cherry & pear only in spring: March 15 - May 15				█	█	█								
Evergreens (spring): March 15 - April 30				█	█									
Fall planting of balled and burlapped: Oct 15 - Nov 30												█	█	█
Evergreens (fall): August 15 - Oct 15									█	█	█			
Plant Care														
Plant Care: April 15 - April 30 & May 15 - May 30					█	█		█	█					
Mulch Placement: May 15 - June 15								█	█					
Supplemental Watering: as determined by the RE during May 15 - Sept 15								█	█	█	█	█		

ILLINOIS DEPARTMENT OF TRANSPORTATION
CALENDAR OF CONSTRUCTION

ROUTE	SECTION	COUNTY	TOTAL SHEETS	SHEET NUMBER
VARIOUS	2009-071 I	VARIOUS	18	6

CONTRACT 60H79

LOCATION SUMMARY

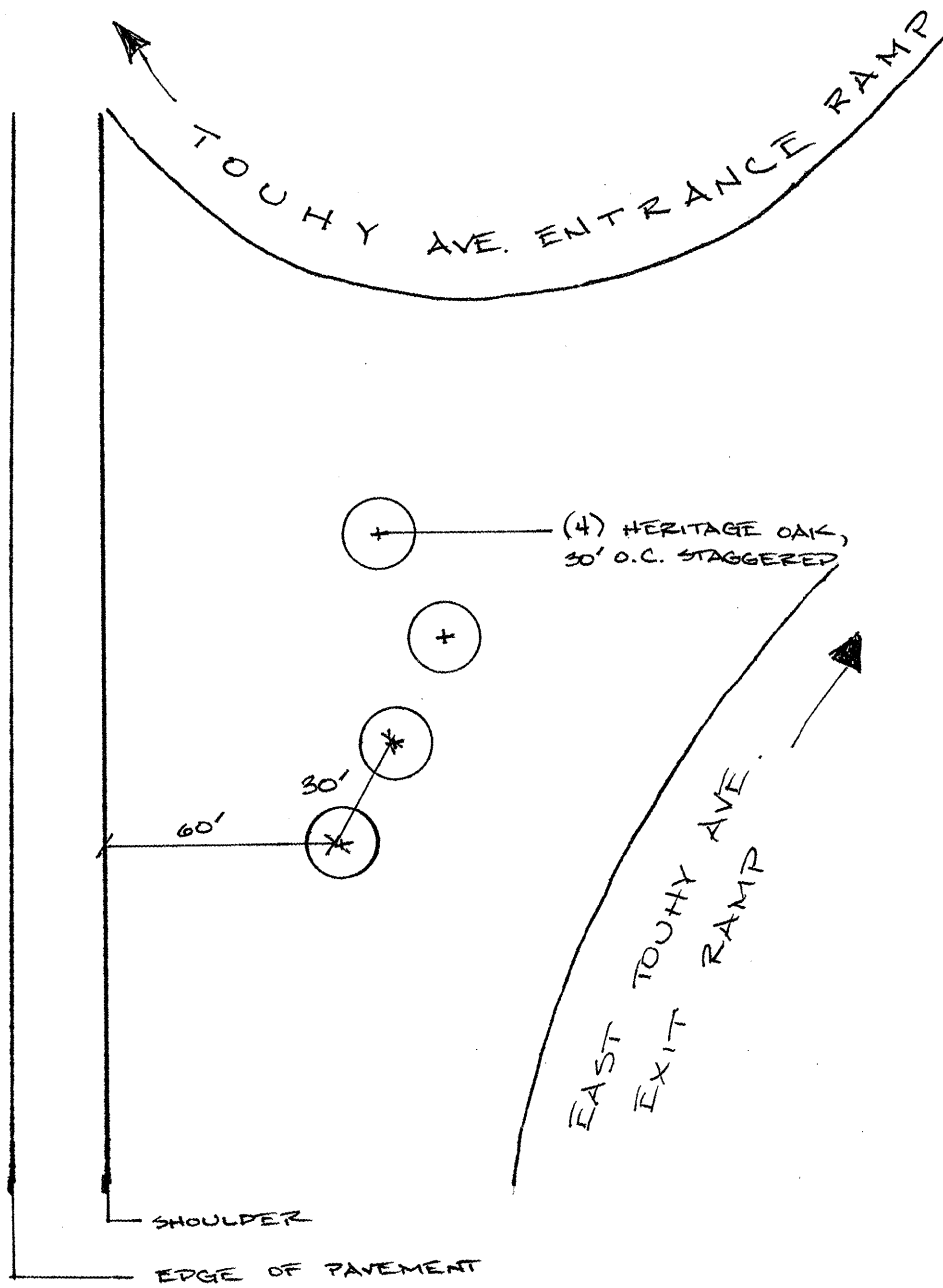
COUNTY	CITY/TOWN	CLAIM #	SHEET #	GENERAL LOCATION
COOK	LINCOLNWOOD	754254	7	I-94 WEST, EAST TOUHY AVE. EXIT RAMP
COOK	CHICAGO	N/A	8	VARIOUS LOCATIONS ON I-94, I-90, I-290, & I-55
COOK	CHICAGO	N/A	9	I-90, VARIOUS LOCATIONS
COOK	CHICAGO	N/A	10	I-290 EAST, WITHIN THE CIRCLE INTERCHANGE
COOK	CHICAGO	N/A	11	I-290 EAST & WEST, BETWEEN PAULINA ST. & CICERO AVE.
COOK	OAK PARK	N/A	12	I-290 WEST, EAST OF EAST AVE. & WEST OF RIDGELAND
COOK	CHICAGO	N/A	13-14	I-94 (DAN RYAN EXPWY) NORTHBOUND
COOK	CHICAGO	N/A	15-16	I-94 (DAN RYAN EXPWY) SOUTHBOUND
COOK	SUMMIT	749768	17	I-55 SOUTH FROM ILL 171 ENTRANCE RAMP

ILLINOIS DEPARTMENT OF TRANSPORTATION

LOCATION SUMMARY

ROUTE	SECTION	COUNTY	TOTAL SHEETS	SHEET NUMBER
VARIOUS	2009-071 I	VARIOUS	18	7

CONTRACT 60H79



LIGHT POLE
EB1
MI 40/02

I-94 WEST

GENERAL LOCATION MAP

COUNTY: COOK
CLAIM: 754254

CITY/TOWN: LINCOLNWOOD

SCHEDULE OF LANDSCAPE ITEMS

DESCRIPTION	QTY/UNIT
QUERCUS X MACDANIELLI HERITAGE OAK	4 EACH

NOT DRAWN TO SCALE

ILLINOIS DEPARTMENT OF TRANSPORTATION
LANDSCAPE REPAIR LOCATION AND
LAYOUT PLAN

ROUTE	SECTION	COUNTY	TOTAL SHEETS	SHEET NUMBER
VARIOUS	2009-071 I	VARIOUS	18	8

CONTRACT 60H79

SCHEDULE OF LANDSCAPE ITEMS
 DESCRIPTION QTY/UNIT

CELTIS OCCIDENTALIS
 HACKBERRY 20 EACH

GYMNOCLADUS DIOICUS
 KENTUCKY COFFEETREE 5 EACH

QUERCUS BICOLOR
 SWAMP WHITE OAK 10 EACH

PLANT CARE

PERENNIAL PLANTS, PRAIRIE TYPE 10 UNITS

LANDSCAPE WORK WILL BE ON THE EDENS, KENNEDY, EISENHOWER, AND STEVENSON EXPRESSWAYS (I-94, I-90, I-290, AND I-55). LOCATIONS WILL BE DETERMINED BY THE RESIDENT ENGINEER.

GENERAL LOCATION MAP

COUNTY: COOK
 CLAIM: N/A

CITY/TOWN: CHICAGO

ILLINOIS DEPARTMENT OF TRANSPORTATION

LANDSCAPE REPAIR LOCATION AND
 LAYOUT PLAN

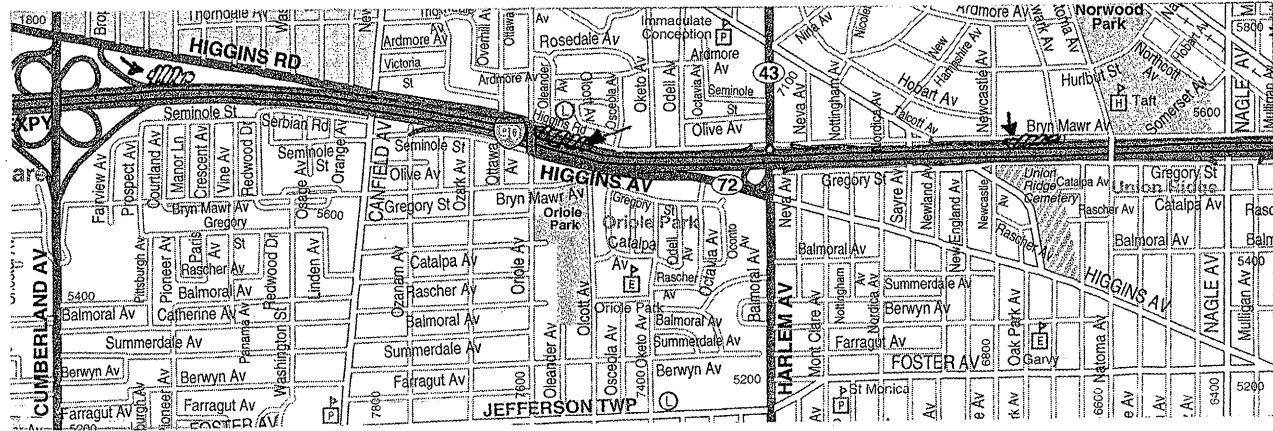
ROUTE	SECTION	COUNTY	TOTAL SHEETS	SHEET NUMBER
VARIOUS	2009-071 I	VARIOUS	18	9

CONTRACT 60H79

SCHEDULE OF LANDSCAPE ITEMS
DESCRIPTION QTY/UNIT

PLANT CARE	125 SQ YD
PLANT CARE	350 SQ YD
PLANT CARE	50 SQ YD

GENERAL LOCATION MAP



COUNTY: COOK
CLAIM: N/A

CITY/TOWN: CHICAGO

WORK AREAS ARE LOCATED ON I-90 WEST (KENNEDY EXPRESSWAY) FROM EAST OF THE EAST CUMBERLAND EXIT RAMP TO WEST OF NATOMA AVE. OVERPASS. PLANS WILL BE GIVEN BY RESIDENT ENGINEER.

ILLINOIS DEPARTMENT OF TRANSPORTATION
LANDSCAPE REPAIR LOCATION AND LAYOUT PLAN

ROUTE	SECTION	COUNTY	TOTAL SHEETS	SHEET NUMBER
VARIOUS	2009-071 I	VARIOUS	18	10

CONTRACT 60H79

SCHEDULE OF LANDSCAPE ITEMS	
DESCRIPTION	QTY/UNIT
SELECTIVE CLEARING	5 UNITS
MULCH PLACEMENT	560 SQ YD
CELTIS OCCIDENTALIS HACKBERRY	12 EACH

GENERAL LOCATION MAP

COUNTY: COOK
CLAIM: N/A

CITY/TOWN: CHICAGO

LANDSCAPE AREAS ARE LOCATED WITHIN THE CIRCLE INTERCHANGE, HEADING I-290 EAST (IB EISENHOWER) TO OUTBOUND DAN RYAN). PLANS WILL BE GIVEN BY RESIDENT ENGINEER.

ILLINOIS DEPARTMENT OF TRANSPORTATION
LANDSCAPE REPAIR LOCATION AND LAYOUT PLAN

ROUTE	SECTION	COUNTY	TOTAL SHEETS	SHEET NUMBER
VARIOUS	2009-071 I	VARIOUS	18	11

CONTRACT 60H79

SCHEDULE OF LANDSCAPE ITEMS
 DESCRIPTION QTY/UNIT

SELECTIVE CLEARING 10 UNITS

GENERAL LOCATION MAP

COUNTY: COOK CITY/TOWN: CHICAGO
 CLAIM: N/A

WORK AREA IS LOCATED ON I-290 EAST AND WEST
 (EISENHOWER EXPRESSWAY) BETWEEN PAULINA
 STREET AND CICERO AVE. PLANS WILL BE GIVEN BY
 RESIDENT ENGINEER.

ILLINOIS DEPARTMENT OF TRANSPORTATION
 LANDSCAPE REPAIR LOCATION AND
 LAYOUT PLAN

ROUTE	SECTION	COUNTY	TOTAL SHEETS	SHEET NUMBER
VARIOUS	2009-071 I	VARIOUS	18	12

CONTRACT 60H79

SCHEDULE OF LANDSCAPE ITEMS	
DESCRIPTION	QTY/UNIT
SELECTIVE CLEARING	5 UNITS
MULCH PLACEMENT	450 SQ YD
PERENNIAL PLANT CARE	30 SQ YD
PINUS NIGRA AUSTRIAN PINE	5 EACH
QUERCUS MACROCARPA BUR OAK	2 EACH

GENERAL LOCATION MAP

COUNTY: COOK
CLAIM: N/A

CITY/TOWN: OAK PARK

WORK AREA IS LOCATED BETWEEN EAST OF EAST AVENUE AND WEST OF RIDGELAND ALONG I-290 WEST. PLANS WILL BE GIVEN BY RESIDENT ENGINEER.

ILLINOIS DEPARTMENT OF TRANSPORTATION
LANDSCAPE REPAIR LOCATION AND LAYOUT PLAN

ROUTE	SECTION	COUNTY	TOTAL SHEETS	SHEET NUMBER
VARIOUS	2009-071 I	VARIOUS	18	13

CONTRACT 60H79

Sheet	Virginia Creeper	Trumpet Vine - Orange	Happy Returns Daylily	Seeding, Class 2A	2" Topsoil	4" Topsoil	6" Topsoil	12" topsoil	Nutrients	Erosion Control Blanket	Modified Seeding	Trees	type of tree	Shrubs	type of shrub	Round-up	Location
12	0	0	0	0	0	0	0	0	0	0	0	3	3 - Clump Form	0			w/o MLK Drive - will be layed out with flags
16	0	0	0	0	0	0	0	0	0	0	0	3	3 - Kentucky Coffeetree	0			I-57/Bishop Ford interchange area
	0	0	0	0	0	0	0	0	0	0	0	4	4 - Kentucky Coffeetree	0			I-57/Bishop Ford interchange area
	0	0	0	0	0	0	0	0	0	0	0	18	18 - Kentucky Coffeetree	0			I-57/Bishop Ford interchange area
	0	0	0	0	0	0	0	0	0	0	0	6	6 - Kentucky Coffeetree	0			I-57/Bishop Ford interchange area
18	0	0	0	0.03	0	133	0	0	2.7	133	0	0		0			NB I-94, begin w/o MLK Drive and continue west toward Michigan Ave
19	45	1	0	0.08	349	0	0	0	7.2	349	0	0		0			continue westbound, end e/o Michigan Ave
20	0	0	0	0	0	0	0	0	0	0	0	33	18 Hackberry & 15 - Kentucky Coffeetree	0			between w/o Michigan Ave to e/o State St
22	0	0	0	0.05	0	223	0	0	4.5	223	0	20	8 - hawthorn & 12 - Kentucky Coffeetree	0			continue westbound towards 95th St
25	0	0	0	0.05	225	0	0	0	4.5	225	0	0		0			area between pedestrian bridge and s/o 91st St
26	0	0	0	0.004	17	0	0	0	0.36	17	0	13	10 - Catalpa & 3 - Red Jewel Crabapple	0		yes	area between rail road bridge and 87th St Accident Investigation Site (AIS)
27	0	0	0	0.02	0	95	0	0	1.8	95	0	0		0			n/o AIS along back of curb
29	0	0	0	0.006	0	27	0	0	0.54	27	0	0		0			n/o 87th St Gateway area (about 50' n/o sign truss)
	0	0	0	0.034	120	0	16	0	3.06	138	0	0		0			along 87th St entrance ramp (along back of curb)
30	0	0	0	0.08	0	317	175	0	7.2	392	0	0		0			along 87th St entrance ramp going towards 83rd St (along back of curb to guardrail)
31	0	0	0	0.2	515	360	0	0	18	875	0.2	0		0		0.2	area n/o 83rd St
32	9	2	760	0.15	0	0	0	0	13.5	712	0	0		0		0.15	on/off ramp bewtween 83rd St and 79th St
33	0	0	0	0.1	10	445	0	0	9	455	0	0		0			area south of 79th St Gateway (along back of curb)
34,35	0	0	0	0.07	0	0	0	2	6.3	280	0	0		0		0.07	on/off ramp bewtween 79th St and 76th St
35	0	0	0	0.04	0	7	0	0	3.6	164	0	0		0			gore at 76th St ramp, s/o 76th St bridge, n/o 76th St bridge
36	0	0	0	0	0	0	0	0	0	0	0.1	0		0		0.1	n/o 75th st, around HMLT
37	0	0	0	0.1	0	0	0	0	9	350	0	0		0		0.1	area from 75th St entrance ramp to AIS
38	0	0	0	0.08	0	151	0	0	7.2	310	0	0		0		0.03	n/o AIS
	0	0	0	0.002	0	0	3	0	0.18	7	0	0		0			area s/o guardrail on way to 71st St
39	0	0	0	0.1	176	0	0	0	9	410	0	0		0		0.05	area s/o 71st St (along back of curb)

LOCATION: I-94 (DAN RYAN EXPWY) ALONG NB DAN RYAN FROM 31ST TO I-57 AT ILL 1 (HALSTED ST) TO MLK DRIVE
 SPREADSHEET REFERENCES PLAN SHEETS WHICH WILL BE GIVEN TO THE CONTRACTOR BY THE ENGINEER.

ILLINOIS DEPARTMENT OF TRANSPORTATION
 LANDSCAPE REPAIR LOCATION AND LAYOUT PLAN

ROUTE	SECTION	COUNTY	TOTAL SHEETS	SHEET NUMBER
VARIOUS	2009-071 I	VARIOUS	18	14

CONTRACT 60H79

Sheet	Virginia Creeper	Trumpet Vine - Orange	Happy Returns Daylily	Seeding, Class 2A	2" Topsoil	4" Topsoil	6" Topsoil	12" topsoil	Nutrients	Erosion Control Blanket	Modified Seeding	Trees	type of tree	Shrubs	type of shrub	Round-up	Location
40,41	0	0	0	0.15	0	0	0	0	13.5	684	0	8	8 - Kentucky Coffeetree	0		0.15	area n/o 69th St
45	0	1	0	0	0	0	0	0	0	0	0	0		0			63rd St bridge abutment - n/o
46	0	5	0	0	0	0	0	0	0	0	0	0		0			n/o RR located n/o 63rd St
47	0	0	0	0.006	0	0	0	0	0.54	28	0	0		0			59th St exit ramp
48	0	0	0	0	0	0	0	0	0	0	0	0		70	70 - Iroquois black chokeberry (3' oc)		s/o 59th St
54	0	0	0	0.01	0	56	0	0	0.9	56	0	0		0			along 47th exit ramp (n/o sign truss)
55	0	0	0	0.03	0	23	0	0	2.7	83	0	28	7 - Hawthorn & 12 - Shademaster Honeylocust & 9 - Shubert Red Chokecherry	0			s/o 47th St Gateway
56	0	0	0	0.02	0	0	0	0	1.8	41	0.5	0		0		0.5	s/o 47th St Gateway
58,59	0	0	0	0.05	0	0	0	0	4.5	134	0	0		0			s/o 43rd St (area 1: Station 4551 + 75 to 4552 + 00) / area 2: along back of guardrail)
59,60	0	3	0	0	0	0	0	0	0	0	0	0		0			along Root St entrance
60	0	0	0	0.03	0	0	0	4	2.7	149	0.13	0		0		0.2	n/o Root St
61	0	0	0	0	0	0	0	0	0	0	0	3	3 - Hawthorns	0			s/o RR (station 4573+00 to 4573+50)
	0	0	0	0.05	0	0	0	0	4.5	175	0.05	0		0		0.2	area s/o Pershing Rd
62	0	0	0	0.001	0	0	0	0	0.09	6	0	0		0			gore tip (station 4586+65)
64	0	0	0	0.001	0	0	0	0	0.09	5	0	0		0			beginning of guardrail (s/o 35th St)
65	0	0	0	0.006	0	0	0	0	0.54	27	0	0		0			gore tip (4616+00)
TOTAL	54	12	760	1.55	1412	1837	194	6	139.5	6550	0.98	139		70		1.75	

LOCATION: I-94 (DAN RYAN EXPWY) ALONG NB DAN RYAN FROM 31ST TO I-57 AT ILL 1 (HALSTED ST) TO MLK DRIVE
 SPREADSHEET REFERENCES PLAN SHEETS WHICH WILL BE GIVEN TO THE CONTRACTOR BY THE ENGINEER.

ILLINOIS DEPARTMENT OF TRANSPORTATION
 LANDSCAPE REPAIR LOCATION AND LAYOUT PLAN

ROUTE	SECTION	COUNTY	TOTAL SHEETS	SHEET NUMBER
VARIOUS	2009-071 I	VARIOUS	18	15

CONTRACT 60H79

Sheet	Virginia Creeper	Trumpet Vine - Orange	Stella d' Oro Daylily	Turf Restoration	2" Topsoil	4" Topsoil	6" Topsoil	12" Topsoil	Nutrients	Erosion Control Blanket	Modified Seeding	Round-up	Trees	type of tree	Shrubs	type of shrub	Selective Clearing	Location
1	25	2	0	0	0	0	0	0	0	0	0	0	0		0		0	Halsted St bridge abutment - n/o
2	0	0	0	0.05	0	199	0	0	4.5	199	0	0.35	0		0		0	along Hasted St off ramp
	25	1	0	0	0	0	0	0	0	0	0	0	0		0		0	Parnell Ave bridge abutment - n/o
	0	0	0	0	0	0	0	0	0	0	0	0	0		200	200 - Fragrant Sumac (3' oc)	0	along Halsted St off ramp (Station 101+75 to 103+75)
	0	0	0	0	0	0	0	0	0	0	0	0	0		0		180	Parnell Ave bridge abutment - s/o
3	20	1	0	0	0	0	0	0	0	0	0	0	0		0		0	Parnell Ave bridge abutment - n/o
	0	0	0	0.03	54	58	0	0	2.7	114	0	0	0		0		0	area between Parnell Ave and RR
3,4	0	0	0	0	0	0	0	0	0	0	0	0	0		150	150 - Fragrant Sumac (3' oc)	1350	n/o C & WI RR (on slope; to copy exactly what is on the other side of the expressway)
4	0	0	0	0.04	0	27	0	0	3.6	162	0	0.04	0		0		0	area between C & WI RR and Wentworth
5	0	2	0	0	0	0	0	0	0	0	0	0	0		0		0	Wentworth Ave bridge abutment - s/o
	0	2	0	0	0	0	0	0	0	0	0	0	0		0		0	Wentworth Ave bridge abutment - n/o
	0	0	0	0.02	34	23	0	0	1.8	57	0	0	0		0		0	area n/o Wentworth Ave (behind guardrail)
8	0	0	0	0	0	0	0	0	0	0	0	0	19	10 - swamp white oak / 9 - hawthorn	0		0	n/o 95th St Gateway
9	0	0	0	0.2	712	145	0	0	18	857	0	0.02	0		0		0	(1) gore area at 95th St exit ramp; (2) s/o truss sign; (3) between both truss signs (behind back of curb)
10	0	0	0	0.05	0	0	0	65	4.5	199	0	0	0		0		0	n/o sign truss (station 1227 + 50 to 1228 + 25)
	36	0	0	0	0	0	0	0	0	0	0	0	0		0		0	s/o 91st St (continue existing vine bed along bridge abutment)
	0	0	0	0	0	0	0	0	0	0	0	0	0		0		10	n/o 91st St (along base of retaining wall)
	0	0	0	0.01	0	39	0	0	0.9	50	0	0	0		0		0	area is between 91st St and CRI & P RR (Station: 1235+25)
11	30	0	0	0	0	0	0	0	0	0	0	0	0		0		0	CRI & P RR bridge abutment - s/o
	40	0	0	0	0	0	0	0	0	0	0	0	0		0		0	CRI & P RR bridge abutment - n/o
	40	0	0	0	0	0	0	0	0	0	0	0	0		0		0	C & WI RR bridge abutment - s/o
	38	2	0	0.03	0	145	0	0	2.7	145	0	0	0		0		0	BELT RR bridge abutment - n/o; seeding is in front of sign
12	130	0	0	0	0	0	0	0	0	0	0	0	0		0		0	interplant within existing bed along 87th St entrance ramp
	0	0	0	0.16	0	750	0	0	14.4	750	0	0.16	0		0		0	area along 87th St entrance ramp
	7	0	22	0	0	0	0	5	0	0	0	0	0		0		0	interplant vines w/in existing vine bed/ 326 daylilies (new bed - to continue existing bed)/remaing 44 daylilies interplanted w/in existing bed
	0	0	0	0	0	0	0	0	0	0	0	0	3	3 - hawthorn	0		0	near Station 1255 +00 (will be flagged out)
	0	0	0	0.05	0	154	0	0	4.5	203	0	0	0		0		0	within Station 1251 + 00 and 1255 +00 (s/o 87th St)
13	0	0	0	0.07	89	219	0	0	6.3	308	0	0	0		0		0	s/o 87th St to HMLT
	0	0	0	0	0	0	0	0	0	0	0	0	0		0		20	87th St bridge abutment - s/o
	0	0	0	0.02	0	52	0	0	1.8	94	0	0	0		0		0	n/o 87th St (along back of guardrail)
14	0	0	0	0	220	0	0	0	0	0	0	0	0		0		0	interplant vines w/in existing vine bed place soil within vine bed
15	0	0	0	0.03	0	0	0	0	2.7	113	0	0	0		0		0	s/o 83rd St, in front of HMLT
17	0	0	0	0.2	0	0	0	0	18	890	0	0.2	0		0		0	area between 79th St entrance ramp and 83rd St exit ramp

LOCATION: I-94 (DAN RYAN EXPWY) ALONG SB DAN RYAN FROM 31ST TO I-57 AT ILL 1 (HALSTED ST) TO MLK DRIVE
 SPREADSHEET REFERENCES PLAN SHEETS WHICH WILL BE GIVEN TO THE CONTRACTOR BY THE ENGINEER.

ILLINOIS DEPARTMENT OF TRANSPORTATION
 LANDSCAPE REPAIR LOCATION AND LAYOUT PLAN

ROUTE	SECTION	COUNTY	TOTAL SHEETS	SHEET NUMBER
VARIOUS	2009-071 I	VARIOUS	18	16

CONTRACT 60H79

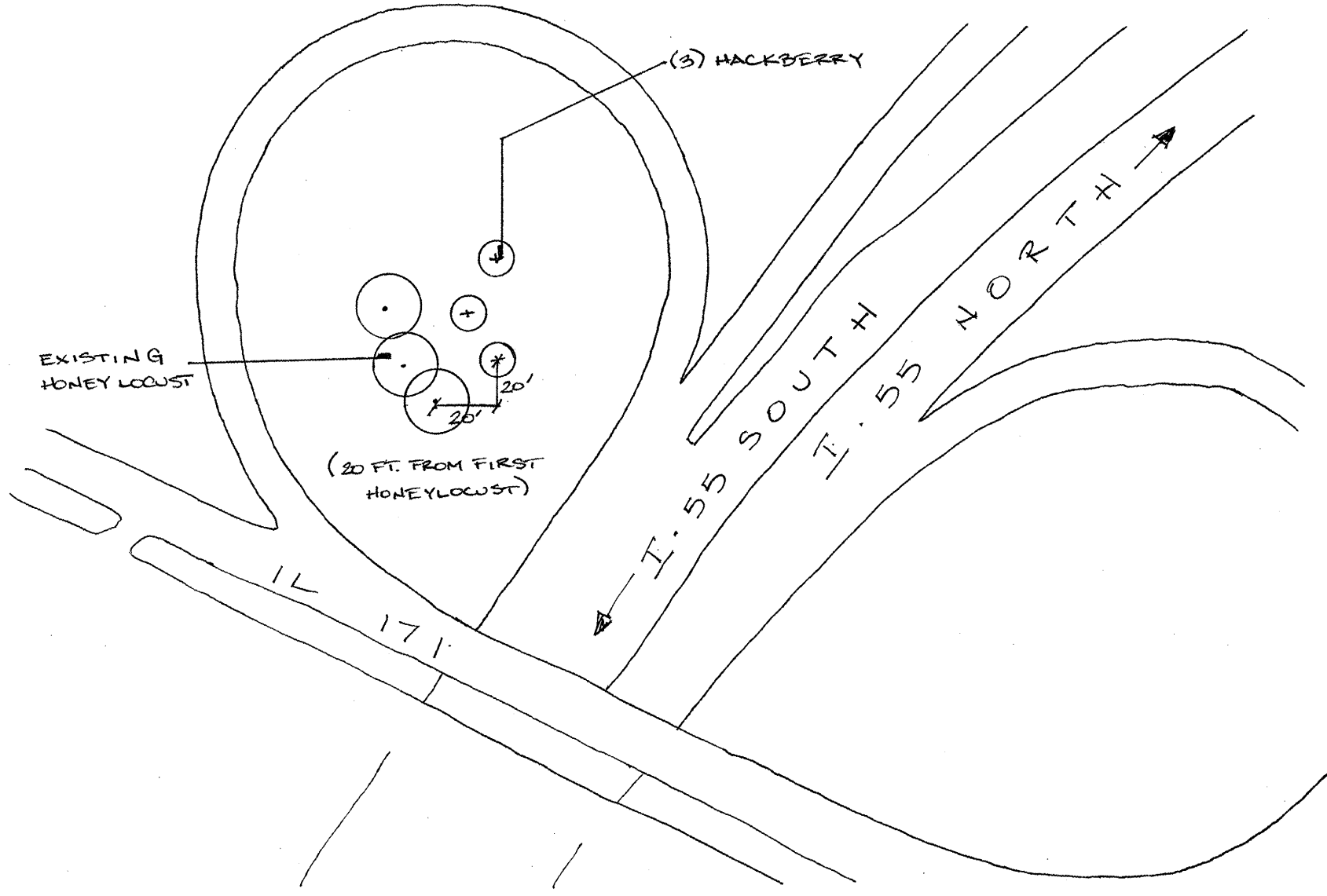
Sheet	Virginia Creeper	Trumpet Vine - Orange	Stella d' Oro Daylily	Turf Restoration	2" Topsoil	4" Topsoil	6" Topsoil	12" Topsoil	Nutrients	Erosion Control Blanket	Modified Seeding	Round-up	Trees	type of tree	Shrubs	type of shrub	Selective Clearing	Location
18	0	0	0	0.08	368	0	0	0	7.2	368	0	0	0		0		0	area s/o 79th St
19	0	0	0	0.023	0	108	0	0	2.07	108	0	0.023	0		0		0	along 79th St exit ramp
20	0	0	0	0.002	0	0	0	8	0.18	8	0	0	0		0		0	along 76th St entrance ramp (vines and daylilies interplanted w/in existing bed; turf restoration just s/o between 76th St and 75th St
	0	0	0	0.011	54	0	0	0	0.99	54	0	0	0		0		0	
22	0	0	0	0	0	0	0	0	0	0	0	0	0		17	17 - miss kim manchurian lilac	0	around HMLT near AIS
24	0	0	0	0.12	0	445	0	0	10.8	535	0	0	0		0		0	area n/o 75th St
	0	0	0	0.1	0	250	0	0	9	469	0	0	0		0		0	area s/o 67th St
26,27	0	0	0	0.12	0	62	0	0	10.8	552	0	0	0		0		0	install vines at north end of existing bed; install daylilies in front of vine bed; seeding behind back of area s/o CRI & P RR
28,29	0	0	0	0.08	0	309	0	0	7.2	309	0	0	0		0		0	
30	0	0	0	0.02	37	0	0	0	1.8	37	0	0	0		0		0	area s/o 63rd St
31	0	0	0	0.01	0	23	0	0	0.9	46	0	0.01	0		0		0	area just s/o CRI & P RR
	0	0	0	0.08	0	368	0	0	7.2	368	0	0	0		0		0	area just n/o CRI & P RR
	0	0	0	0.04	192	0	0	0	3.6	58	0	0	0		0		0	area surrounding HMLT @ station 3431 + 50
	0	0	0	0.04	184	0	0	0	3.6	184	0	0	0		0		0	area surrounding sign truss @ station 3434 + 50
32	0	0	0	0.05	187	0	0	0	4.5	212	0	0.04	0		0		0	area s/o CTA Green Line
	0	0	0	0.001	0	0	0	0	0.09	5	0	0	0		23	23 - Gro Low Sumac	25	area between CTA Green Line and s/o 59th St
	0	0	0	0.07	335	0	0	0	6.3	335	0	0	0		0		0	n/o 59th St (n/o HMLT)
38	0	0	0	0	0	0	0	0	0	0	0	0	0		0		0	51st St bridge abutment - s/o
	0	0	0	0	0	0	0	0	0	0	0	0	5	4 - Swamp White Oak & 1 - Red Jewel Crabapple	0		0	s/o HMLT (station: 3511 + 50 to 3512 + 25)
40,41	0	0	0	0.02	43	0	0	0	1.8	43	0	0	0		0		0	area s/o 47th St
42	0	0	0	0	0	0	0	0	0	334	0.07	0.07	0		0		0	vines & daylilies interplanted w/in existing vine/daylily bed; extend existing seeded area near 45th St
44	0	0	0	0.03	28	0	0	0	2.7	101	0	0	0		0		0	area n/o 43rd St
	0	0	0	0	0	0	0	0	0	0	0	0	3	3 - Swamp White Oak	0		0	s/o 42nd St bridge abutment
45	0	0	0	0.003	0	0	0	9	0.27	9	0	0	0		0		0	between Root St and CRI & P RR (Station: 3572 + 00)
46	0	0	0	0.04	0	0	0	0	3.6	167	0	0	0		0		0	along Pershing Rd entrance ramp
	0	0	0	0.01	0	0	0	0	0.9	34	0.01	0.01	0		0		0	s/o Pershing Rd
	0	0	0	0.007	32	0	0	0	0.63	32	0.05	0.05	5	5 - Catalpa	0		0	n/o Pershing Rd
47	0	0	0	0.004	0	17	0	0	0.36	17	0	0	14	7 - Clump Form Kentucky Coffeetree & 7 China Snow Peking Lilac	0		0	s/o 37th St
50	0	0	0	0.0002	0	0	0	1	0.018	1	0	0	0		0		0	s/o 33rd St - interplant vines w/in existing vine bed; turf restoration (Stat: 3616+50)
TOTAL	391	10	22	1.9212	2569	3393	0	88	172.908	8527	0.13	0.973	49		390		1585	

LOCATION: I-94 (DAN RYAN EXPWY) ALONG SB DAN RYAN FROM 31ST TO I-57 AT ILL 1 (HALSTED ST) TO MLK DRIVE
SPREADSHEET REFERENCES PLAN SHEETS WHICH WILL BE GIVEN TO THE CONTRACTOR BY THE ENGINEER.

ILLINOIS DEPARTMENT OF TRANSPORTATION
LANDSCAPE REPAIR LOCATION AND LAYOUT PLAN

ROUTE	SECTION	COUNTY	TOTAL SHEETS	SHEET NUMBER
VARIOUS	2009-071 I	VARIOUS	18	17

CONTRACT 60H79



NOT DRAWN TO SCALE

GENERAL LOCATION MAP

COUNTY: COOK
CLAIM: 749768

CITY/TOWN: SUMMIT

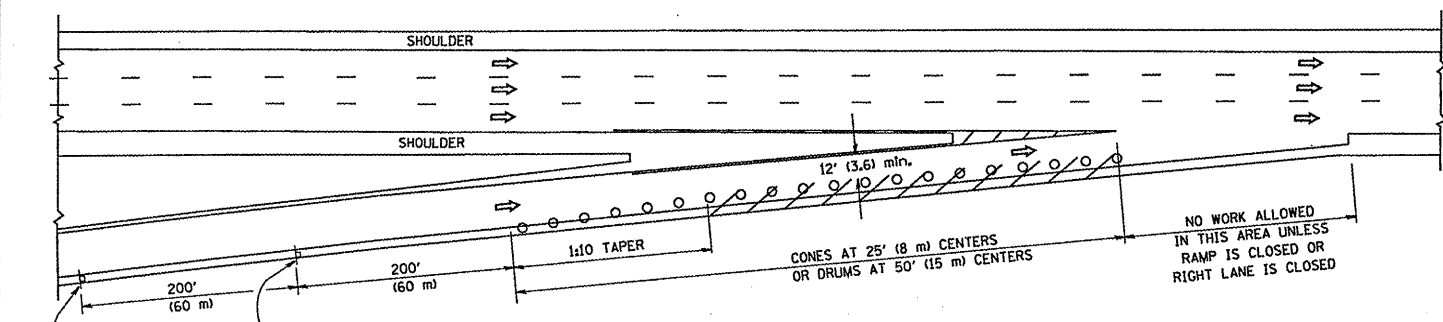
SCHEDULE OF LANDSCAPE ITEMS

DESCRIPTION	QTY/UNIT
CELTIS OCCIDENTALIS	
HACKBERRY	3 EACH

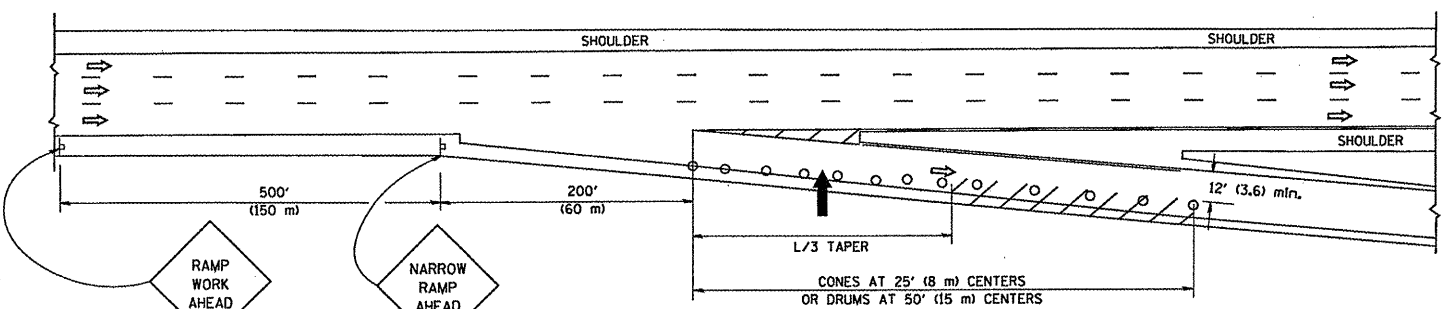
ILLINOIS DEPARTMENT OF TRANSPORTATION

LANDSCAPE REPAIR LOCATION AND LAYOUT PLAN

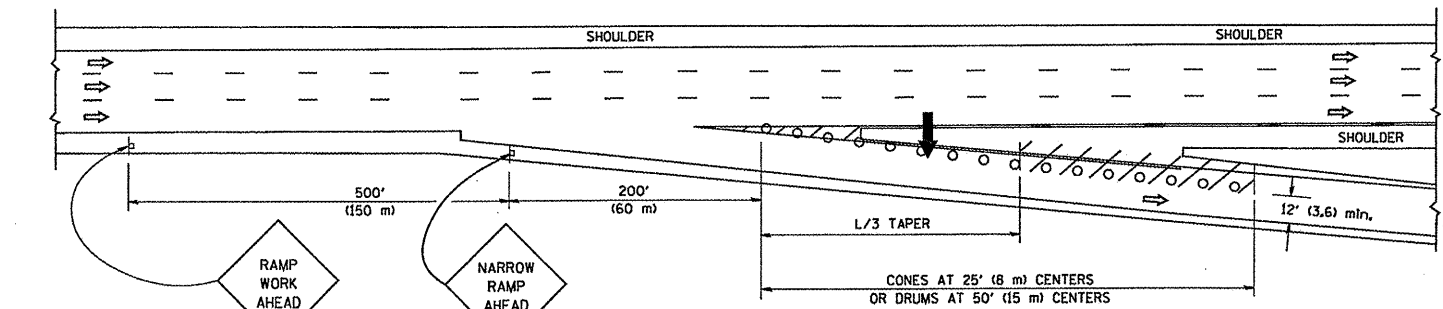
PARTIAL RAMP CLOSURE DETAILS



TYPICAL ENTRANCE RAMP



TYPICAL EXIT RAMP



TYPICAL EXIT RAMP

SYMBOLS

- ARROWBOARD
- WORK AREA
- SIGN ON PORTABLE OR PERMANENT SUPPORT
- FLAGGER WITH CONTROL SIGN
- TYPE II BARRICADE, DRUM OR VERTICAL BARRICADE WITH STEADY BURN MONO-DIRECTIONAL LIGHT
- CONE, DRUM OR BARRICADE

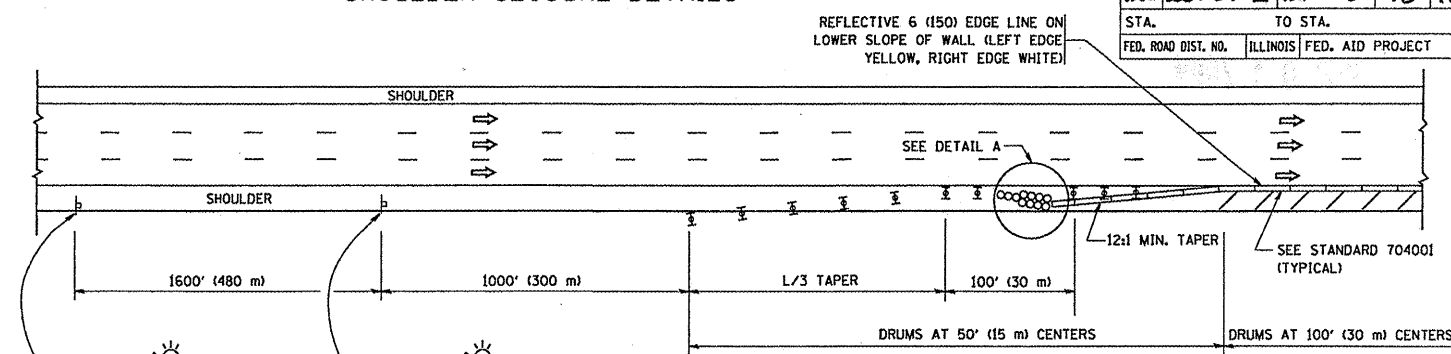
GENERAL NOTES

1. THE "L" DISTANCE EQUALS:

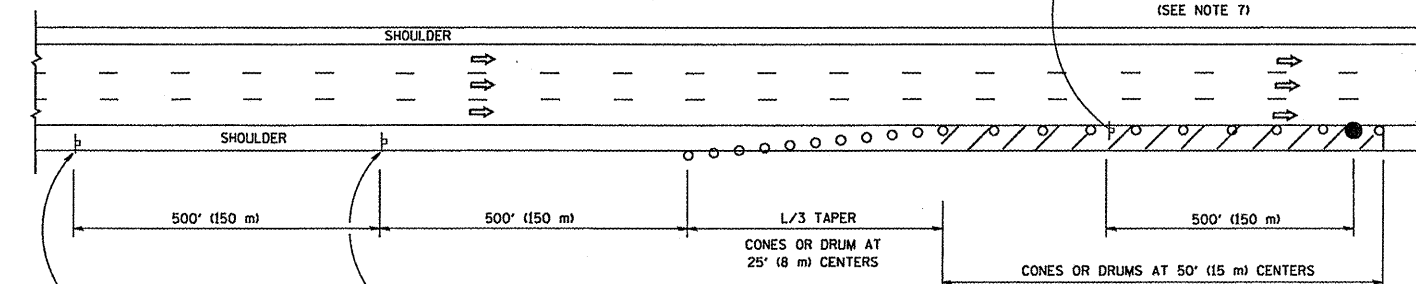
SPEED LIMIT	FORMULAS
45 mph (80 km/h) OR GREATER:	METRIC: $L=0.65(W)(S)$ ENGLISH: $L=(W)(S)$
	W = WIDTH OF OFFSET IN FEET (METERS)
	S = NORMAL POSTED SPEED MPH (KM/H)
2. PLASTIC DRUMS WITH HIGH PERFORMANCE REFLECTIVE SHEETING AND STEADY BURNING LIGHTS ARE REQUIRED FOR ALL NIGHTTIME CLOSURES.
3. ALL SIGNS SHALL BE POST MOUNTED IF THE CLOSURE TIME EXCEEDS FOUR DAYS.
4. FLASHING LIGHTS SHALL BE USED DURING THE HOURS OF DARKNESS AND SHALL BE INSTALLED ABOVE THE FIRST TWO SETS OF SIGNS.

SHOULDER CLOSURE DETAILS

F.A.P. R.T.E.	SECTION	COUNTY	TOTAL SHEETS	SHEET NO.
JAF 2009-071	I	VARIOUS	18	18
STA.	TO STA.			
FED. ROAD DIST. NO.	ILLINOIS FED. AID PROJECT			

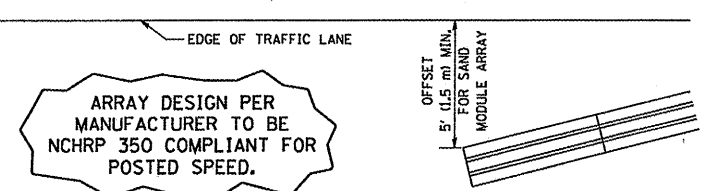


PERMANENT SHOULDER CLOSURE



DAYTIME SHOULDER CLOSURE

THIS DETAIL IS USED WHERE:
 1. VEHICLES, EQUIPMENT, WORKERS OR THEIR ACTIVITIES ENCR OACH IN AN AREA CLOSER THAN 15' (4.5 m) TO THE EDGE OF PAVEMENT FOR A PERIOD IN EXCESS OF 15 MINUTES.



DETAIL "A"
 IMPACT ATTENUATOR, TEMPORARY
 (SEE NOTE 5)

ALL DIMENSIONS ARE IN INCHES (MILLIMETERS) UNLESS OTHERWISE SHOWN.

REVISIONS	
NAME	DATE
DWS	11/96
JAF	12/02
NCHRP 350	04/03
JAF	2/06
SPB	1/07

ILLINOIS DEPARTMENT OF TRANSPORTATION
**TRAFFIC CONTROL DETAILS
 FOR FREEWAY
 SHOULDER CLOSURES
 PARTIAL RAMP CLOSURES**
 DESIGNED BY: DWS
 DRAWN BY:
 CHECKED BY:
 TC-17