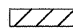

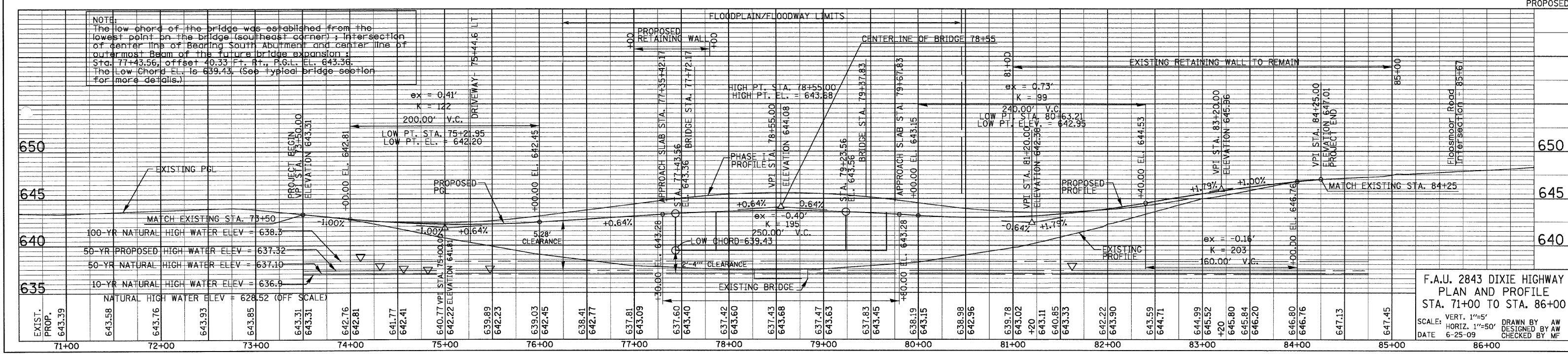
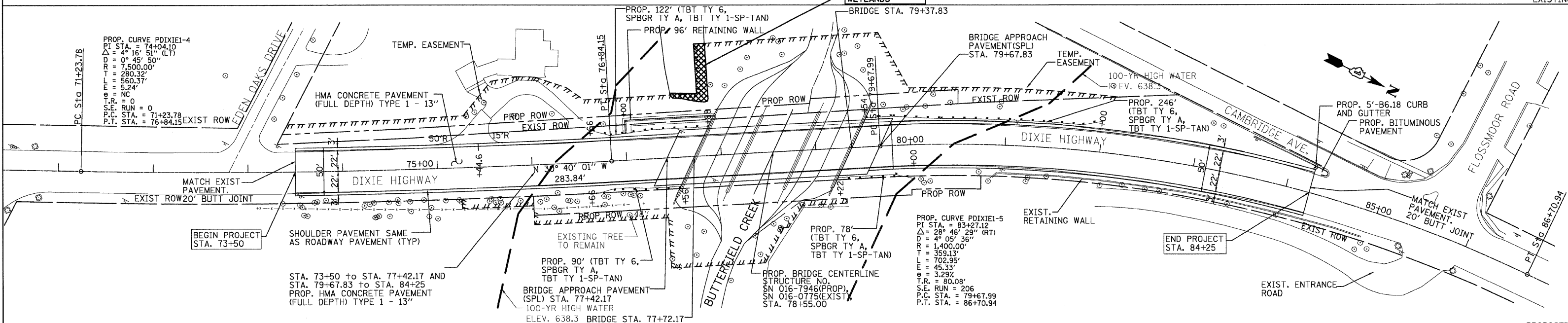
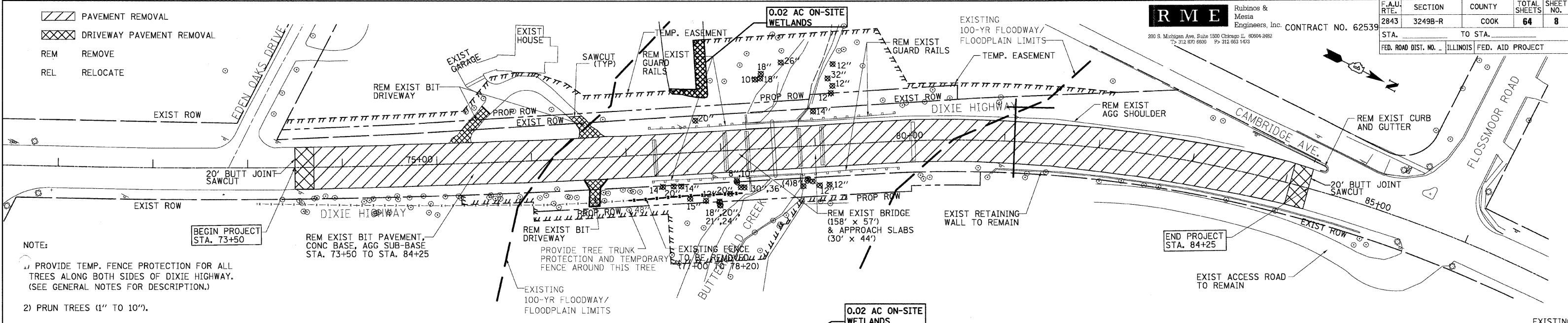


-  PAVEMENT REMOVAL
-  DRIVEWAY PAVEMENT REMOVAL
- REM REMOVE
- REL RELOCATE

NOTE:
 1) PROVIDE TEMP. FENCE PROTECTION FOR ALL TREES ALONG BOTH SIDES OF DIXIE HIGHWAY. (SEE GENERAL NOTES FOR DESCRIPTION.)
 2) PRUN TREES (1" TO 10").



F.A.U. 2843 DIXIE HIGHWAY
 PLAN AND PROFILE
 STA. 71+00 TO STA. 86+00
 SCALE: VERT. 1"=5'
 HORIZ. 1"=50'
 DATE 6-25-09
 DRAWN BY AW
 DESIGNED BY AW
 CHECKED BY MF