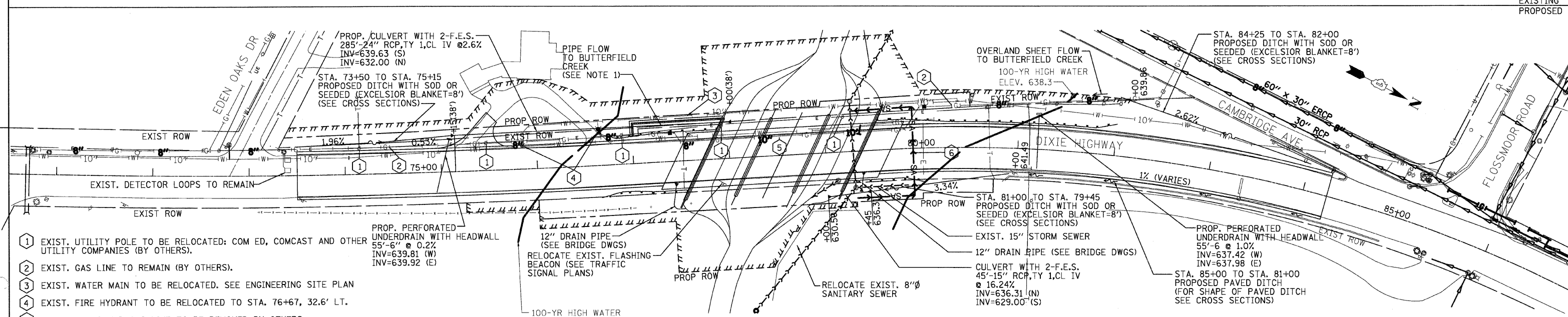
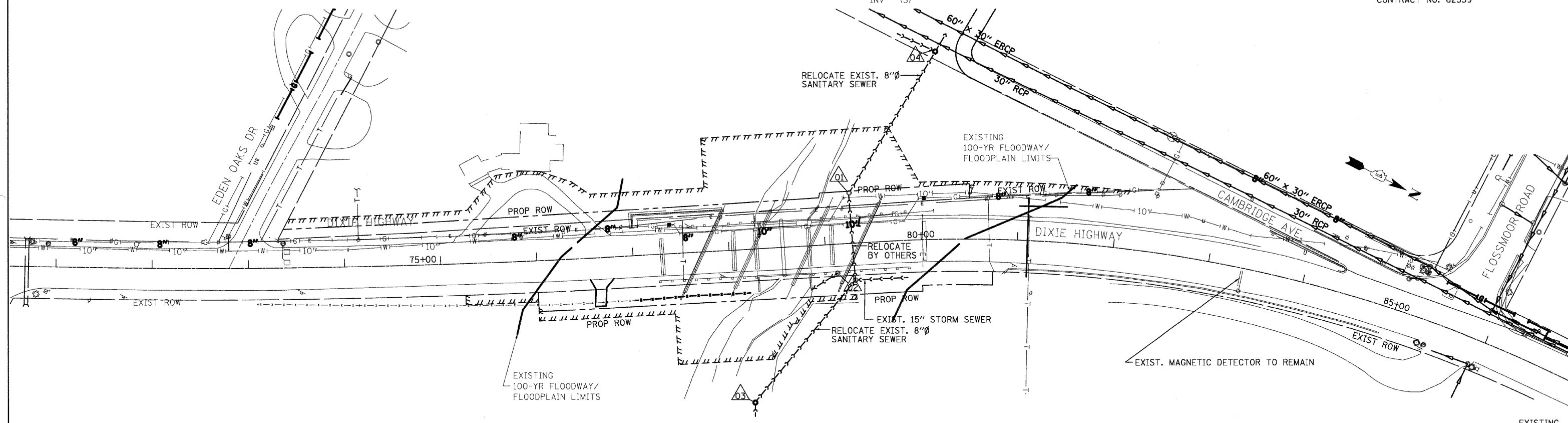


EXIST. SANITARY MH-1
(TO BE REMOVED BY OTHERS)
RIM 634.89
INV 628.98(E) 10", INV 626.69(W) 10"
(8" ABS SEWER WITH 18" STEEL CASING PIPE
BETWEEN MH-1 & MH-2 PER VILLAGE ATLAS)

EXIST. SANITARY MH-2
(TO BE REMOVED BY OTHERS)
RIM 636.36
INV 631.74(E) 15"
INV 631.79(W) 15"

(LOCATED BY ATLAS, NOT SURVEY)
EXIST. SANITARY MH-3
(TO REMAIN)
RIM 634.9+
INV - (E), INV - (W)

(LOCATED BY ATLAS, NOT SURVEY)
EXIST. SANITARY MH-4
(TO REMAIN)
RIM -
INV - (E)
INV - (W)
INV - (S)



- 1 EXIST. UTILITY POLE TO BE RELOCATED: COM ED, COMCAST AND OTHER UTILITY COMPANIES (BY OTHERS).
- 2 EXIST. GAS LINE TO REMAIN (BY OTHERS).
- 3 EXIST. WATER MAIN TO BE RELOCATED. SEE ENGINEERING SITE PLAN
- 4 EXIST. FIRE HYDRANT TO BE RELOCATED TO STA. 76+67, 32.6' LT.
- 5 EXIST. ABANDONED GAS LINE TO BE REMOVED BY OTHERS.
- 6 EXIST. SANITARY SEWER TO BE RELOCATED. SEE ENGINEERING SITE PLAN

NOTE
1. THE 24" RCP PIPE WILL REQUIRE AN 18" CLEAR DISTANCE TO THE PILES UNDER ABUTMENT. CONTRACTOR TO COORDINATE THIS EFFORT. (SEE BRIDGE DRAWINGS)
2. ALL TREE REMOVAL SHALL BE DONE BEFORE UTILITY POLE RELOCATION.

○ POLE LOCATIONS SHOWN PER COMED PERMIT DRAWING.

REVISIONS	
NAME	DATE

ILLINOIS DEPARTMENT OF TRANSPORTATION
F.A.U. 2843 DIXIE HIGHWAY
OVER BUTTERFIELD CREEK
DRAINAGE AND UTILITIES

RME Rubinos & Mesia Engineers, Inc.
200 S. Michigan Ave. Suite 1500 Chicago IL 60604-2482
T-312 870 6600 F-312 663 1473

SCALE: VERT. 1"=50'
HORIZ. 1"=50'
DATE 6-25-09
DRAWN BY AW
DESIGNED BY AW
CHECKED BY MF