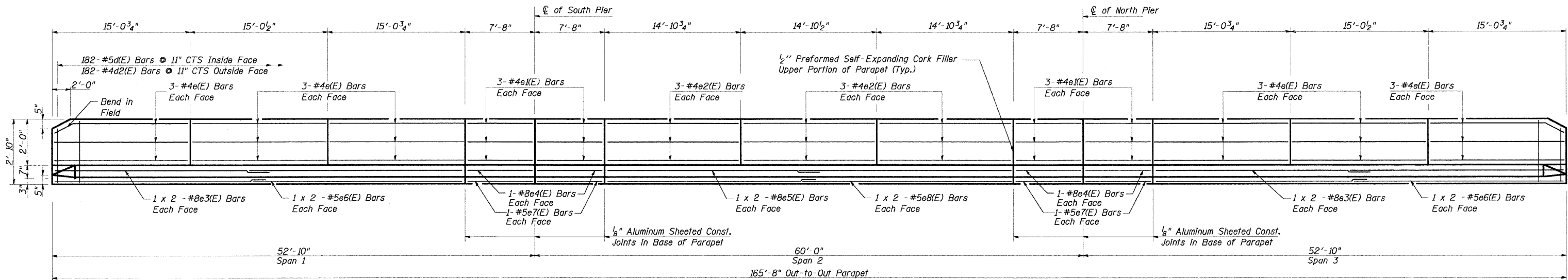
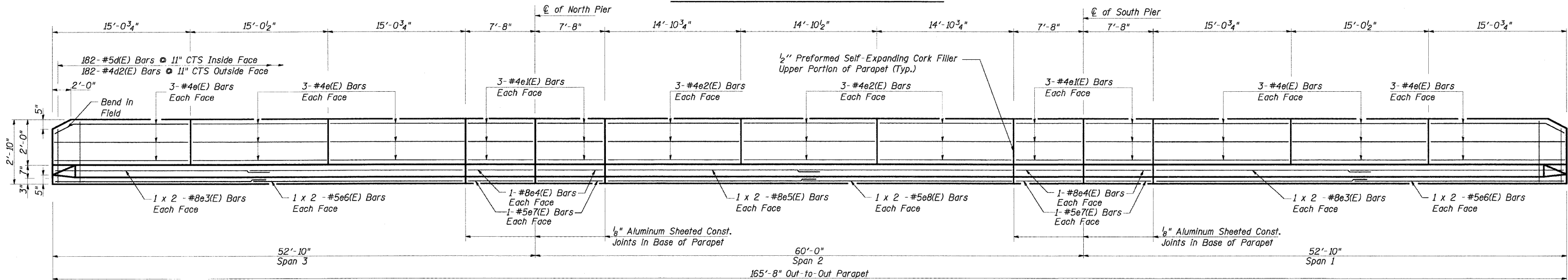


STATE OF ILLINOIS
DEPARTMENT OF TRANSPORTATION

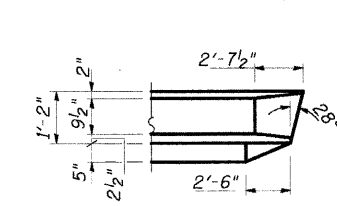
F.A.R.T.E.	SECTION	COUNTY	TOTAL SHEETS	SHEET NO.
2843	3249B-R	COOK	64	33
FED. ROAD DIST. NO.		ILLINOIS	FED. AID PROJECT	
Sheet 9 of 22			Contract No. 62539	



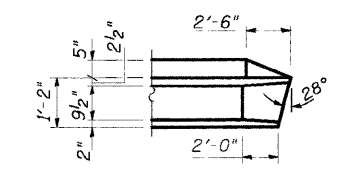
INSIDE ELEVATION OF WEST PARAPET



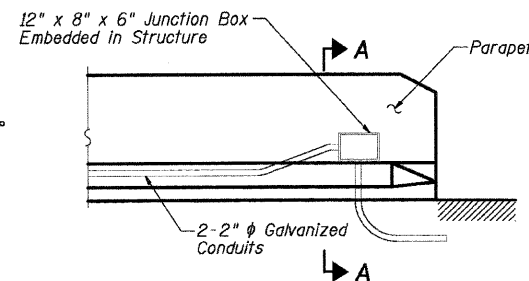
INSIDE ELEVATION OF EAST PARAPET



PARAPET DETAIL 1



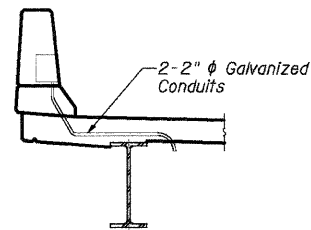
PARAPET DETAIL 2



JUNCTION BOX EMBEDDED IN PARAPET

Notes:

1. The Junction Box Shall Only be Installed when Indicated on the Plans or as Directed by the Engineer to Facilitate the Installation of Unit Duct into the Conduit Embedded in the Parapet.
2. The Junction Box Shall be Paid for at the Unit Price for Junction Box, Embedded in Structure, 12" x 8" x 6"
3. The Exact Location of the Junction Box Shall be Determined by the Engineer.



SECTION A-A

Notes: See Sheet #10 of 22 for Superstructure Details and Bill of Material.

Reinforcement bars designated (E) shall be epoxy coated.

Bars Indicated thus 1 x 2-#8 etc. Indicates 1 Line of Bars With 2 Lengths per Line.

Minimum Bar Lap For #4 Bar - 1'-8".

Minimum Bar Lap For #5 Bar - 2'-2".

Minimum Bar Lap For #8 Bar - 4'-6".

For Deck Diaphragm, See Sht #8 of 22.

REVISIONS	
NAME	DATE

PARAPET ELEVATION

DIXIE HIGHWAY OVER
BUTTERFIELD CREEK
F.A.U. ROUTE 2843 SECTION 3249B-R
STA. 78+55.00
COOK COUNTY
STRUCTURE NUMBER 016-7946

SCALE: NOT-TO-SCALE
DATE 6-25-09

DRAWN BY BV
DESIGNED BY BS
CHECKED BY PK

RME Rubinos & Mesia Engineers, Inc.

SPINBLESS

FILES \$
DATES \$
TIME \$