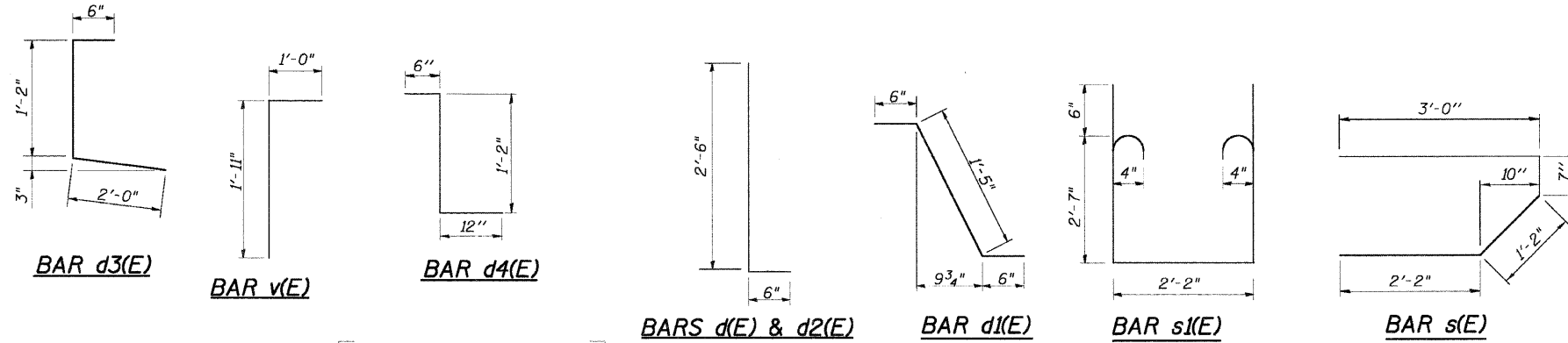


STATE OF ILLINOIS  
DEPARTMENT OF TRANSPORTATION

F.A.R.T.E.	SECTION	COUNTY	TOTAL SHEETS	SHEET NO.
2843	3249B-R	COOK	64	34
FED. ROAD DIST. NO.		ILLINOIS	FED. AID PROJECT-	
Sheet 10 of 22			Contract No. 62539	



**SUPERSTRUCTURE  
BILL OF MATERIAL**

Bar	No.	Size	Length	Shape
a(E)	664	#5	26'-2"	—
a1(E)	444	#5	25'-10"	—
a2(E)	332	#6	4'-6"	—
a3(E)	8	#6	29'-4"	—
b(E)	348	#5	29'-5"	—
b1(E)	112	#6	34'-9"	—
b2(E)	350	#5	25'-6"	—
d(E)	364	#5	3'-0"	—
d1(E)	358	#5	2'-5"	—
d2(E)	364	#4	3'-0"	—
d3(E)	364	#4	3'-8"	—
d4(E)	12	#5	2'-8"	—
e(E)	72	#4	14'-9"	—
e1(E)	48	#4	7'-5"	—
e2(E)	36	#4	14'-7"	—
e3(E)	16	#8	24'-10"	—
e4(E)	16	#8	7'-4"	—
e5(E)	8	#8	24'-7"	—
e6(E)	16	#5	23'-8"	—
e7(E)	16	#5	7'-4"	—
e8(E)	8	#5	23'-5"	—
m(E)	8	#6	29'-0"	—
m1(E)	12	#6	29'-10"	—
m2(E)	32	#6	9'-8"	—
m3(E)	12	#6	7'-4"	—
m4(E)	4	#6	3'-1"	—
m5(E)	4	#6	3'-7"	—
m6(E)	12	#6	16'-7"	—
m7(E)	20	#6	18'-10"	—
s(E)	124	#5	6'-11"	—
s1(E)	112	#4	8'-4"	—
v(E)	108	#6	2'-11"	—
Reinforcement Bars, Epoxy Coated		Pound	70800	
Concrete Superstructure		Cu Yd	300	
Bar Splacers		Each	690	

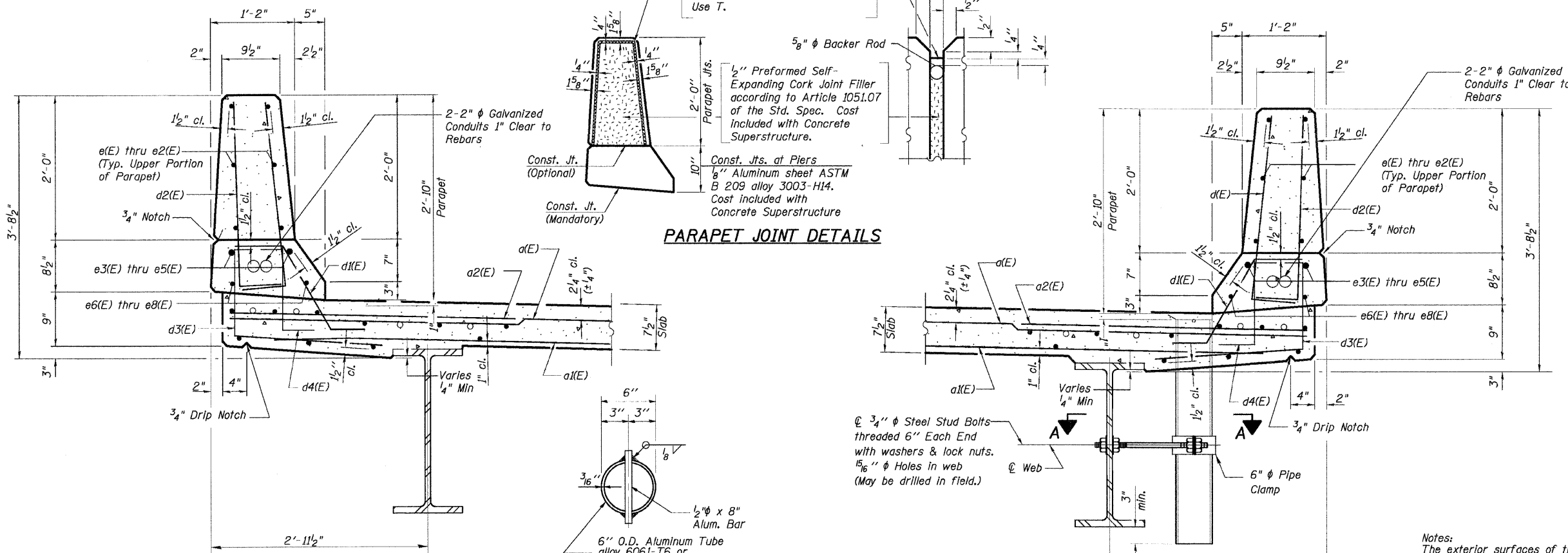
Non-staining gray one component non-sag elastomeric gun grade polyurethane sealant meeting the requirements of ASTM C-920, Type S, Grade NS, Class 25, Use T.

1/2" Preformed Self-Expanding Cork Joint Filler according to Article 1051.07 of the Std. Spec. Cost included with Concrete Superstructure.

5/8" φ Backer Rod

Const. Jts. at Piers  
1/8" Aluminum sheet ASTM B 209 alloy 3003-H14. Cost included with Concrete Superstructure

**PARAPET JOINT DETAILS**



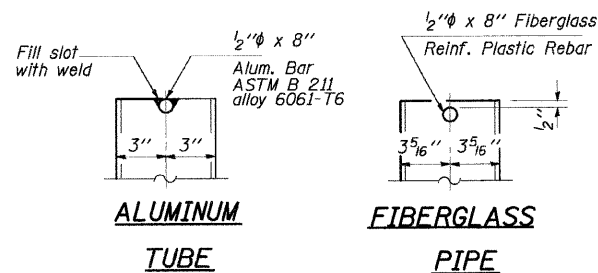
**SECTION THRU WEST PARAPET**

**TOP PLAN**

(Showing Aluminum Tube)

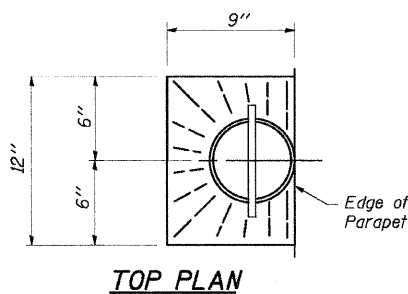
**SECTION THRU EAST PARAPET**

Notes:  
The exterior surfaces of the floor drains shall be painted with the finish coat as specified in the special provisions for Cleaning and Painting New Metal Structures. The exterior surfaces of the drains shall be cleaned according to Steel Structures Painting Council's Spec. SSPC-SP1 prior to painting. Fiberglass pipe shall conform to ASTM D 2996, with short-time rupture strength hoop tensile stress of 30,000 p.s.i. minimum.

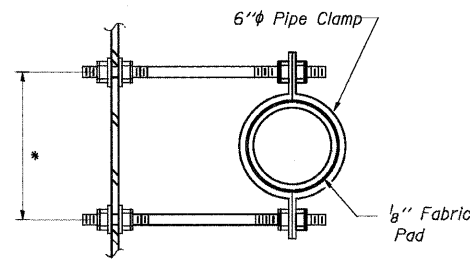


**ALUMINUM  
TUBE**

**FIBERGLASS  
PIPE**



**TOP PLAN**



**SECTION A-A**

\* Dimension as required by Pipe Clamp

REVISIONS	
NAME	DATE

**DECK DETAILS &  
BILL OF MATERIAL**

DIXIE HIGHWAY OVER  
BUTTERFIELD CREEK  
F.A.U. ROUTE 2843 SECTION 3249B-R  
STA. 78+55.00  
COOK COUNTY  
STRUCTURE NUMBER 016-7946

SCALE: NOT-TO-SCALE  
DATE 6-25-09

DRAWN BY BY  
DESIGNED BY BS  
CHECKED BY PK

**RME** Rubinos & Mesia Engineers, Inc.