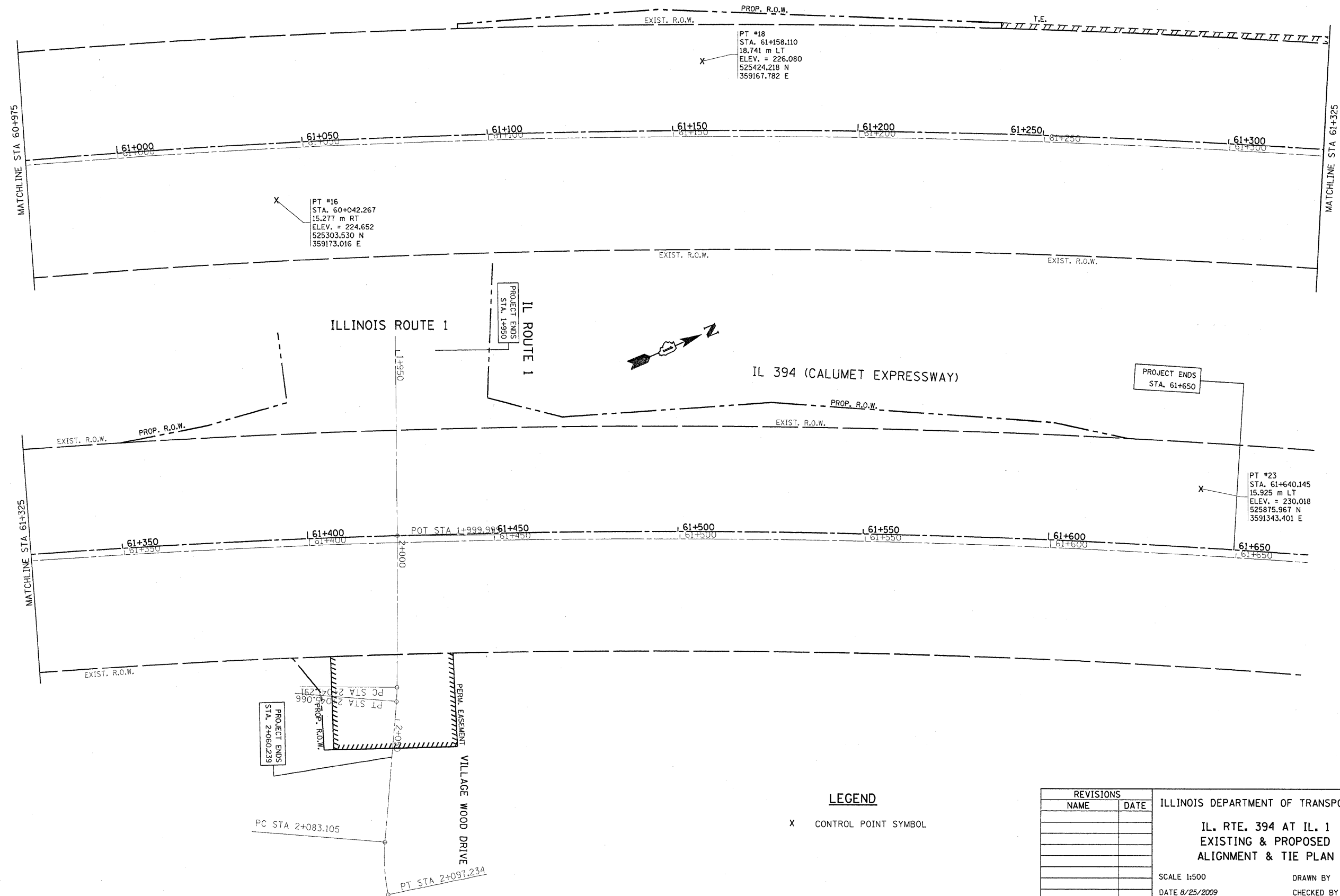


REF-0115  
REF-0116

F.A.P. RTE.	SECTION	COUNTY	TOTAL SHEETS	SHEET NO.
332/876	2002-113R	WILL	242	25
STA. 60+975		TO STA. 61+650		
FED. ROAD DIST. NO. 1		ILLINOIS FED. AID PROJECT		

IL 394 (CALUMET EXPRESSWAY)



**LEGEND**

X CONTROL POINT SYMBOL

REVISIONS		ILLINOIS DEPARTMENT OF TRANSPORTATION
NAME	DATE	
		<p>IL. RTE. 394 AT IL. 1 EXISTING &amp; PROPOSED ALIGNMENT &amp; TIE PLAN</p> <p>SCALE 1:500                      DRAWN BY DATE 8/25/2009                      CHECKED BY</p>