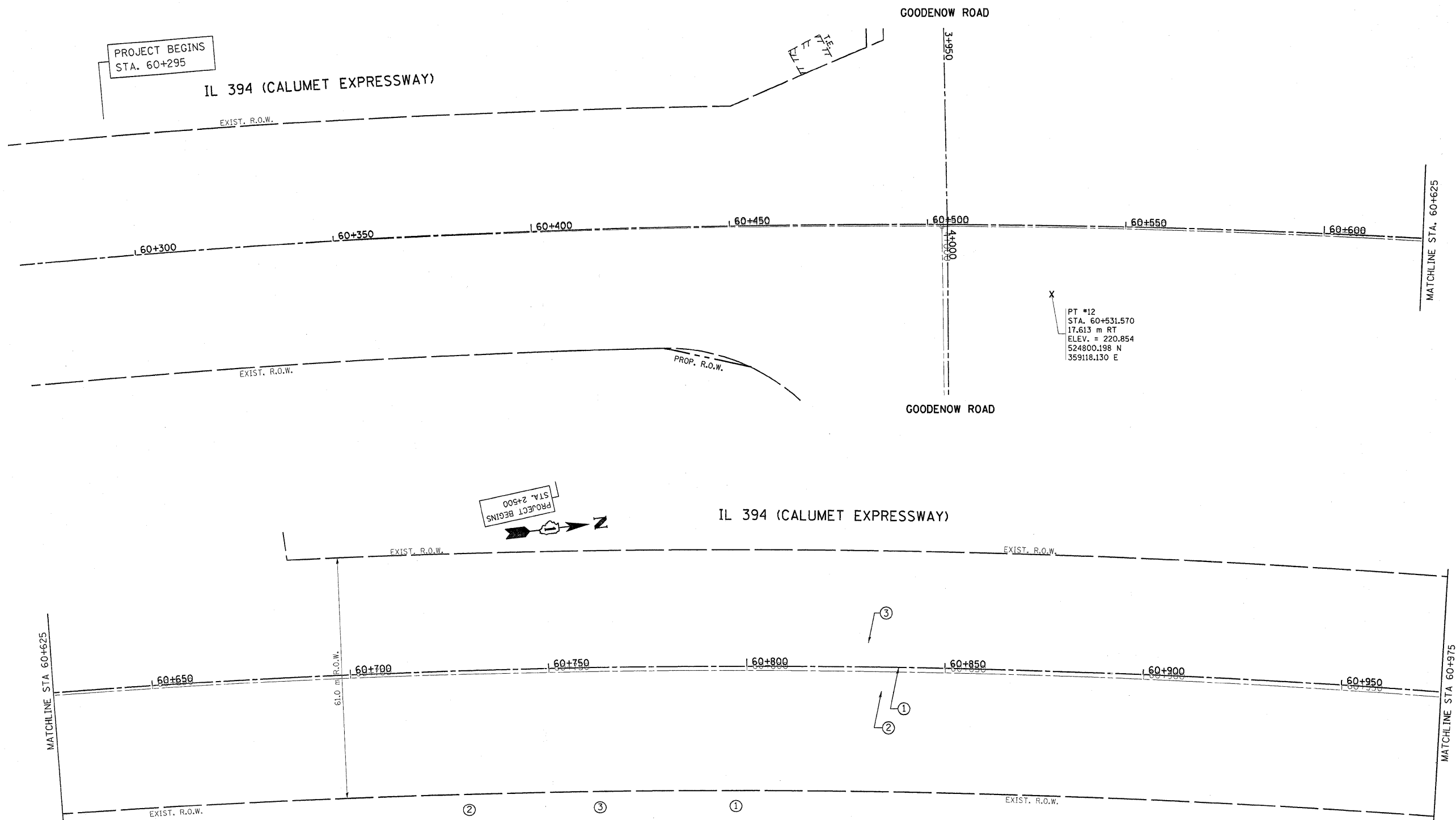


REF-aln3
REF-aln4

F.A.P. RTE.	SECTION	COUNTY	TOTAL SHEETS	SHEET NO.
332/876	2002-113R	WILL	242	26
STA. 60+300		TO STA. 60+975		
FED. ROAD DIST. NO. 1		ILLINOIS FED. AID PROJECT		



X
PT #12
STA. 60+531.570
17.613 m RT
ELEV. = 220.854
524800.198 N
359118.130 E

PROJECT BEGINS
STA. 2+500

PROJECT BEGINS
STA. 60+295

REVISIONS	
NAME	DATE

ILLINOIS DEPARTMENT OF TRANSPORTATION
**IL. RTE. 394 AT IL. 1
EXISTING & PROPOSED
ALIGNMENT & TIE PLAN**
SCALE 1:500
DATE 8/25/2009
DRAWN BY
CHECKED BY

LEGEND

X CONTROL POINT SYMBOL