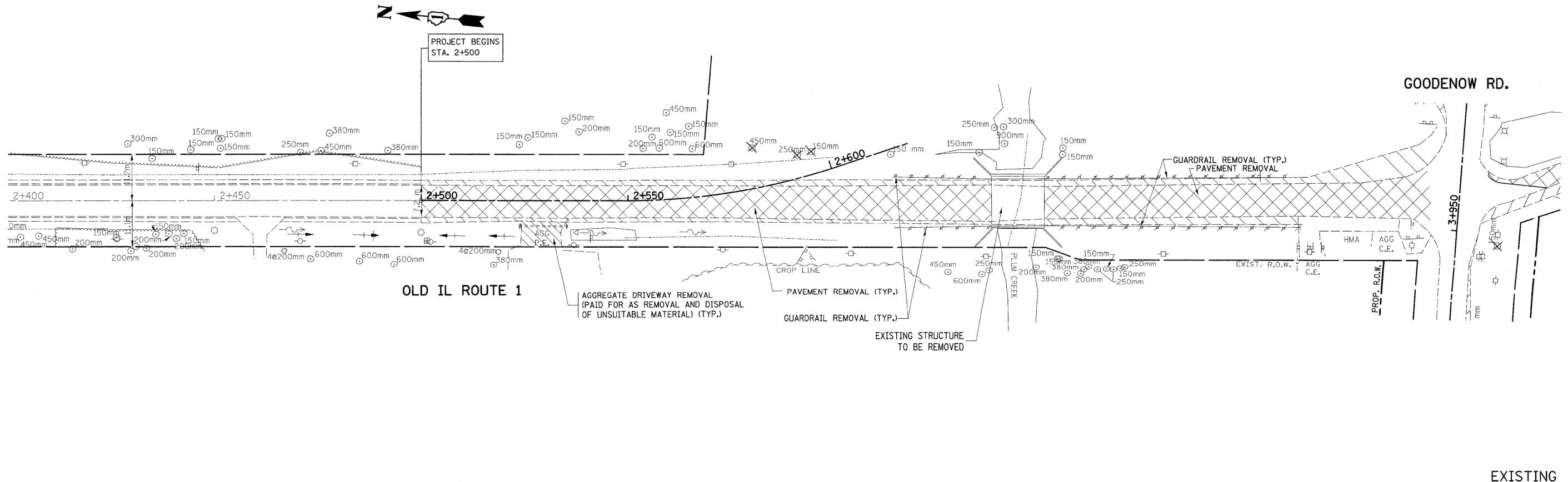
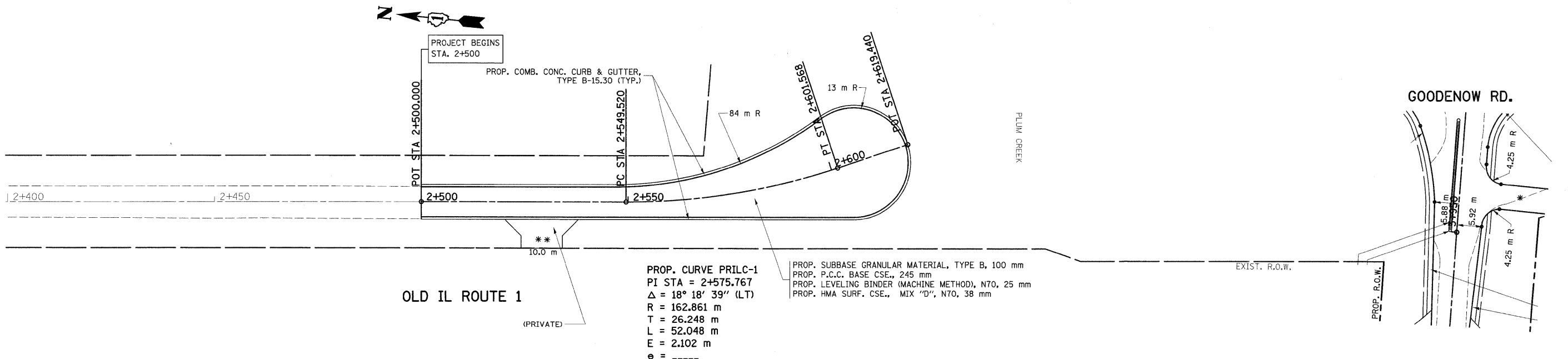


F.A.P. RTE.	SECTION	COUNTY	TOTAL SHEETS	SHEET NO.
332/876	2002-113R	WILL	242	36
STA. 3+750		TO STA. 4+100		
FED. ROAD DIST. NO. 1		ILLINOIS FED. AID PROJECT		



EXISTING  
PROPOSED



PROP. CURVE PRILC-1  
 PI STA = 2+575.767  
 $\Delta = 18^\circ 18' 39''$  (LT)  
 R = 162.861 m  
 T = 26.248 m  
 L = 52.048 m  
 E = 2.102 m  
 e = -----  
 T.R. = ----- m  
 S.E. RUN. = ----- m  
 P.C. STA = 2+549.520  
 P.T. STA = 2+601.568

PROP. SUBBASE GRANULAR MATERIAL, TYPE B, 100 mm  
 PROP. P.C.C. BASE C.S.E., 245 mm  
 PROP. LEVELING BINDER (MACHINE METHOD), N70, 25 mm  
 PROP. HMA SURF. C.S.E., MIX "D", N70, 38 mm

REVISIONS	
NAME	DATE

ILLINOIS DEPARTMENT OF TRANSPORTATION

**IL. RTE. 394 AT IL. 1  
EXISTING AND PROPOSED  
ROADWAY PLAN**

SCALE 1:500  
DATE 8/26/2009

DRAWN BY  
CHECKED BY