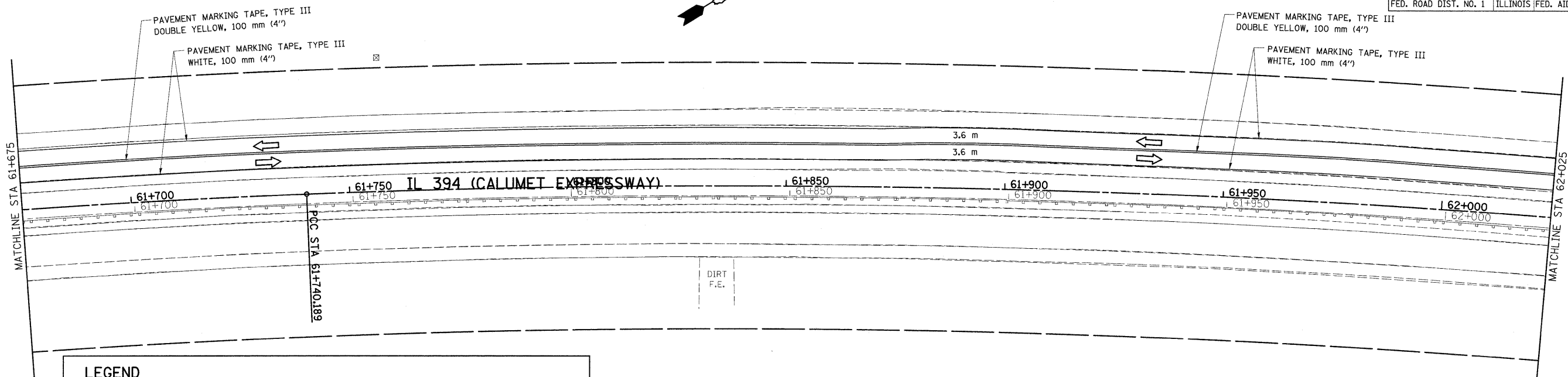
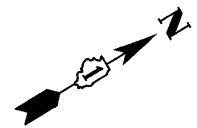
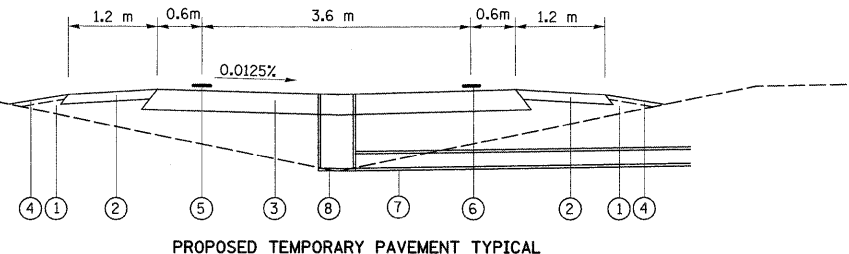
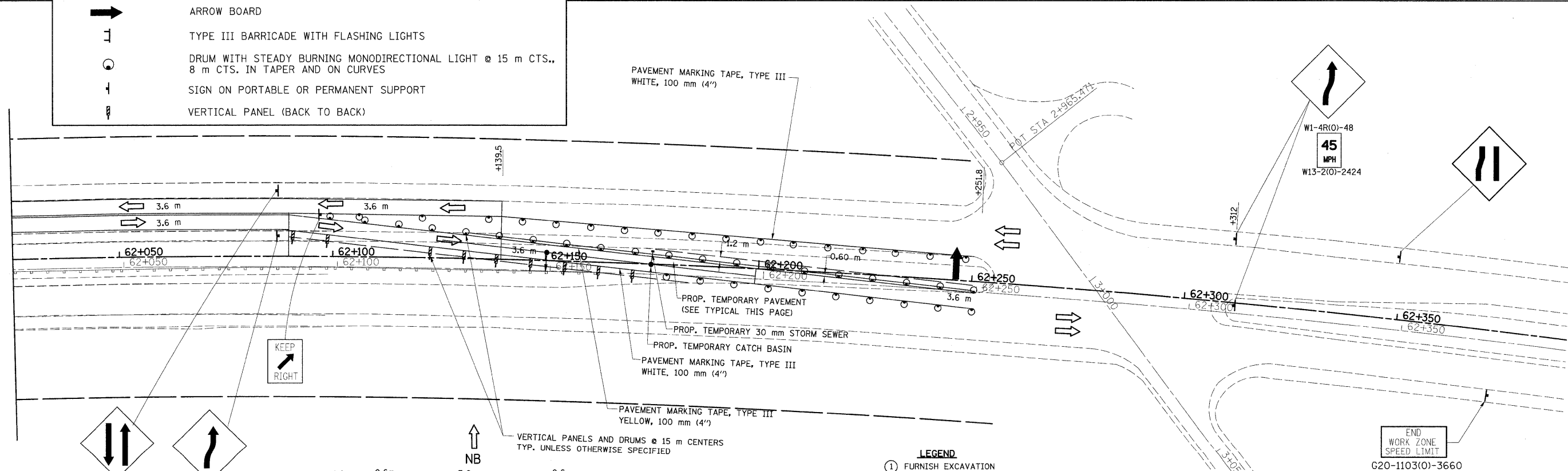


F.A.P. RTE.	SECTION	COUNTY	TOTAL SHEETS NO.	SHEET NO.
332/876	2002-113R	WILL	242	55
STA. 61+675		TO STA. 62+000		
FED. ROAD DIST. NO. 1		ILLINOIS FED. AID PROJECT		



LEGEND

- WORK ZONE
- TRAFFIC FLOW DIRECTION
- ARROW BOARD
- TYPE III BARRICADE WITH FLASHING LIGHTS
- DRUM WITH STEADY BURNING MONODIRECTIONAL LIGHT @ 15 m CTS., 8 m CTS. IN TAPER AND ON CURVES
- SIGN ON PORTABLE OR PERMANENT SUPPORT
- VERTICAL PANEL (BACK TO BACK)



- LEGEND**
- 1 FURNISH EXCAVATION
 - 2 AGGREGATE SHOULDER, 150 mm
 - 3 TEMPORARY PAVEMENT
 - (A) HMA BASE COURSE, 300 mm
 - (B) HMA SURFACE COURSE, MIX D, N50, 44 mm
 - 4 TEMPORARY EROSION CONTROL SEEDING
 - 5 PAVEMENT MARKING TAPE, TYPE III WHITE, 100 mm (4")
 - 6 PAVEMENT MARKING TAPE, TYPE III YELLOW, 100 mm (4")
 - 7 STORM SEWER, TYPE I, 300 mm
 - 8 CATCH BASIN, TYPE A

REVISIONS	
NAME	DATE

ILLINOIS DEPARTMENT OF TRANSPORTATION
SUGGESTED MAINTENANCE OF TRAFFIC
IL. RTE. 394 AT IL. 1
STAGE II

SCALE 1:500
 DATE 8/27/2009

DRAWN BY
 CHECKED BY