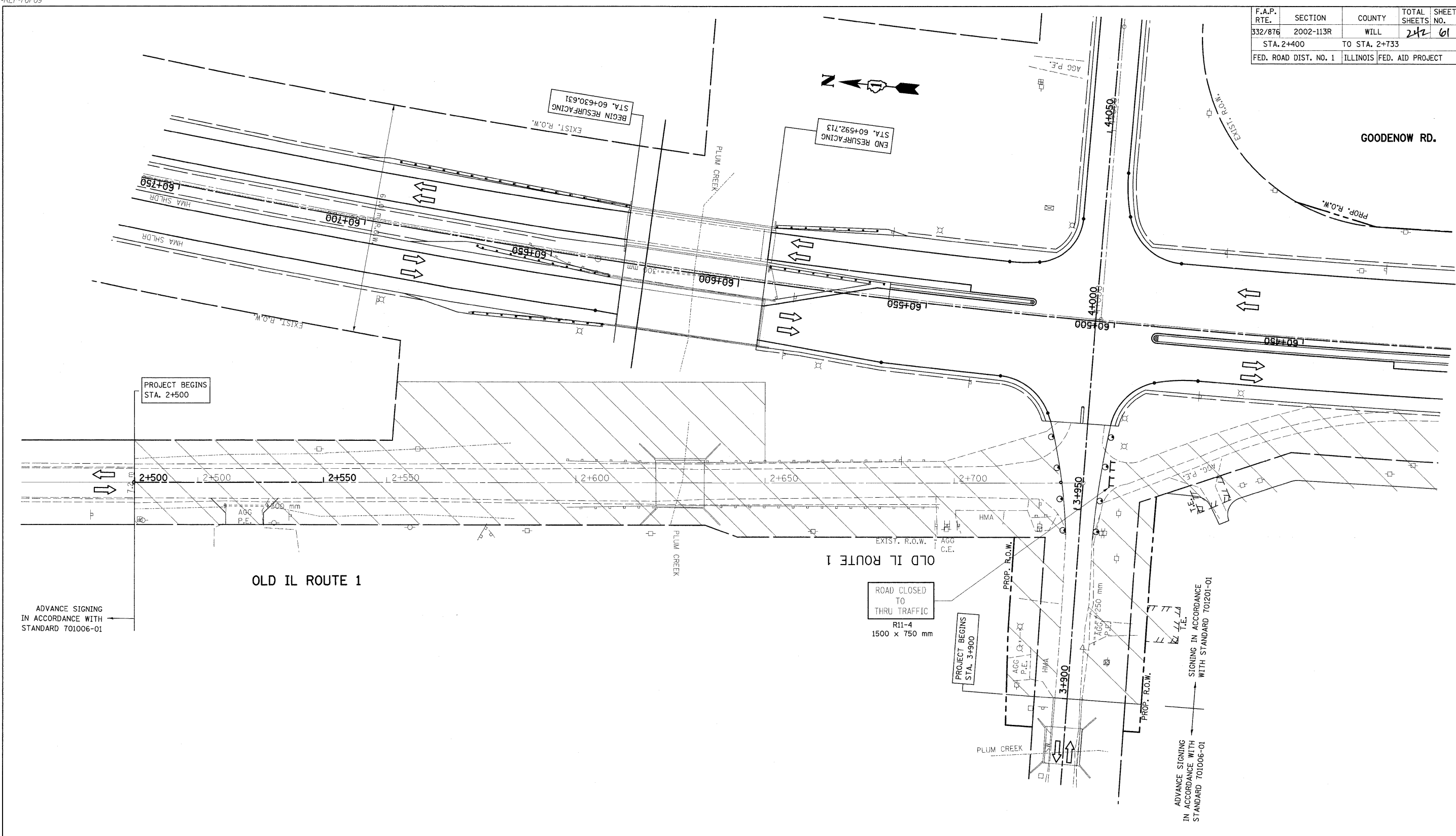
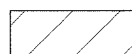
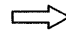



F.A.P. RTE.	SECTION	COUNTY	TOTAL SHEETS	SHEET NO.
332/876	2002-113R	WILL	242	61
STA. 2+400		TO STA. 2+733		
FED. ROAD DIST. NO. 1		ILLINOIS FED. AID PROJECT		



**LEGEND**

-  WORK ZONE
-  TRAFFIC FLOW
-  DRUM WITH STEADY BURNING MONODIRECTIONAL LIGHT @ 15 m CTS., 8 m CTS. IN TAPER AND ON CURVES

REVISIONS	
NAME	DATE

ILLINOIS DEPARTMENT OF TRANSPORTATION  
**SUGGESTED MAINTENANCE OF TRAFFIC**  
**IL. RTE. 394 AT IL. 1**  
**STAGE III**

SCALE 1:500  
 DATE 8/27/2009

DRAWN BY  
 CHECKED BY