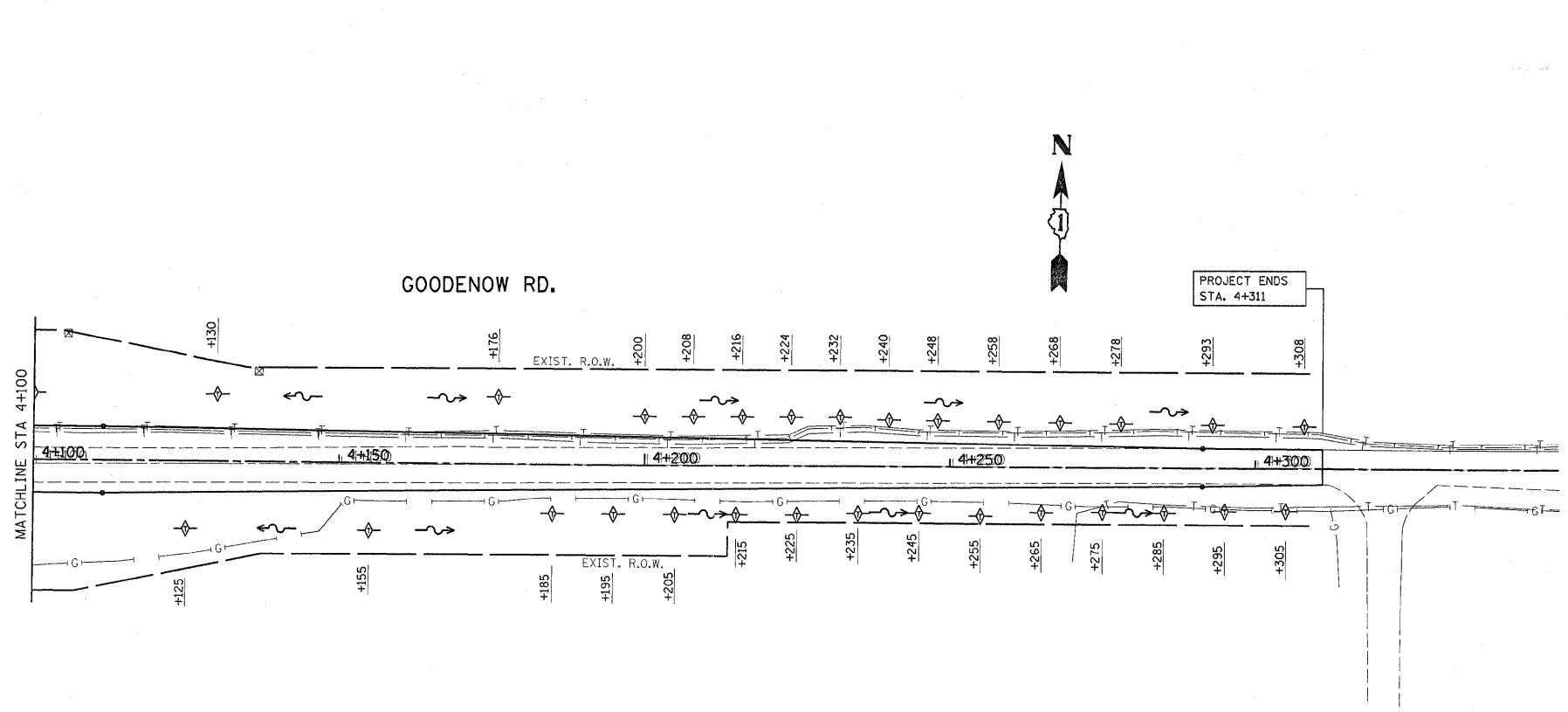
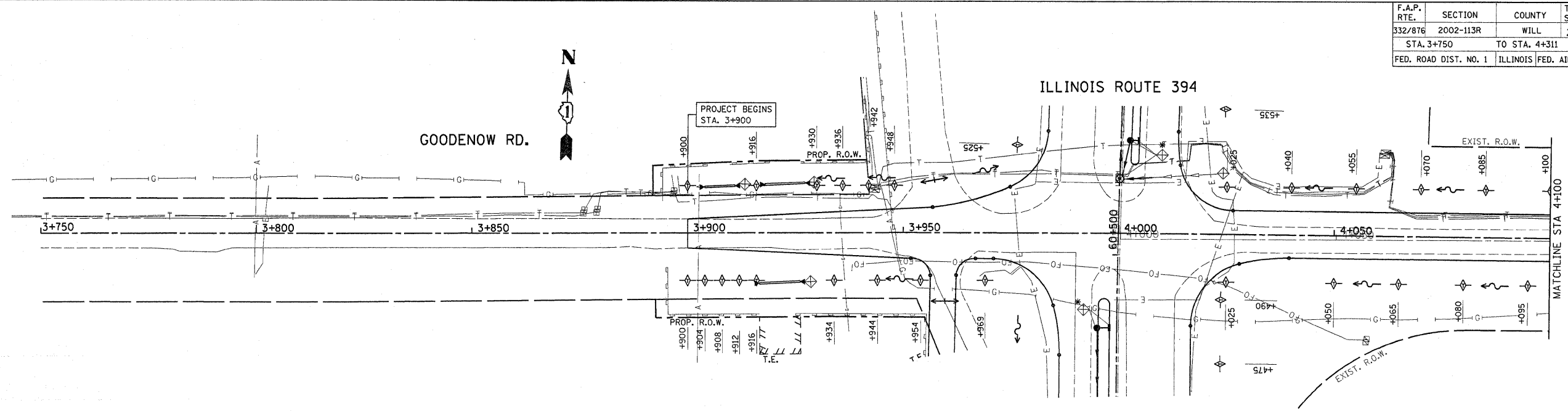


*REF-er01
*REF-er02

F.A.P. RTE.	SECTION	COUNTY	TOTAL SHEETS	SHEET NO.
332/876	2002-113R	WILL	242	67
STA. 3+750		TO STA. 4+311		
FED. ROAD DIST. NO. 1		ILLINOIS FED. AID PROJECT		



- LEGEND**
- PERIMETER EROSION CONTROL (SHALL BE INSTALLED BEFORE ANY WORK ON THE PROJECT CAN BEGIN)
 - ◇ TEMPORARY DITCH CHECKS, URETHANE FORM (SHALL BE INSTALLED IMMEDIATELY AFTER THE AREA IS DISTURBED.)
 - ◇* SEDIMENT CONTROL DRAINAGE STRUCTURE INLET FILTER CLEANING (SHALL BE INSTALLED IMMEDIATELY AFTER THE AREA IS DISTURBED.)
 - ◇ INLET FILTERS (SHALL BE INSTALLED IMMEDIATELY AFTER THE AREA IS DISTURBED.)

REVISIONS		ILLINOIS DEPARTMENT OF TRANSPORTATION
NAME	DATE	
		IL. RTE. 394 AT IL. 1 EROSION CONTROL PLAN
SCALE 1:500		DRAWN BY
DATE 8/25/2009		CHECKED BY