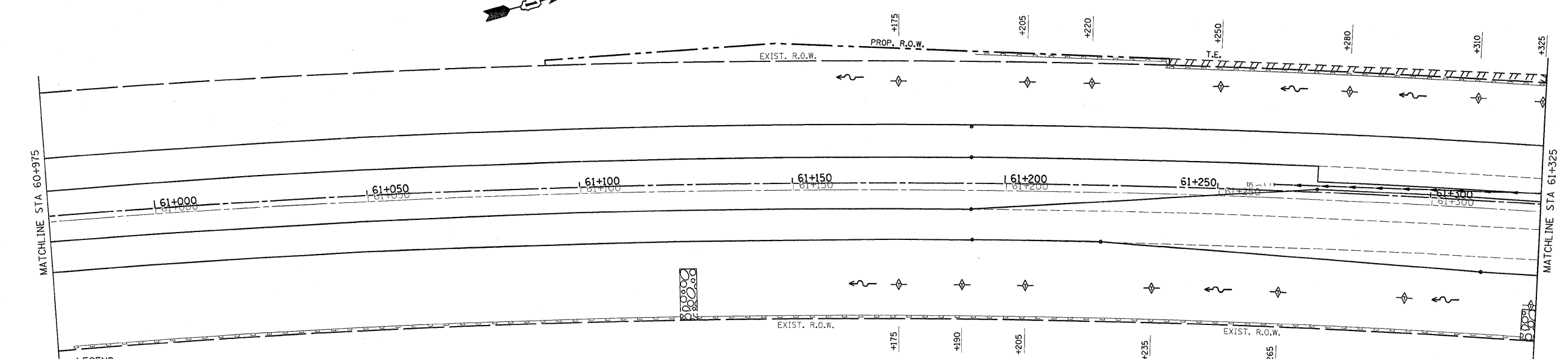


REF-er05
REF-er06

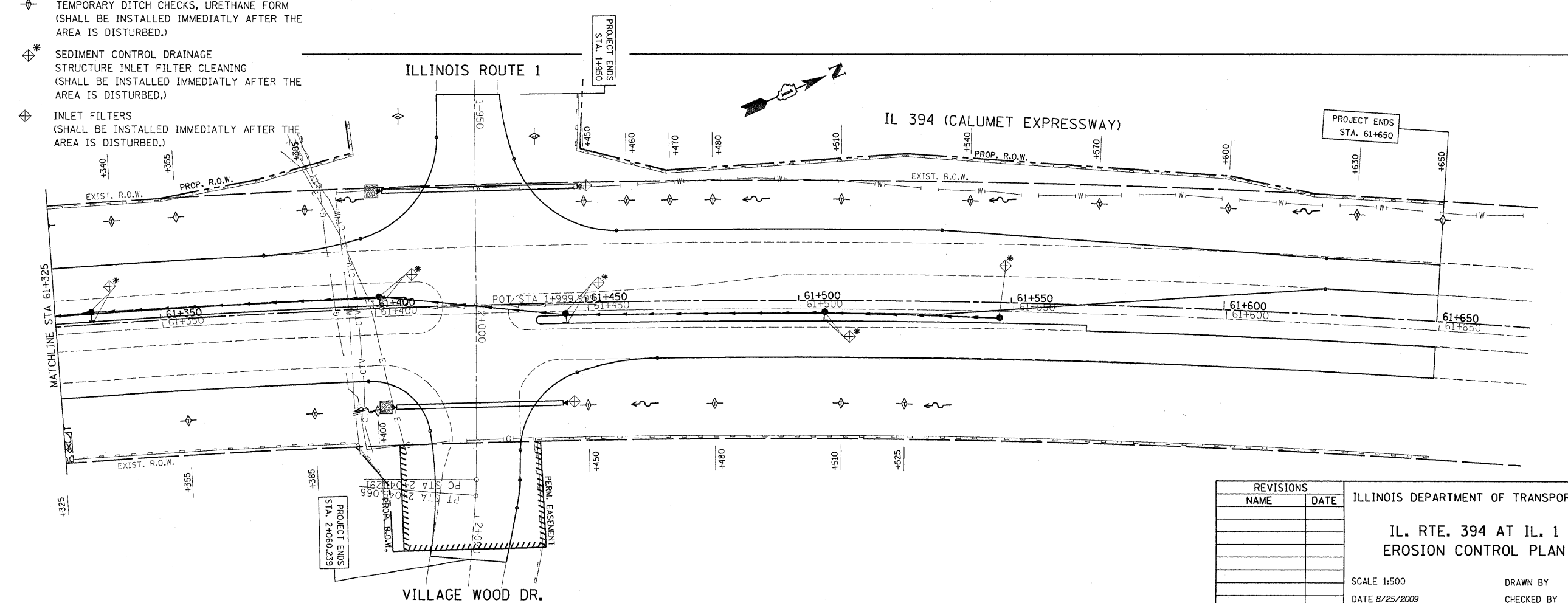
F.A.P. RTE.	SECTION	COUNTY	TOTAL SHEETS	SHEET NO.
332/876	2002-113R	WILL	242	69
STA. 60+975		TO STA. 61+650		
FED. ROAD DIST. NO. 1		ILLINOIS FED. AID PROJECT		

IL 394 (CALUMET EXPRESSWAY)



LEGEND

- PERIMETER EROSION CONTROL
 (SHALL BE INSTALLED BEFORE ANY WORK ON THE PROJECT CAN BEGIN)
- TEMPORARY DITCH CHECKS, URETHANE FORM
 (SHALL BE INSTALLED IMMEDIATELY AFTER THE AREA IS DISTURBED.)
- SEDIMENT CONTROL DRAINAGE STRUCTURE INLET FILTER CLEANING
 (SHALL BE INSTALLED IMMEDIATELY AFTER THE AREA IS DISTURBED.)
- INLET FILTERS
 (SHALL BE INSTALLED IMMEDIATELY AFTER THE AREA IS DISTURBED.)



REVISIONS	
NAME	DATE

ILLINOIS DEPARTMENT OF TRANSPORTATION

**IL. RTE. 394 AT IL. 1
EROSION CONTROL PLAN**

SCALE 1:500
DATE 8/25/2009

DRAWN BY
CHECKED BY