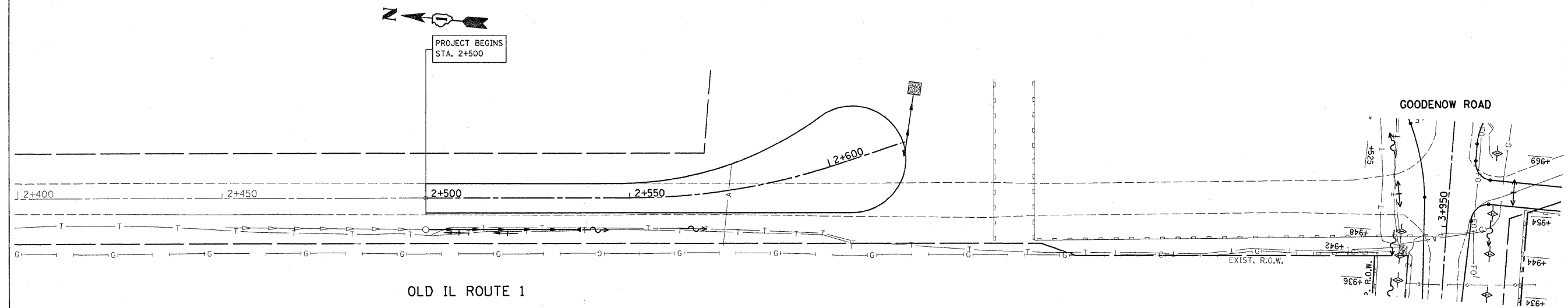
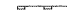





F.A.P. RTE.	SECTION	COUNTY	TOTAL SHEETS	SHEET NO.
332/876	2002-113R	WILL	242	70
STA. 60+295		TO STA. 60+975		
FED. ROAD DIST. NO. 1		ILLINOIS FED. AID PROJECT		



**LEGEND**

-  PERIMETER EROSION CONTROL  
 (SHALL BE INSTALLED BEFORE ANY WORK ON THE PROJECT CAN BEGIN)
-  TEMPORARY DITCH CHECKS, URETHANE FORM  
 (SHALL BE INSTALLED IMMEDIATLY AFTER THE AREA IS DISTURBED.)
-  SEDIMENT CONTROL DRAINAGE STRUCTURE INLET FILTER CLEANING  
 (SHALL BE INSTALLED IMMEDIATLY AFTER THE AREA IS DISTURBED.)
-  INLET FILTERS  
 (SHALL BE INSTALLED IMMEDIATLY AFTER THE AREA IS DISTURBED.)

REVISIONS		ILLINOIS DEPARTMENT OF TRANSPORTATION
NAME	DATE	
		<p align="center"><b>IL. RTE. 394 AT IL. 1</b>  <b>EROSION CONTROL PLAN</b></p> <p>SCALE 1:500                      DRAWN BY</p> <p>DATE 8/25/2009                      CHECKED BY</p>