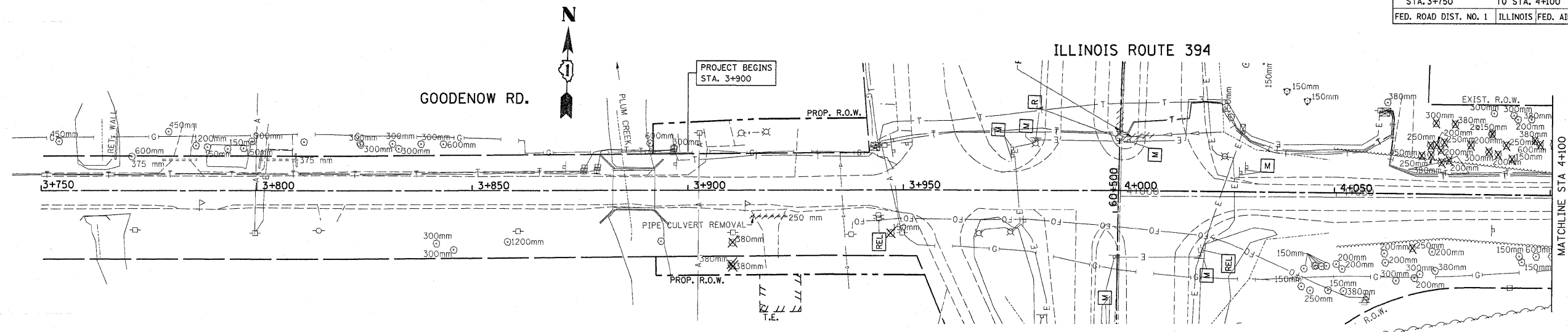
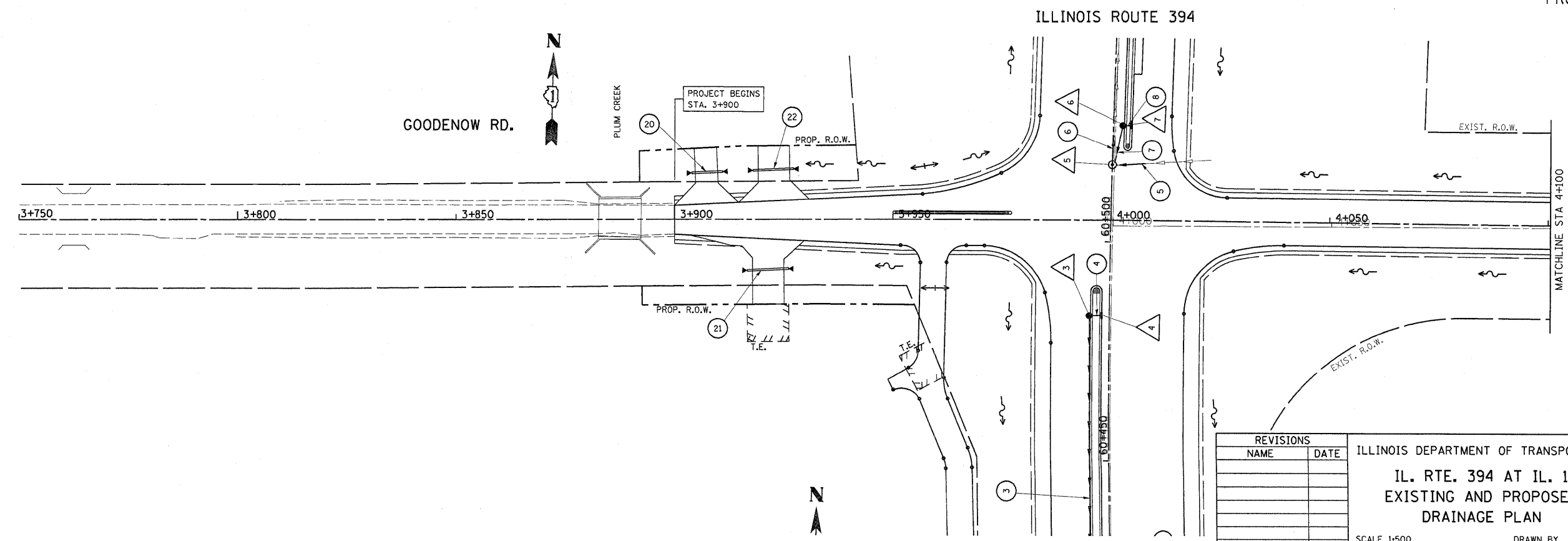


F.A.P. RTE.	SECTION	COUNTY	TOTAL SHEETS	SHEET NO.
332/876	2002-113R	WILL	242	16
STA. 3+750		TO STA. 4+100		
FED. ROAD DIST. NO. 1		ILLINOIS FED. AID PROJECT		



EXISTING
PROPOSED



REVISIONS	
NAME	DATE

ILLINOIS DEPARTMENT OF TRANSPORTATION
IL. RTE. 394 AT IL. 1
EXISTING AND PROPOSED
DRAINAGE PLAN
 SCALE 1:500
 DATE 8/25/2009
 DRAWN BY
 CHECKED BY