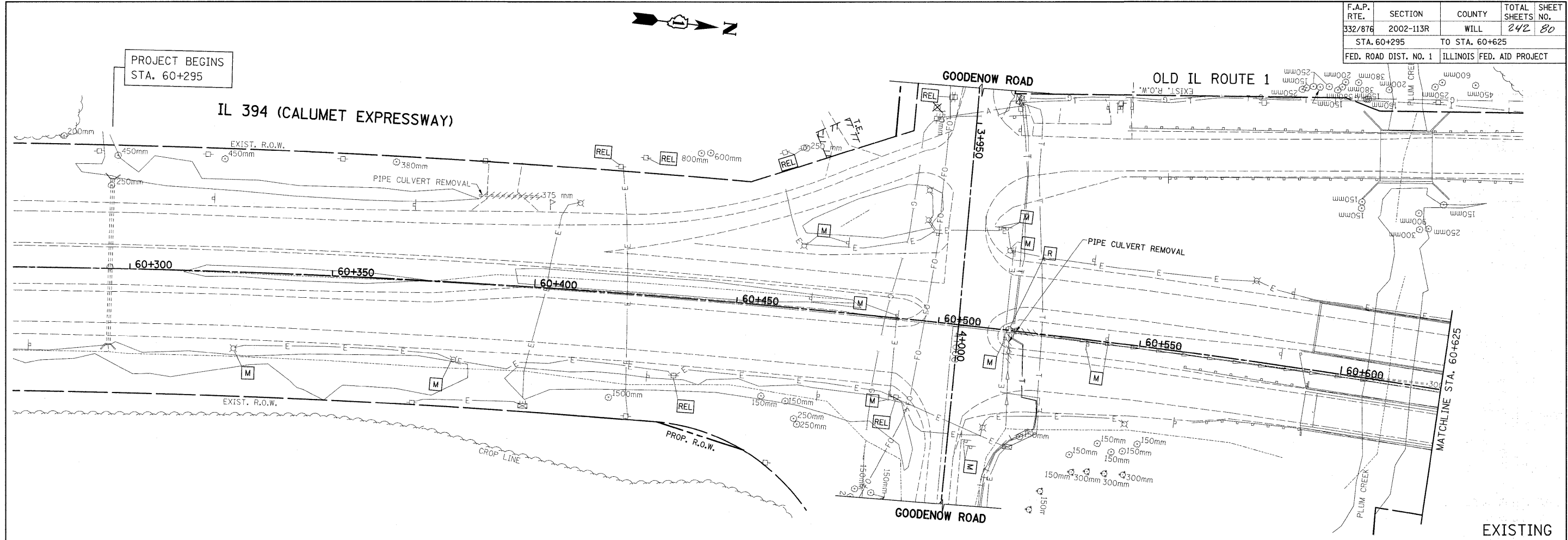
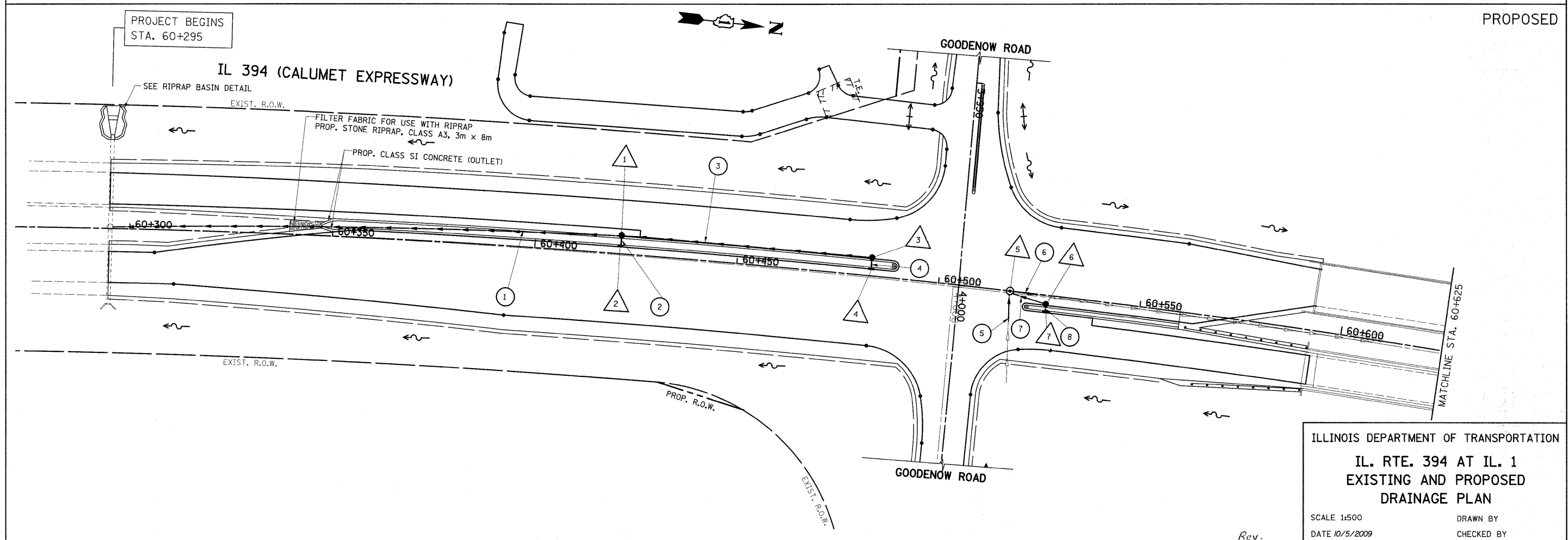


F.A.P. RTE.	SECTION	COUNTY	TOTAL SHEETS NO.	SHEET NO.
332/876	2002-113R	WILL	242	80
STA. 60+295		TO STA. 60+625		
FED. ROAD DIST. NO. 1		ILLINOIS FED. AID PROJECT		



EXISTING
PROPOSED



ILLINOIS DEPARTMENT OF TRANSPORTATION
**IL. RTE. 394 AT IL. 1
 EXISTING AND PROPOSED
 DRAINAGE PLAN**
 SCALE 1:500
 DATE 10/5/2009
 DRAWN BY
 CHECKED BY

Rev.