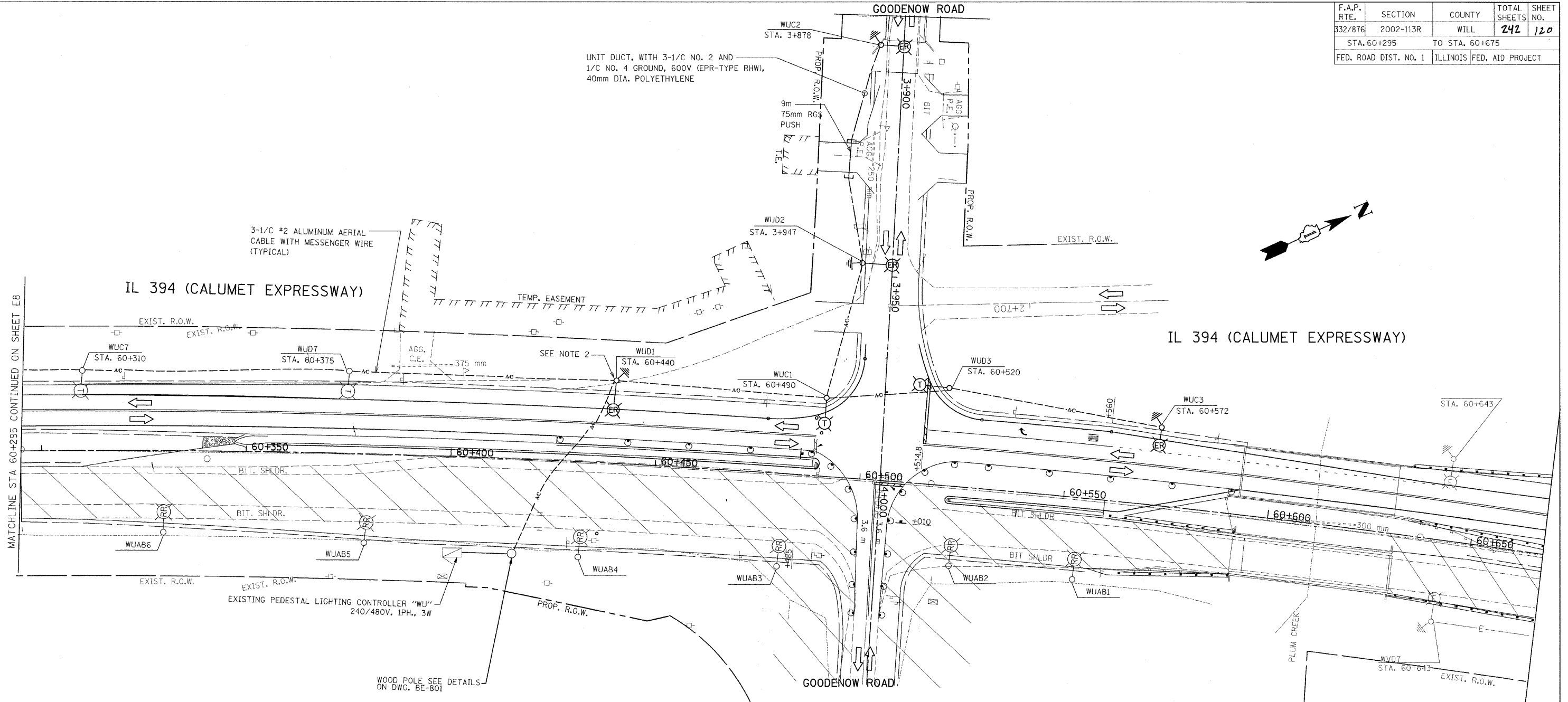


F.A.P. RTE.	SECTION	COUNTY	TOTAL SHEETS	SHEET NO.
332/876	2002-113R	WILL	242	120
STA. 60+295		TO STA. 60+675		
FED. ROAD DIST. NO. 1		ILLINOIS FED. AID PROJECT		



MATCHLINE STA 60+295 CONTINUED ON SHEET E8

UNIT DUCT, WITH 3-1/2 NO. 2 AND 1/2 NO. 4 GROUND, 600V (EPR-TYPE RHW), 40mm DIA. POLYETHYLENE

3-1/2 #2 ALUMINUM AERIAL CABLE WITH MESSENGER WIRE (TYPICAL)

SEE NOTE 2

EXISTING PEDESTAL LIGHTING CONTROLLER "WU" 240/480V, 1PH., 3W

WOOD POLE SEE DETAILS ON DWG. BE-801

- NOTES:**
- ALL TEMPORARY LIGHT POLES SHALL HAVE A MINIMUM SETBACK OF 9M FROM THE EDGE OF TRAVELED PAVEMENT UNLESS NOTED OTHERWISE.
  - CONNECT AERIAL CABLES TO POLE WUD1 TO POWER TEMPORARY LIGHTING ON THE WEST SIDE OF I-394. SEE DETAIL 2 ON DWG. E11.
  - ALL PERMANENT LIGHTING (RELOCATED POLES) AND NEW TEMPORARY WOOD POLES SHALL BE OPERATIONAL AND APPROVED BY THE ENGINEER PRIOR TO THE REMOVAL OF THE TEMPORARY LIGHTING FROM STAGE 2.
  - REFERENCE DRAWING E2 FOR PROPOSED LIGHTING PLAN.
  - INSTALL PROPOSED LIGHTING CONTROLLER AT THE END OF STAGE 3 CONSTRUCTION. FINAL CONNECTIONS SHALL BE MADE IN ACCORDANCE WITH THE PROPOSED LIGHTING PLANS TO THE SATISFACTION OF THE ENGINEER.



Peter B. Leonard 7/9/09  
Exp. 11/30/09

**HOH ASSOCIATES, INC.**  
55 West Jackson Blvd.  
Chicago, Illinois 60604  
312/346-8151  
PROJECT NUMBER: 2660.05  
HOB CAD FILE No. E9.DGN  
PLOT SCALE 1 = 1

REVISIONS	
NAME	DATE

ILLINOIS DEPARTMENT OF TRANSPORTATION  
**IL. RTE. 394 AT GOODENOW  
STAGE 3  
LIGHTING PLAN**  
SCALE 1:500  
DATE 12-6-2005  
DRAWN BY MEK  
CHECKED BY RER

E9