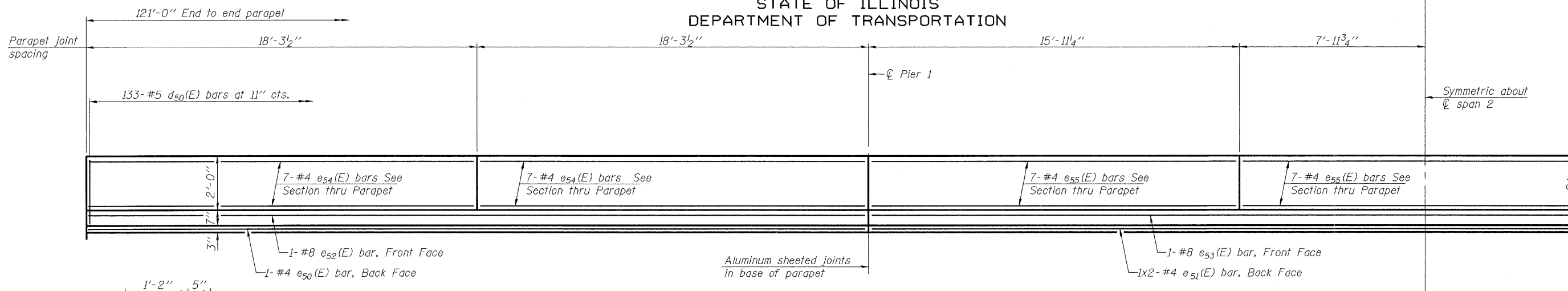
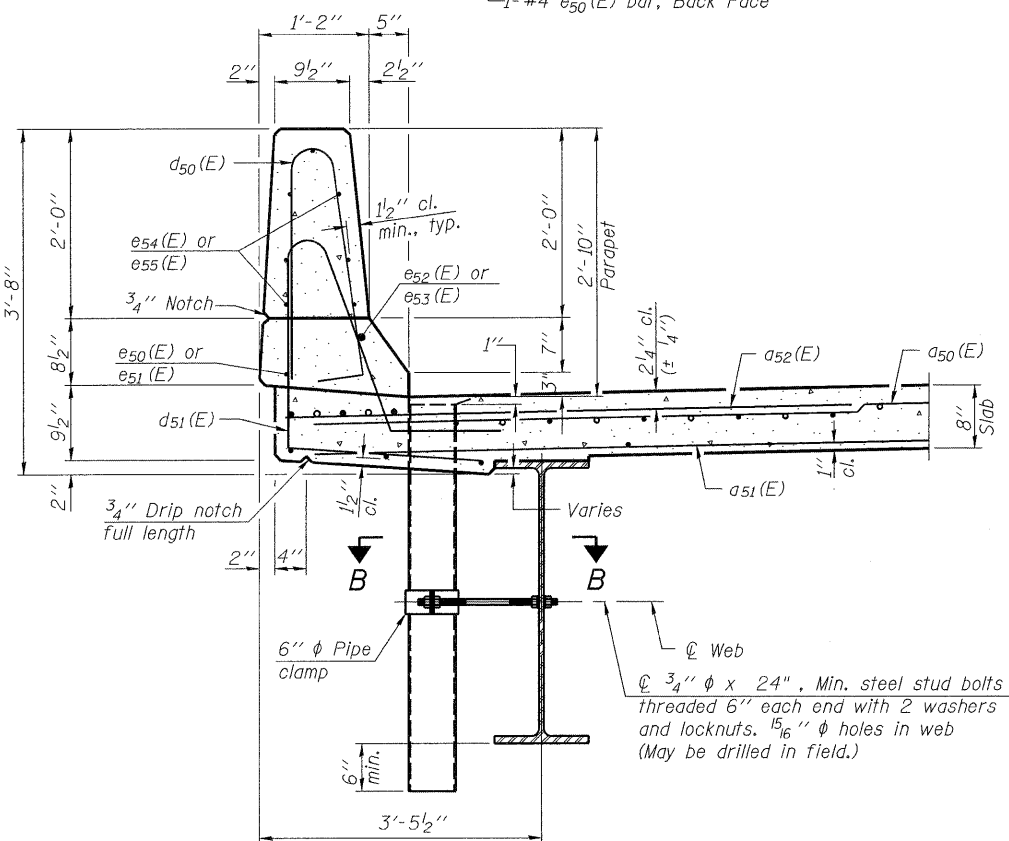


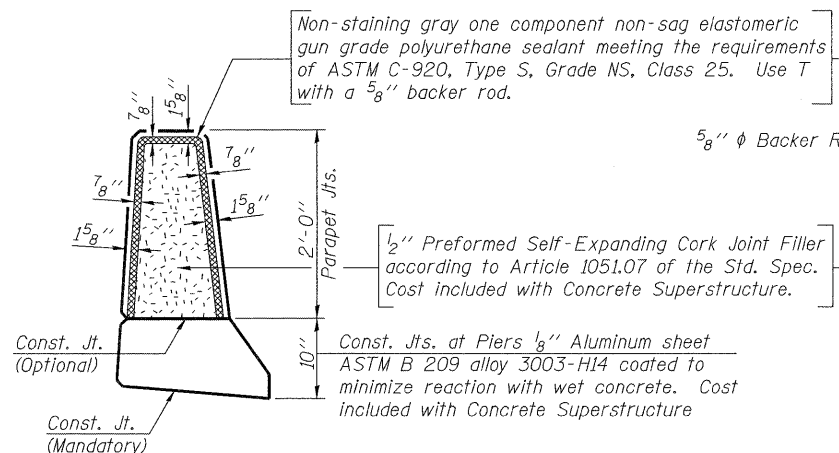
STATE OF ILLINOIS
DEPARTMENT OF TRANSPORTATION



INSIDE ELEVATION OF PARAPET



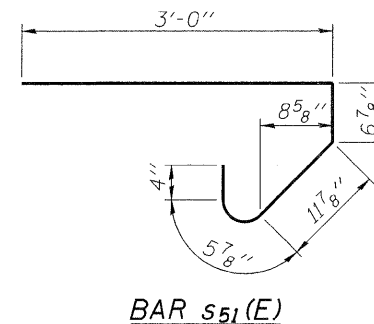
SECTION THRU PARAPET



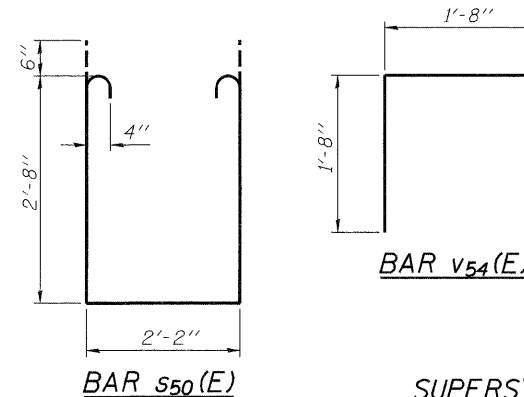
PARAPET JOINT DETAILS

Notes:
The exterior surfaces of the floor drains shall be painted with the finish coat as specified in the special provisions for Cleaning and Painting New Metal Structures. The exterior surfaces of the drains shall be cleaned according to Society of Protective Coatings Spec. SSPC-SP1 prior to painting.
Fiberglass pipe shall conform to ASTM D 2996, with short-time rupture strength hoop tensile stress of 30,000 p.s.i. minimum.
Drains shall be located clear of all diaphragms.

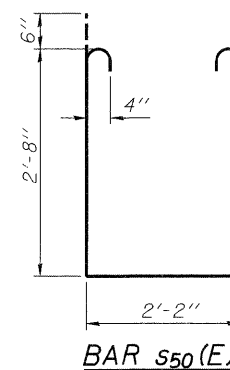
MINIMUM BAR LAP
#4 bar = 1'-8"



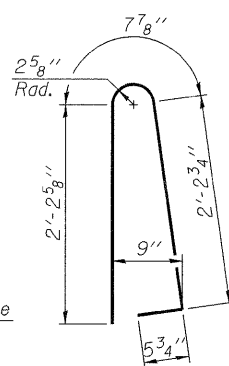
BAR s51(E)



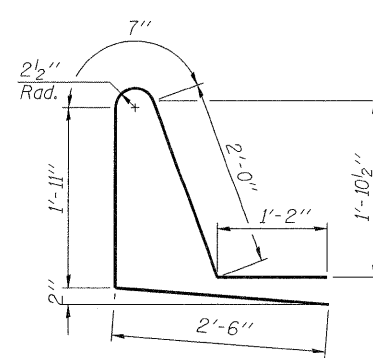
BAR v54(E)



BAR s50(E)



BAR d50(E)



BAR d51(E)

SUPERSTRUCTURE
BILL OF MATERIAL

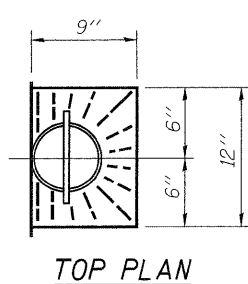
Bar	No.	Size	Length	Shape
a50(E)	224	#5	37'-7"	—
a51(E)	146	#5	36'-11"	—
a52(E)	448	#6	6'-0"	—
a53(E)	16	#5	2'-0"	—
b50(E)	164	#5	31'-6"	—
b51(E)	76	#6	27'-8"	—
b52(E)	180	#5	25'-6"	—
d50(E)	266	#5	5'-7"	⌋
d51(E)	266	#5	8'-2"	⌋
e50(E)	4	#4	36'-4"	—
e51(E)	4	#4	24'-8"	—
e52(E)	4	#8	36'-4"	—
e53(E)	2	#8	47'-7"	—
e54(E)	56	#4	18'-0"	—
e55(E)	42	#4	15'-8"	—
s50(E)	72	#4	8'-6"	⌋
s51(E)	82	#5	5'-5"	⌋
m50(E)	24	#6	9'-0"	—
m51(E)	10	#6	37'-11"	—
m52(E)	10	#6	6'-0"	—
m53(E)	4	#6	3'-2"	—
v55(E)	76	#5	3'-4"	⌋
Reinforcement Bars, Epoxy Coated		Pound		40,480
Concrete Superstructure		Cu. Yds.		169
Bar Splicers		Each		70

SUPERSTRUCTURE DETAILS

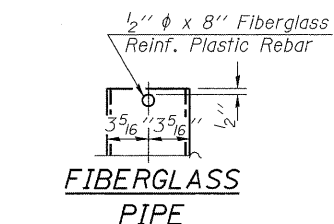
NORTHBOUND ILLINOIS ROUTE 394 OVER PLUM CREEK
STATION 20+07.55



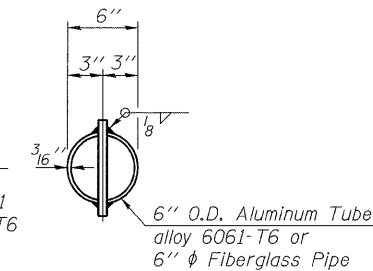
SECTION B-B
*Dimension as required by Pipe Clamp



TOP PLAN



ALUMINUM TUBE



TOP PLAN
(Showing Aluminum Tube)

DESIGNED	SK/GMK/LCM
CHECKED	GBC/GMK/SMK
DRAWN	RR/LCM/SK
CHECKED	GBC/GMK/SMK

SHEET NO. 10 26 SHEETS	F.A.P. RTE. 332	SECTION 2002-113R	COUNTY WILL	TOTAL SHEETS 242	SHEET NO. 155
	SN-099-0147		CONTRACT NO. 62542		
FED. ROAD DIST. NO. 1 ILLINOIS FED. AID PROJECT					