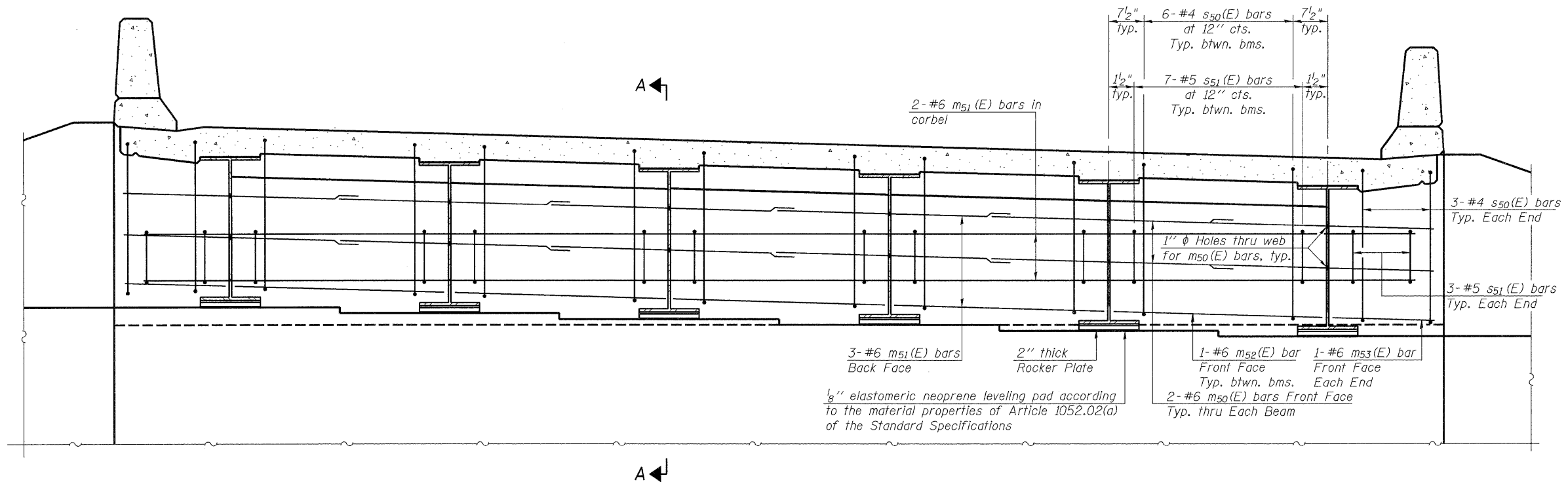
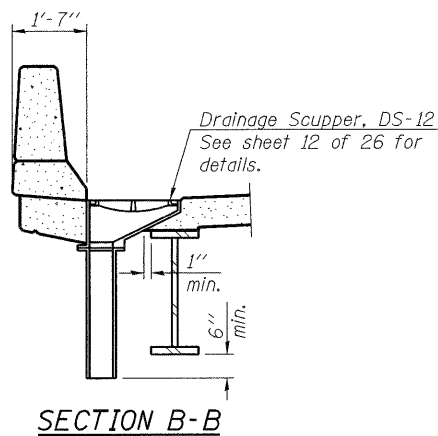


STATE OF ILLINOIS
DEPARTMENT OF TRANSPORTATION



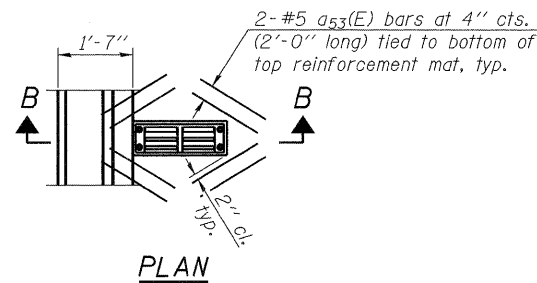
DIAPHRAGM ELEVATION AT ABUTMENT

Notes:
Reinforcement bars in diaphragm are billed with superstructure on sheet 10 of 26.
Concrete in diaphragm is included with Concrete Superstructure on sheet 10 of 26.
For details of bars $s^{50}(E)$ & $s^{51}(E)$ see sheet 10 of 26.

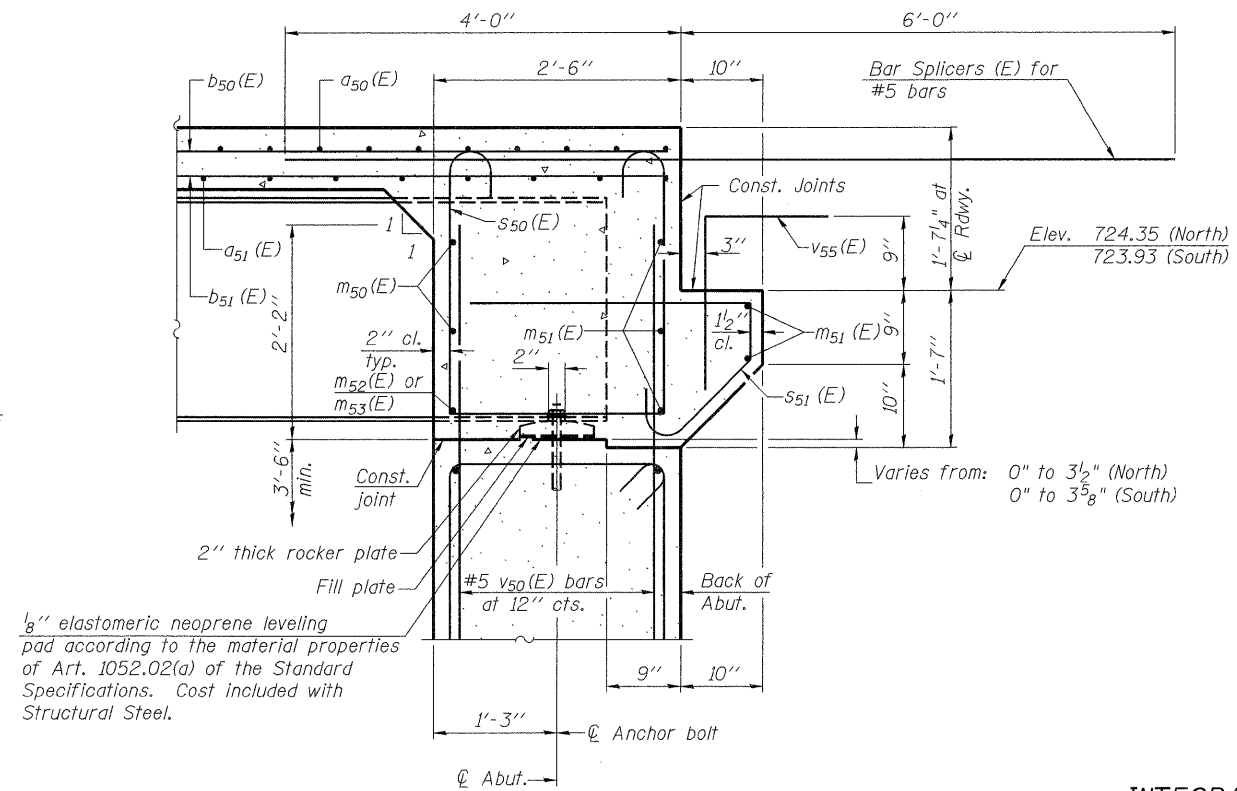


MIN. BAR LAP

#6 bar = 2'-9"



Note:
Cut longitudinal reinforcement to clear drainage scuppers.



SECTION A-A

INTEGRAL ABUTMENT DIAPHRAGM DETAILS
NORTHBOUND ILLINOIS ROUTE 394 OVER PLUM CREEK
STATION 20+07.55

DESIGNED	SK/GMK/LCM
CHECKED	GBC/GMK/SMK
DRAWN	RR/LCM/SK
CHECKED	GBC/GMK/SMK



SHEET NO. 11	F.A.P. RTE.	SECTION	COUNTY	TOTAL SHEETS	SHEET NO.
	332	2002-113R	WILL	242	156
26 SHEETS	SN-099-0147		CONTRACT NO. 62542		
	FED. ROAD DIST. NO. 1 ILLINOIS FED. AID PROJECT				