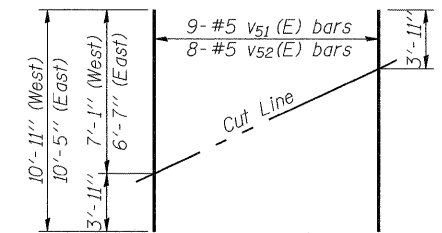
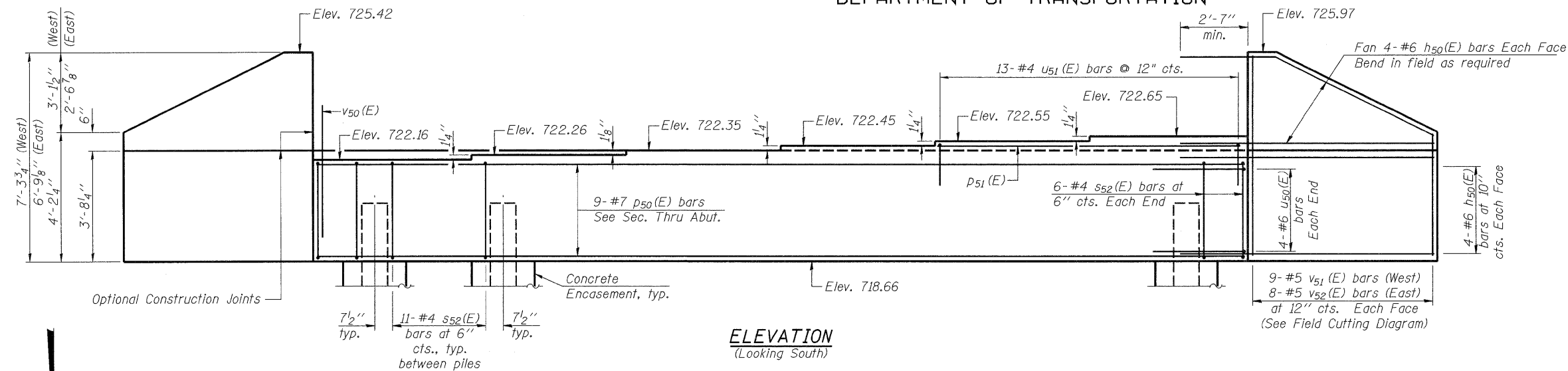
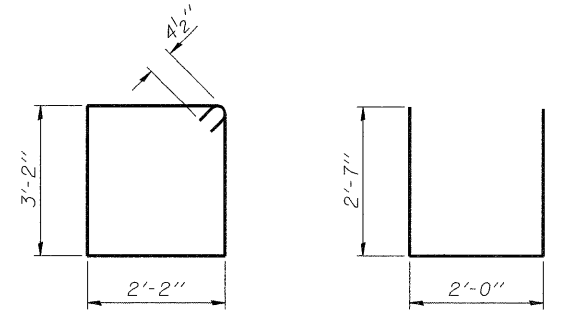


Notes:  
Pour steps monolithically with cap.

STATE OF ILLINOIS  
DEPARTMENT OF TRANSPORTATION



**FIELD CUTTING DIAGRAM**  
Order v51(E) and v52(E) full length. Cut as shown and use remainder of bars in opposite face.

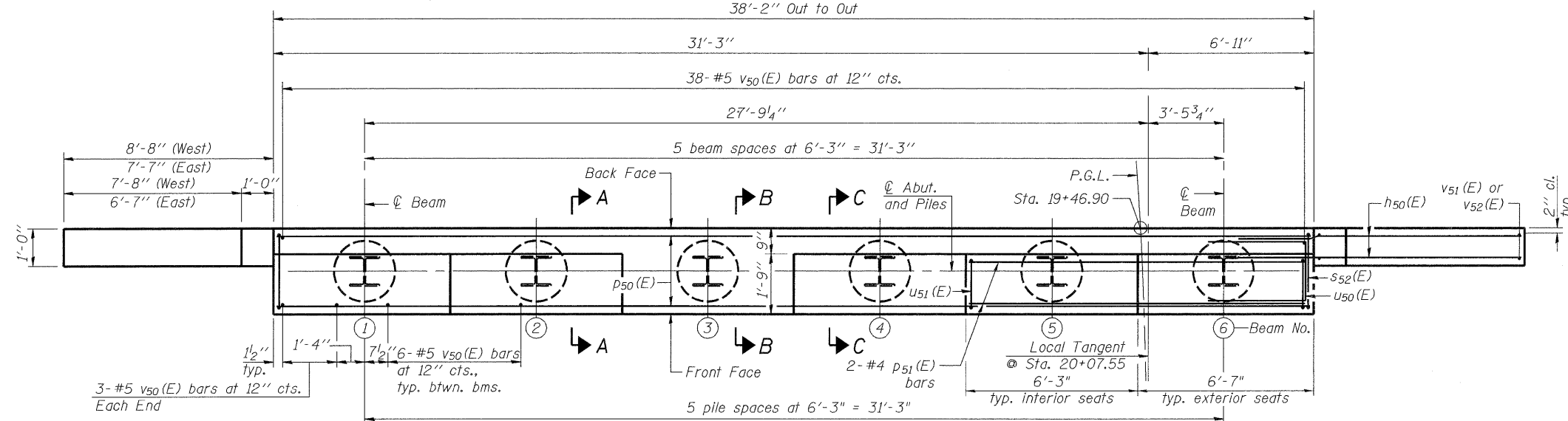


BAR s52(E)

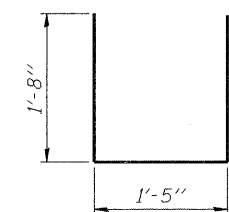
BAR u50(E)

**ELEVATION**  
(Looking South)

38'-2" Out to Out



**PLAN**



BAR u51(E)

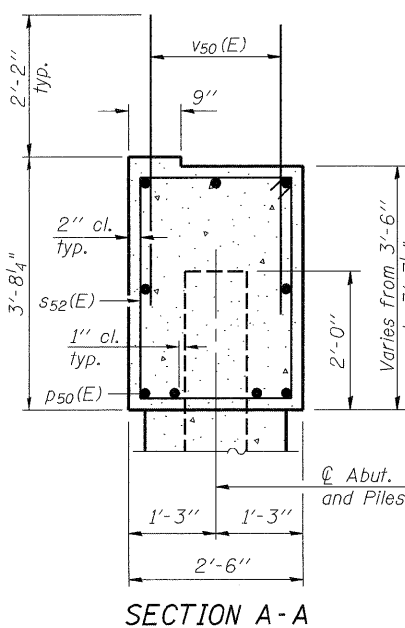
**BILL OF MATERIAL**

Bar	No.	Size	Length	Shape
h50(E)	32	#6	11'-9"	—
p50(E)	9	#7	37'-11"	—
p51(E)	2	#4	12'-7"	—
s52(E)	67	#4	11'-5"	□
u50(E)	8	#6	7'-2"	U
u51(E)	13	#4	4'-9"	U
v50(E)	74	#5	4'-4"	—
v51(E)	18	#5	10'-11"	—
v52(E)	16	#5	10'-5"	—
Structure Excavation		Cu. Yd.	40	
Concrete Structures		Cu. Yd.	17	
Reinforcement Bars, Epoxy Coated		Pound	2,680	
Furnishing Steel Piles HP10x42		Foot	145	
Driving Piles HP10x42		Foot	145	
Test Pile Steel HP10x42		Each	1	
Concrete Encasement		Cu. Yd.	2.1	

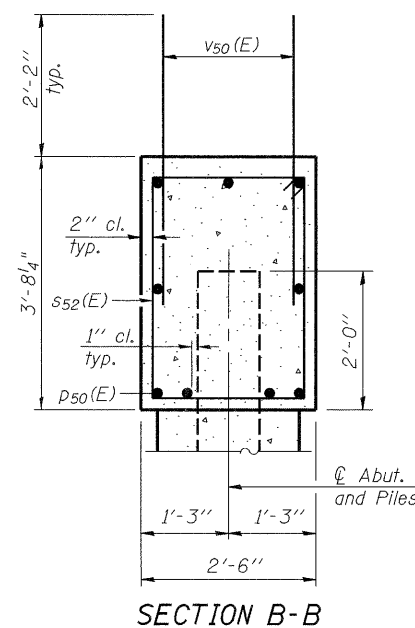
For details of Bar Splicers, see sheet 21 of 26.  
For details of piles and Concrete Encasement, see sheet 20 of 26.

**PILE DATA**

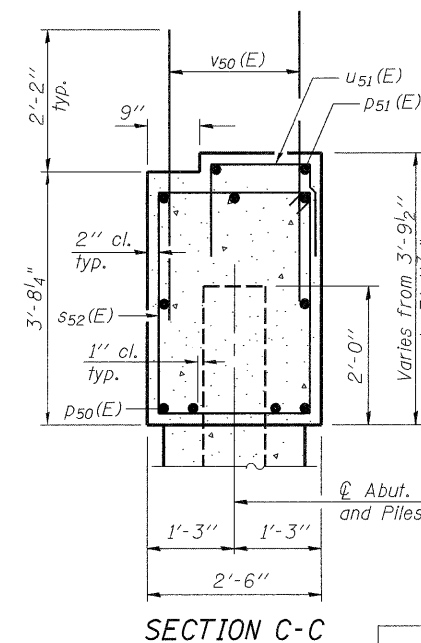
Type: HP 10 x 42  
Nominal Required Bearing: 180 kips  
Factored Resistance Available: 90 kips  
Est. Length: 29 feet  
No. Production Piles: 5  
No. Test Piles: 1



SECTION A-A



SECTION B-B



SECTION C-C

DESIGNED	SK/GMK/LCM
CHECKED	GBC/GMK/SMK
DRAWN	RR/LCM/SK
CHECKED	GBC/GMK/SMK

**SOUTH ABUTMENT**  
**NORTHBOUND ILLINOIS ROUTE 394 OVER PLUM CREEK**  
**STATION 20+07.55**

SHEET NO. 16	F.A.P. RTE.	SECTION	COUNTY	TOTAL SHEETS	SHEET NO.
	332	2002-113R	WILL	242	161
26 SHEETS	SN-099-0147		CONTRACT NO. 62542		
	FED. ROAD DIST. NO. 1 ILLINOIS FED. AID PROJECT				

