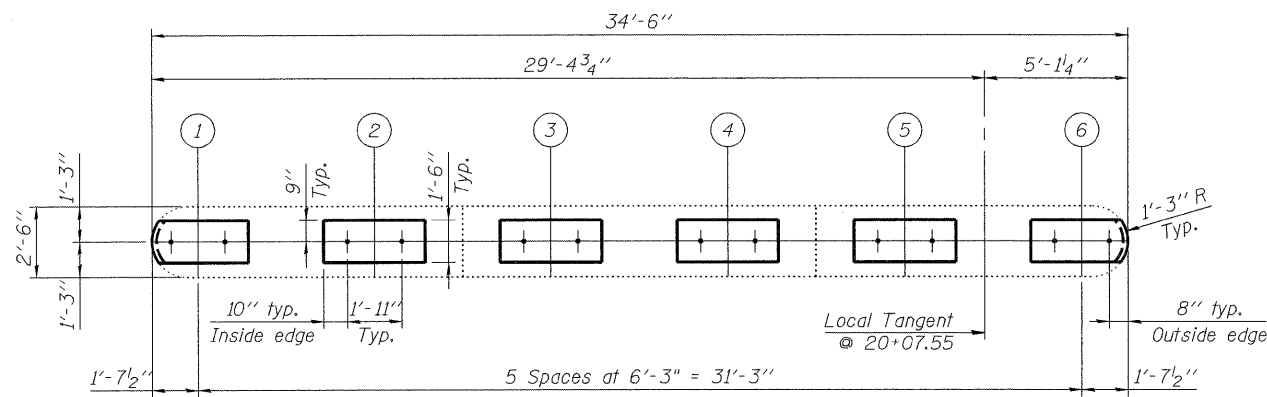
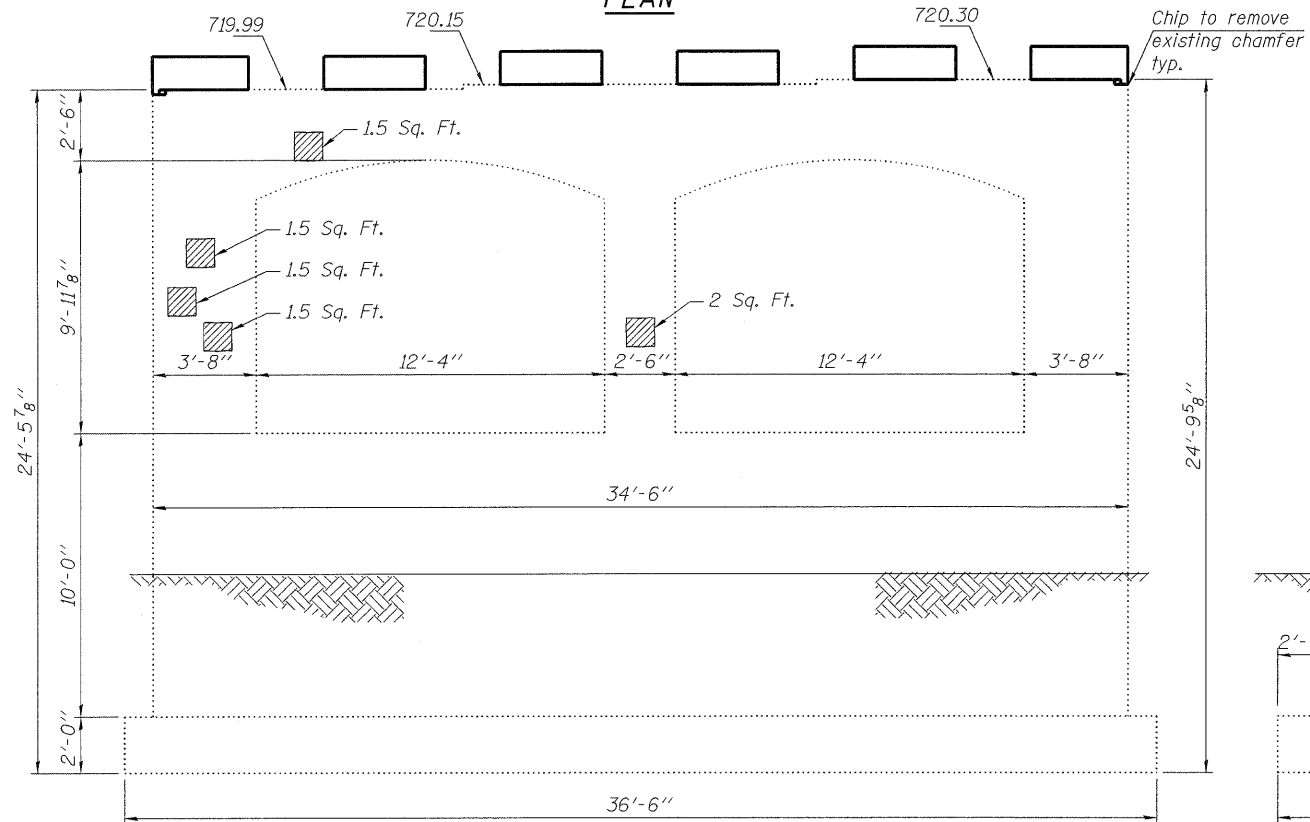


STATE OF ILLINOIS  
DEPARTMENT OF TRANSPORTATION

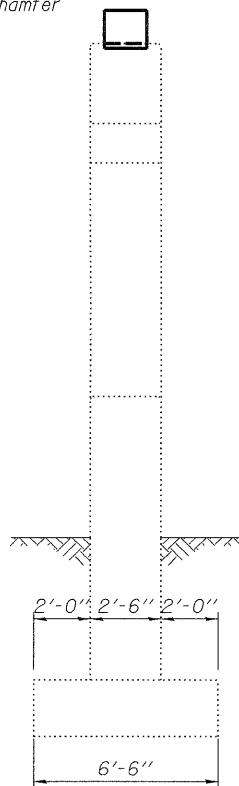


PLAN

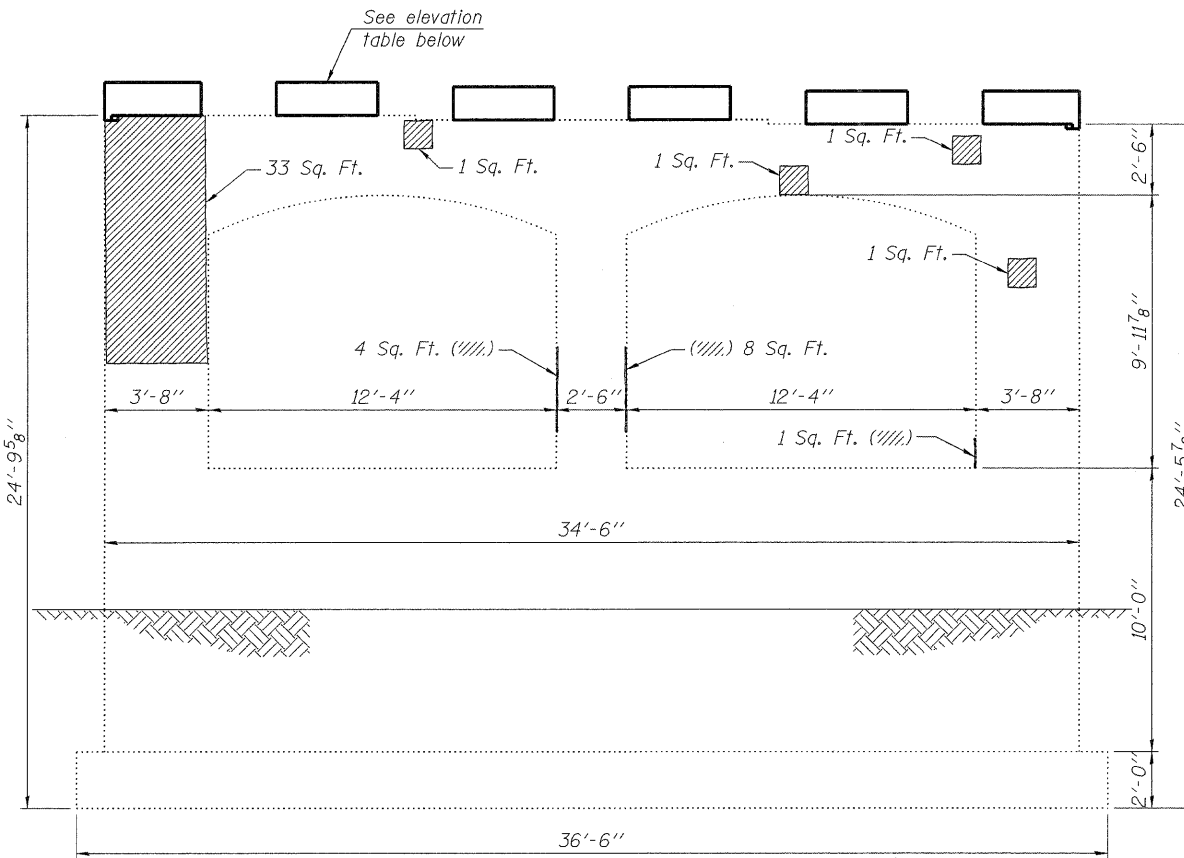


PIER #2  
(North Elevation)

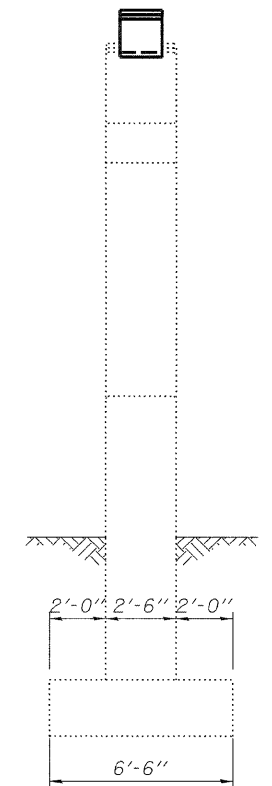
Note:  
All existing dimensions are to be verified  
in field.



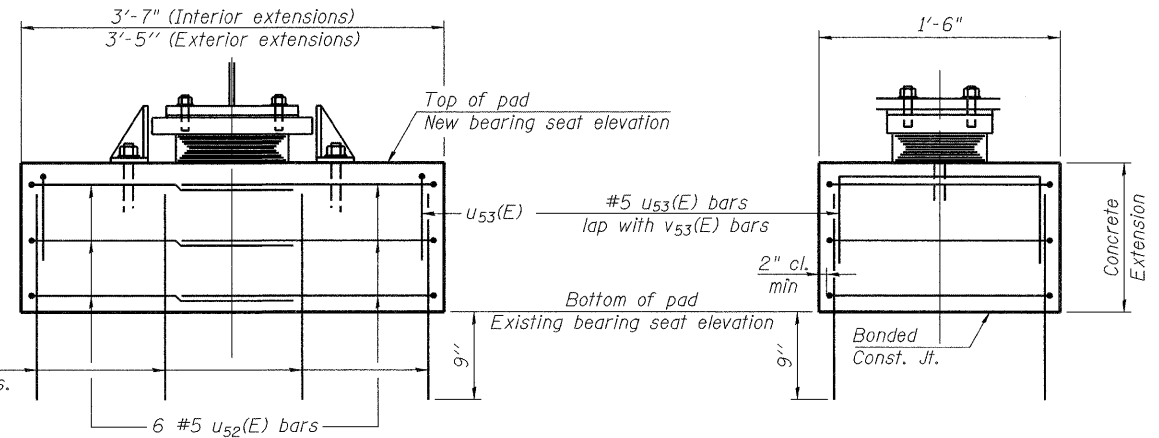
END VIEW  
(West Elevation)



PIER #2  
(South Elevation)



END VIEW  
(East Elevation)



BEARING PAD DETAILS

LEGEND:

Structural Repair of Concrete  
(Depth Equal to or Less than 5")

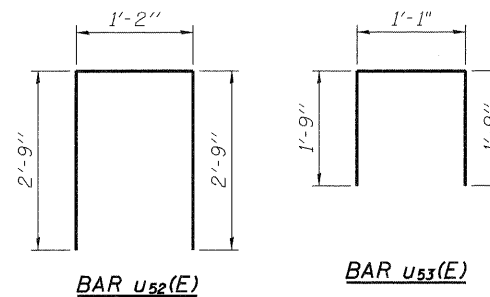
DESIGNED	SK/GMK/LCM
CHECKED	GBC/GMK/SMK
DRAWN	RR/LCM/SK
CHECKED	GBC/GMK/SMK

CONCRETE PAD ELEVATIONS

Location	Beam 1	Beam 2	Beam 3	Beam 4	Beam 5	Beam 6
Top Elev.	721.98	722.08	722.17	722.27	722.37	722.47

BILL OF MATERIAL

Bar	No.	Size	Length	Shape	
U52(E)	36	#5	6'-8"	□	
U53(E)	24	#5	4'-7"	□	
V53(E)	48	#5	2'-7"	—	
Reinforcement Bars, Epoxy Coated				Pound	450
Concrete Structures				Cu. Yd.	2.5
Structural Repair of Concrete (Depth Equal to or Less than 5")				Sq. Ft.	58



MINIMUM BAR LAP  
#5 Bar = 1'-7"

PIER 2 REPAIRS  
NORTHBOUND ILLINOIS ROUTE 394 OVER PLUM CREEK  
STATION 20+07.55

SHEET NO. 18 26 SHEETS	F.A.P. RTE.	SECTION	COUNTY	TOTAL SHEETS	SHEET NO.
	332	2002-113R	WILL	242	163
SN-099-0147			CONTRACT NO. 62542		
FED. ROAD DIST. NO. 1 ILLINOIS FED. AID PROJECT					

Delta Engineering, Inc.  
CONSULTING ENGINEERS, CONSTRUCTION MANAGERS, SURVEYORS  
111 N. Jackson Blvd., Suite 910 Chicago, IL 60604-2021