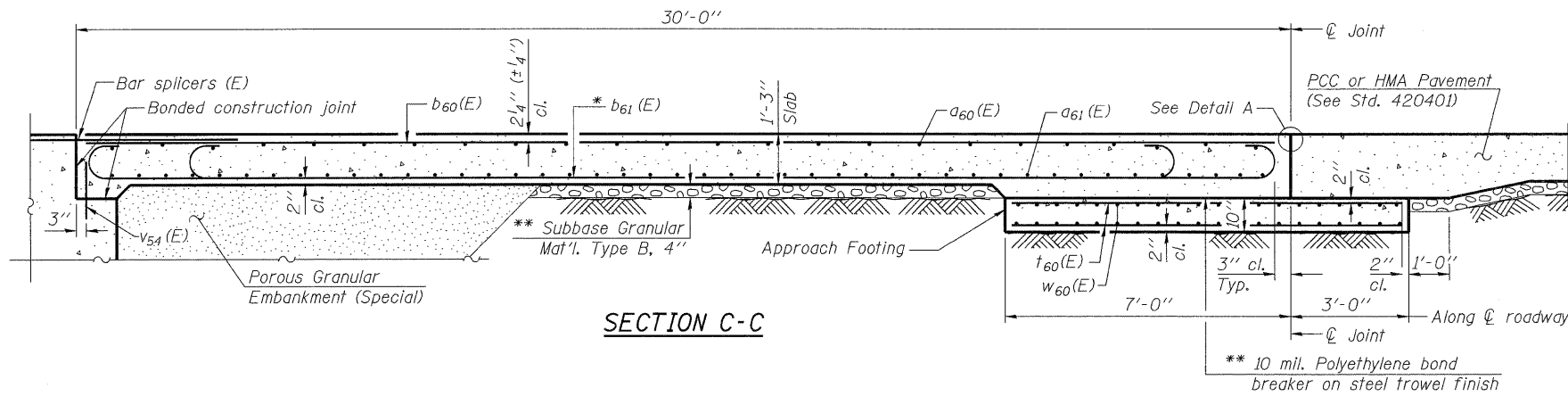


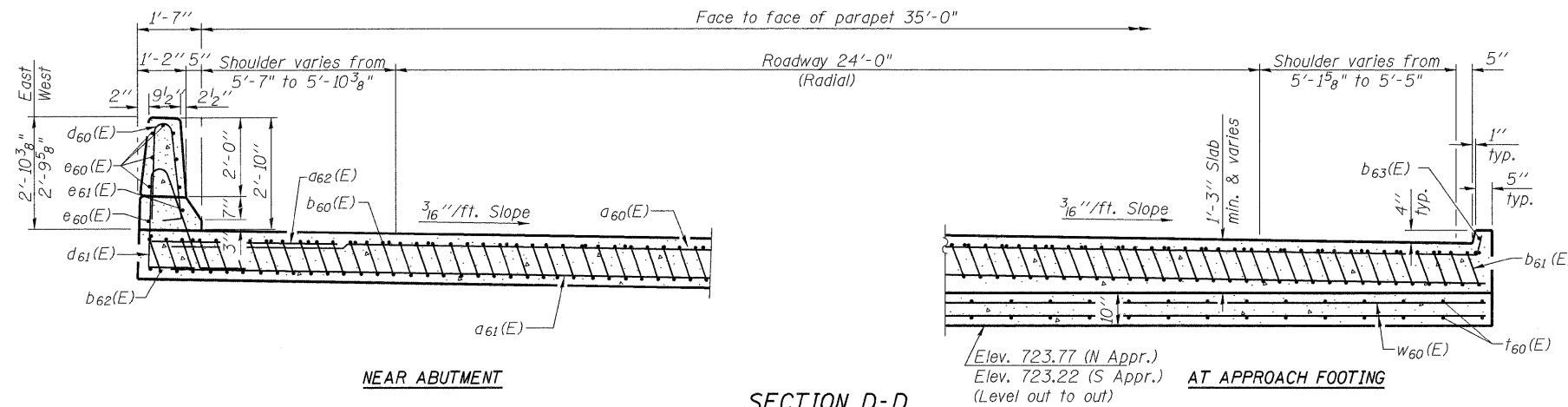
STATE OF ILLINOIS  
DEPARTMENT OF TRANSPORTATION

Notes:

See sheet 23 of 26 for Detail A and View B-B.  
Approach slab and parapet concrete shall be paid for as Concrete Superstructure.  
Approach footing concrete shall be paid for as Concrete Structures.  
Reinforcement shall be paid for as Reinforcement Bars, Epoxy Coated.  
For  $v_{54}(E)$  bar details, see sheet 10 of 26.  
The approach footing maximum applied service bearing pressure ( $Q_{max}$ ) = 2.0 ksf.  
For bar splicer details, see sheet 21 of 26.  
Cost of excavation for approach footing included with Concrete Structures.  
For Porous Granular Embankment (Special) and drainage treatment details, see sheet 2 of 26.



SECTION C-C



NEAR ABUTMENT

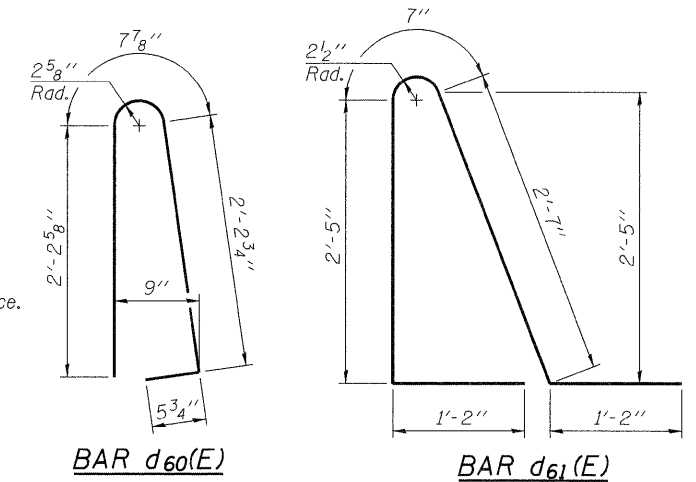
SECTION D-D

South Approach Shown Looking North. North Approach Similar, But Mirrored  
(See Plan for dimensions not shown)

AT APPROACH FOOTING

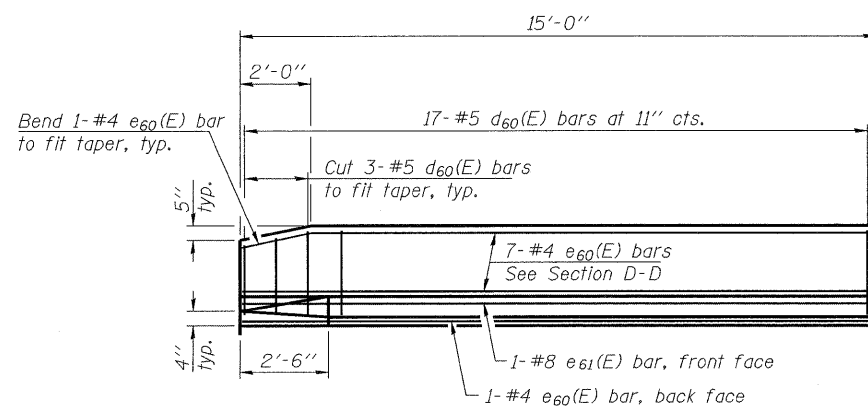
\* Tilt #9  $b_{61}(E)$  bars as required to maintain clearance.

\*\* Cost included with Concrete Superstructure.

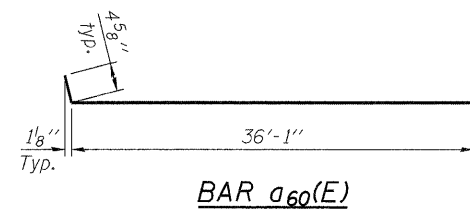


TWO APPROACHES  
BILL OF MATERIAL

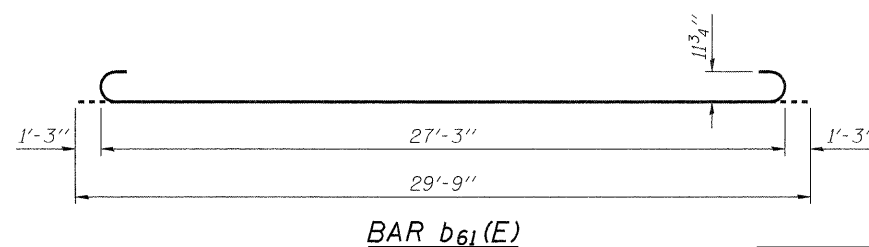
Bar	No.	Size	Length	Shape
$a_{60}(E)$	50	#4	36'-11"	—
$a_{61}(E)$	92	#5	36'-7"	—
$a_{62}(E)$	48	#6	6'-0"	—
$b_{60}(E)$	58	#4	29'-8"	—
$b_{61}(E)$	168	#9	29'-9"	—
$b_{62}(E)$	4	#4	14'-8"	—
$b_{63}(E)$	4	#4	14'-9"	—
$d_{60}(E)$	68	#5	5'-7"	U
$d_{61}(E)$	68	#5	7'-11"	U
$e_{60}(E)$	32	#4	14'-8"	—
$e_{61}(E)$	4	#8	14'-8"	—
$t_{60}(E)$	152	#4	9'-8"	—
$w_{60}(E)$	80	#5	36'-7"	—
Concrete Superstructure		Cu. Yd.	115	
Concrete Structures		Cu. Yd.	24	
Reinforcement Bars, Epoxy Coated		Pound	30,450	



VIEW E-E



BAR  $a_{60}(E)$



BAR  $b_{61}(E)$

DESIGNED	SK/GMK/LCM
CHECKED	GBC/GMK/SMK
DRAWN	RR/LCM/SK
CHECKED	GBC/GMK/SMK

BRIDGE APPROACH SLAB DETAILS-2  
NORTHBOUND ILLINOIS ROUTE 394 OVER PLUM CREEK  
STATION 20+07.55

SHEET NO. 24 26 SHEETS	F.A.P. RTE. 332	SECTION 2002-113R	COUNTY WILL	TOTAL SHEETS 242	SHEET NO. 169
	SN-099-0147		CONTRACT NO. 62542		
FED. ROAD DIST. NO. 1 ILLINOIS FED. AID PROJECT					