

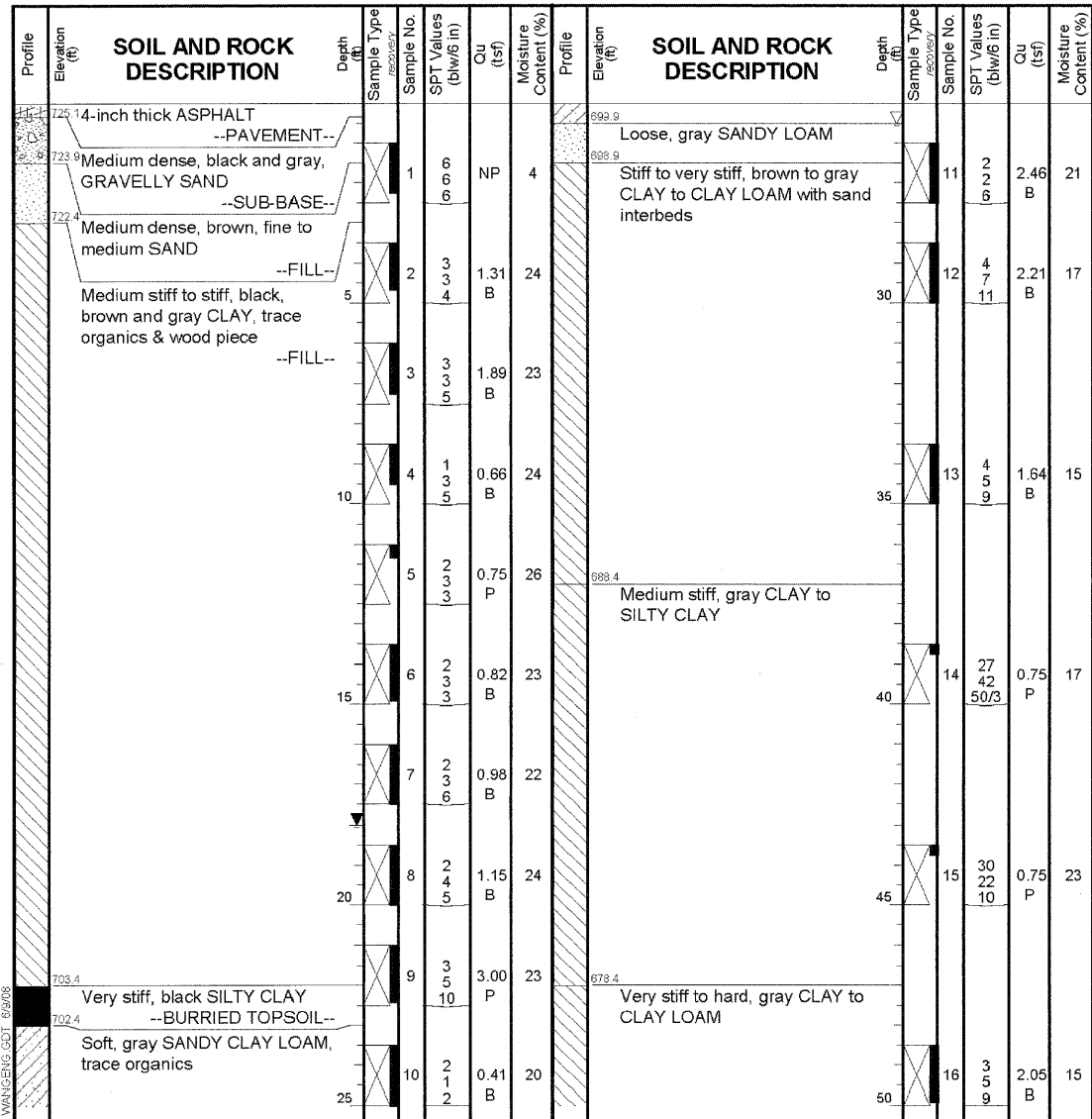
STATE OF ILLINOIS
DEPARTMENT OF TRANSPORTATION

Wang Engineering, INC.
Consulting Geotechnical and Environmental Engineers
wangeng3@wangeng.com
1145 Main Street
Lombard, IL 60148
Telephone: 630 953-9928
Fax: 630 953-9938

BORING LOG SB-1
WEI Job No.: 604-01-01
Client: **Delta Engineering, Inc.**
Project: **IL 394 NB over Plum Creek, Will County**
Location: **Sec. 33, T 34 N, R 14 E of Steger Quadrangle**

Datum: NGVD
Elevation: 725.42 ft
North: 1722131.57 ft
East: 1178204.32 ft
Station:
Offset:

Page 1 of 2



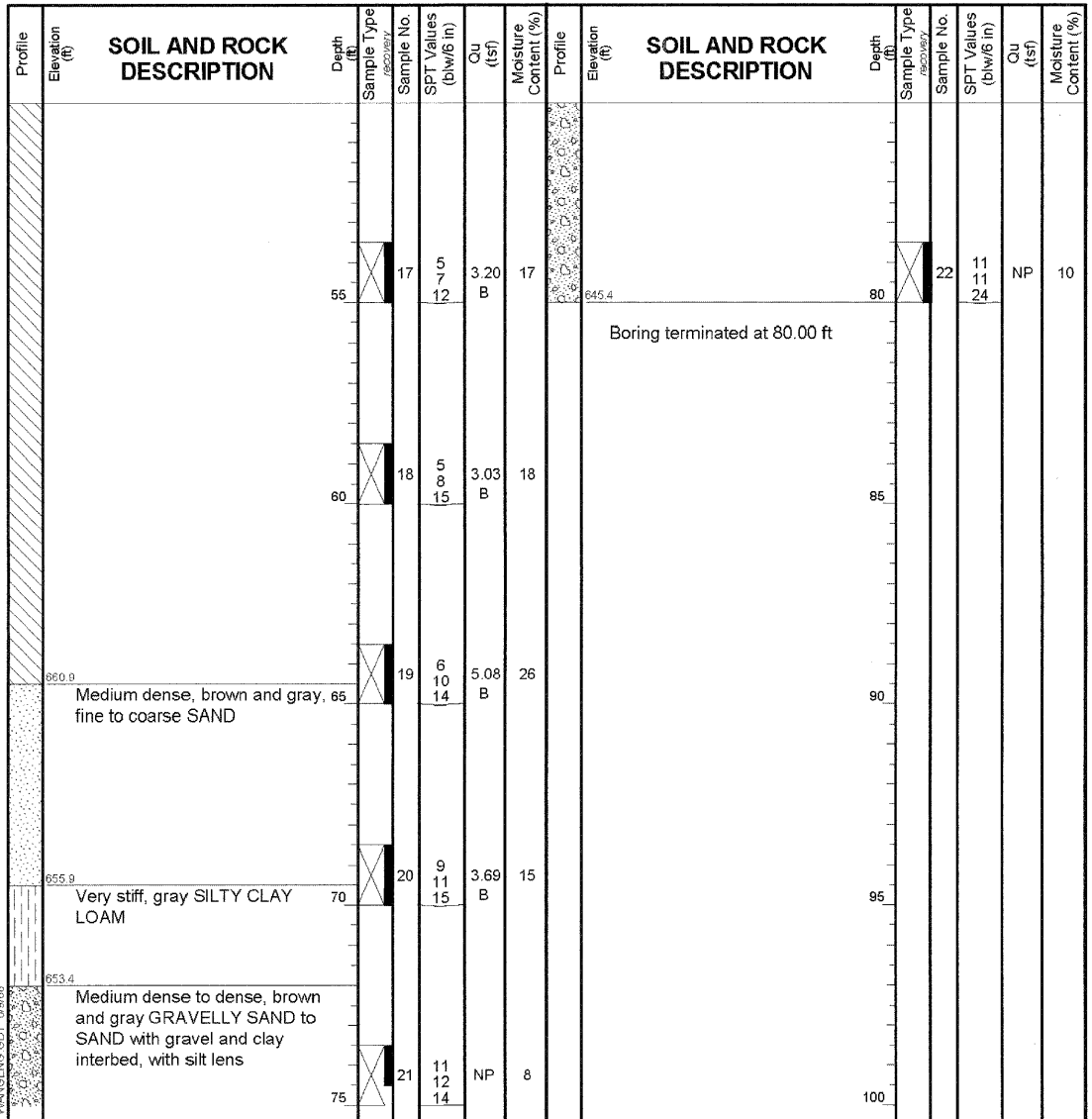
| GENERAL NOTES | | | | WATER LEVEL DATA | | | |
|---|---|-------------------|-------------------|---------------------------|------------|---------------------|----|
| Begin Drilling | 05-07-2008 | Complete Drilling | 05-07-2008 | While Drilling | ▽ | 25.50 ft | |
| Drilling Contractor | GBE | Drill Rig | Diedrich D-50 TMR | At Completion of Drilling | ▽ | 18.00 ft | |
| Driller | G & R | Logger | K. Jacob | Checked by | J. Kasnick | Time After Drilling | NA |
| Drilling Method | 2.25" ID HSA; Boring Backfilled Upon Completion | | | Depth to Water | ▽ | NA | |
| The stratification lines represent the approximate boundary between soil types; the actual transition may be gradual. | | | | | | | |

Wang Engineering, INC.
Consulting Geotechnical and Environmental Engineers
wangeng3@wangeng.com
1145 Main Street
Lombard, IL 60148
Telephone: 630 953-9928
Fax: 630 953-9938

BORING LOG SB-1
WEI Job No.: 604-01-01
Client: **Delta Engineering, Inc.**
Project: **IL 394 NB over Plum Creek, Will County**
Location: **Sec. 33, T 34 N, R 14 E of Steger Quadrangle**

Datum: NGVD
Elevation: 725.42 ft
North: 1722131.57 ft
East: 1178204.32 ft
Station:
Offset:

Page 2 of 2



| GENERAL NOTES | | | | WATER LEVEL DATA | | | |
|---|---|-------------------|-------------------|---------------------------|------------|---------------------|----|
| Begin Drilling | 05-07-2008 | Complete Drilling | 05-07-2008 | While Drilling | ▽ | 25.50 ft | |
| Drilling Contractor | GBE | Drill Rig | Diedrich D-50 TMR | At Completion of Drilling | ▽ | 18.00 ft | |
| Driller | G & R | Logger | K. Jacob | Checked by | J. Kasnick | Time After Drilling | NA |
| Drilling Method | 2.25" ID HSA; Boring Backfilled Upon Completion | | | Depth to Water | ▽ | NA | |
| The stratification lines represent the approximate boundary between soil types; the actual transition may be gradual. | | | | | | | |

DESIGNED SK/GMK/LCM
CHECKED GBC/GMK/SMK
DRAWN RR/LCM/SK
CHECKED GBC/GMK/SMK

SOIL BORING LOGS-1
NORTHBOUND ILLINOIS ROUTE 394 OVER PLUM CREEK
STATION 20+07.55

| | | | | | |
|---|-------------|-----------|--------------------|--------------|-----------|
| SHEET NO. 25 | F.A.P. RTE. | SECTION | COUNTY | TOTAL SHEETS | SHEET NO. |
| | 332 | 2002-113R | WILL | 242 | 170 |
| 26 SHEETS | SN-099-0147 | | CONTRACT NO. 62542 | | |
| FED. ROAD DIST. NO. 1 ILLINOIS FED. AID PROJECT | | | | | |

