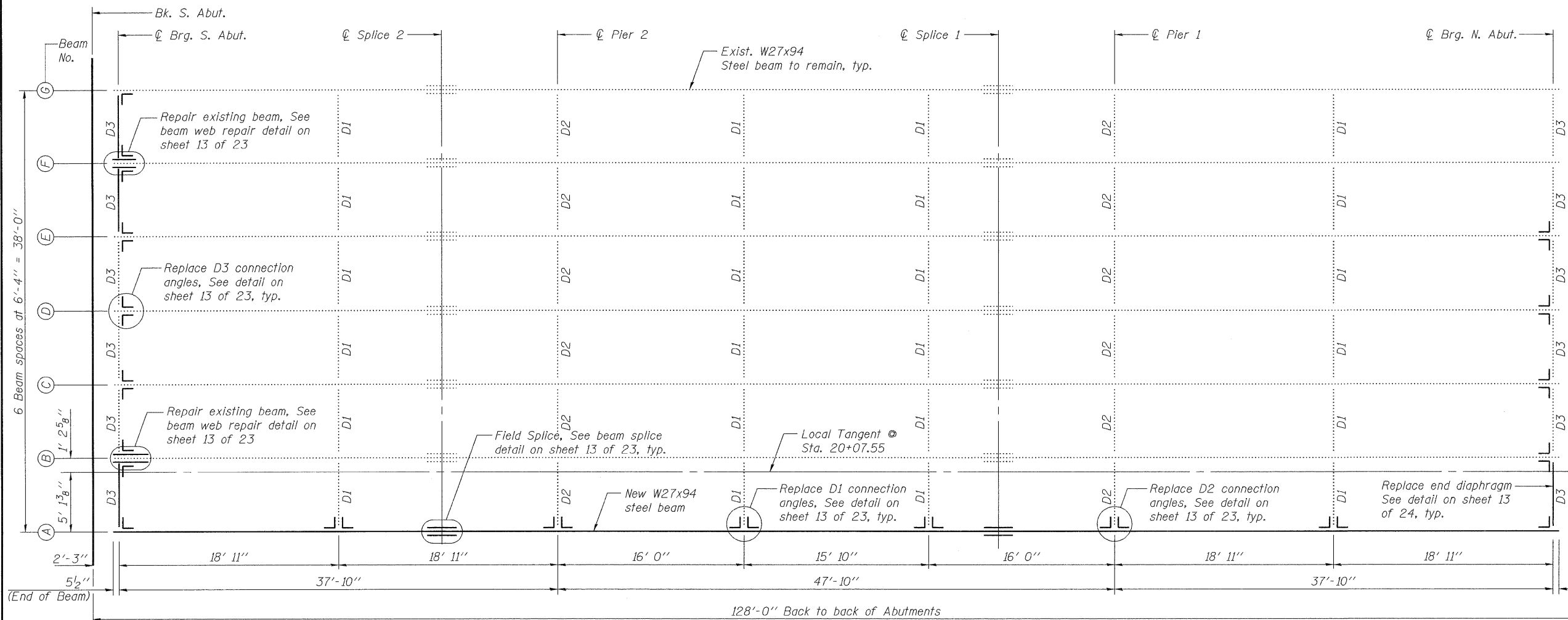
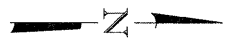
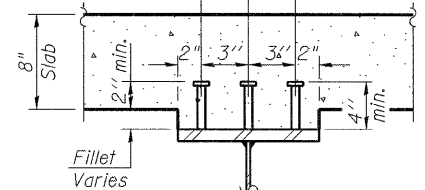


STATE OF ILLINOIS
DEPARTMENT OF TRANSPORTATION



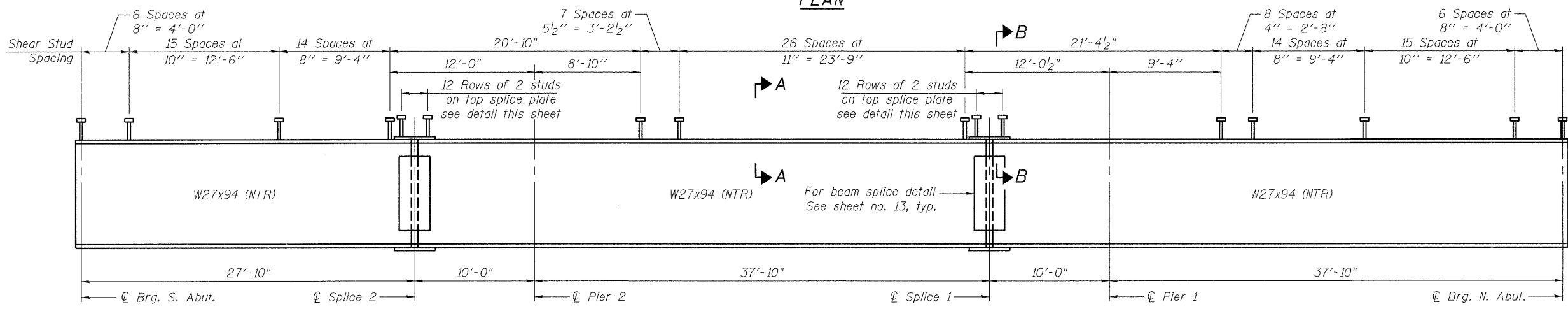
NOTES:

- All diaphragms shall be installed as steel is erected and secured with erection pins and bolts except as otherwise noted. Individual diaphragms at supports may be temporarily disconnected to install bearing anchor rods.
 - Load carrying components designated "NTR" shall conform to the Supplemental Requirements for Notch Toughness, Zone 2.
 - Removal of existing Beam "A" and bearings under Beam "A" are paid for as "Structural Steel Removal". Bearings shall be removed according to existing bearing removal detail on sheet 15 of 24.
- 3/4" φ Granular or solid flux filled headed studs, automatically end welded to flange.
(No. Req'd. = 342 Per Existing Beam)
(No. Req'd. = 342 Per New Beam)
Total = 2394

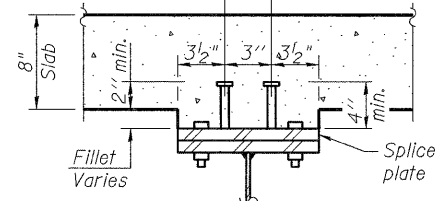


SECTION A-A

PLAN



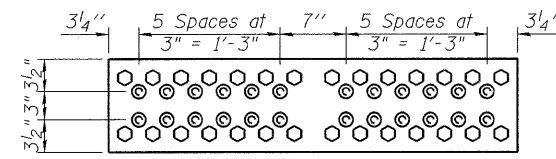
3/4" φ Granular or solid flux filled headed studs, automatically end welded to splice plate.
(No. Req'd. = 48 Per Existing Beam)
(No. Req'd. = 48 Per New Beam)
Total = 336



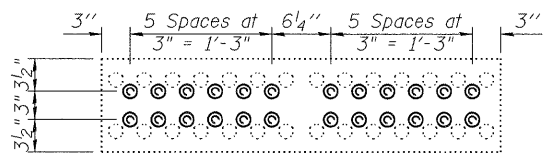
SECTION B-B

ELEVATION

(Beam A shown. Stud spacing applies to all beams.)



TOP SPLICE PLATE SHEAR STUD
SPACING BEAM A



TOP SPLICE PLATE SHEAR STUD
SPACING BEAMS B-G

DESIGNED	SK/GMK/LCM
CHECKED	GBC/GMK/SMK
DRAWN	RR/LCM/SK
CHECKED	GBC/GMK/SMK

FRAMING PLAN
SOUTHBOUND ILLINOIS ROUTE 394 OVER PLUM CREEK
STATION 20+07.55

SHEET NO. 12 23 SHEETS	F.A.P. RTE. 332	SECTION 2002-113R	COUNTY WILL	TOTAL SHEETS 242	SHEET NO. 183
	SN-099-0183		CONTRACT NO. 62542		
FED. ROAD DIST. NO. 1 ILLINOIS FED. AID PROJECT					

