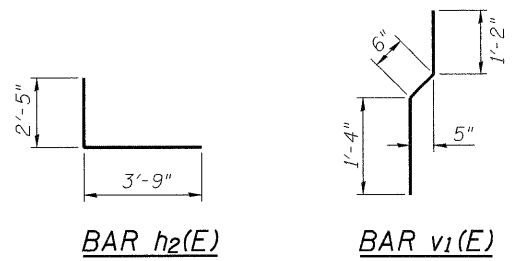


STATE OF ILLINOIS
DEPARTMENT OF TRANSPORTATION

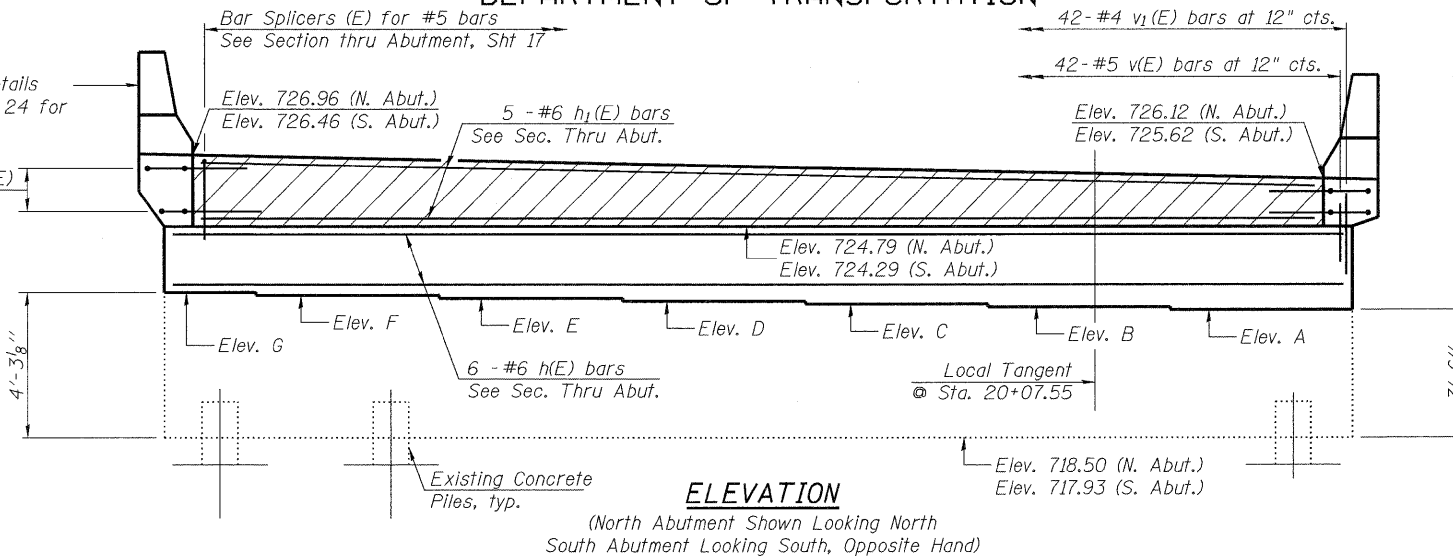


BEAM SEAT
ELEVATION TABLE

Location	North Abutment	South Abutment
A	722.00	721.43
B	722.13	721.56
C	722.26	721.68
D	722.38	721.81
E	722.51	721.94
F	722.64	722.06
G	722.76	722.19

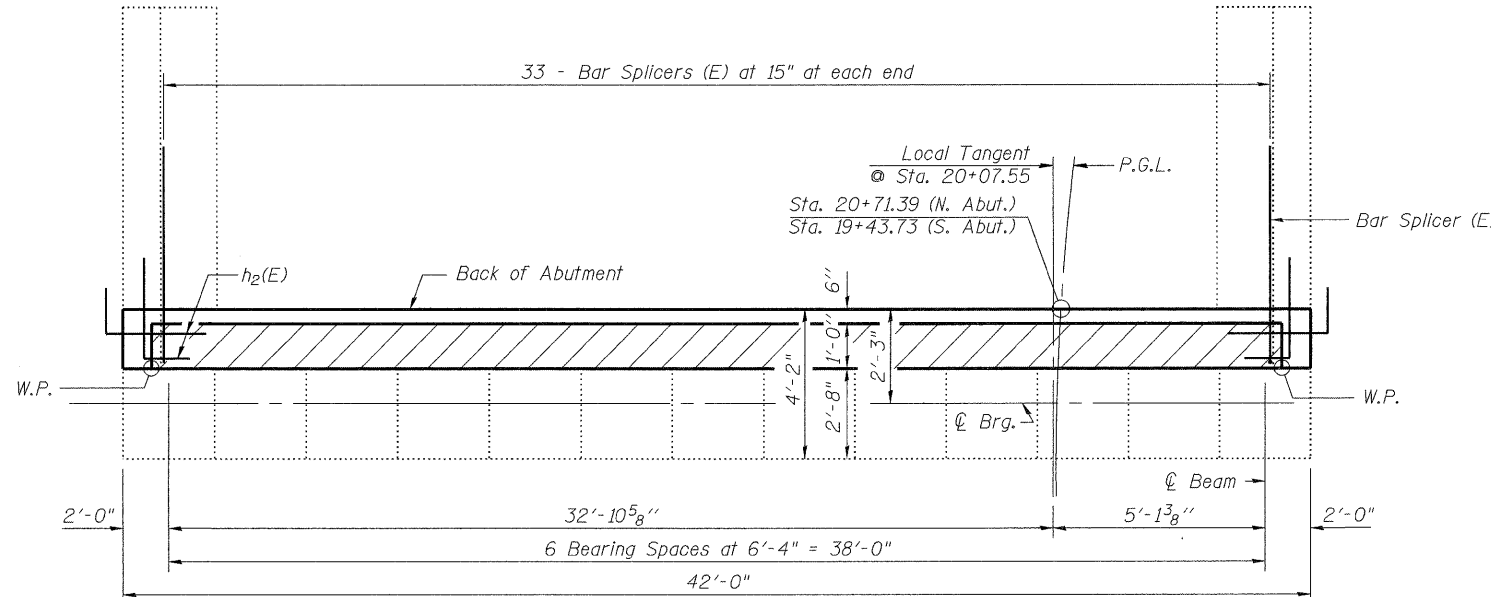
See Approach Slab details sheets 23 and 24 of 24 for Parapet Details

2-pairs #5 h₂(E) bars Ea. End



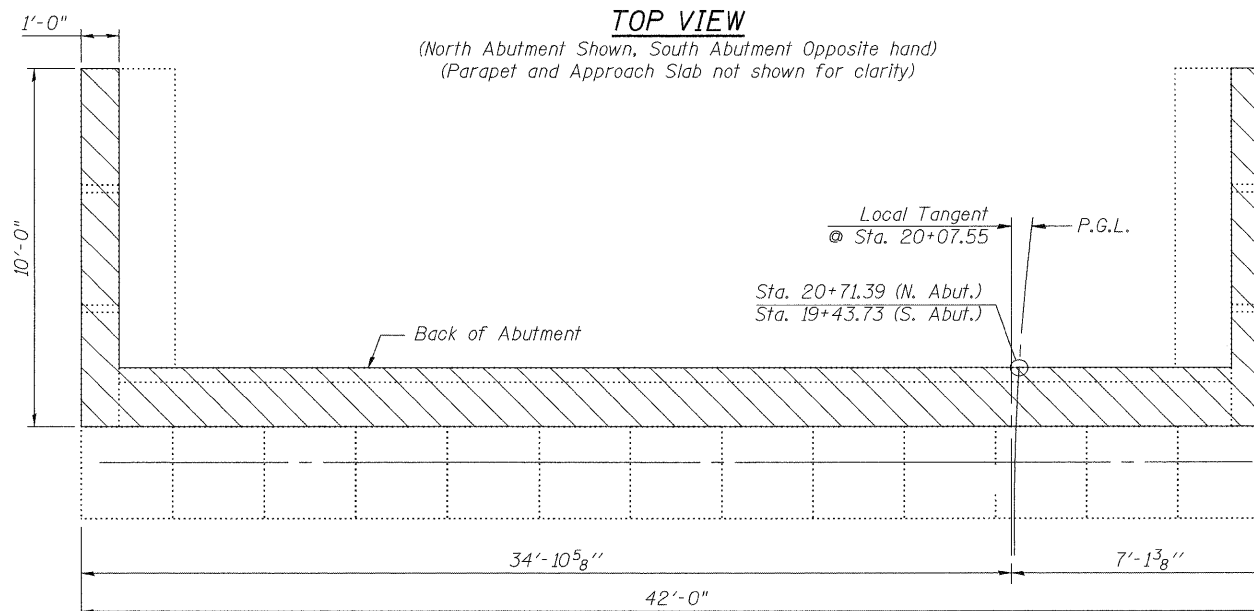
ELEVATION

(North Abutment Shown Looking North
South Abutment Looking South, Opposite Hand)



TOP VIEW

(North Abutment Shown, South Abutment Opposite hand)
(Parapet and Approach Slab not shown for clarity)



CONCRETE REMOVAL PLAN

(North Abutment Shown, South Abutment Opposite hand)

NORTH & SOUTH ABUTMENT
BILL OF MATERIAL

Bar	No.	Size	Length	Shape
h(E)	12	#6	41'-9"	—
h ₁ (E)	10	#6	40'-1"	—
h ₂ (E)	16	#5	6'-2"	L
v(E)	84	#5	3'-1"	—
v ₁ (E)	84	#4	3'-0"	—
Concrete Removal		Cu. Yd.	23	
Concrete Structures		Cu. Yd.	17	
Bar Splicers		Each	66	
Concrete Sealer		Sq. Ft.	475	
Reinforcement Bars, Epoxy Coated		Pound	1,940	

Note:
For details of Bar Splicers, see sheet 20 of 23.

LEGEND

- Existing Concrete
- Concrete Removal
- New Concrete
- Area of Backwall to be constructed after removal of formwork for Superstructure

NORTH AND SOUTH ABUTMENT
SOUTHBOUND ILLINOIS ROUTE 394 OVER PLUM CREEK
STATION 20+07.55

DESIGNED	SK/GMK/LCM
CHECKED	GBC/GMK/SMK
DRAWN	RR/LCM/SK
CHECKED	GBC/GMK/SMK

SHEET NO. 16	F.A.P. RTE.	SECTION	COUNTY	TOTAL SHEETS	SHEET NO.
	332	2002-113R	WILL	242	187
23 SHEETS	SN-099-0183		CONTRACT NO. 62542		
FED. ROAD DIST. NO. 1 ILLINOIS FED. AID PROJECT					

