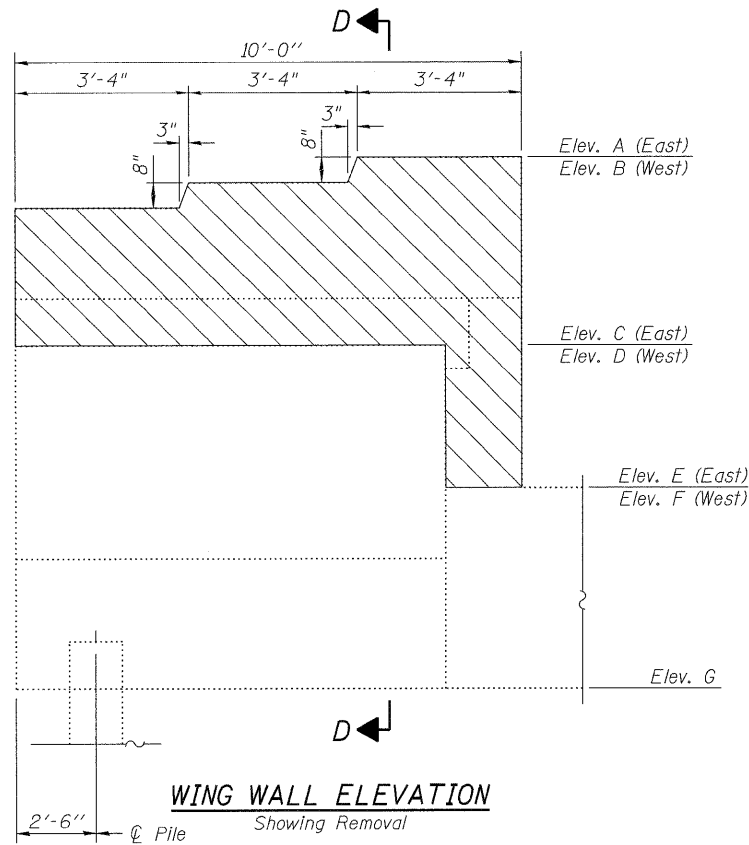


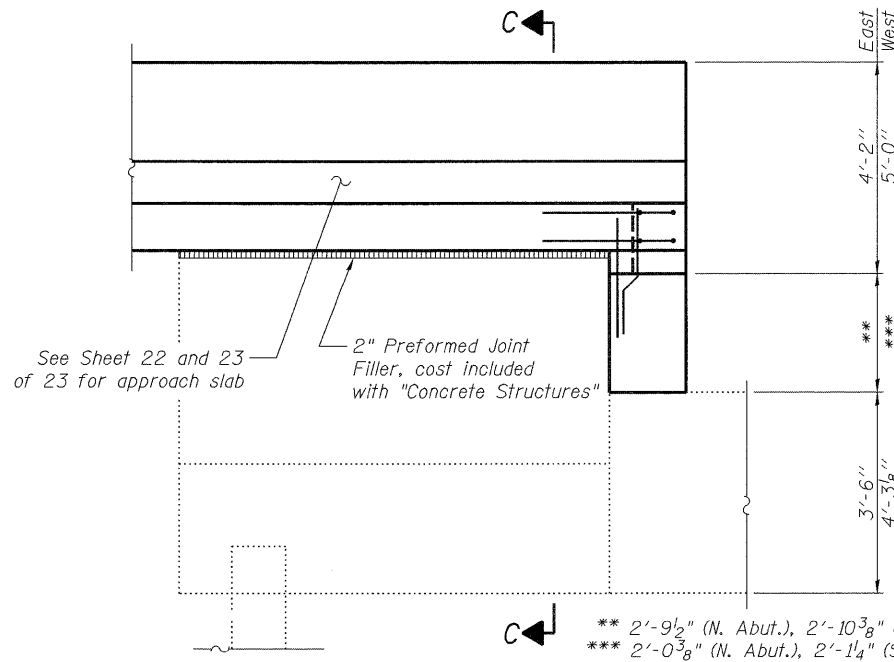
STATE OF ILLINOIS
DEPARTMENT OF TRANSPORTATION

WING WALL
ELEVATION TABLE

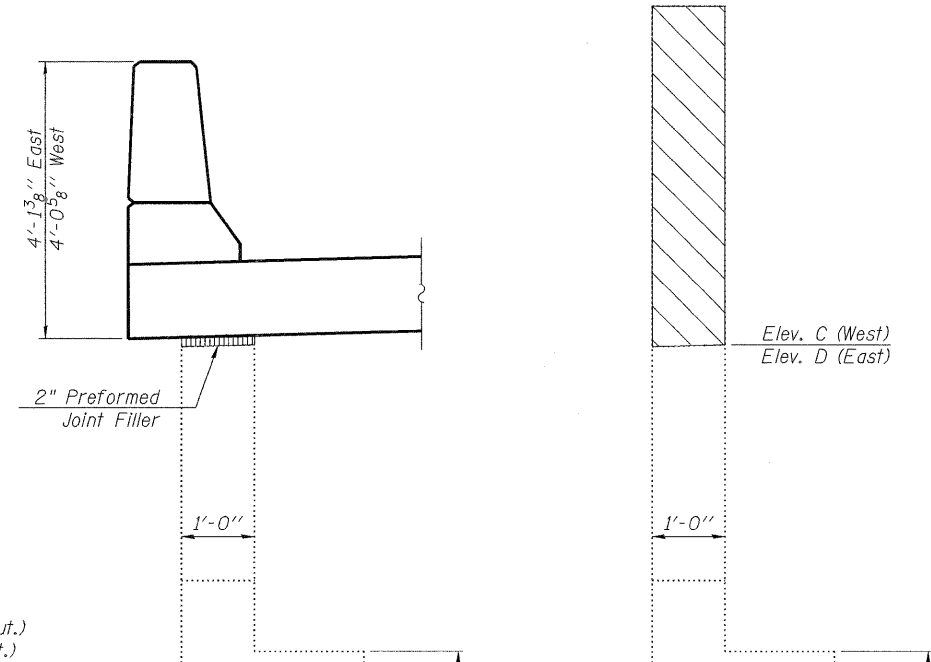
Location	North Abut.	South Abut.
A	729.66	729.07
B	730.46	729.87
C	724.70	724.20
D	725.54	725.04
E	722.00	721.43
F	722.76	722.19
G	718.50	717.93



WING WALL ELEVATION
Showing Removal



WING WALL ELEVATION
Showing Reinforcement



SECTION C-C

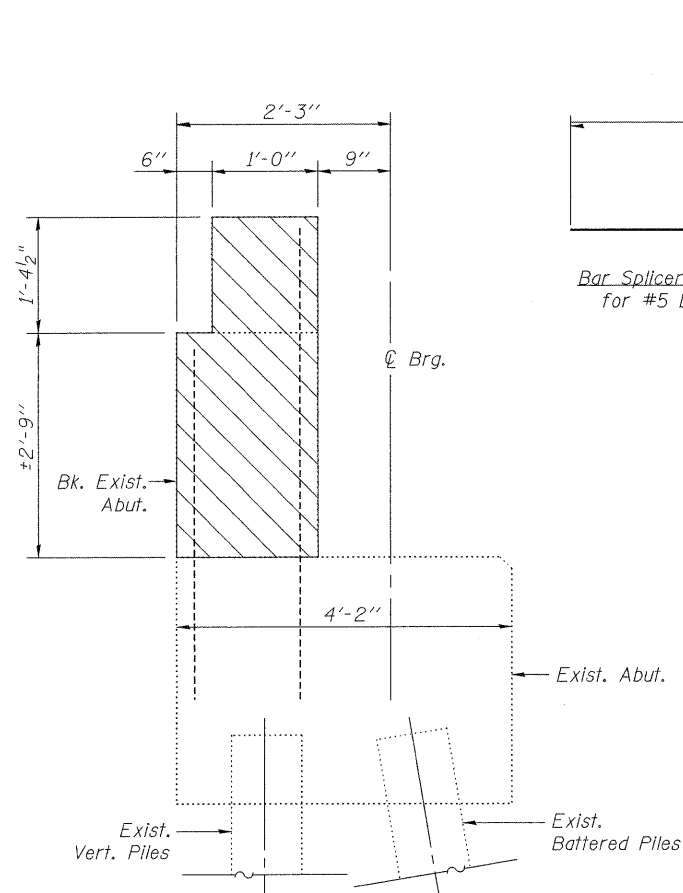
SECTION D-D

LEGEND

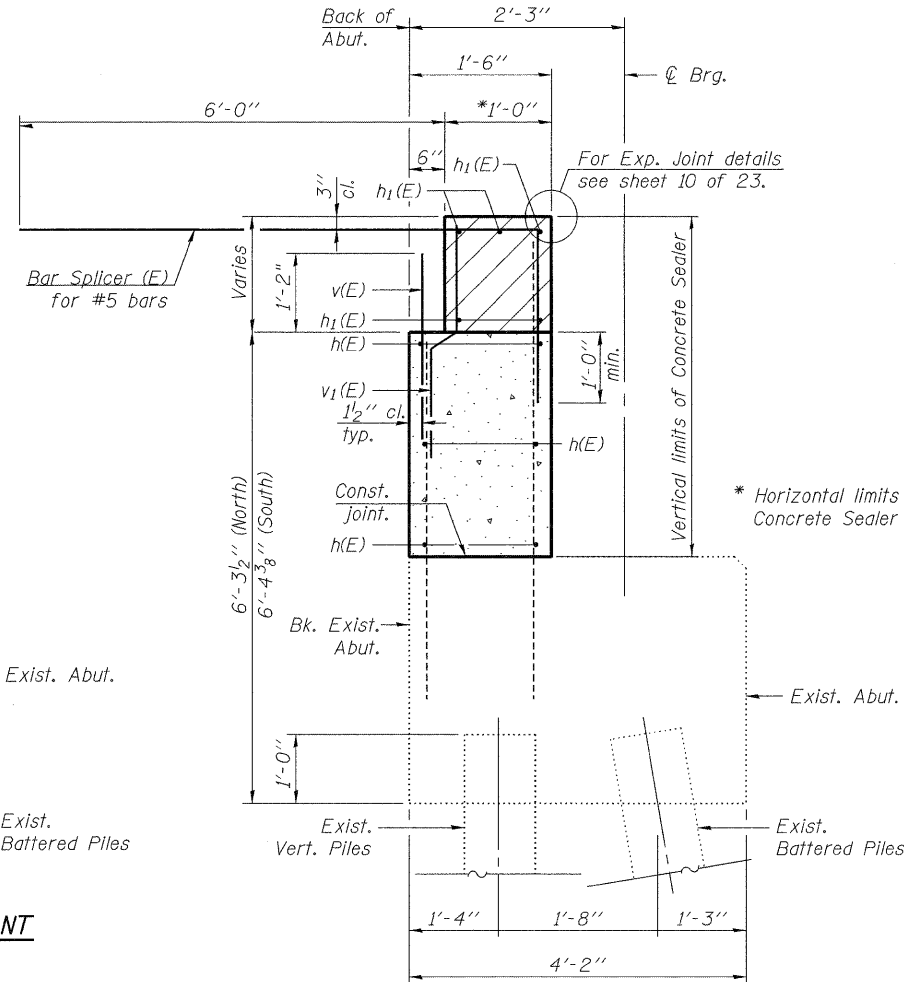
- Existing Concrete
- Concrete Removal
- New Concrete
- Area of Backwall to be constructed after removal of formwork for Superstructure

NOTES:

- Hatched area to be poured after superstructure false work has been removed. Quantity of concrete included with Concrete Structures. See Sheet 16 of 23.
- Existing reinforcement shall be cleaned and incorporated into the new construction. Any damaged existing reinforcement shall be replaced by drilling and grouting dowels. Cost included with Concrete Removal.



SECTION THRU EXISTING ABUTMENT
Showing Removal



SECTION THRU ABUTMENT
Showing Reinforcement

DESIGNED	SK/GMK/LCM
CHECKED	GBC/GMK/SMK
DRAWN	RR/LCM/SK
CHECKED	GBC/GMK/SMK

NORTH AND SOUTH ABUTMENT DETAILS
SOUTHBOUND ILLINOIS ROUTE 394 OVER PLUM CREEK
STATION 20+07.55

SHEET NO. 17	F.A.P. RTE.	SECTION	COUNTY	TOTAL SHEETS	SHEET NO.
	332	2002-113R	WILL	242	188
23 SHEETS	SN-099-0183		CONTRACT NO. 62542		
FED. ROAD DIST. NO. 1		ILLINOIS	FED. AID PROJECT		