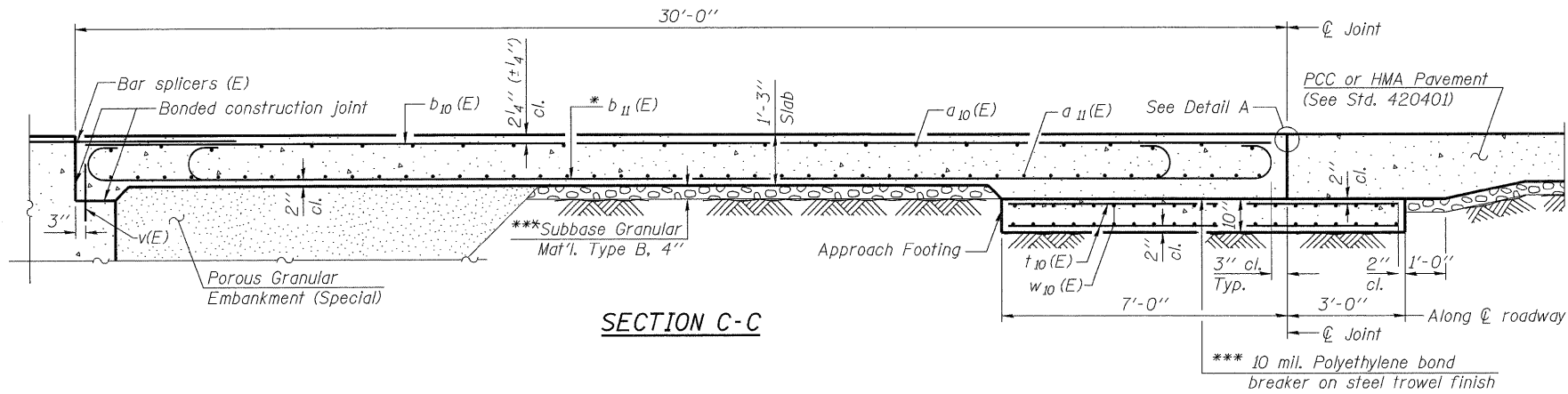


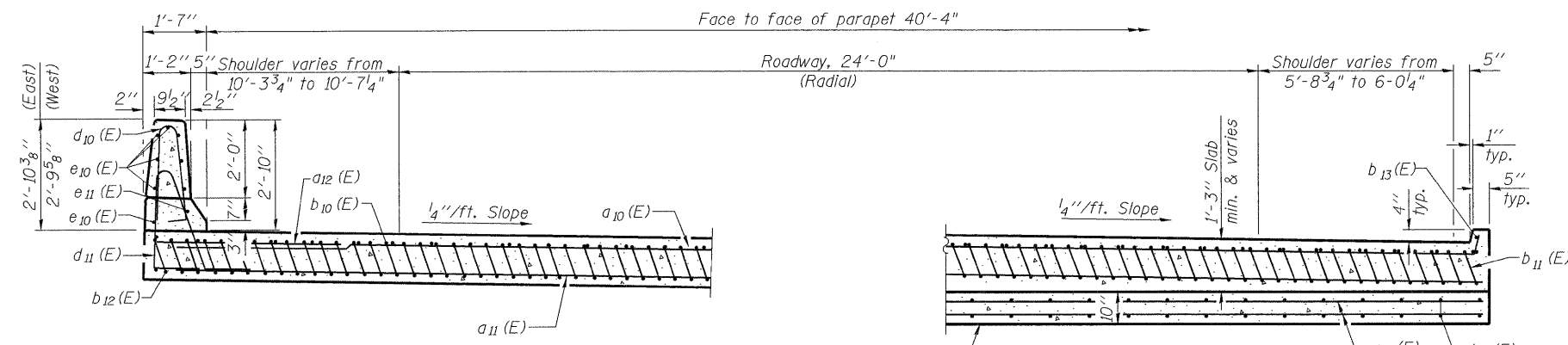
STATE OF ILLINOIS
DEPARTMENT OF TRANSPORTATION

Notes:

See sheet 22 of 23 for Detail A and View B-B.
Approach slab and parapet concrete shall be paid for as Concrete Superstructure.
Approach footing concrete shall be paid for as Concrete Structures.
Reinforcement shall be paid for as Reinforcement Bars, Epoxy Coated.
For v(E) bar details, see sheet 16 of 23.
The approach footing maximum applied service bearing pressure (Omax) = 2.0 ksf.
For bar splicer details, see sheet 20 of 23.
Cost of excavation for approach footing included with Concrete Structures.
For Porous Granular Embankment (Special) and drainage treatment details, see sheet 2 of 23.

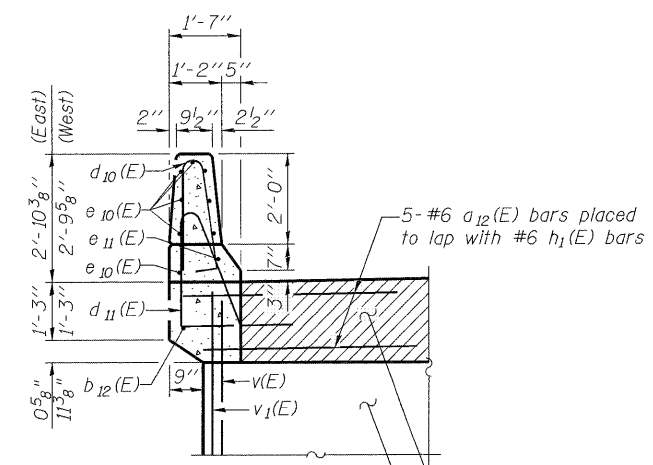


SECTION C-C

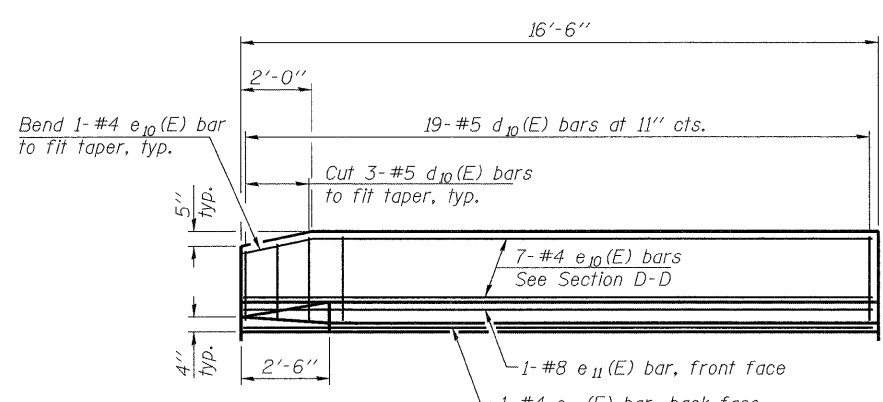


SECTION D-D

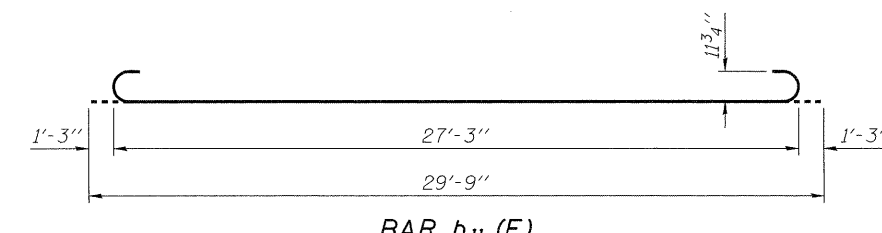
South Approach Looking North. North Approach Similar, But Mirrored.
(See Plan for dimensions not shown)



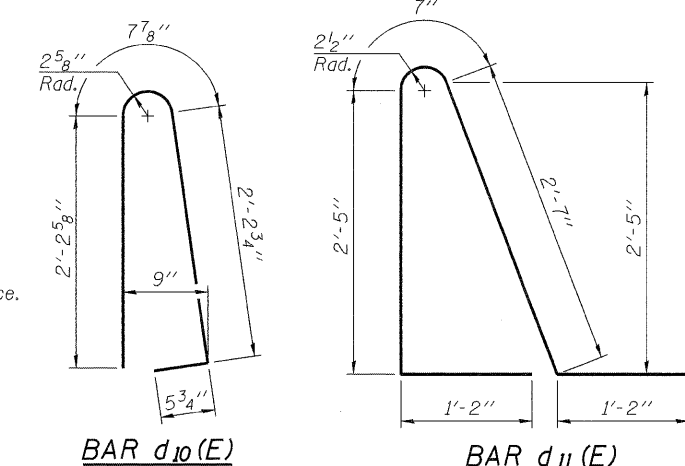
SECTION G-G



VIEW E-E



BAR b11(E)



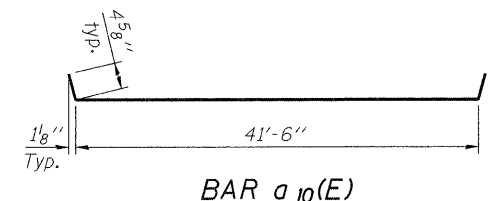
BAR d10(E)

BAR d11(E)

* Tilt #9 b11(E) bars as required to maintain clearance.
*** Cost included with Concrete Superstructure.

TWO APPROACHES
BILL OF MATERIAL

| Bar | No. | Size | Length | Shape |
|----------------------------------|-----|---------|---------|-------|
| a10(E) | 50 | #4 | 42'-3" | — |
| a11(E) | 92 | #5 | 41'-11" | — |
| a12(E) | 68 | #6 | 6'-0" | — |
| b10(E) | 66 | #4 | 29'-9" | — |
| b11(E) | 192 | #9 | 29'-9" | — |
| b12(E) | 4 | #4 | 16'-3" | — |
| b13(E) | 4 | #4 | 14'-9" | — |
| d10(E) | 76 | #5 | 5'-7" | ⌒ |
| d11(E) | 76 | #5 | 7'-11" | ⌒ |
| e10(E) | 32 | #4 | 16'-3" | — |
| e11(E) | 4 | #8 | 16'-3" | — |
| t10(E) | 172 | #4 | 9'-8" | — |
| w10(E) | 80 | #5 | 41'-11" | — |
| Concrete Superstructure | | Cu. Yd. | 131 | |
| Concrete Structures | | Cu. Yd. | 27 | |
| Reinforcement Bars, Epoxy Coated | | Pound | 33,720 | |



BAR a10(E)

BRIDGE APPROACH SLAB DETAILS-2
SOUTHBOUND ILLINOIS ROUTE 394 OVER PLUM CREEK
STATION 20+07.55

| | |
|----------|-------------|
| DESIGNED | SK/GMK/LCM |
| CHECKED | GBC/GMK/SMK |
| DRAWN | RR/LCM/SK |
| CHECKED | GBC/GMK/SMK |

BA-0 10-31-08



| | | | | | |
|---|--------------------|----------------------|--------------------|---------------------|------------------|
| SHEET NO. 23 23 SHEETS | F.A.P. RTE. 332 | SECTION 2002-113R | COUNTY WILL | TOTAL SHEETS 242 | SHEET NO. 194 |
| | SN-099-0183 | | CONTRACT NO. 62542 | | |
| FED. ROAD DIST. NO. 1 ILLINOIS FED. AID PROJECT | | | | | |