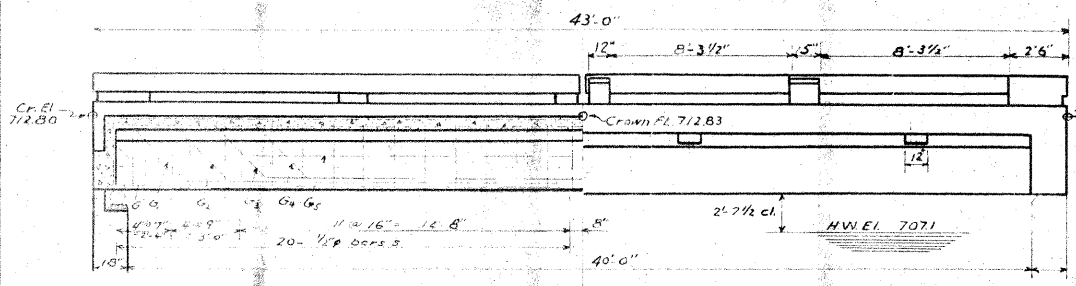


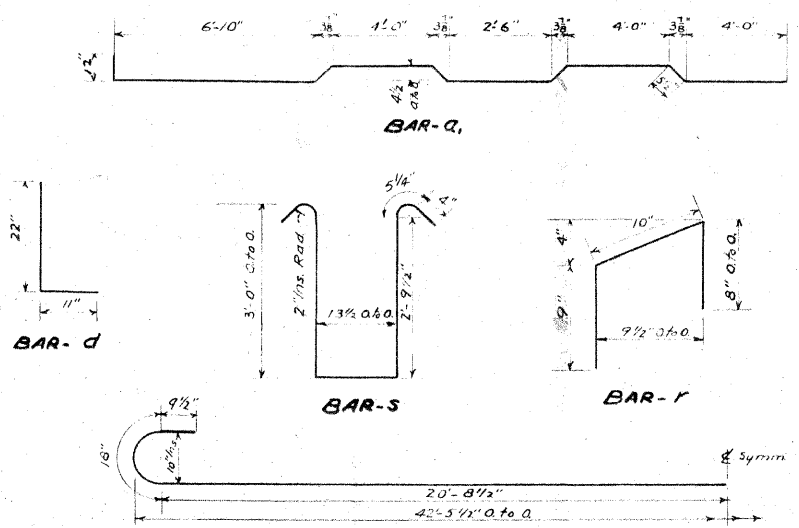
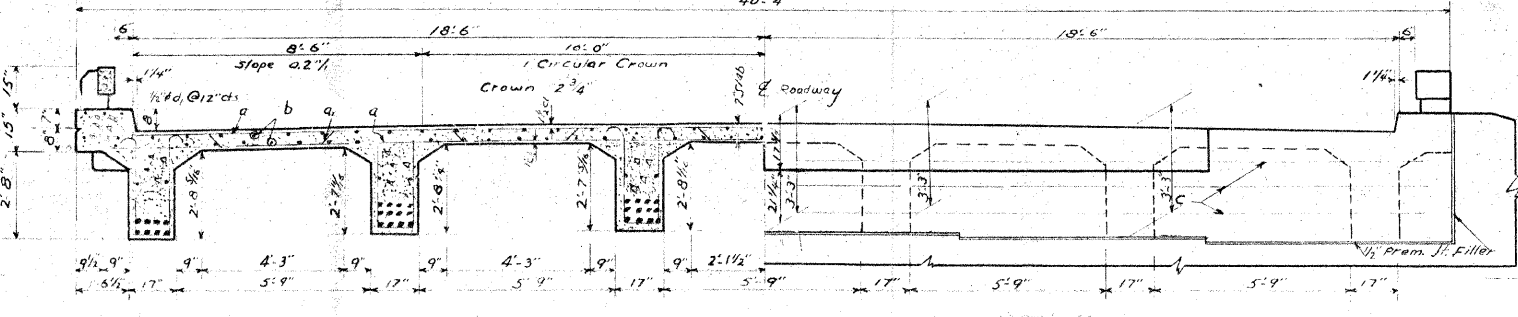
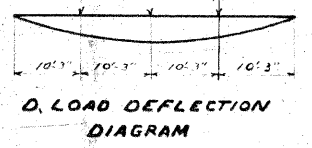
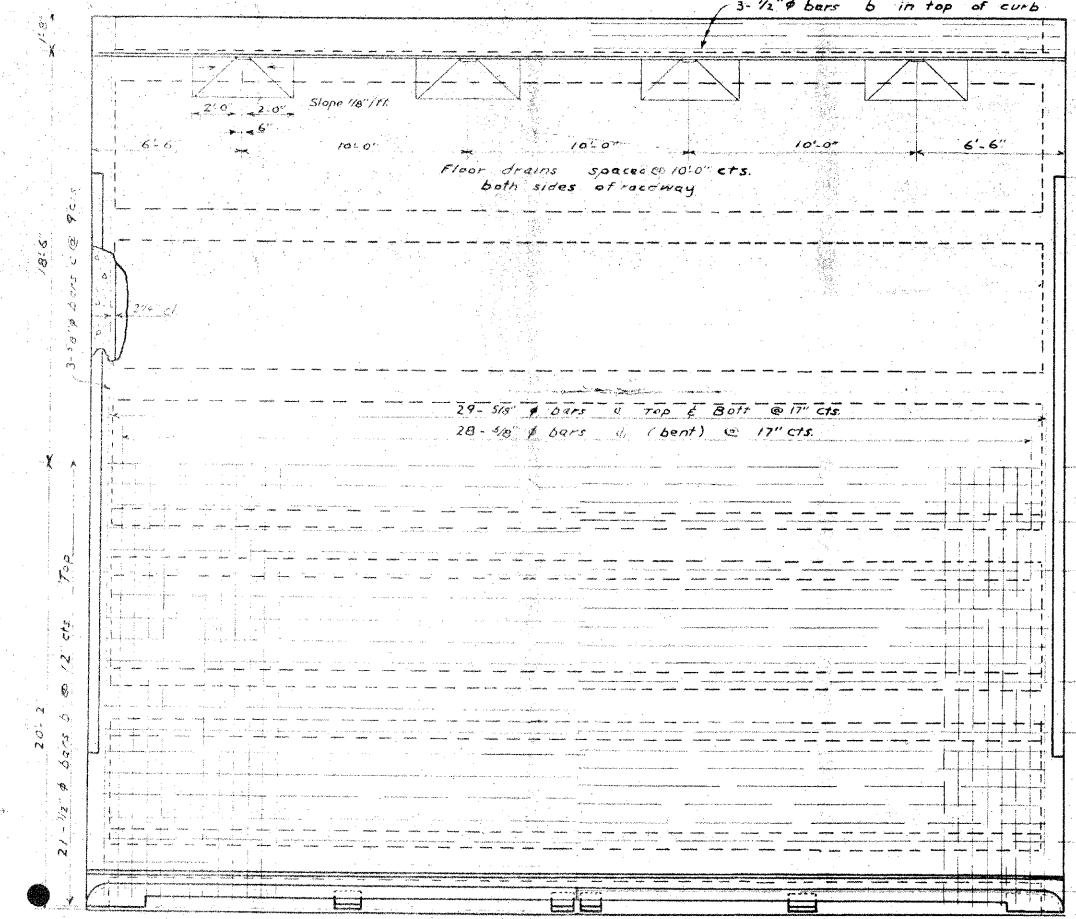
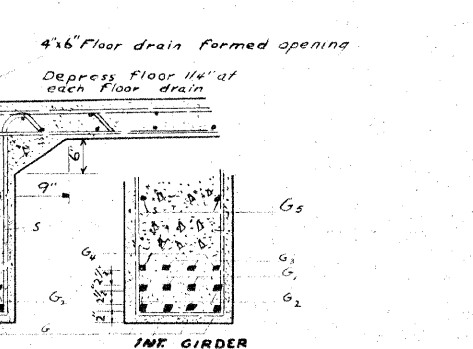
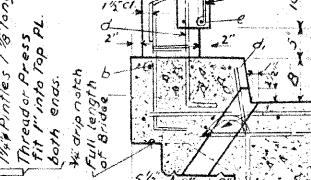
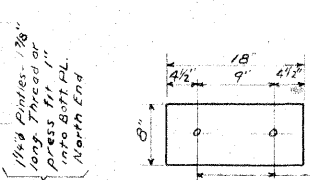
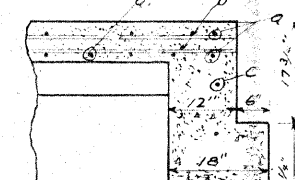
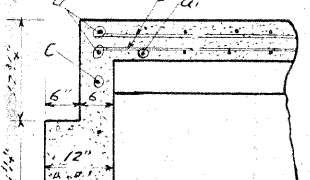
PLAN 75 a cut in top of S.E. wing wall of bridge at Sta. 221.75 to 221.75

STATE OF ILLINOIS  
DEPARTMENT OF PUBLIC WORKS & BUILDINGS  
DIVISION OF HIGHWAYS

62544  
Sheet 194A  
SHEET NO. 1  
2 SHEETS



Note: For Handrail Detail see Standard 2070R Type 3C



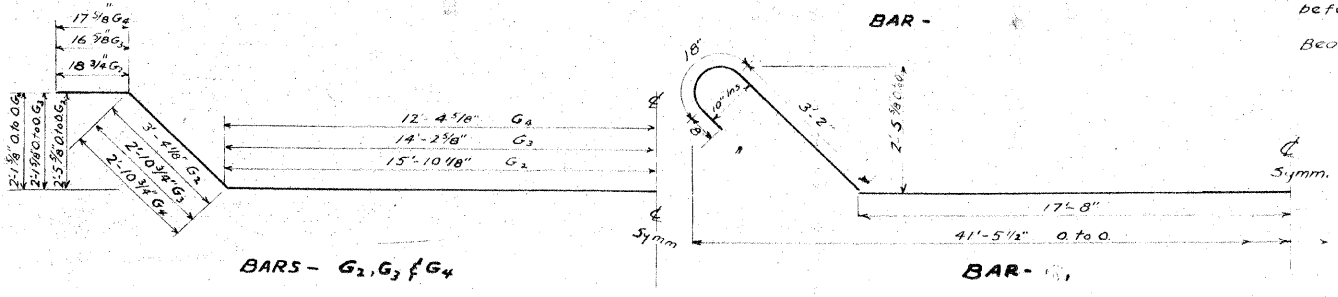
GENERAL NOTES

Class X Concrete shall be used throughout except in handrail and rail-pots which shall be constructed of handrail concrete.  
The concrete floor slab shall be finished in accordance with Art 613(e) of the Std. Specs.  
The Concrete Girders and Floor Slab shall be poured complete in one continuous operation.  
The final grade on the bridge is indicated by the crown elevations. Construct floor higher than the elevations shown by the amount indicated in the D.L. Deflection Diagram. See also Art 58.5 of the Std. Specs.  
The Handrail shall not be poured until after the falsework has been removed.  
All Structural Steel shall be given one shop coat of red lead paint and two field coats of aluminum paint.  
All paint shall be furnished and applied by the contractor.  
Structural steel shall be inspected by the Illinois Division of Highways before painting.  
Structural Steel includes all Rollers, Bearing Rs, Lead Rs, Pintles and Anchor Bolts.  
Super Structure Stresses:  
fs = 20,000 psi  
fc = 1200 psi  
n = 10  
Design Load H20-S16

BILL OF MATERIAL - SUPER

Bar	No.	Size	Length	Shape
a	115	5/8"	22'-0"	
a1	56	5/8"	24'-0"	
b	168	1/2"	22'-6"	
c	12	5/8"	22'-0"	
d	52	5/8"	2'-9"	
e	84	1/2"	1'-0"	
f	16	5/8"	20'-0"	
g	24	1 1/4"	2'-3"	
G	24	1 1/4"	46'-0"	
G1	12	1 1/4"	46'-0"	
G2	12	1 1/4"	41'-6"	
G3	4	1"	37'-0"	
G4	4	1"	33'-6"	
G5	12	3/4"	25'-0"	
S	240	1/2"	8'-6"	
Handrail Concrete			Cu Yds.	1.8
Class X Concrete			Cu Yds.	87.0
Reinforcement Bars			Lbs.	22,200
Removal of Exist. Superstr. Each			one	
Name Plate			one	
Structural Steel			Lbs.	2250

COMPUTED: H. S. Lawson  
DRAWN: George M. ...  
CHECKED: ...  
APPROVED: ...  
BRIDGE ENGINEER  
SUPERVISOR OF DESIGN  
CHIEF HIGHWAY ENGINEER



STATION 221.35  
BUILT 1949 BY  
STATE OF ILLINOIS  
S.B.I.R.T. 1 SEC. 9-R-B  
FA. PROJ. F-2(20)  
LOADING H20-S16

PROJECT F-2(20)  
S.B.I.R.T. 1 (S.B.I.R.T.) SEC. 9-R-B  
WILL COUNTY  
STATION 3+53

NAME PLATE LETTERING