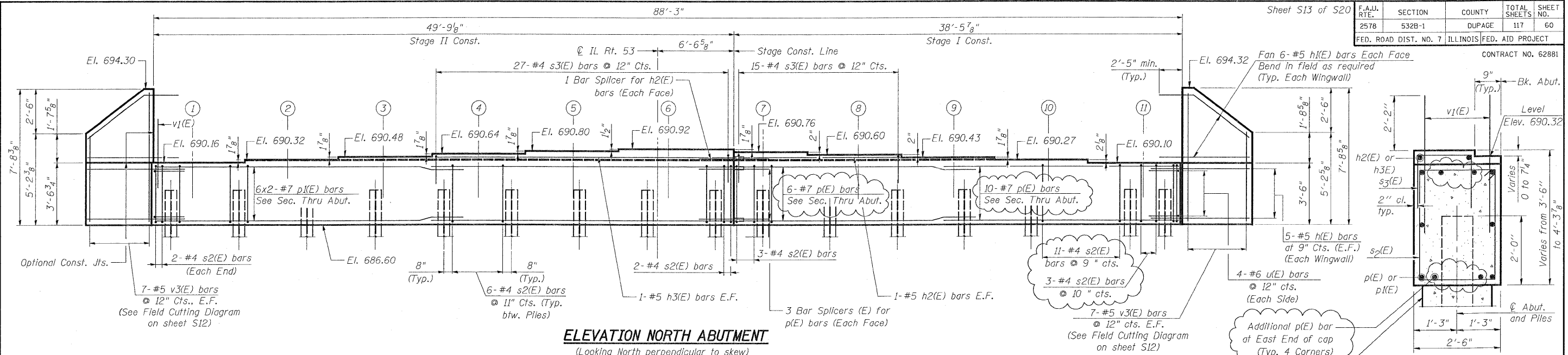


F.A.U. RTE.	SECTION	COUNTY	TOTAL SHEETS	SHEET NO.
2578	532B-1	DUPAGE	117	60
FED. ROAD DIST. NO. 7 ILLINOIS FED. AID PROJECT				

CONTRACT NO. 62881



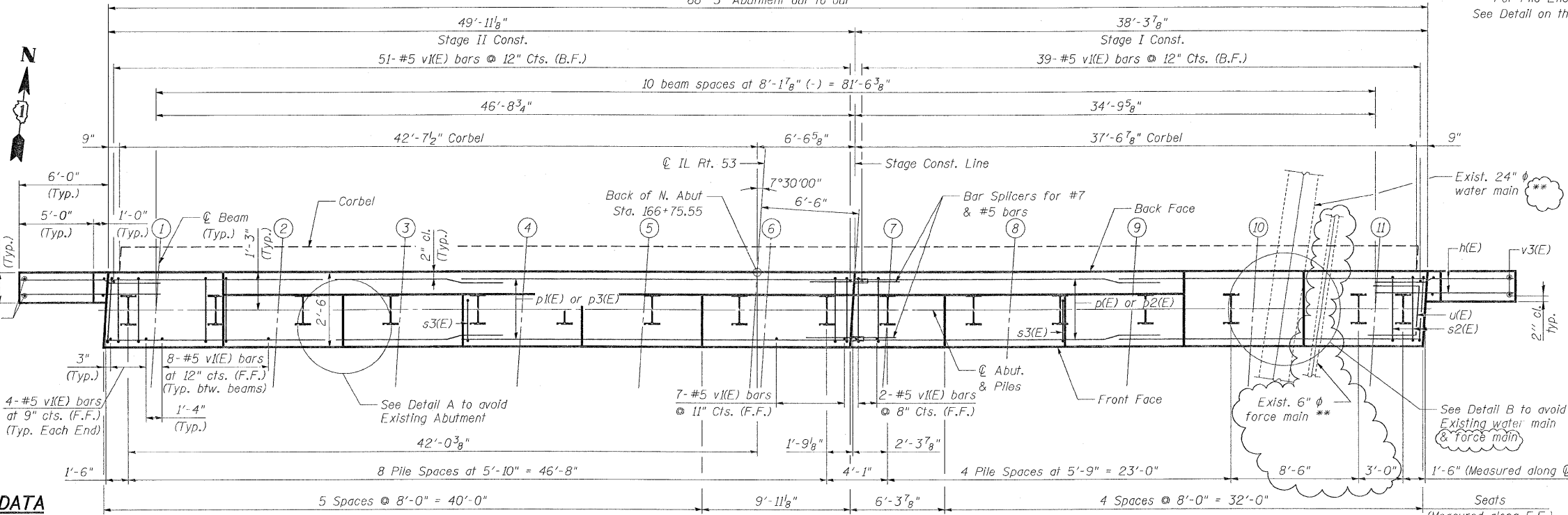
**ELEVATION NORTH ABUTMENT**  
(Looking North perpendicular to skew)

**SECTION THRU ABUTMENT**

**BILL OF MATERIAL**

Bar	No.	Size	Length	Shape	
h(E)	20	# 5	7'-8"	—	
h3(E)	24	# 5	8'-7"	—	
h2(E)	2	# 5	13'-10"	—	
h3(E)	2	# 5	25'-7"	—	
p(E)	16	# 7	20'-4"	—	
p3(E)	12	# 7	26'-4"	—	
s2(E)	95	# 4	11'-5"	□	
s3(E)	42	# 4	5'-5"	□	
u(E)	8	# 6	6'-2"	┘	
v1(E)	179	# 5	4'-4"	—	
v3(E)	14	# 5	12'-2"	—	
* Porous Granular Embankment, Special Structure Excavation				Cu. Yd.	119
Concrete Structures				Cu. Yd.	101
Reinforcement Bars, Epoxy Coated				Pound	3,710
Furnishing Steel Piles HP12x53				Foot	1,024
Driving Piles				Foot	1,024
Bar Splicers				Each	8
Pile Shoes				Each	16

\* See Special Provisions

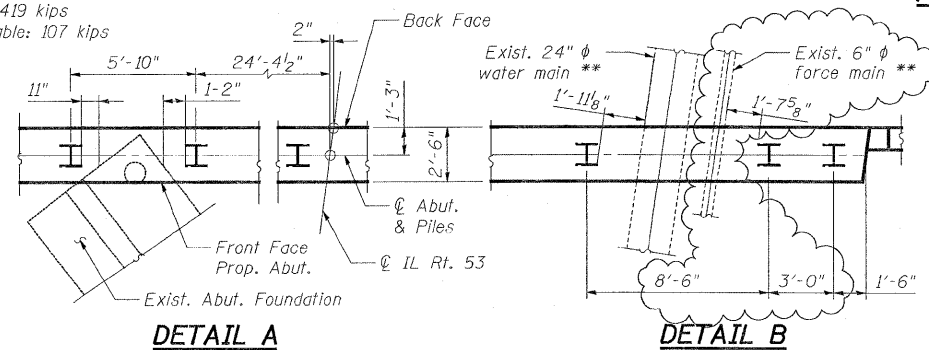


**PILE DATA**

Type: Steel HP 12x53 with Pile Shoes  
Nominal Required Bearing: 419 kips  
Allowable Resistance Available: 107 kips  
Est. Length: 64 ft  
No. Production Piles: 16

**NOTES:**

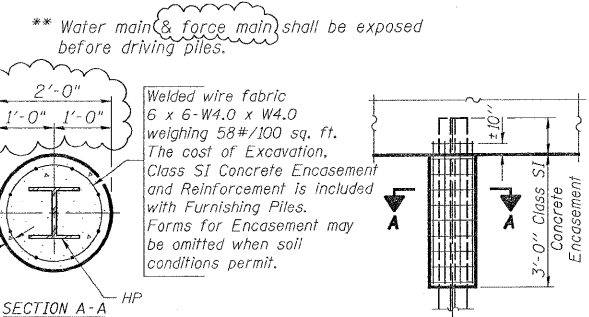
1. Pour steps monolithically with cap.
2. For v3(E) cutting diagram & bar bending diagrams see sheet S12.
3. For Bar Splicer Details see sheet S15.



**DETAIL A**

**DETAIL B**

**PLAN**



**PILE ENCASEMENT DETAIL**

**ANCHOR BOLT DETAIL**

BAR SIZE	MIN. LAP SPLICE
#4	1'-4"
#5	1'-8"
#6	2'-0"
#7	2'-9"

**REVISIONS**

NAME	DATE
R. DIGIullo	10/8/09

ILLINOIS DEPARTMENT OF TRANSPORTATION  
**NORTH ABUTMENT**  
ILLINOIS ROUTE 53 OVER  
SPRING BROOK CREEK  
FAU 2578 SECTION 532B-1  
STRUCTURE NO. 022-0189  
DUPAGE COUNTY STATION 166+46.79  
SCALE: NONE DRAWN BY: M.T. / E.M.  
DATE: 6/12/09 CHECKED BY: A. YARGICOLU

09/argicoglu/revy.Lisile, 3/15/09  
 09/argicoglu/revy.Lisile, 3/15/09  
 09/argicoglu/revy.Lisile, 3/15/09

**PATRICK**  
ENGINEERING INC.  
LISLE, ILLINOIS

Rev. 10-14-09