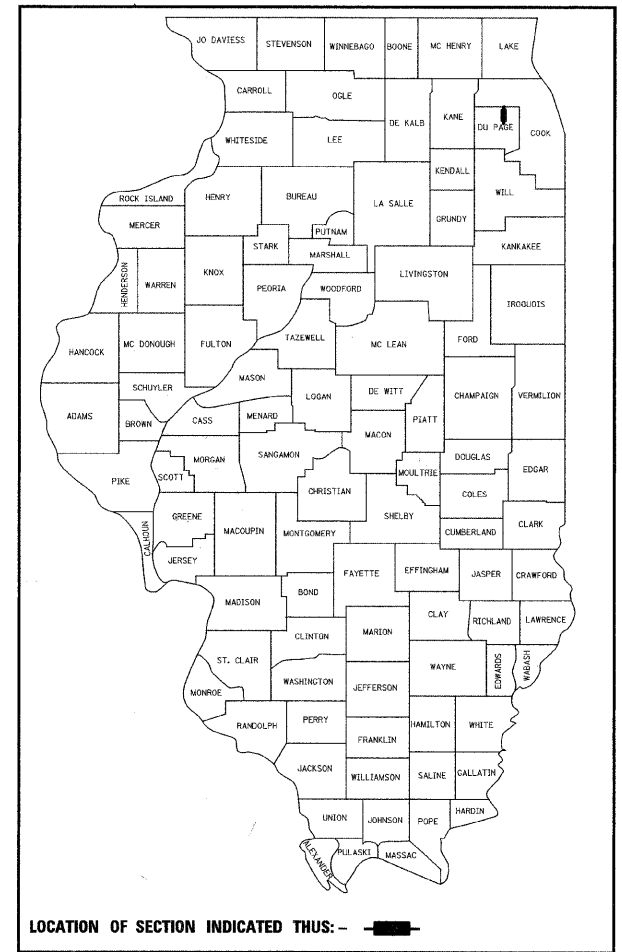


117+3=120

F.A.U. RTE.	SECTION	COUNTY	TOTAL SHEETS	SHEET NO.
2578	532B-1	DUPAGE	117	1

CONTRACT #62881

D-91-397-97



STATE OF ILLINOIS

DEPARTMENT OF TRANSPORTATION

DIVISION OF HIGHWAYS

PROPOSED HIGHWAY PLANS

F.A.U. ROUTE 2578 (ILLINOIS ROUTE 53) OVER SPRING BROOK CREEK PAVEMENT WIDENING AND RECONSTRUCTION AND BRIDGE REPLACEMENT

SECTION 532B-1
PROJECT NO. **ACM-2578(005)**
DuPAGE COUNTY
C-91-069-05

FOR INDEX OF SHEETS, SEE SHEET NO. 2

HIGHWAY CLASSIFICATION

MINOR ARTERIAL

DESIGN DESIGNATION

3500(20) ARTERIAL 14.56 (PCC-20)

TRAFFIC DATA

IL RTE 53

2002 ADT = 14,200 - 25,800

2020 ADT = 26,000 - 31,000

POSTED SPEED LIMIT = 40 MPH

DESIGN SPEED = 50 MPH

PROJECT DESCRIPTION

THE PROPOSED IMPROVEMENT CONSISTS OF THE PAVEMENT WIDENING AND RECONSTRUCTION OF ILLINOIS ROUTE 53, STRUCTURE REPLACEMENT (SN:022-0189), NEW STORM SEWER SYSTEM, AND TRAFFIC SIGNAL INSTALLATION.



Jarrod J. Cebulski
JARROD J. CEBULSKI, P.E.
NO. 062-050473
EXP. DATE: 11/30/09
SHEETS: 1-40 AND 81-117



Paul M. Lopez
PAUL M. LOPEZ, P.E., S.E.
NO. 081-005231
EXP. DATE: 11/30/10
SHEETS: 46-67 AND 69-70

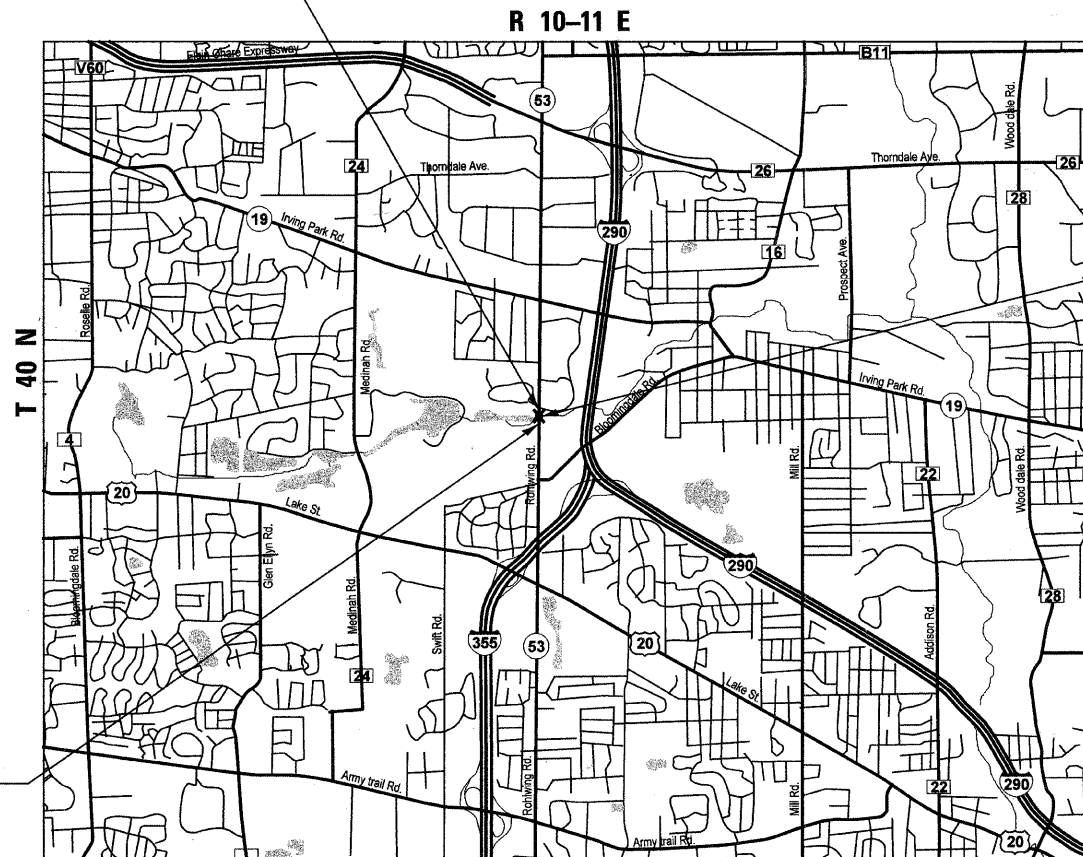


P.K. Gandhi
P.K. GANDHI, P.E.
NO. 062-034993
EXP. DATE: 11/30/09
SHEETS: 41-45



Deborah A. Zroka
DEBORAH A. ZROKA, S.E.
NO. 081-005152
EXP. DATE: 11/30/2010
SHEETS: 68 AND 71-80

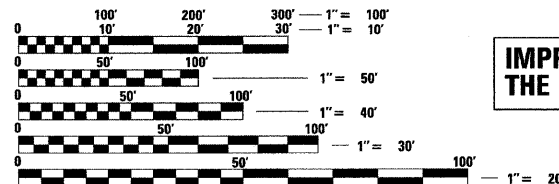
END IMPROVEMENT
STA. 170 + 85.00



IL RTE 53 OVER
SPRING BROOK CREEK
STA. 166 + 46.79
STRUCTURE
REPLACEMENT
SN:022-0074 (E)
022-0189 (P)

IMPROVEMENT LOCATED IN
THE VILLAGE OF ITASCA

BEGIN IMPROVEMENT
STA. 156 + 00.00



FULL SIZE PLANS HAVE BEEN PREPARED USING STANDARD ENGINEERING SCALES. REDUCED SIZED PLANS WILL NOT CONFORM TO STANDARD SCALES. IN MAKING MEASUREMENTS ON REDUCED PLANS, THE ABOVE SCALES MAY BE USED.

J.U.L.I.E.
JOINT UTILITY LOCATION INFORMATION FOR EXCAVATION
1-800-892-0123 OR 811

CONTRACT NO. 62881

LOCATION MAP

SCALE
1" = 2500'

GROSS LENGTH OF IMPROVEMENT = 1,485 FEET = 0.28 MILE

NET LENGTH OF IMPROVEMENT = 1,485 FEET = 0.28 MILE

STATE OF ILLINOIS
DEPARTMENT OF TRANSPORTATION
DIVISION OF HIGHWAYS

SUBMITTED JUNE 17 20 09

Diana M. O'Keefe
DEPUTY DIRECTOR OF HIGHWAYS, REGION ENGINEER

August 14, 20 09
Charles J. Ingersoll
ENGINEER OF DESIGN AND ENVIRONMENT

August 14, 20 09
Christine M. Reed
DIRECTOR OF HIGHWAYS, CHIEF ENGINEER

PRINTED BY THE AUTHORITY
OF THE STATE OF ILLINOIS

DISTRICT 1 - DESIGN/CONSULTANT SERVICES SECTION/ RAJENDRA SHAH (847) 705-4555

PATRICK
ENGINEERING INC.