

F.A.U. RTE.	SECTION	COUNTY	TOTAL SHEETS	SHEET NO.
2578	532B-1	DU PAGE	117	18
STA.		TO STA.		
FED. ROAD DIST. NO.	ILLINOIS	FED. AID PROJECT		

CONTRACT #62881

ILLINOIS ROUTE 53 COORDINATE TABLE		
LOCATION	NORTHING	EASTING
POT # 1 = STA. 148+76.84	1927621.16	1066304.77
POT # 2 = STA. 201+64.66	1932908.97	1066315.58

BALL PARK ROAD COORDINATE DATA			
CURVE NO.	ALIGNMENT POINT	NORTHING	EASTING
	POT # 3 STA. 10+00.00	1929322.84	1066308.25
	POT # 4 STA. 10+15.76	1929323.08	1066324.01
	POT # 5 STA. 10+25.95	1929323.07	1066334.20
	POT # 6 STA. 10+60.49	1929323.37	1066368.74
	PC = STA. 10+99.93	1929326.03	1066408.09
EX BALL3-1	PI = STA. 11+08.34	1929326.59	1066416.48
	PT = STA. 11+16.66	1929329.19	1066424.49
	PC = STA. 11+62.57	1929342.97	1066468.27
EX BALL3-2	PI = STA. 11+86.38	1929350.15	1066490.96
	PT = STA. 12+09.79	1929349.95	1066514.77
	POT # 7 STA. 12+93.39	1929349.24	1066598.36

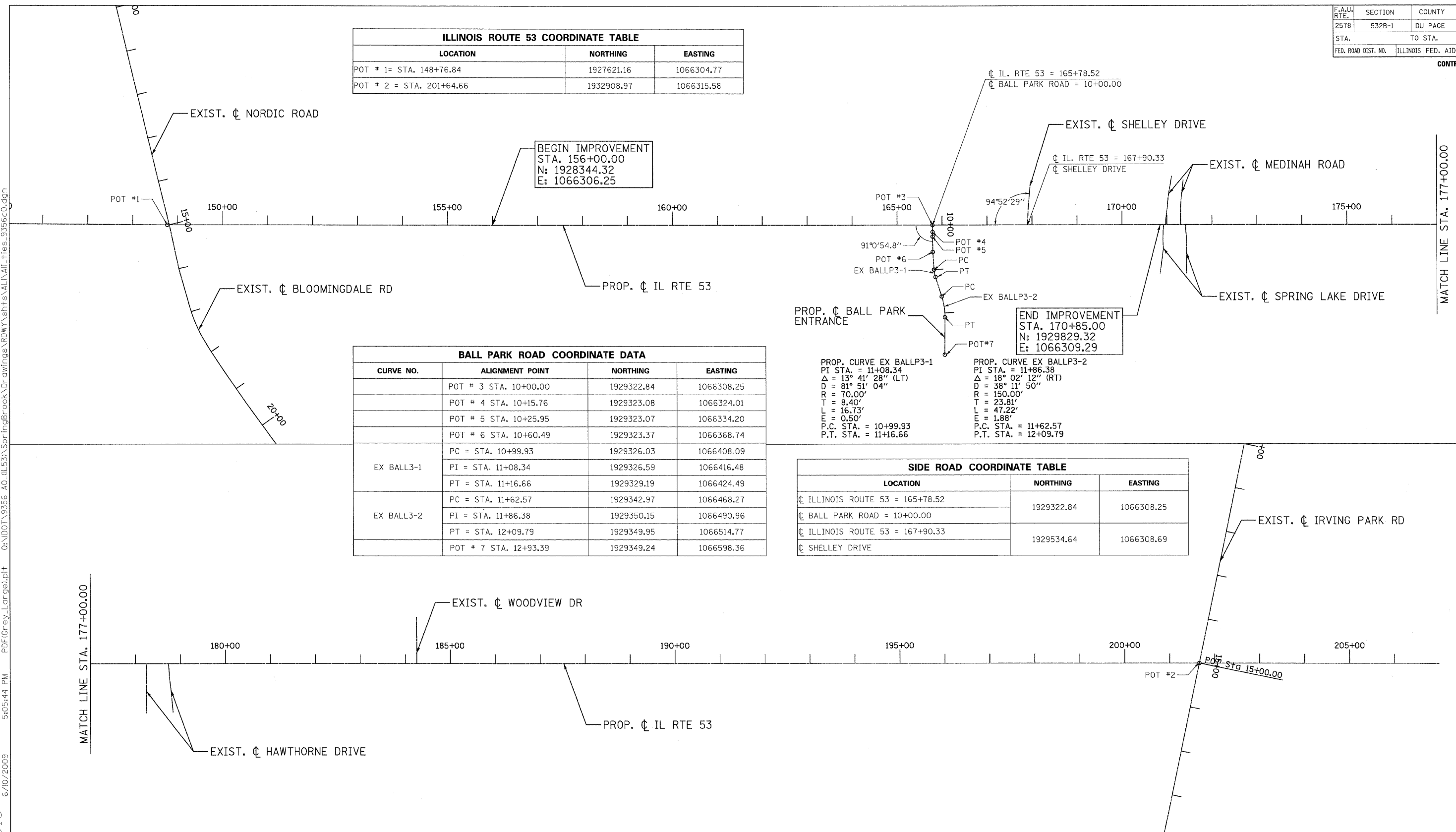
SIDE ROAD COORDINATE TABLE		
LOCATION	NORTHING	EASTING
CL ILLINOIS ROUTE 53 = 165+78.52	1929322.84	1066308.25
CL BALL PARK ROAD = 10+00.00		
CL ILLINOIS ROUTE 53 = 167+90.33	1929534.64	1066308.69
CL SHELLEY DRIVE		

PROP. CURVE EX BALLP3-1  
 PI STA. = 11+08.34  
 $\Delta = 13^{\circ} 41' 28''$  (LT)  
 $D = 81^{\circ} 51' 04''$   
 $R = 70.00'$   
 $T = 8.40'$   
 $L = 16.73'$   
 $E = 0.50'$   
 P.C. STA. = 10+99.93  
 P.T. STA. = 11+16.66

PROP. CURVE EX BALLP3-2  
 PI STA. = 11+86.38  
 $\Delta = 18^{\circ} 02' 12''$  (RT)  
 $D = 38^{\circ} 11' 50''$   
 $R = 150.00'$   
 $T = 23.81'$   
 $L = 47.22'$   
 $E = 1.88'$   
 P.C. STA. = 11+62.57  
 P.T. STA. = 12+09.79

BEGIN IMPROVEMENT  
 STA. 156+00.00  
 N: 1928344.32  
 E: 1066306.25

END IMPROVEMENT  
 STA. 170+85.00  
 N: 1929829.32  
 E: 1066309.29



REVISIONS	
NAME	DATE

ILLINOIS DEPARTMENT OF TRANSPORTATION  
 ILLINOIS ROUTE 53 (FAU 2578)  
 ALIGNMENT, TIES, & BENCHMARKS  
 STA. 156+00.00 TO STA. 170+85.00  
 SCALE: 1"=100'  
 DATE: 6/12/09  
 DRAWN BY: CPK  
 CHECKED BY: JJC



G:\NDDOT\9356 A0 (L53)\SpringBrook\Drawings\RDWY\shfts\ALL\AIL\_ties\_9356c0.dgn  
 6/10/2009 5:05:44 PM PDF(Grey\_Large).plt