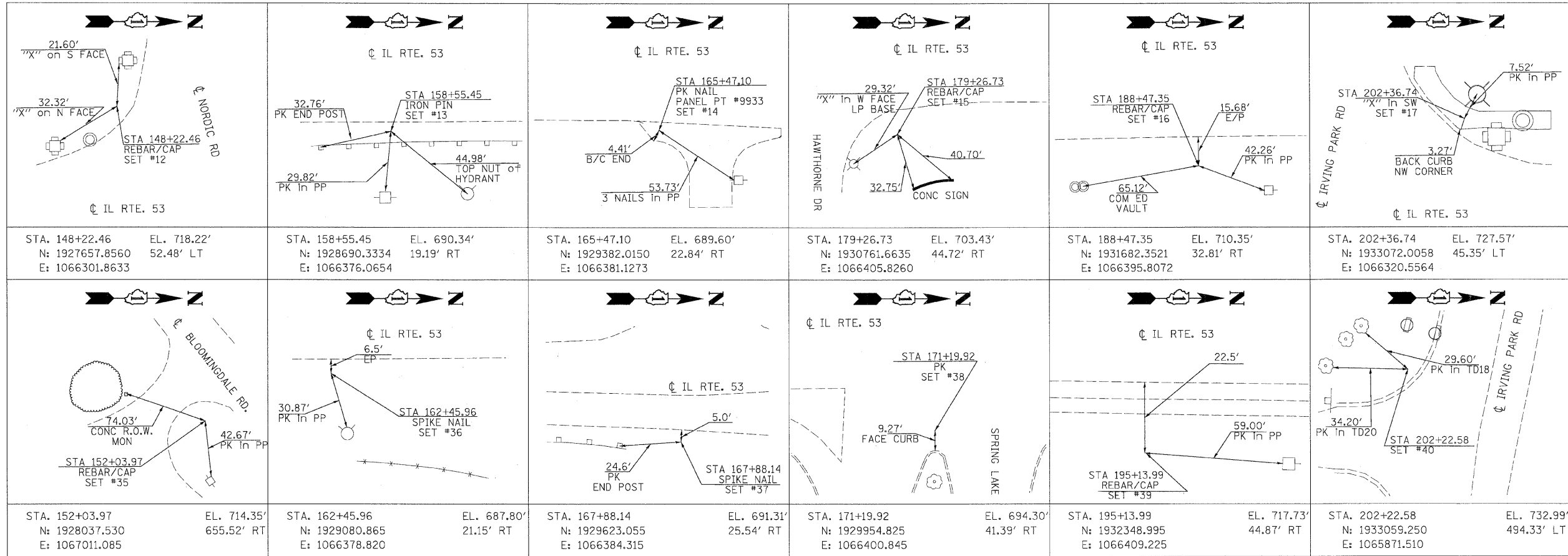


F.A.U. RTE.	SECTION	COUNTY	TOTAL SHEETS	SHEET NO.
2578	532B-1	DU PAGE	117	19
STA.		TO STA.		
FED. ROAD DIST. NO.	ILLINOIS	FED. AID PROJECT		
CONTRACT #62861				



NOTE: GROUND COORDINATES ARE NOTED ABOVE

BENCHMARK DESCRIPTION:

IDOT CONTROL POINT GRID COORDINATE TABLE

POINT NUMBER	N	E	ELEV.	STA.	OFFSET	LT/RT
TH-9931	1927736.62	1065648.37	720.18	149+90.96	656.64	LT
TH-9932	1928186.00	1067004.75	710.46	154+43.11	698.82	RT
TH-9933	1929291.25	1066331.12	689.59	165+45.98	22.93	RT
TH-9934	1929992.12	1065651.00	705.09	172+46.46	658.62	LT
TH-9936	1931152.25	1066295.75	707.39	184+07.90	16.24	LT
TH-9937	1932035.00	1066988.87	712.86	192+92.07	675.07	RT
TH-9938	1932320.62	1065852.50	727.48	195+75.36	461.88	LT

REVISIONS	
NAME	DATE

ILLINOIS DEPARTMENT OF TRANSPORTATION
ILLINOIS ROUTE 53 (FAU 2578)

ALIGNMENT, TIES, & BENCHMARKS

SCALE: NTS
DATE: 6/12/09

DRAWN BY: CPK
CHECKED BY: JUC

PATRICK ENGINEERING INC. ILLINOIS
 LISLE, ILLINOIS
 6/10/2009 5:05:48 PM PDF(Grey_Large).plt G:\DOT\9356_A0_ILL53\Springbrook\Drawings\RDWY\shrs\ALI\A1_1res_9356a0.dgn