

F.A.U. RTE.	SECTION	COUNTY	TOTAL SHEETS	SHEET NO.
2578	532B-1	DU PAGE	117	30
STA.		TO STA.		
FED. ROAD DIST. NO.	ILLINOIS	FED. AID PROJECT		

CONTRACT #62881

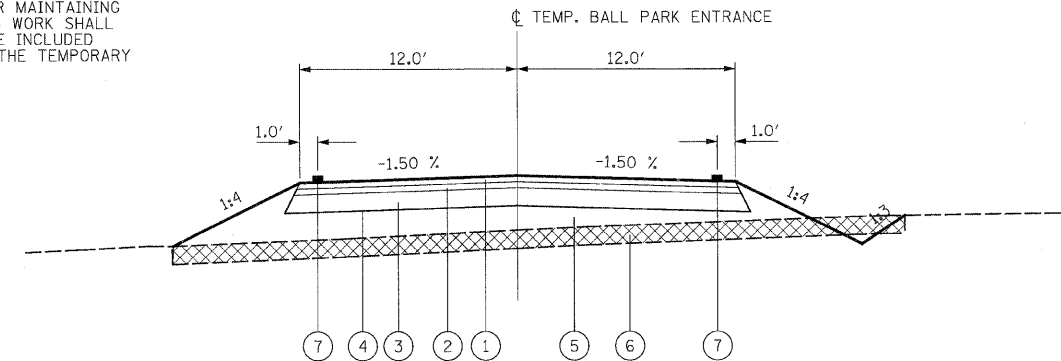
NOTES:

THE ALIGNMENT AND PROFILE OF THE TEMPORARY BALL PARK ENTRANCE WILL BE CONSTRUCTED TO THE APPROVAL OF THE RESIDENT ENGINEER.

THE CONTRACTOR SHALL COORDINATE WITH THE VILLAGE OF ITASCA PARK DISTRICT IN MAINTAINING ACCESS TO THE BASEBALL FACILITIES DURING CONSTRUCTION (FROM APRIL TO NOVEMBER).

THE TREES TO BE SALVAGED AND TRANSPLANTED SHALL BE TRANSPLANTED PER THE APPROVAL OF THE RESIDENT ENGINEER.

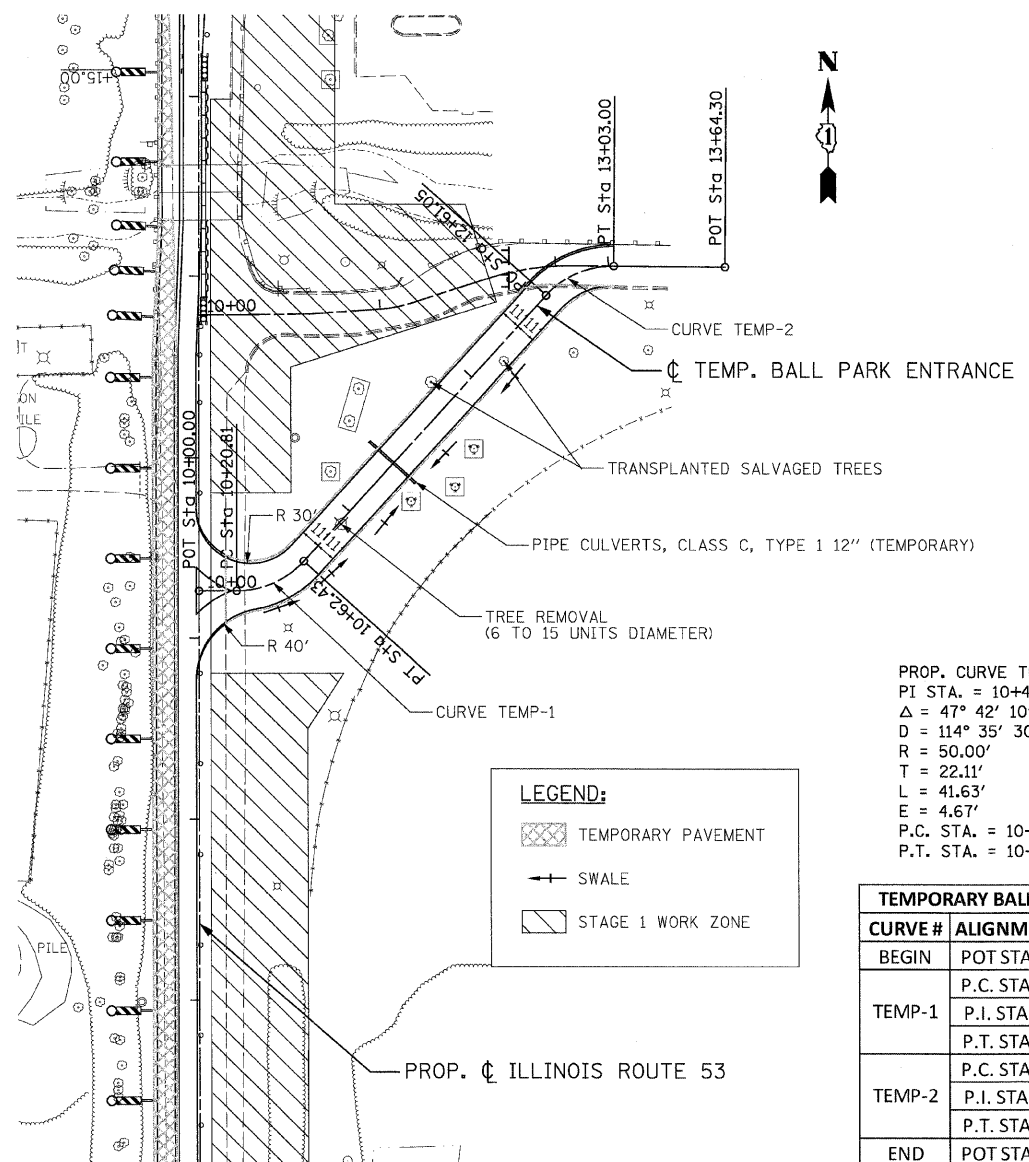
THE CONTRACTOR SHALL BE RESPONSIBLE FOR MAINTAINING THE TEMPORARY BALL PARK ENTRANCE. THIS WORK SHALL NOT BE PAID FOR SEPARATELY BUT SHALL BE INCLUDED IN THE COST OF THE ITEMS TO CONSTRUCT THE TEMPORARY BALL PARK ENTRANCE.



TYPICAL SECTION FOR TEMPORARY BALL PARK ROAD

TYPICAL SECTION LEGEND:

- ① HOT-MIX ASPHALT SURFACE COURSE, MIX "C", N 50 (2")
- ② AGGREGATE SURFACE COURSE, TYPE B (2")
- ③ GRANULAR EMBANKMENT, SPECIAL (6")
- ④ GEOTECHNICAL FABRIC FOR GROUND STABILIZATION
- ⑤ FURNISHED EXCAVATION (SEE EARTHWORK SCHEDULES)
- ⑥ REMOVAL AND DISPOSAL OF UNSUITABLE MATERIAL (SEE EARTHWORK SCHEDULES)
- ⑦ WET PAVEMENT MARKING TAPE, TY III (4")



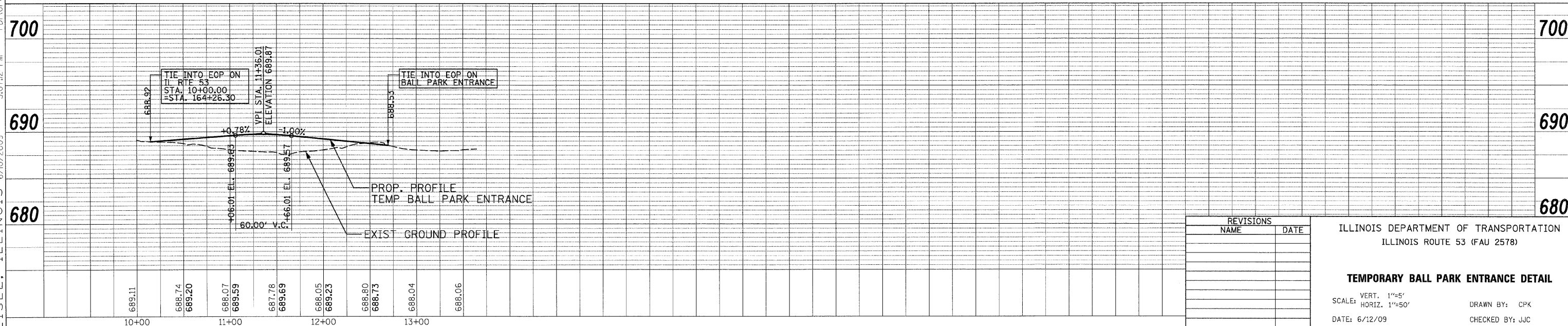
LEGEND:

	TEMPORARY PAVEMENT
	SWALE
	STAGE 1 WORK ZONE

PROP. CURVE TEMP-1 PI STA. = 10+42.91 Δ = 47° 42' 10" (LT) D = 114° 35' 30" R = 50.00' T = 22.11' L = 41.63' E = 4.67' P.C. STA. = 10+20.81 P.T. STA. = 10+62.43	PROP. CURVE TEMP-2 PI STA. = 12+83.35 Δ = 48° 04' 15" (RT) D = 114° 35' 30" R = 50.00' T = 22.30' L = 41.95' E = 4.75' P.C. STA. = 12+61.05 P.T. STA. = 13+03.00
---	---

TEMPORARY BALL PARK ENTRANCE COORDINATE TABLE

CURVE #	ALIGNMENT POINT	NORTHING	EASTING
BEGIN	POT STA. 10+00.00	1,929,170.62	1,066,307.94
	P.C. STA. 10+20.81	1,929,170.57	1,066,328.75
TEMP-1	P.I. STA. 10+42.91	1,929,170.53	1,066,350.85
	P.T. STA. 10+62.43	1,929,186.85	1,066,365.76
	P.C. STA. 12+61.05	1,929,333.49	1,066,499.73
TEMP-2	P.I. STA. 12+83.35	1,929,349.95	1,066,514.77
	P.T. STA. 13+03.00	1,929,349.76	1,066,537.07
END	POT STA. 13+64.30	1,929,349.242	1,066,598.36



REVISIONS

NAME	DATE

ILLINOIS DEPARTMENT OF TRANSPORTATION
ILLINOIS ROUTE 53 (FAU 2578)

TEMPORARY BALL PARK ENTRANCE DETAIL

SCALE: VERT. 1"=5'
HORIZ. 1"=50'

DATE: 6/12/09

DRAWN BY: CPK
CHECKED BY: JJC

PATRICK ENGINEERING INC. ENGINEERING INC. LISLE, ILLINOIS 6/10/2009 5:07:42 PM P:\Grey_Large.plt 0:\DOT\9356_A0_(IL53)\SpringBrook\Drawings\RDWY\sh\T\S\MOT_detail.dgn