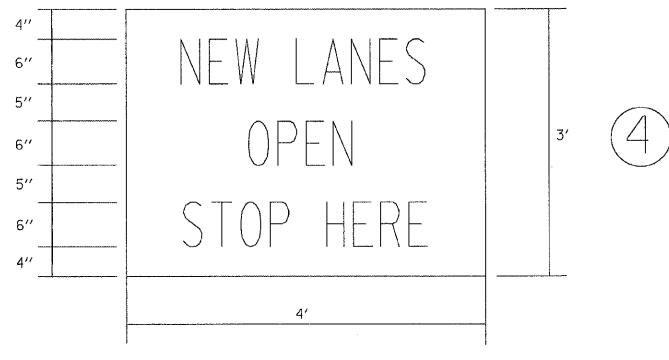
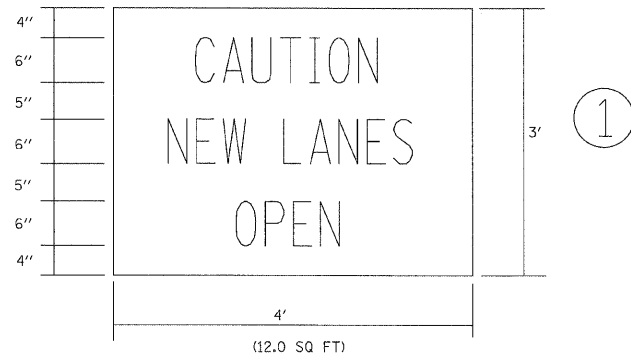


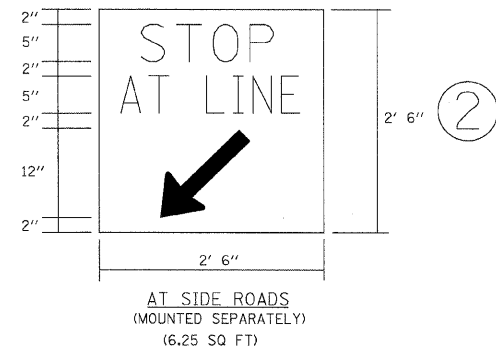
| | | | | |
|---------------------|----------|------------------|--------------|-----------|
| F.A.U. RTE. | SECTION | COUNTY | TOTAL SHEETS | SHEET NO. |
| 2578 | 532B-1 | DUPAGE | 117 | 31 |
| STA. | | TO STA. | | |
| FED. ROAD DIST. NO. | ILLINOIS | FED. AID PROJECT | | |

CONTRACT #62881

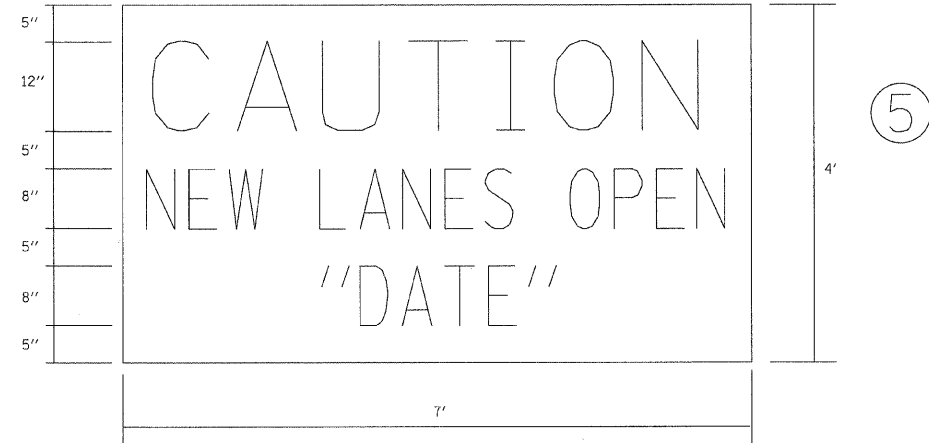


AT ENTRANCES
(12.0 SQ FT)

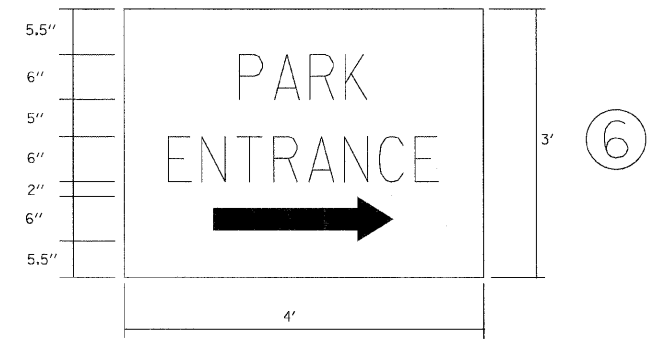
NOTE:
ABOVE SIGNS SHALL BE BLACK ON ORANGE
REFLECTIVE BACKGROUND



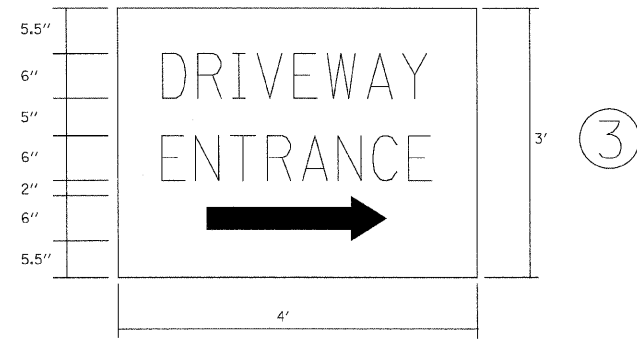
NOTE:
ABOVE SIGNS SHALL BE BLACK ON ORANGE
REFLECTIVE BACKGROUND



AT ENDS OF PROJECT
(28.0 SQ FT)



AT COMMERCIAL ENTRANCES
(12.0 SQ FT)



AT COMMERCIAL ENTRANCES
(12.0 SQ FT)

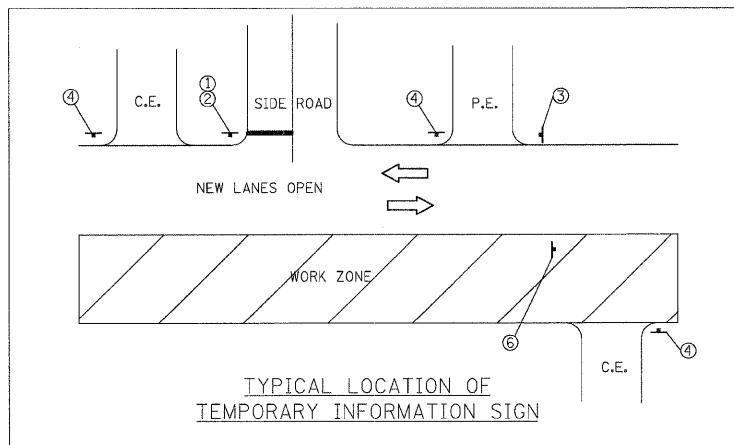
NOTE:
SIGN SHALL BE GREEN ON WHITE REFLECTIVE
BACKGROUND WITH .50 IN. BORDER.

TWO SIGNS SHALL BE USED AT EACH COMMERCIAL
DRIVEWAY AS DIRECTED BY THE ENGINEER.

HALF OF THE SIGNS SHALL REQUIRE THE ARROW
TO POINT TO THE LEFT AND THE OTHER HALF
TO THE RIGHT (AS SHOWN).

SEE SPECIAL PROVISION FOR "TEMPORARY
INFORMATION SIGNS" FOR ADDITIONAL INFORMATION.

ALL DIMENSIONS ARE IN FEET
UNLESS OTHERWISE SHOWN.



| REVISIONS | |
|-----------|------|
| NAME | DATE |
| | |
| | |
| | |
| | |
| | |
| | |
| | |
| | |
| | |
| | |

ILLINOIS DEPARTMENT OF TRANSPORTATION

SUGGESTED STAGING OF CONSTRUCTION
& TRAFFIC CONTROL
TEMPORARY INFORMATION SIGNS

SCALE: NONE
DATE 6/12/09

DRAWN BY TCK
CHECKED BY JC