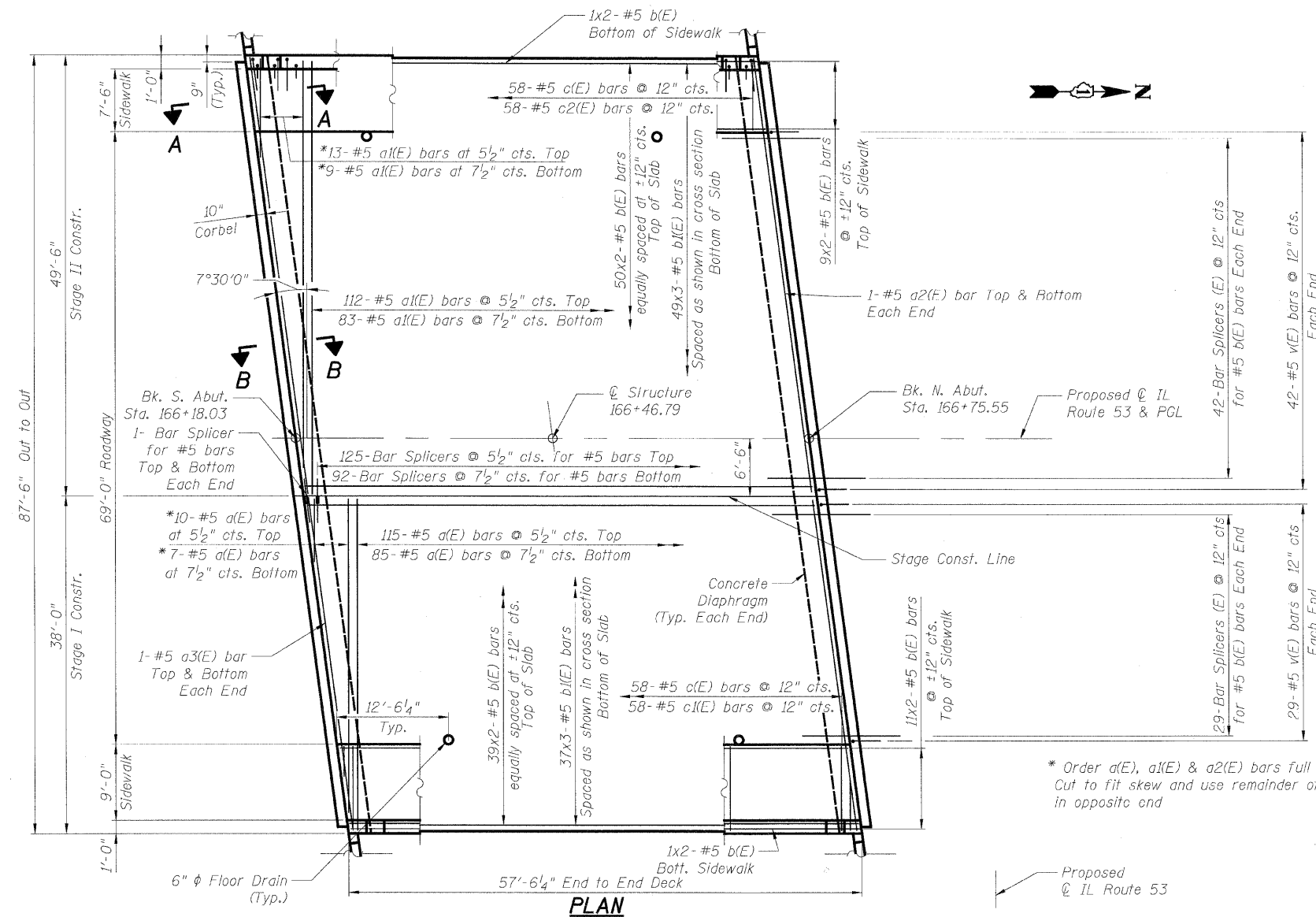


FAU RTE.	SECTION	COUNTY	TOTAL SHEETS	SHEET NO.
257B	532B-1	DUPAGE	117	52
FED. ROAD DIST. NO. 7 ILLINOIS FED. AID PROJECT				

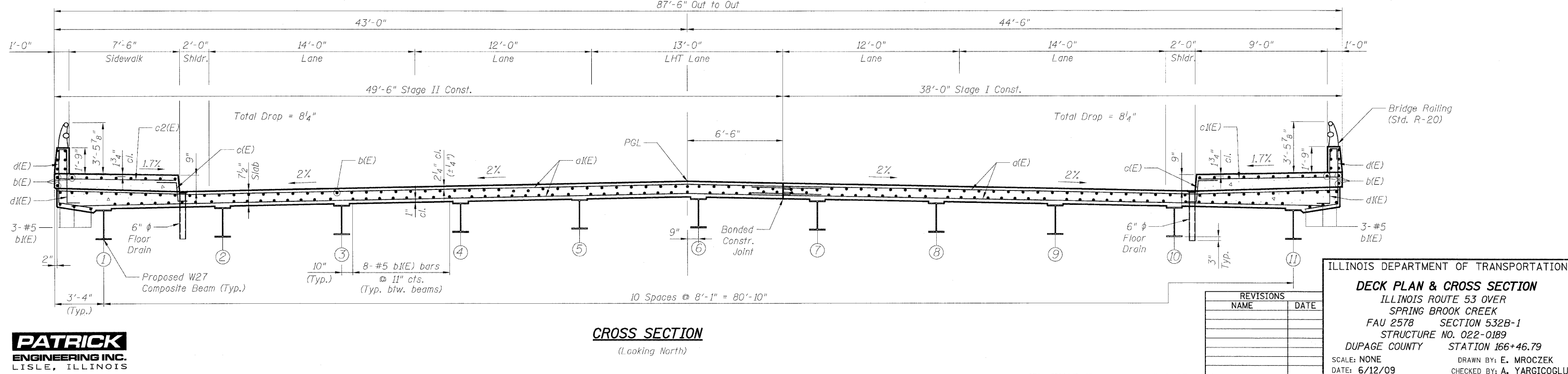


* Order a(E), a(E) & a2(E) bars full length. Cut to fit skew and use remainder of bars in opposite end

MIN. LAP SPLICE	
BAR SIZE	CLASS "C" SPLICE
#4	1'-8"
#5	2'-2"
#6	2'-7"
#7	3'-5"

NOTES:

1. Reinforcement bars designated (E) shall be epoxy coated.
2. Bars indicated thus 20 x 3 - #5 etc. indicates 20 lines of bars with 3 lengths per line.
3. For Bill of Material and Superstructure Details see Sheet S6.
4. For parapet reinforcement see Sheet S6.
5. For Bar Splicer Details see sheet S15.
6. For Sections A-A & B-B see sheet S7.



REVISIONS	
NAME	DATE

ILLINOIS DEPARTMENT OF TRANSPORTATION

DECK PLAN & CROSS SECTION

ILLINOIS ROUTE 53 OVER
 SPRING BROOK CREEK
 FAU 257B SECTION 532B-1
 STRUCTURE NO. 022-0189
 DUPAGE COUNTY STATION 166+46.79

SCALE: NONE DRAWN BY: E. MROCEK
 DATE: 6/12/09 CHECKED BY: A. YARGICOLU

6/10/2009 5:09:34 PM G:\NDOT\9185-A0-ILL53\Springbrook\Drawings\STRUCT\05_deckplan.dgn