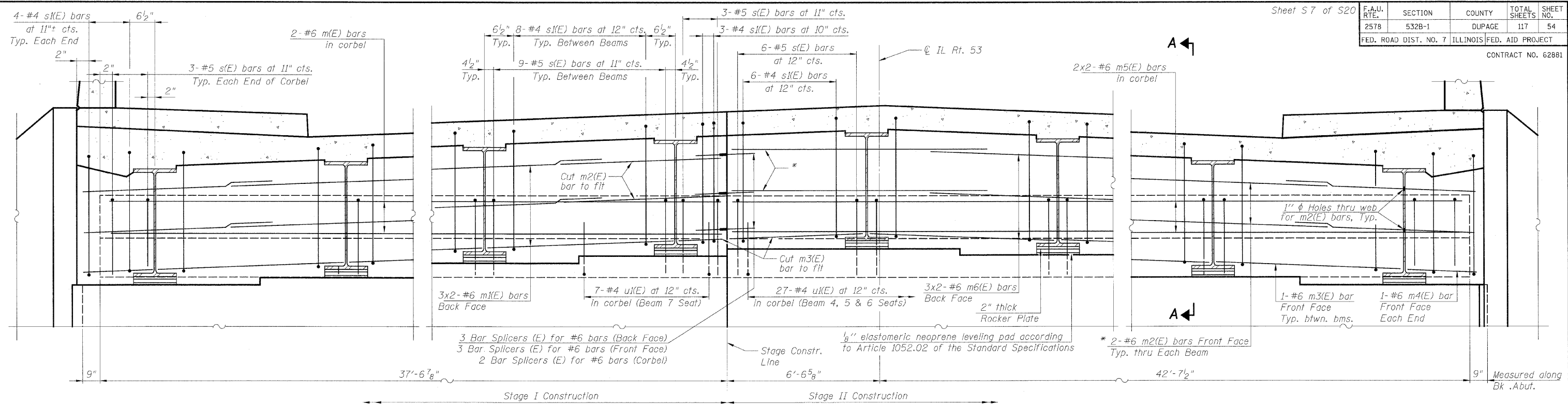


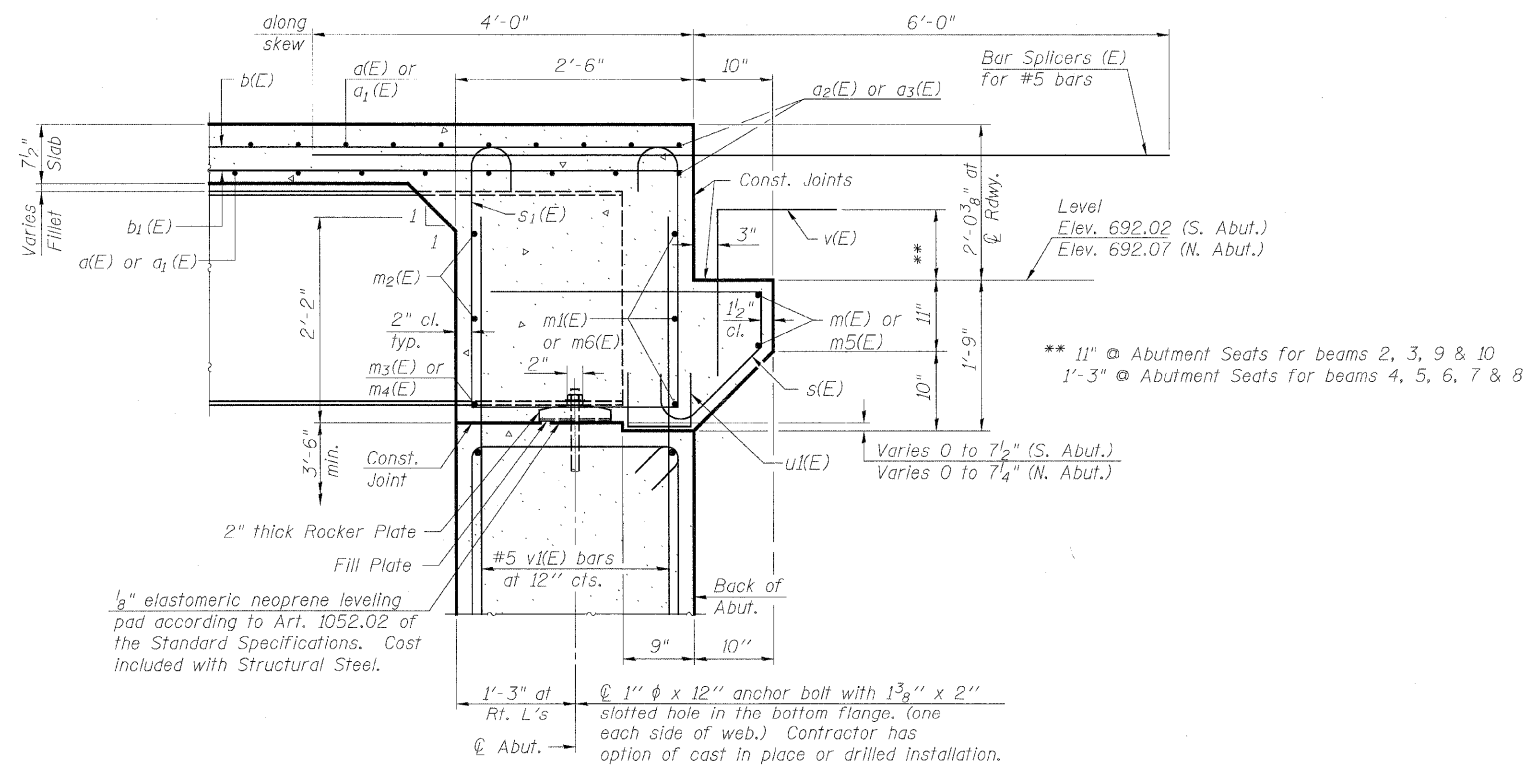
FAU RTE.	SECTION	COUNTY	TOTAL SHEETS	SHEET NO.
2578	532B-1	DUPAGE	117	54
FED. ROAD DIST. NO. 7 ILLINOIS FED. AID PROJECT				



DIAPHRAGM ELEVATION AT ABUTMENT

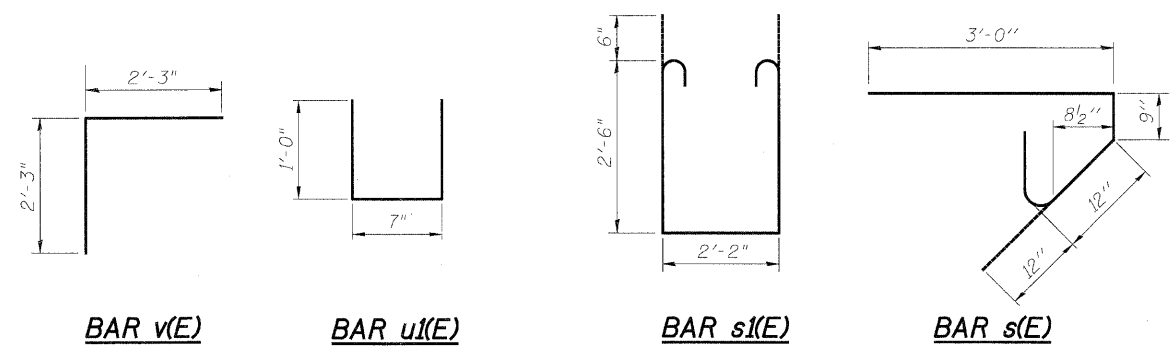
South Abutment - Looking South
North Abutment similar

* Shift m2(E) bars towards the Stage Line as required for min. bar lap.



SECTION A-A

Dimensions at right angles to abutment, except as shown.



NOTES:

1. Reinforcement bars in diaphragm are billed with superstructure on Sheet S6.
2. Concrete in diaphragm is included with Concrete Superstructure on Sheet S6.
3. The s(E), s1(E) and u(E) bars shall be placed parallel to the beams. Spacing for these bars shall be at right angles to the beams.
4. For anchor bolt details see Sheet S11.

MIN. BAR LAP

#6 bar = 2'-9"

REVISIONS	
NAME	DATE

ILLINOIS DEPARTMENT OF TRANSPORTATION

DIAPHRAGM DETAILS

ILLINOIS ROUTE 53 OVER
SPRING BROOK CREEK
FAU 2578 SECTION 532B-1
STRUCTURE NO. 022-0189
DUPAGE COUNTY STATION 166+46.79

SCALE: NONE DRAWN BY: E. MROCEK
DATE: 6/12/09 CHECKED BY: A. YARGICOGLU