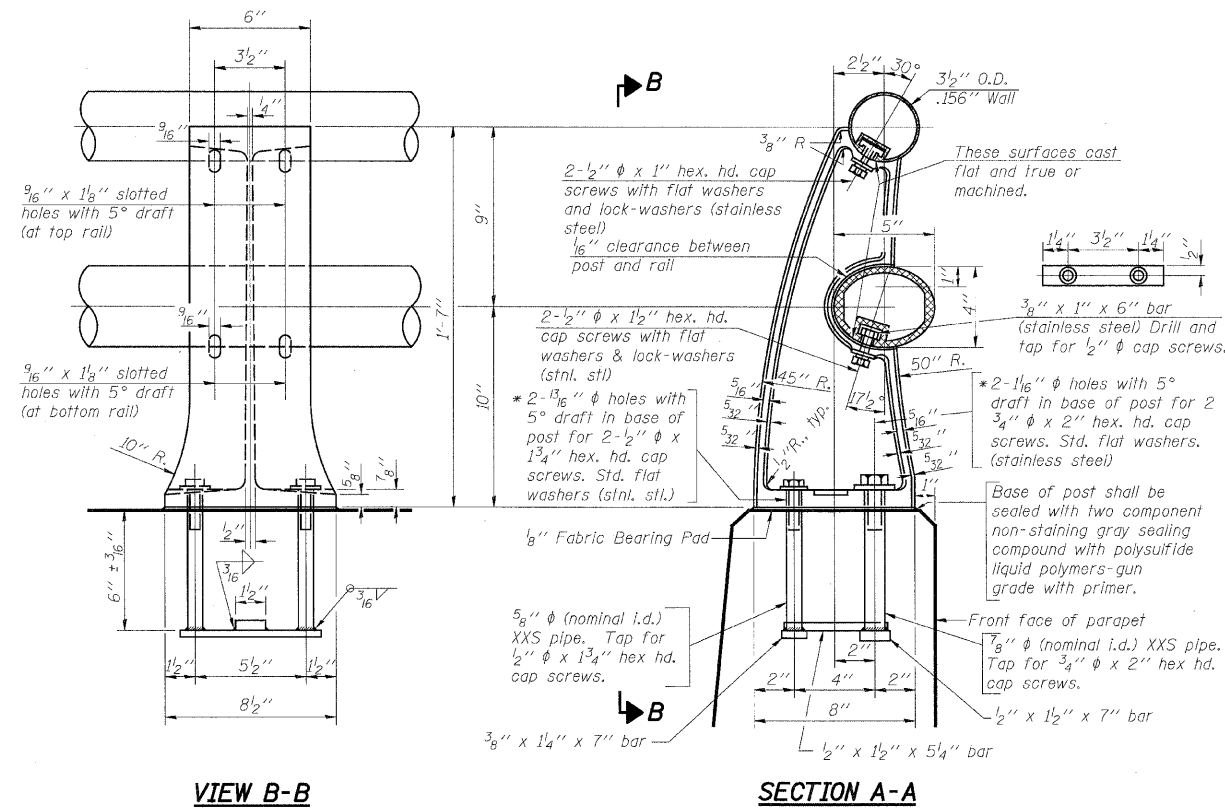
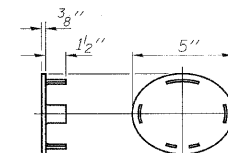


F.A.I. RTE.	SECTION	COUNTY	TOTAL SHEETS	SHEET NO.
2578	532B-1	DUPAGE	117	55
FED. ROAD DIST. NO. 7 ILLINOIS FED. AID PROJECT				

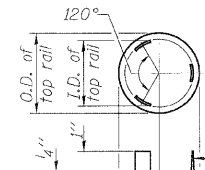


* In lieu of the cast-in-place anchor device shown, the Contractor has the option of drilling and setting stainless steel anchor rods of the same diameter and grade as the specified cap screws according to Article 509.06 of the Standard Specifications. Embedment shall be according to the manufacturer's specifications.



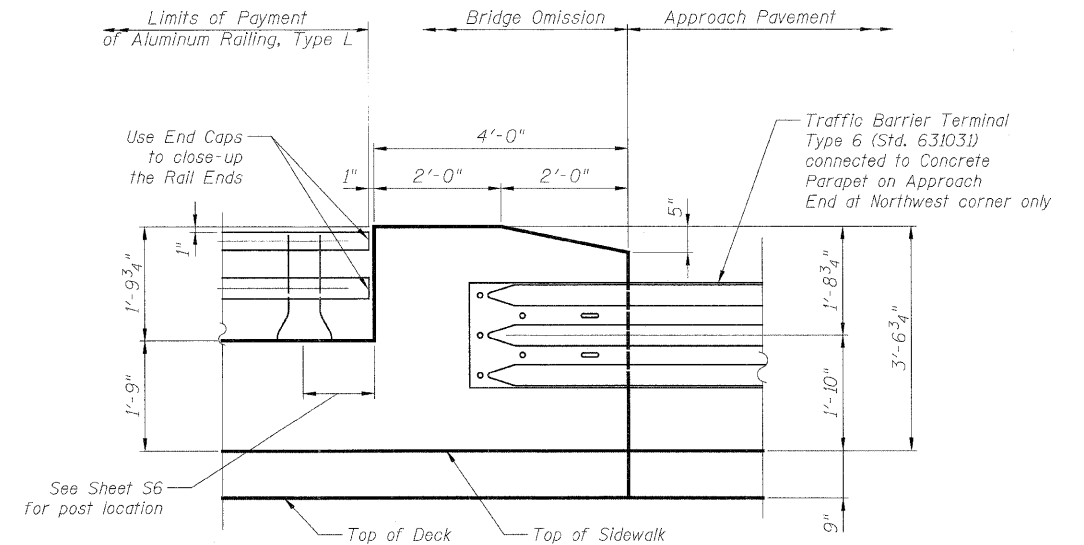
CAST END CAP

For bottom rail
DRIVE FIT TYPE
4 Required

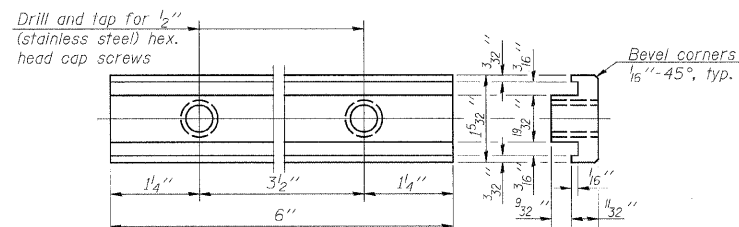


CAST END CAP

For top rail
4 Required

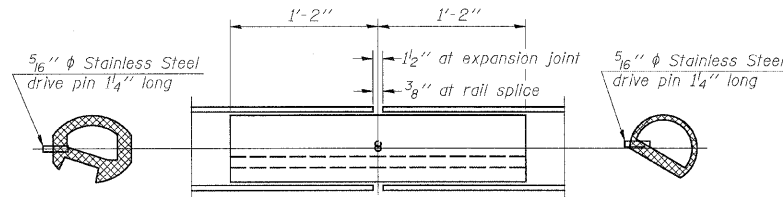


RAIL TERMINAL AT CONCRETE PARAPET

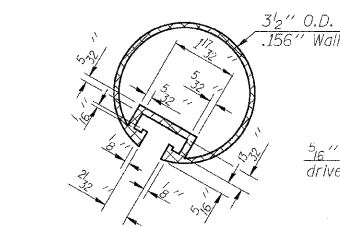


RAIL POST CLAMP BAR

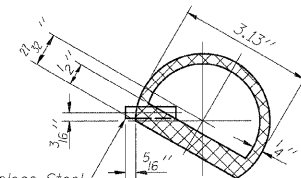
For Top Rail



RAIL SPLICE

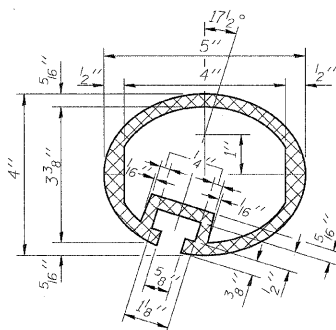


SECTION THRU TOP RAIL

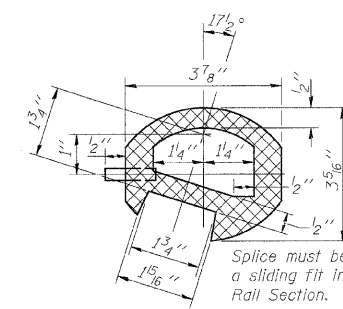


SECTION THRU SPLICE

For Top Rail



SEC. THRU ELLIPTICAL RAIL SECTION



SEC. THRU SPLICE

Notes:

- All Posts shall be normal to parapet.
- All joints in rail shall be spliced per detail.
- All exposed rail ends shall be capped per detail.
- Provide 1-1/8" and 2-1/16" Aluminum Shims for 25% of the Posts. Rail elements shall be parallel to Grade-high spots will be ground and low spots shimmed.
- See sheet S6 of S20 for rail post spacing.

BILL OF MATERIAL

Item	Unit	Quantity
Aluminum Railing, Type L	Foot	99

**ALUMINUM RAILING, TYPE L
STRUCTURE NO.**

REVISIONS	
NAME	DATE

ILLINOIS DEPARTMENT OF TRANSPORTATION

BRIDGE RAILING DETAILS

ILLINOIS ROUTE 53 OVER
SPRING BROOK CREEK
FAU 2578 SECTION 532B-1
STRUCTURE NO. 022-0189
DUPAGE COUNTY STATION 166+46.79

SCALE: NONE
DATE: 6/12/09

DRAWN BY: E. MROCEK
CHECKED BY: A. YARGICOLU