

**SECTION THRU ABUTMENT**

**BILL OF MATERIAL**

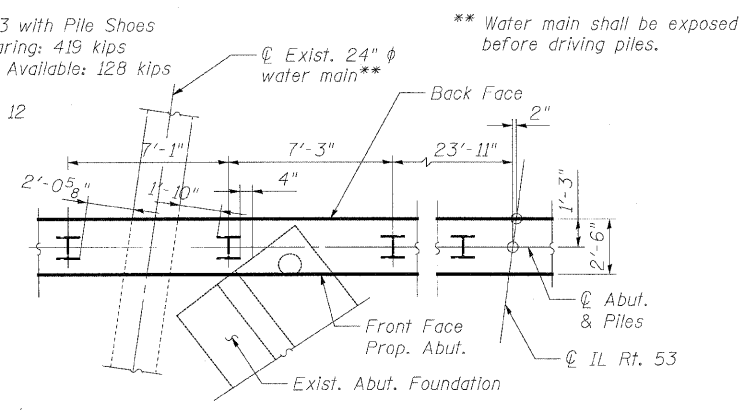
Bar	No.	Size	Length	Shape
h(E)	20	# 5	7'- 8"	—
h1(E)	24	# 5	8'- 7"	—
h2(E)	2	# 5	13'- 11"	—
h3(E)	2	# 5	25'- 3"	—
h4(E)	2	# 5	9'- 6"	—
h5(E)	4	# 5	3'- 0"	—
p(E)	12	# 7	20'- 4"	—
p1(E)	12	# 7	26'- 4"	—
s2(E)	87	# 4	11'- 5"	□
s3(E)	42	# 4	5'- 5"	□
u(E)	8	# 6	6'- 2"	└
v1(E)	179	# 5	4'- 4"	—
v2(E)	7	# 5	12'- 1"	—
v3(E)	7	# 5	12'- 2"	—

* Porous Granular Embankment, Special	Cu. Yd.	118
Structure Excavation	Cu. Yd.	92
Concrete Structures	Cu. Yd.	33.8
Reinforcement Bars, Epoxy Coated	Pound	3,510
Furnishing Steel Piles HP12x53	Foot	744
Driving Piles	Foot	744
Test Piles Steel HP12x53	Each	1
Bar Splicers	Each	8
Pile Shoes	Each	12

\* See Special Provisions

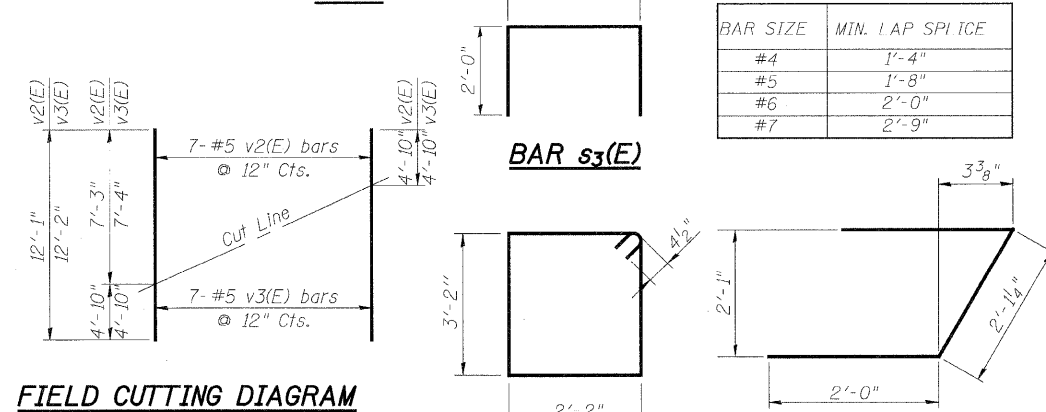
**PILE DATA**

Type: Steel HP 12x53 with Pile Shoes  
 Nominal Required Bearing: 419 kips  
 Allowable Resistance Available: 128 kips  
 Est. Length: 62 ft  
 No. Production Piles: 12  
 No. Test Piles: 1



**DETAIL A**

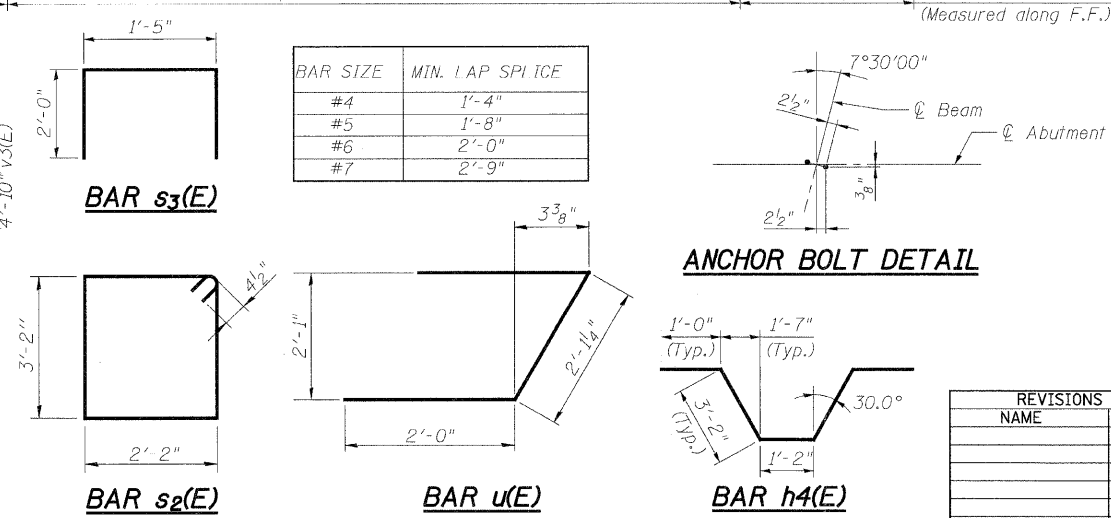
**PLAN**



**FIELD CUTTING DIAGRAM**

Order v2(E) & v3(E) full length. Cut as shown and use remainder of bars in opposite face.

BAR SIZE	MIN. LAP SPICE
#4	1'-4"
#5	1'-8"
#6	2'-0"
#7	2'-9"



**ANCHOR BOLT DETAIL**

**NOTES:**

1. Pour steps monolithically with cap.
2. For Bar Splicer Details see sheet S15.

REVISIONS	
NAME	DATE

ILLINOIS DEPARTMENT OF TRANSPORTATION  
**SOUTH ABUTMENT**  
 ILLINOIS ROUTE 53 OVER  
 SPRING BROOK CREEK  
 FAU 2578 SECTION 532B-1  
 STRUCTURE NO. 022-0189  
 DUPAGE COUNTY STATION 166+46.79  
 SCALE: NONE DRAWN BY: M.T / E.M.  
 DATE: 6/12/09 CHECKED BY: A. YARGICOGLU