

Bench Mark
Cut Square in SW corner of parapet on existing bridge over Spring Brook Creek Elev. 690.92

Existing Structure
None

STATE OF ILLINOIS
DEPARTMENT OF TRANSPORTATION

GENERAL NOTES

1. Reinforcement bars shall conform to the requirements of ASTM A 706 Gr 60. See Special Provisions.
2. All construction joints shall be bonded.
3. The Contractor is responsible for the design and performance of the untreated timber lagging using no less than 3" nominal rough-sawn thickness and timber with a minimum allowable bending stress f_b of 1000 psi.
4. Protective coat shall be applied to exposed surfaces of the front face of wall above the finished grade.
5. Reinforcement bars designated (E) shall be epoxy coated.

TOTAL BILL OF MATERIAL

ITEM	UNIT	TOTAL
Structure Excavation	Cu. Yd.	280
Concrete Structures	Cu. Yd.	114.6
Form Liner Textured Surface	Sq. Ft.	1,542
Stud Shear Connectors	Each	352
Untreated Timber Lagging	Sq. Ft.	1,857
Furnishing Soldier Piles (HP14x117)	Foot	1,011
Reinforcement Bars, Epoxy Coated	Pound	12,110
Driving Soldier Piles	Foot	1,011
Name Plates	Each	1
Geocomposite Wall Drain	Sq. Yd.	195
Pipe Underdrains for Structures, 4"	Foot	210
* Chain Link Fence, 4' Attached to Structure	Foot	210
Protective Coat	Sq.Yd.	171

* SEE THE SPECIAL PROVISIONS

STATION 168+30.00
BUILT 200_ BY
STATE OF ILLINOIS
F.A.U. RT. 2578 SEC. 532B
STR. NO. 022-W031

NAME PLATE
(See Std. 515001)

APPROVED
FOR STRUCTURAL ADEQUACY ONLY

Ralph E. Anderson (137)
ENGINEER OF BRIDGES AND STRUCTURES

HIGHWAY CLASSIFICATION

F.A.U. Route 2578 - Illinois Route 53
Functional Class: Suburban Minor Arterial
ADT: 25,800 (2000), 31,000 (2020)
Design Speed: 45 mph
Posted Speed: 45 mph

DESIGN SPECIFICATIONS

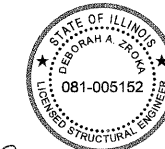
2002 AASHTO Standard
Specifications for Highway Bridges

DESIGN STRESSES

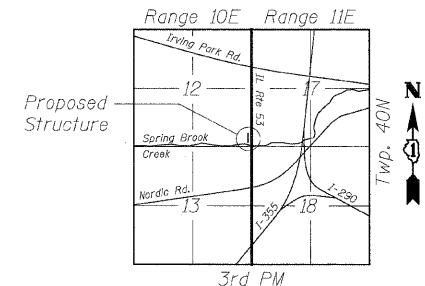
$f'_c = 3,500$ psi
 $f_y = 60,000$ psi (reinforcement)
 $f_y = 36,000$ psi (M270 Grade 36, Soldier Pile)

INDEX OF SHEETS

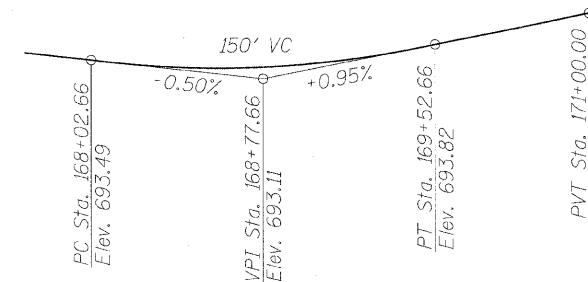
Sheet	Title
1	General Plan & Elevation
2	Soldier Pile Layout
3	Typical Sections & Details
4	Concrete Facing
5	Concrete Facing & Details
6	Rustication Details
7-10	Boring Logs



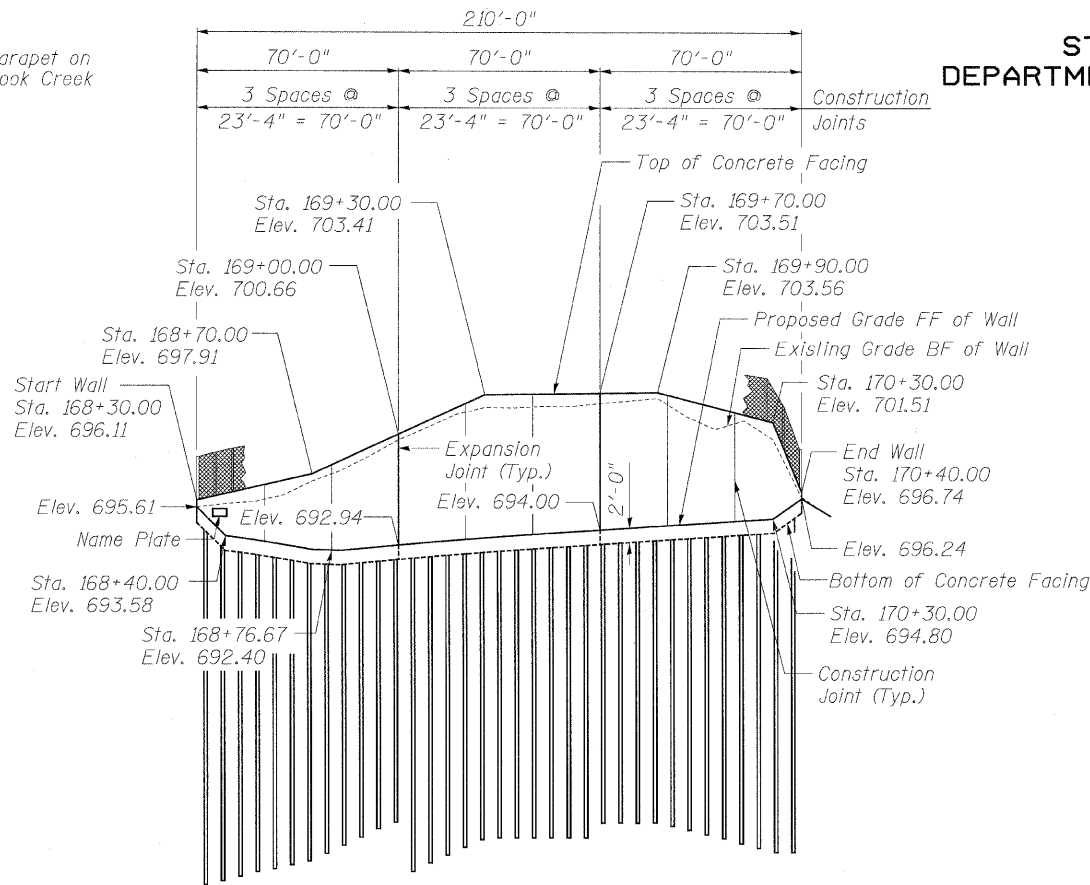
Deborah A. Zroka
DEBORAH A. ZROKA, S.E.
NO. 081-005152
EXP. DATE: 11/30/2010



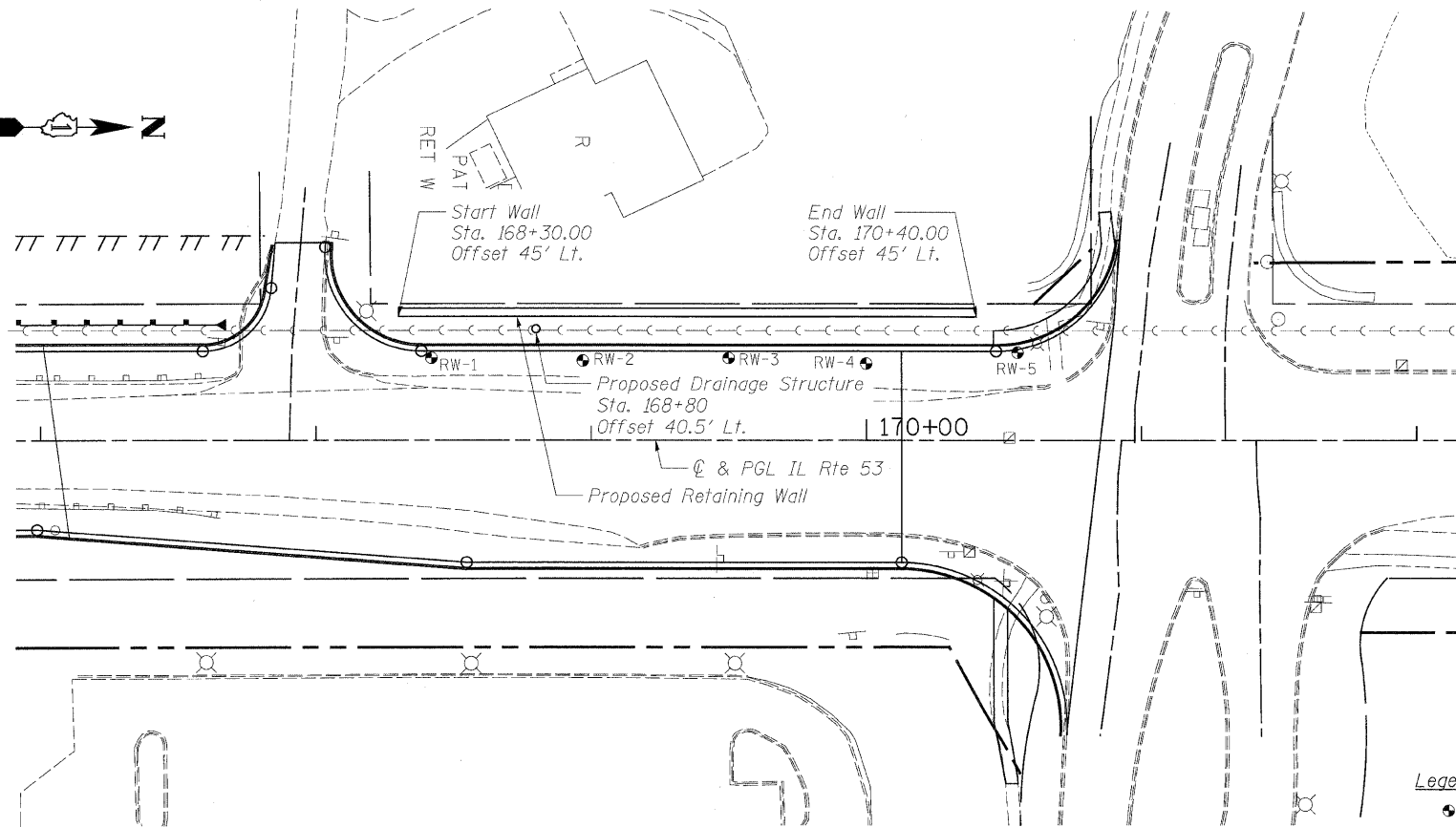
LOCATION SKETCH



PROFILE GRADE
(Along IL Rte 53)



ELEVATION



PLAN

- Legend**
- Soil Boring
 - FF Front Face
 - BF Back Face
 - <-<- 8" Sanitary Sewer

Note:
All stations and offsets are given at the front face of the concrete facing.

ZROKA engineering
Zroka Engineering, P.C.
4216 North Hermitage
Chicago, IL 60613

Date: 04-10-09 Drawn By: SW Checked By: LS

SHEET NO. 1	F.A.U. RTE. 2578	SECTION 532B	COUNTY DUPAGE	TOTAL SHEETS 117	SHEET NO. 71
OF 10 SHEETS	SN 022-W031		CONTRACT NO. 62881		
DATE: 6/12/09	FED. ROAD DIST. NO.	ILLINOIS	FED. AID PROJECT		