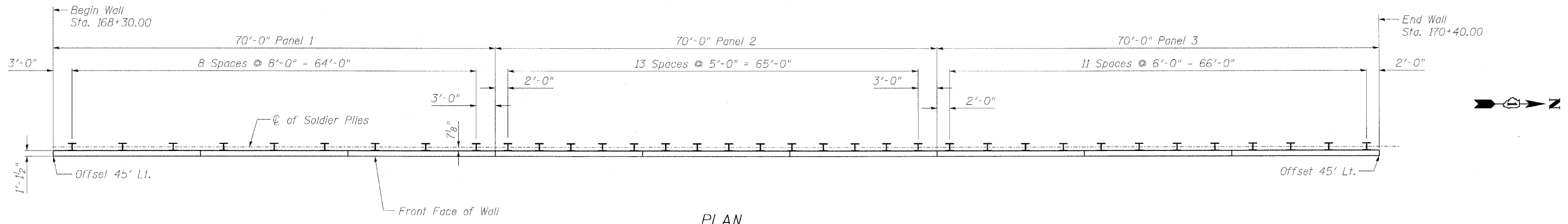
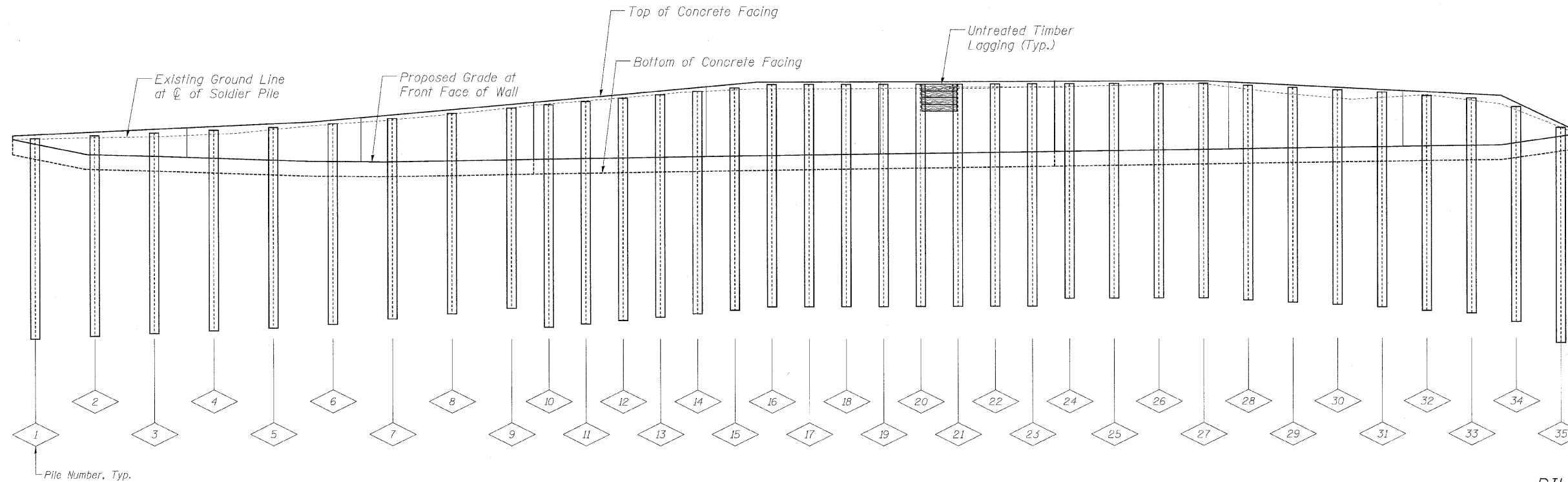


STATE OF ILLINOIS
DEPARTMENT OF TRANSPORTATION



PLAN

Note: All piles are HP14x117 with offset = 46.72' to ϕ pile
Concrete cap not shown for clarity.



ELEVATION

BILL OF MATERIAL

Item	Unit	Quantity
Furnishing Soldier Piles (HP14x117)	Foot	1,011
Driving Soldier Piles	Foot	1,011
Untreated Timber Lagging	Sq Ft	1,857
Stud Shear Connectors	Each	352

PILE SUMMARY

Pile No.	Station	Length	Bottom Elevation	Top Elevation	Pile No.	Station	Length	Bottom Elevation	Top Elevation	Pile No.	Station	Length	Bottom Elevation	Top Elevation
1	168+33.00	27'-0"	668.75	695.75	13	169+17.00	30'-0"	671.72	701.72	25	169+78.00	29'-0"	674.03	703.03
2	168+41.00	27'-0"	669.11	696.11	14	169+22.00	30'-0"	672.18	702.18	26	169+84.00	29'-0"	674.05	703.05
3	168+49.00	27'-0"	669.47	696.47	15	169+27.00	30'-0"	672.64	702.64	27	169+90.00	29'-0"	674.06	703.06
4	168+57.00	27'-0"	669.83	696.83	16	169+32.00	30'-0"	672.92	702.92	28	169+96.00	29'-0"	673.75	702.75
5	168+65.00	27'-0"	670.19	697.19	17	169+37.00	30'-0"	672.93	702.93	29	170+02.00	29'-0"	673.44	702.44
6	168+73.00	27'-0"	670.69	697.69	18	169+42.00	30'-0"	672.94	702.94	30	170+08.00	29'-0"	673.14	702.14
7	168+81.00	27'-0"	671.42	698.42	19	169+47.00	30'-0"	672.95	702.95	31	170+14.00	29'-0"	672.83	701.83
8	168+89.00	27'-0"	672.15	699.15	20	169+52.00	30'-0"	672.97	702.97	32	170+20.00	29'-0"	672.52	701.52
9	168+97.00	27'-0"	672.89	699.89	21	169+57.00	30'-0"	672.98	702.98	33	170+26.00	29'-0"	672.21	701.21
10	169+02.00	30'-0"	670.34	700.34	22	169+62.00	30'-0"	672.99	702.99	34	170+32.00	29'-0"	671.05	700.05
11	169+07.00	30'-0"	670.80	700.80	23	169+67.00	30'-0"	673.00	703.00	35	170+38.00	29'-0"	668.19	697.19
12	169+12.00	30'-0"	671.26	701.26	24	169+72.00	29'-0"	674.02	703.02					

SOLDIER PILE LAYOUT
ILLINOIS ROUTE 53 (FAU 2578)
RETAINING WALL
FAU 2578 SECTION 532B
STRUCTURE NO. 022-W031
DUPAGE COUNTY
STA. 168+30.00 TO STA. 170+40.00

SHEET NO. 2	F.A.U. RTE.	SECTION	COUNTY	TOTAL SHEETS	SHEET NO.
	2578	532B	DUPAGE	117	72
OF 10 SHEETS	SN 022-W031		CONTRACT NO. 62881		
DATE: 6/12/09	FED. ROAD DIST. NO.	ILLINOIS	FED. AID PROJECT		